



Electryfy

Residences in Hollywood

case study

The Residences of Hollywood condominium community is located along Florida's protected coastal area, where sea turtle nesting and hatchling activity takes place each year. Local municipal code requires strict compliance with turtle-friendly lighting standards to prevent artificial lighting from disorienting hatchlings navigating toward the ocean.

The property's existing pool deck and rear yard lighting did not meet turtle lighting regulations and also lacked the required minimum illumination levels for resident safety. The client contracted Electryfy to fully redesign, supply, and install a lighting system that was both code-compliant and aesthetically pleasing.



Project Scope

- Conduct complete photometric studies for safety + wildlife compliance.
- Removed existing fixtures not suitable for coastal wildlife zones.
- Install over 60 new turtle-friendly luminaires



Solution

We redesigned the exterior lighting to meet City of Hollywood engineering and wildlife standards while protecting sea turtles and ensuring safe visibility



Results

- Achieved and verified reduced glare & light pollution
- Achieved with customized optics
- Turtle lighting regulations
- Significantly enhanced nighttime atmosphere



954-626-0267



info@electryfy.com



www.electryfy.com



Electryfy

Residences in Hollywood Turtle Lighting Project

The Residences of Hollywood condominium community is located along Florida's protected coastal area, where sea turtle nesting and hatchling activity takes place each year.



Sea Turtle Protection Requirements



Florida Fish & Wildlife Conservation Commission Requirements Passed



Aesthetic improvement



Contact Us:



954-626-0267

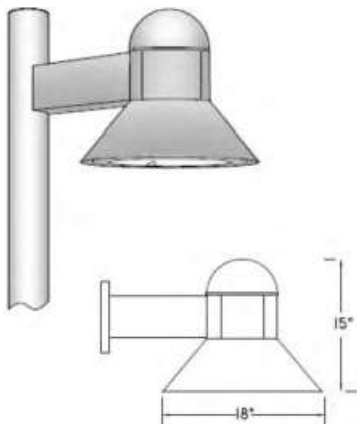
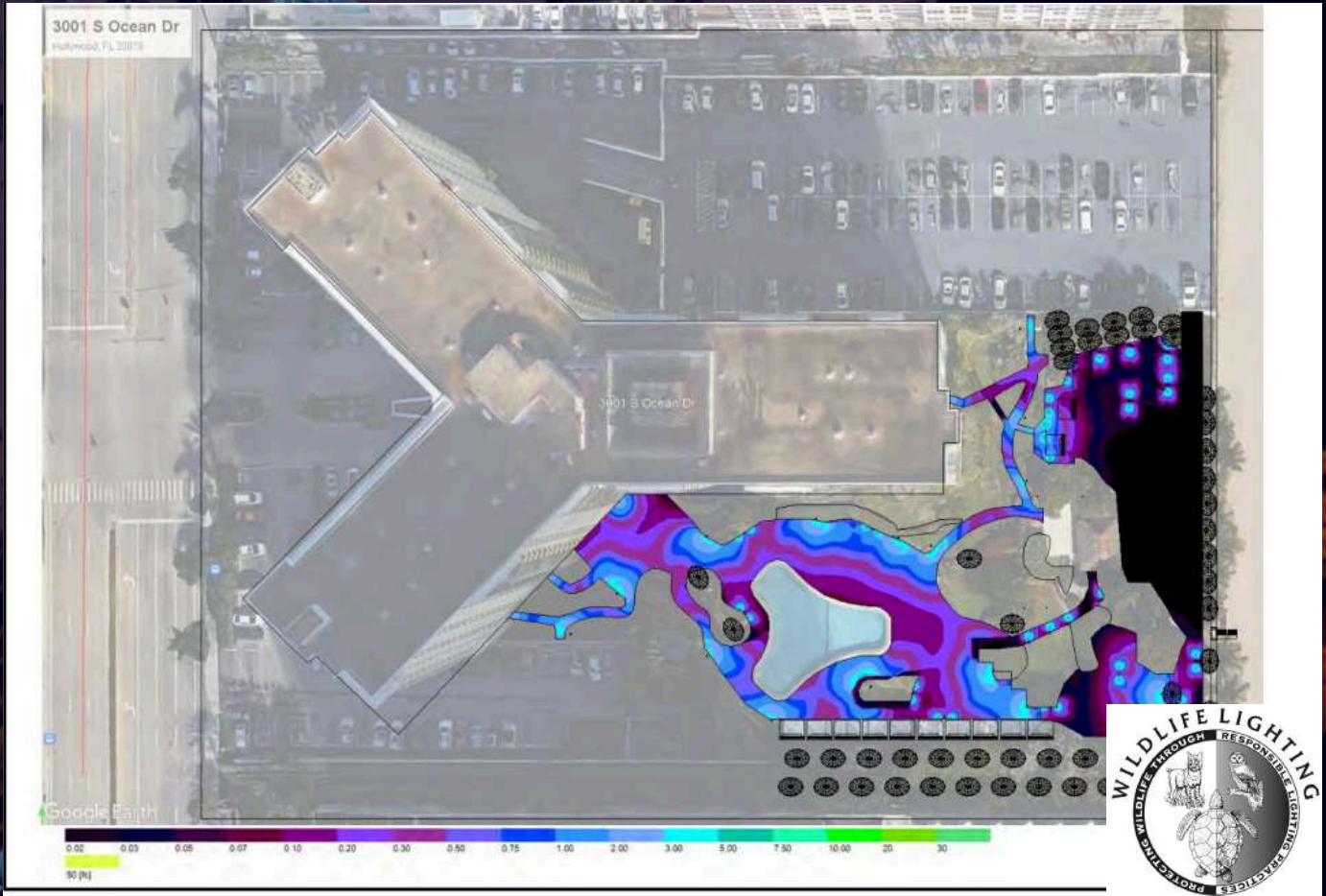


info@electryfy.com



www.electryfy.com

Product and Electrical Engineering Used at this project



Amber LED Luminaire –
Model BL01-014, Series VK-
17



Amber LED Bollard Light
– Model BL01-024