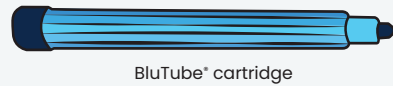


BluTube Install Guide for Standard Bottles

Read First:

Before installing your BluTube®, shock the lines. Never shock through your BluTube, use the provided dummy straw with luer lock. For resources on how to shock: proedgedental.com/shock

What's in the Box:



BluTube® cartridge



Clear luer lock



Dummy straw with luer lock



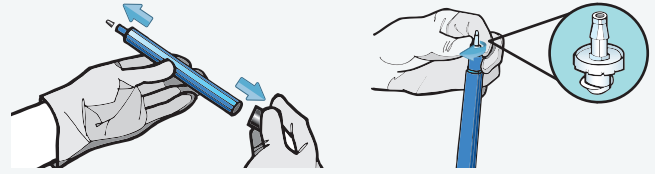
6-month indicator

What you will need:

- Pair of scissors
- Measuring tape

STEP 1

Practicing aseptic technique, remove the dark blue shipping caps from both ends of the BluTube cartridge. Attach the clear luer lock to the BluTube cartridge.

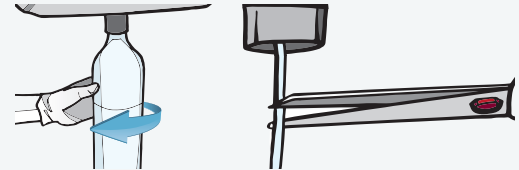


STEP 2

Remove the water bottle from the dental unit. Use the measuring tape and cut the uptake tube according to the table to the right.

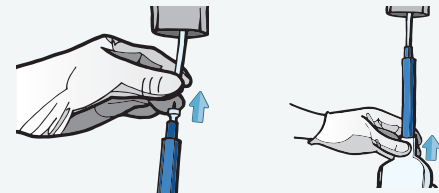
Bottle Size Uptake Tube

Bottle Size	Uptake Tube
750mL	2 1/4"
2L	7 1/4"



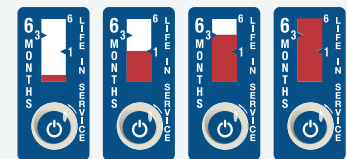
STEP 3

Connect the BluTube (with the clear luer lock attached) to the uptake tube by pressing it into the tube until it feels tight and snug. Refill the water bottle with cold tap water and reattach to the unit. Set the air pressure to 45psi. Flush cold tap water through the BluTube cartridge for 3-5 minutes. It is normal to see a slight tint in the water during initial flush.



STEP 4

Store the other BluTube cartridge in a cool, dry place until ready for use. Activate the 6-month indicator by pressing firmly on the bubble and keep in a cool, dry place. At six months, the entire bar will be filled with red, letting you know it's time to replace your BluTube cartridge.



Daily Maintenance: At the end of each working day, empty out your bottles and place the empty bottle back on the unit over the BluTube Cartridge. When you get back in the morning, wipe down the BluTube with a clean paper towel, fill the bottle with fresh water, and flush the lines for two minutes.

Note: Place the 6-month indicator on your maintenance calendar to serve as the reminder that it's time to change your BluTube. Replacement indicators can provide +/- 15% time accuracy. Use as a visual reminder, but rely on documented installation date.

BluTube Install Guide for A-dec Bottles

Read First:

Before installing your BluTube®, shock the lines. Never shock through your BluTube, use the provided dummy straw with luer lock. For resources on how to shock: proedgedental.com/shock

What's in the Box:



BluTube® cartridge



Clear luer lock



Dummy straw with luer lock



6-month indicator

What you will need:

- Pair of scissors
- Measuring tape
- 1/8" Allen wrench

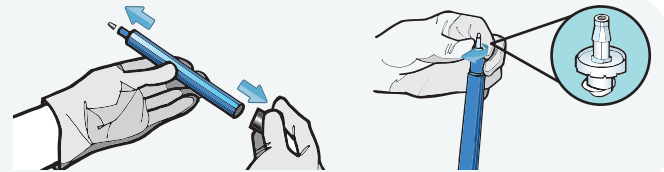
STEP 1

Using aseptic techniques, remove the A-dec bottle by pushing up and twisting to the left. Then take a 1/8" Allen wrench and remove both screws from the collar. Separate the collar and lift the uptake tube from the bottle.



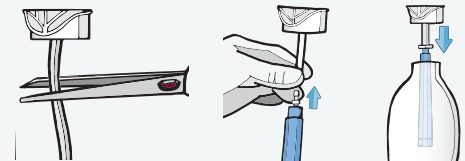
STEP 2

Take the BluTube cartridge and remove the dark blue shipping caps from both ends of the cartridge. Attach the clear luer lock to the BluTube cartridge.



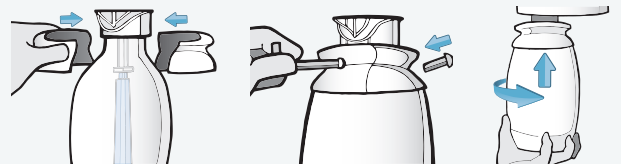
STEP 3

Cut the uptake tube to 3/4". Connect the BluTube (with the clear luer lock attached) to the uptake tube by pressing it into the tube until it feels tight and snug. Place the uptake tube assembly in the bottle.



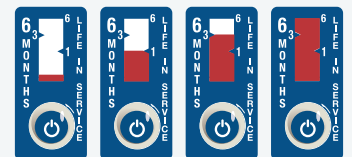
STEP 4

Reconnect the collar to the uptake tube assembly and bottle. Attach one side of the collar at a time. The collar should feel "locked in place" when installed correctly. Use the Allen wrench/screws to secure the collar back together. Ensure the collar is tight with no visible gaps. Refill the water bottle with cold tap water and reattach to the unit. Set the air pressure to 45psi.



STEP 5

Flush cold tap water through BluTube for 3-5 minutes. It is normal to see a slight tint in the water during initial flush. Store the other BluTube cartridge in a cool, dry place until ready for use. Activate the 6-month indicator by pressing firmly on the bubble and keep in a cool, dry place. At six months, the entire bar will be filled with red, letting you know it's time to replace your BluTube cartridge.



Daily Maintenance: At the end of each working day, empty out your bottles and place the empty bottle back on the unit over the BluTube Cartridge. When you get back in the morning, wipe down the BluTube with a clean paper towel, fill the bottle with fresh water, and flush the lines for two minutes.

Note: Place the 6-month indicator on your maintenance calendar to serve as the reminder that it's time to change your BluTube. Replacement indicators can provide +/- 15% time accuracy. Use as a visual reminder, but rely on documented installation date.

Not sure what to do? Let us help. 888.843.3343 | support@proedgedental.com