

Dummy Straw Instructions

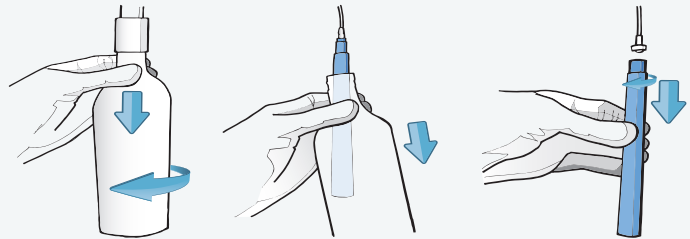


Read First:

Regularly shocking dental unit waterlines is a vital component of every effective waterline maintenance protocol. This practice is crucial in allowing low-level antimicrobial products like straws/cartridges to perform at their best. Follow these steps to effectively utilize the dummy straw provided by ProEdge Dental Compliance Labs.

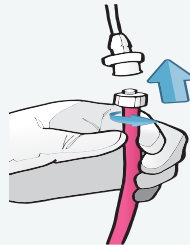
STEP 1

Remove your water bottle. Locate the quick-connect fitting, then unscrew your cartridge/straw gently. **Never shock directly through straw/cartridge, always through the dummy straw.**



STEP 2

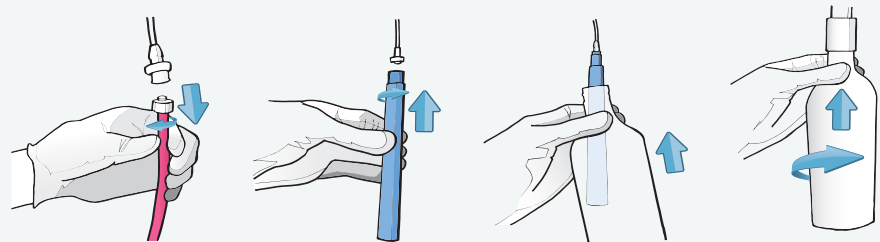
Attach dummy straw by gently twisting the quick-connect fitting into the uptake-tube attachment (approximately 1/2 turn). Trim the length with scissors if needed.



Dummy straws are reusable!
Each dummy straw should be kept and stored for your next shock.

STEP 3

After you have shocked, reattach your cartridge/straw to the unit and be sure to mark the install date if applicable.



Note: If you need another dummy straw sent to your office, please reach out to our Safe Water Team via the contact information below and we would be more than happy to get you taken care of!