

The Sonoma fire pit is handmade by Dekko in North America. Ships with your choice of NG or LP burner, one decorative aggregate option and chrome On/Off key.

Size: 72"W x 33"D x 16"H  
 CSA Approved Burner Assembly

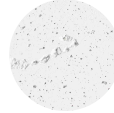


	Manual Ignition	Electronic Ignition
BTU/Hr	65,000	150,000
Weight	215 lbs	215 lbs
Fuel Options	NG/LP	NG/LP

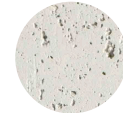
**Optional Accessories:**

- Propane Tank Cover 16"W x 16"D x 21"H
- Glass Wind Guard 55"W x 15"D x 6"H
- Vinyl Weather Cover
- Powder Coated Aluminium Table Top 72"W x 33"D

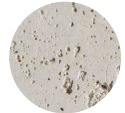
**Colour Options**



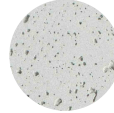
NATURAL



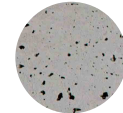
LIMESTONE



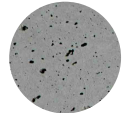
CLAY



ASH



SANDSTONE



CHARCOAL

**Decorative Aggregate Options**



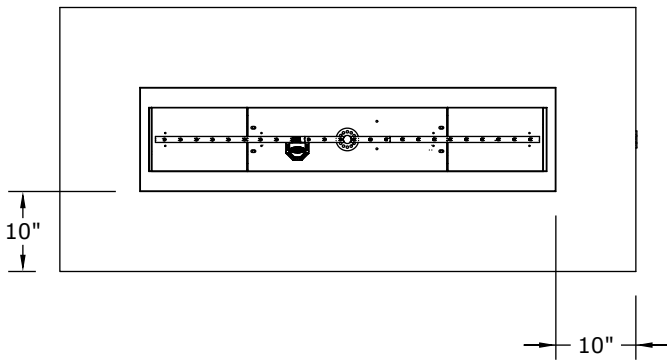
IVORY BEACH STONE



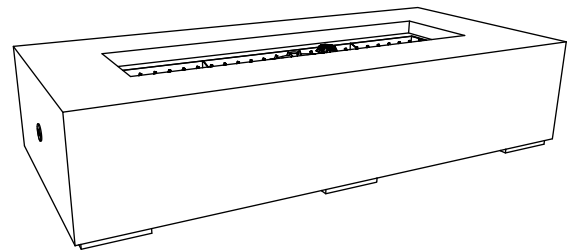
SLATE BEACH STONE



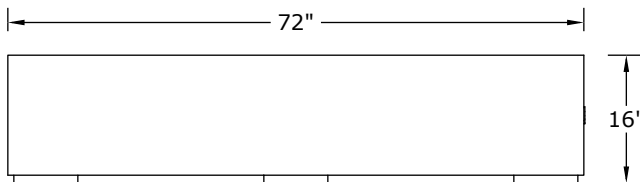
BLACK LAVA ROCK



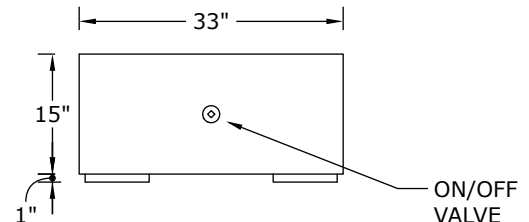
PLAN VIEW



PERSPECTIVE VIEW



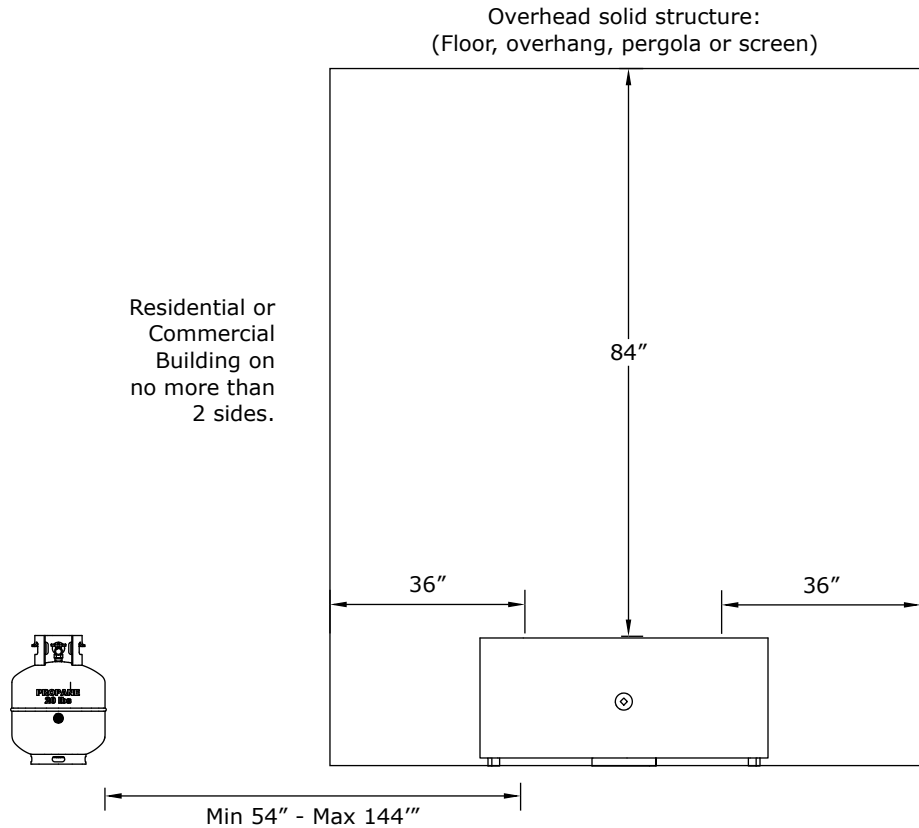
FRONT ELEVATION



SIDE ELEVATION



### Clearances

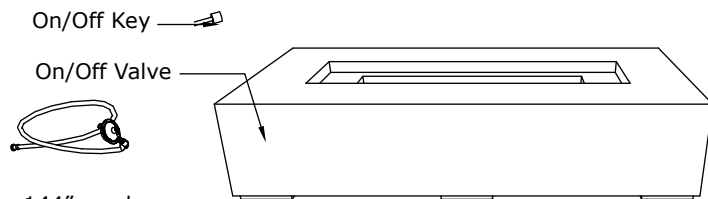
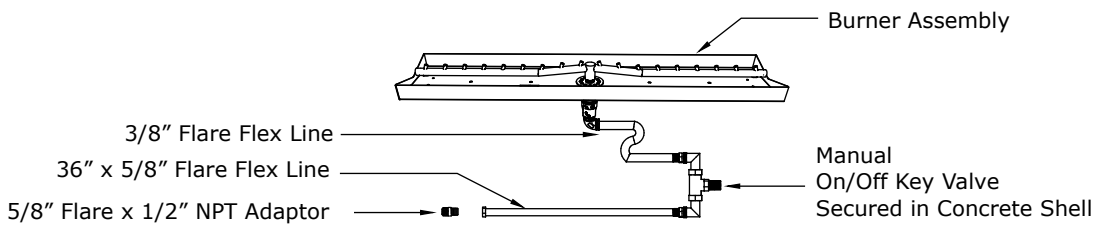


Solid structure or combustible on no more than 2 sides.  
- 12" minimum clearance for noncombustible materials.

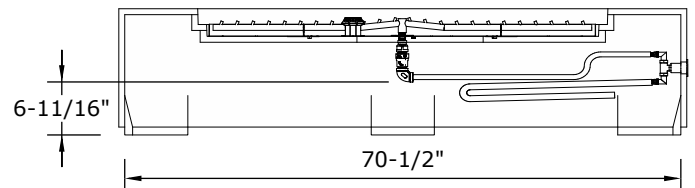
Note:  
Deck Installation - a deck insulation kit is required when installing the fire pit on a wood or composite deck. Kit includes basalt material and instructions.

### Burner Assembly

49" Match Lit Burner



3/8" x 144" gas hose assembly and regulator available separately with LP models.



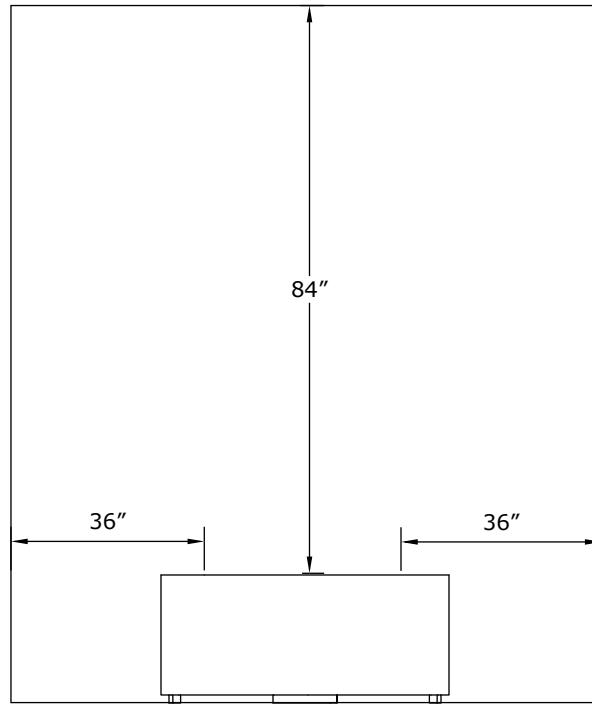
SECTION VIEW MATCH LIT



### Clearances:

Overhead solid structure:  
(Floor, overhang, pergola or screen)

Residential or  
Commercial  
Building on  
no more than  
2 sides.



Solid structure  
or combustible  
on no more than  
2 sides.  
- 12" minimum  
clearance for  
noncombustible  
materials.

**Note:**

Electronic ignition burners require  
a fixed piping gas supply. Not for  
use with portable LP tanks.

**Note:**

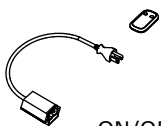
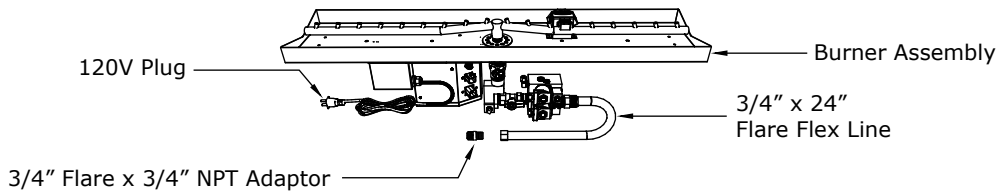
Deck Installation - if installing fire pit on  
a wood or composite deck, it is required  
to use the deck insulation kit. Kit  
includes basalt material and instructions.

### Burner Assembly

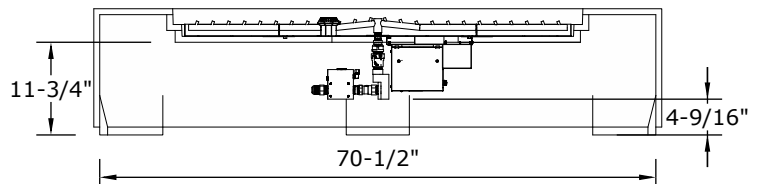
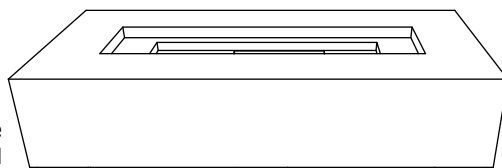
**Electrical:**

120V Outdoor receptacle required.  
Must be installed and grounded in  
accordance with local codes.

49" Electronic Ignition  
Burner



ON/OFF remote  
control included  
with Electronic  
Ignition models



SECTION VIEW ELECTRONIC IGNITION