

XRF50 PRO-DRIVE

QUICK MAINTENANCE GUIDE

Break-in

Caution

Operating the outboard motor without break-in can shorten service life.

If any abnormality is experienced during the break-in:

- Discontinue the operation immediately.
- Have Pro-Drive check the product and take proper action(s) if necessary.

1–10 min	10 min – 2 hrs.	2–3 hrs.	3–10 hrs.	After 10 hrs.
Throttle Position Idle	Less than 1/2 throttle	Less than 3/4 throttle	3/4 throttle	Full throttle available
Speed	Approx. 3000 (rpm) max	Full throttle run allowed for 1min every 10 min	Approx. 4000(rpm). Full throttle run allowed for 2 min every 10 min	

Engine Oil

Change engine oil and filter after first 20 hours use. (break-in period)
After break-in change engine oil and filter every 100 hours use.
Use only high quality 4-stroke engine oil to insure performance and prolonged engine life.

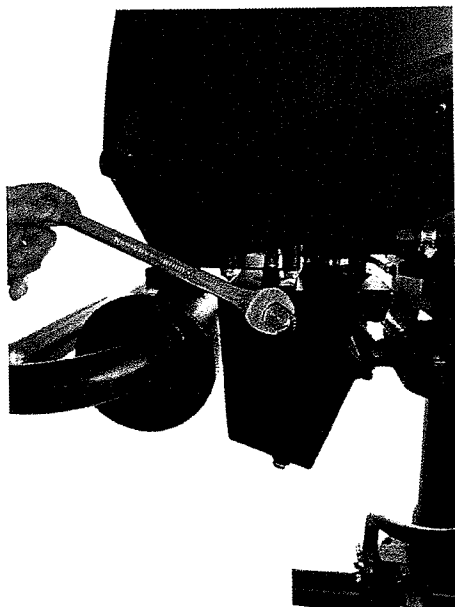
- The SAE oil viscosity **10W-40 FC-W** outboard motor engine oil is recommended. You can also use oils that carry the API rating of SH, SJ, or SL.
- Tohatsu Oil Filter 3R0076150M

Check oil when engine is cool.

To check engine oil, trim motor so top of oil tank is level.



Remove oil tank filler plug.



The top oil level should be in the upper area of the filler tube, close to the top. Add oil 15W-40 if needed.



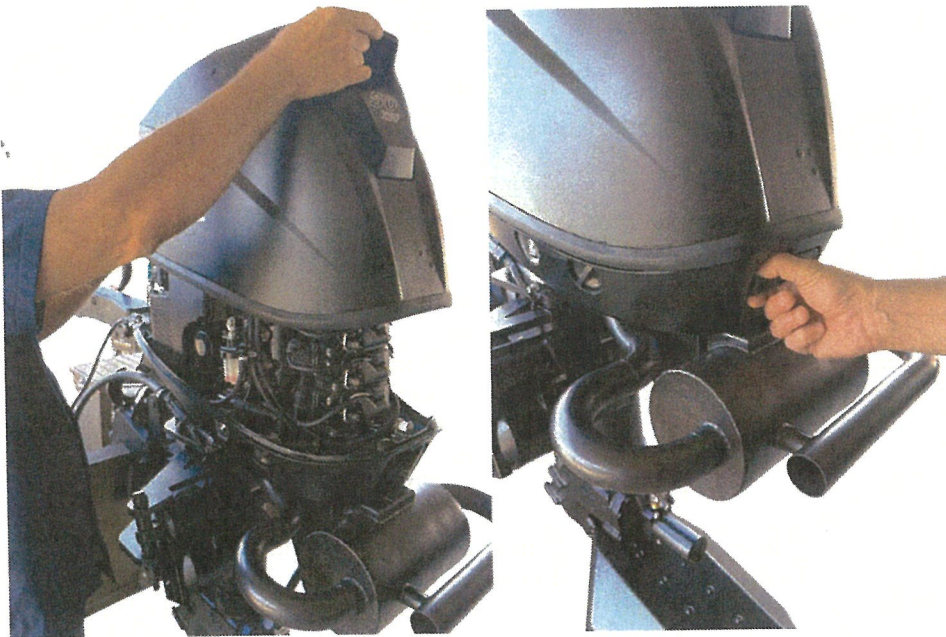
Engine oil 15W-40.



Engine Coolant

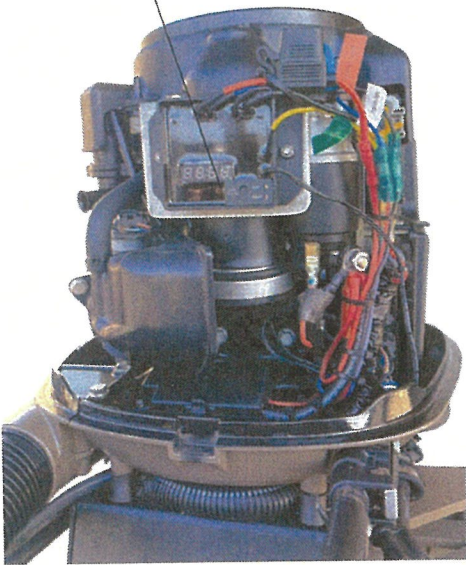
To check coolant level (when the engine is cool), remove engine cover.

CAUTION!! BE SURE THAT THE ENGINE AND MUFFLER HAVE COMPLETELY COOLED. DO NOT TOUCH A HOT MUFFLER!!

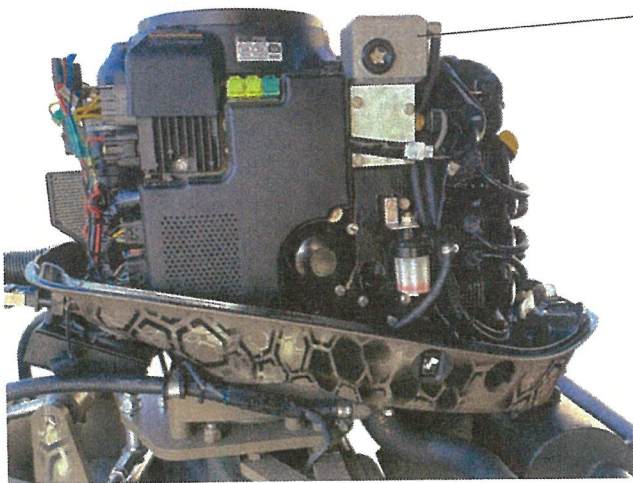


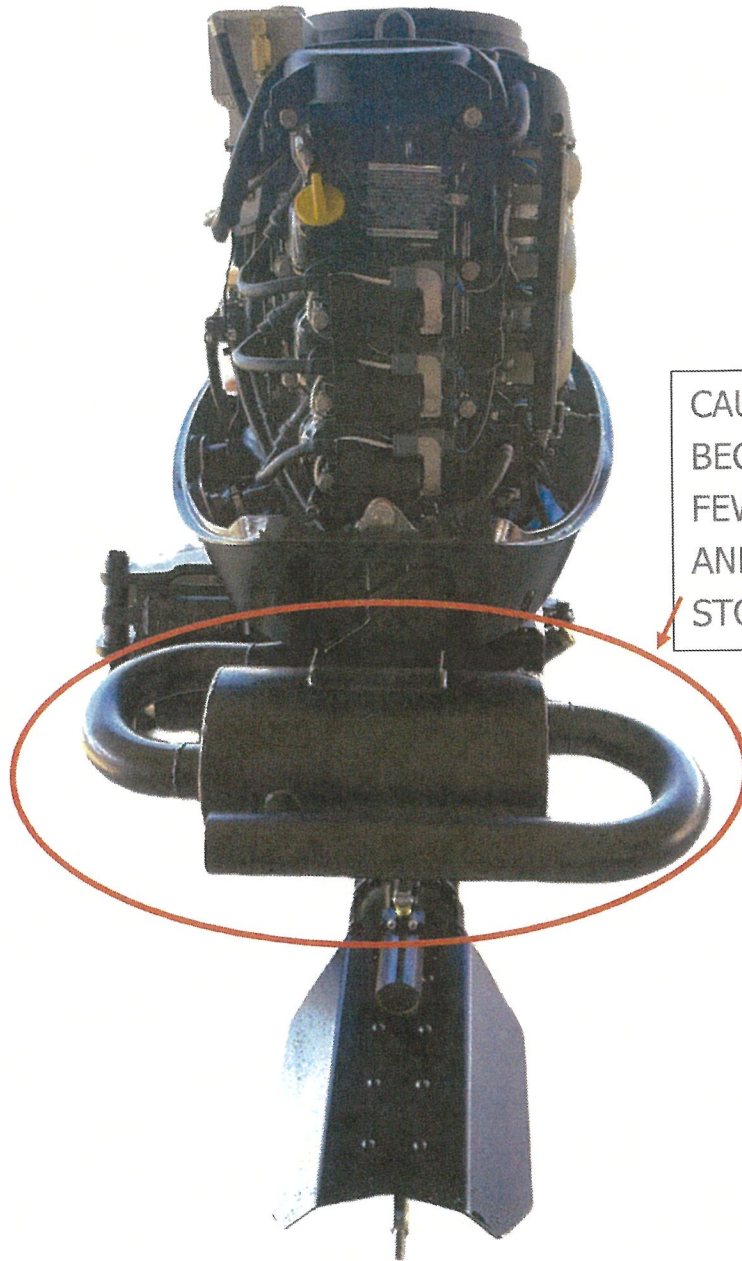
Locate the Coolant Pump Controller (in front of the engine) and the Coolant Header Tank. (on top of the engine)

Coolant Pump Controller



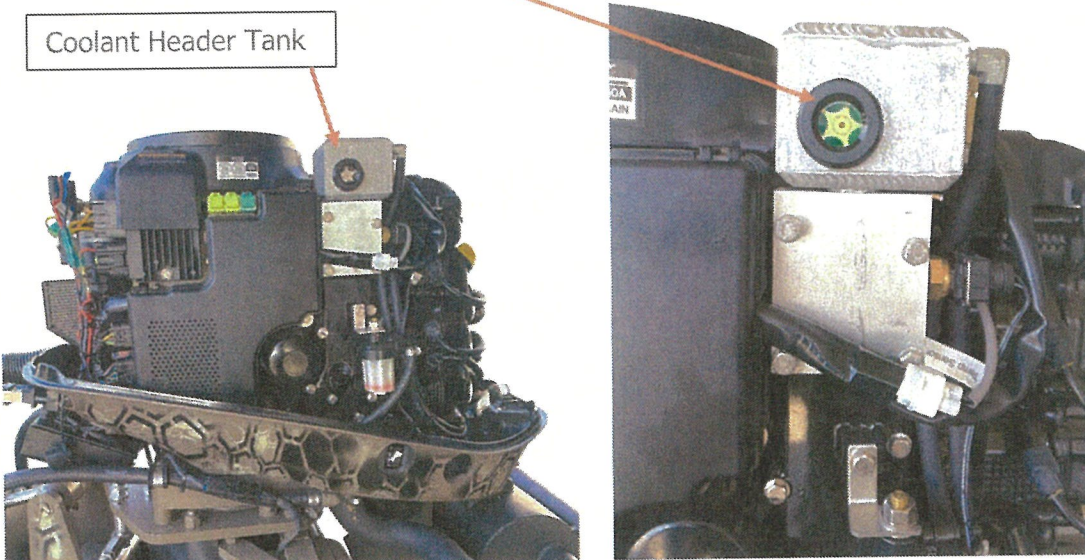
Coolant Header Tank



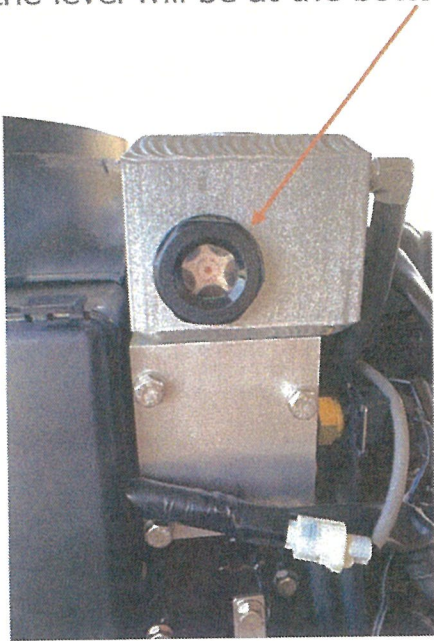


CAUTION!! MUFFLER
BECOMES HOT AFTER A
FEW SECONDS RUNNING
AND REMAINS HOT AFTER
STOPPING.

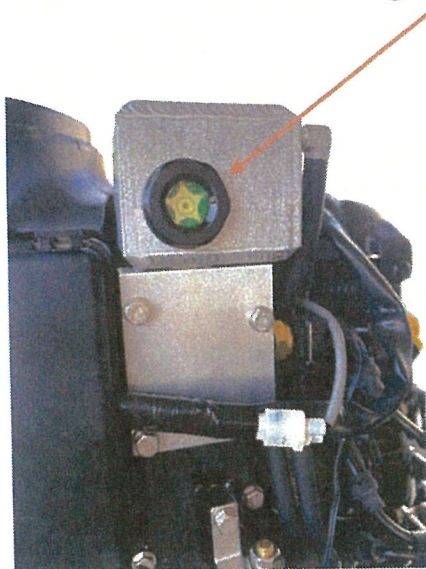
Locate the sight glass on the side of the header tank.



Observe the coolant level in the sight glass. When the engine is cool the level will be at the bottom of the sight glass.



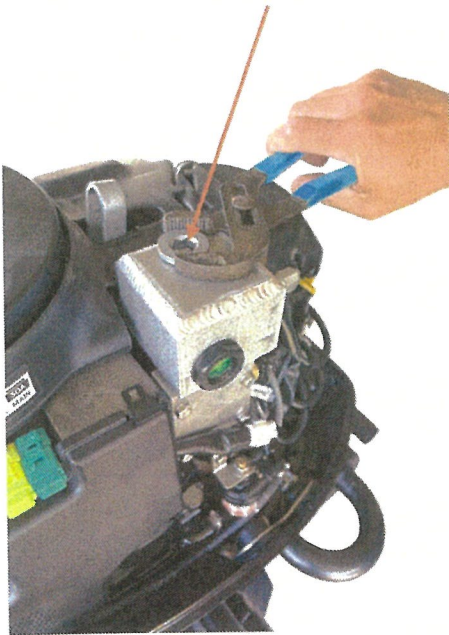
If no coolant is seen, start engine and run at idle until the coolant pump controller temperature reads 160 degrees.
(This will take 5 to 15 minutes)
The level will rise in the glass.



If the coolant level is still not visible in the sight glass, add coolant.

ADDING COOLANT

Remove the coolant header tank cap.



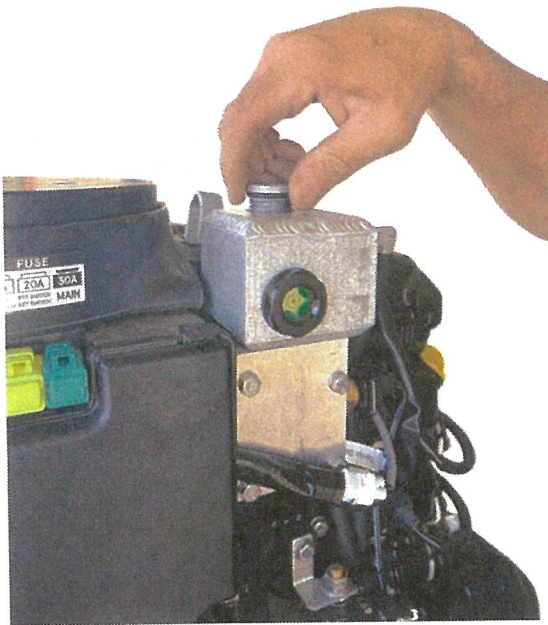
Using 50/50 Anti-Freeze coolant and a small cup, pour in coolant until the sight glass is filled.



- After pouring coolant, turn the key switch to the "on" position. (Do not start)
- Allow the coolant pump to run a startup cycle. (*This start up cycle happens when the key switch is first turned on and takes approximately 20 seconds. You will hear the coolant pump run at various speeds and then stop.*)
- Turn the key switch back to the "off" position.
- Check the coolant level again. If it has dropped, add coolant and repeat the coolant pump start up cycle.

Note: Repeating the coolant pump start up cycle up to 5 times will assure to remove any trapped air in the coolant system.

After filling the header tank, install the header tank cap.



Note: After adding coolant, when the engine first warms up the coolant will expand in the header tank. Any excess coolant will be released by the relief valve and drip out of the relief tube and onto the muffler. After the engine reaches max operating temperature the drip will stop.

