

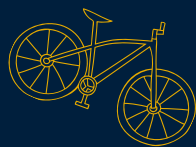
AUG 6 - AUG 9, 2026

# The lil' drifty



important information  
for adventurers

# Packing List



## Gear:

- > Two panniers is standard and should be sufficient.
- > Bring a slingshot and a pair of fresh underwear, just in case.
- > Plan for two nights camping: 1 night on land and 1 night on a sandbar. I'd recommend a tent since that's the most versatile but hammocks are doable if you want to pack light.
- > Bring all of your own biking safety gear: helmet, gloves, etc
- > The kayak/canoe rental comes with life vests, paddles, etc.
- > Note: you'll feel like you're 'out there' while on the river but you should have cell reception for the entire stretch that we're on for Lil' Drifty.
- > On land you'll have access to bathrooms wherever you go. When you're on the river, the only option is to dig a hole and poop in it so I'd recommend bring a cat trowel.
- > Bring a spare tube for your bike tire along with anything you'd need for bike maintenance. We'll have a mobile bike shop at the kickoff but once you leave the start line everything is on you; Drifty style.

## For Meals:

**Thursday night (kickoff camp) we'll have food and drinks together, included in your registration & Friday Morning we will have coffee, donuts, fruit, etc. before the start and Sunday afternoon we'll have food and drinks together, included in your registration. In between is up to you!**



- > There are ample grocery stores and restaurants along the biking route (no matter which way you go!) so I don't think you need to bring a ton of food to start. Many people will stop at the grocery store in Sauk City on Friday before getting on the canoes. This is a good spot to stock up on Water, drinks, food, etc.
- > At the transition to canoes we'll have some fire wood you can take with you so you can have a camp fire.

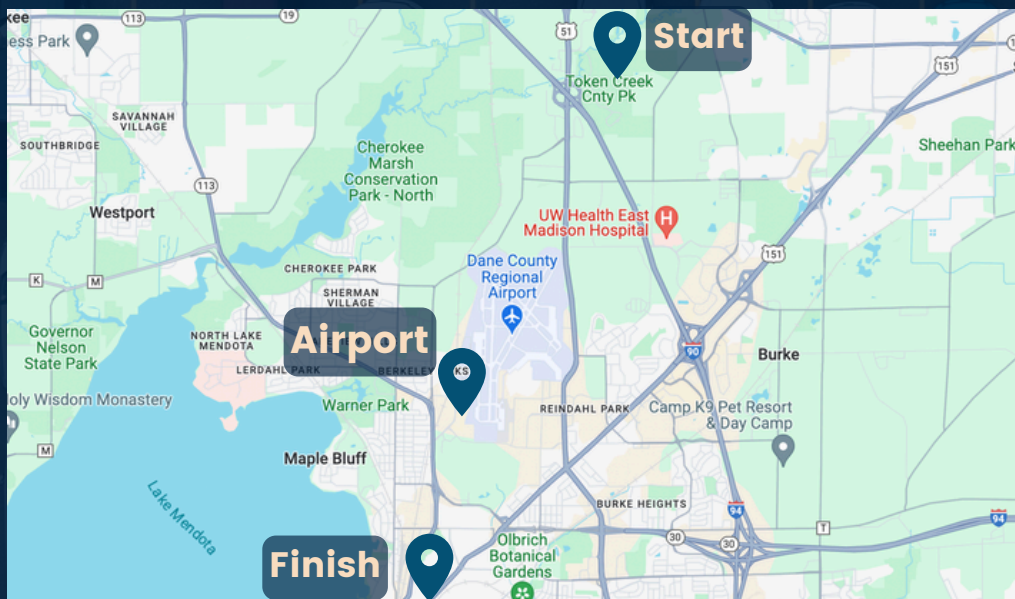


# Packing Ideas



# Parking and such

- Our best advice is to not bring a car with you. The best car is no car.
  - Ideally get yourself dropped off at the kickoff camp and have someone meet you at Drifty Fest. We'll even toss them a free beer.
- Otherwise, there is paid, secure parking at the Dane County airport
  - Covered ramp = \$10/day
  - Surface lot = \$8/day
  - Economy lot = \$6/dayPro tip: The finish line is only 4 miles from the airport.
- Lastly, we have rented the Group Camp through the weekend so if you'd like to keep your vehicle there, it is an option.



# Pro Tips

- Wave at everybody (It's a Wisconsin thing)
- Avoid Highway 18.
- Spotted Cow - If you haven't done it, do it.
- Tie your canoe to something.
- It's an adventure, get drifty with it.

Straight lines  
make the  
Lost Gods sad



# A Few Rules

- No camping on the shoreline, unless in a campground. (Islands and sandbars are okay!)
- No Glass containers.
- No Fireworks.
- Fun. Have it.



## River Notes

People have died on the Wisconsin River

Most deaths involve (a) alcohol and (b) people not wearing life vests.

Sand Bars 101

- The downstream end is known to give way.
- Don't dive off them.
- Check how stable they are

They can shift over night as water levels change.

Lastly, Keep 'er straight when you under the bridges.

This is a self supported adventure.  
Once you leave the start line, you are on your own. Obey the law. Be lost. Make the most of it. Stay safe. Be nice to people.

## In Case of Emergency: Call 911

Once everyone in the group is safe, call in to Lost HQ to report the incident at 786-567-8426 (786-LOST-I-AM).

# WAYWARD

Share your story on iOS & Android.

You can share your route with a simple url (no login required for your fans)

## Participants (That's you)

1. Check your email for a unique invite link before the event
2. Download for "Wayward app"
3. Set location to "Always On"
4. Join the trip and

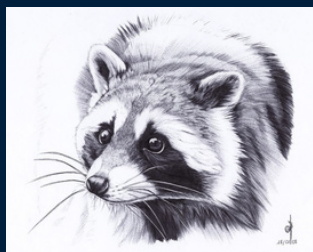


UNSCIENTIFIC AND NONEXHAUSTIVE INDEX OF

# Fauna of Wisconsin

## Raccoon

furri bandit



[ sneaky, thieving, nocturnal ]

## Robin

rufus avis acapella



[ friendliest sound to wake up to ]

## Dairy Cow

bovini de leche



[ mother of cheese ]

## Squirrel

ent rodent



[ nimble critter, won't kill you ]

## Badger

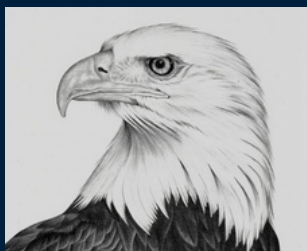
bucky



[ docile, fierce when cornered ]

## Bald Eagle

flightus americana



[ pescatarian, majestic ]

## Mosquito

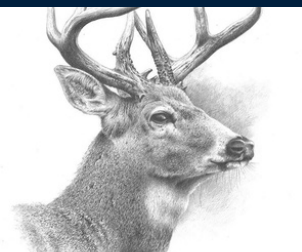
villani tiny



[ spawn of Devil, threat = 1000 ]

## Whitetail Deer

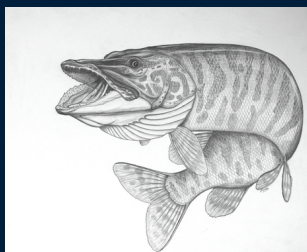
bambi



[ brown coat, won't kill you ]

## Muskellunge

maashkinoozhe



[ big, freshwater predator ]

UNSCIENTIFIC AND NONEXHAUSTIVE INDEX OF

# Flora of Wisconsin

## Milkweed

leche plantae



[ maybe toxic to humans ]

## Sugar Maple

sweetus ent



[ mother of maple syrup ]

## Red Clover

wonder plant



[ flowers are sweet and edible ]

## Cranberry

bog berri



[ sweet, sour, bitter, mmmm ]

## Poison Ivy

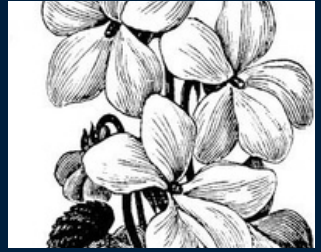
irritus leafus



[ itchy, stupid, won't kill you ]

## Wood Violet

perennial pürpura



[ blue / purple flowers, edible ]

## White Oak

shaggy ents



[ home to many a fort ]

## Birch Tree

albino ent



[ hardwood, many uses ]

## Stiff Goldenrod

monarch nectar



[ tolerant, goes well with asters ]

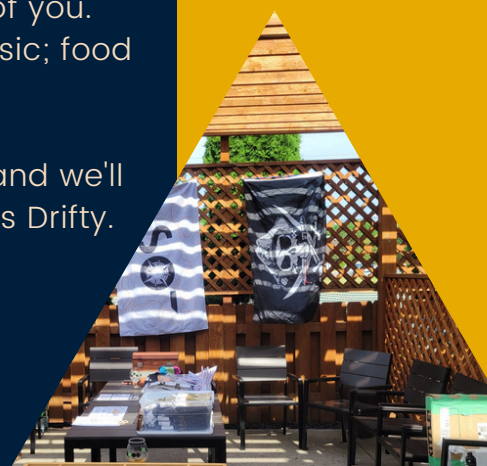
# Bring your friendz to Drifty Fest



What is Drifty Fest? It's the finish line party at the end of the Drifty. Working Draft Beer Co, a food truck, live music and adventure tales. It's free to attend and the Lost overlords are covering the beer and the music.

Invite your friends so they can tell you how proud and jealous they are of you. We'll give them free beer and music; food is available to purchase.

What to expect: Awards, stories, and we'll announce the dates for next years Drifty.



Sun Aug 9th  
12 - 4pm

