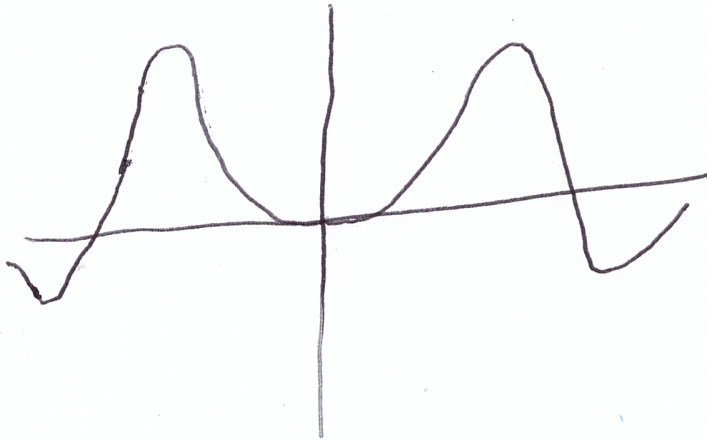


Even Functions

$$f(-x) = f(x) \quad \begin{array}{l} x^n \text{ (n even)} \\ \cos \omega x \end{array}$$

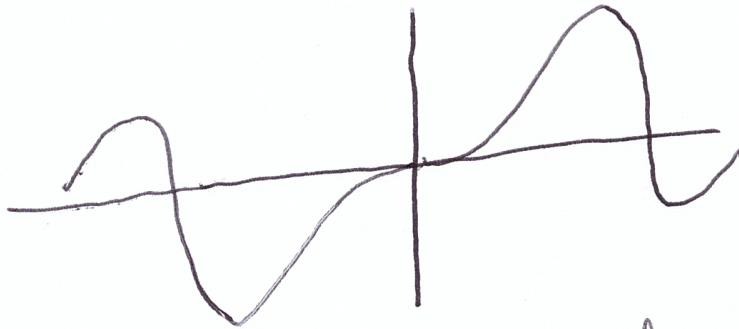


y-axis symmetry

$$\int_{-L}^L f(x) dx = 2 \int_0^L f(x) dx$$

Odd Functions

$$f(-x) = -f(x) \quad \begin{array}{l} x^n \text{ (n odd)} \\ \sin \omega x \end{array}$$



origin symmetry

$$\int_{-L}^L f(x) dx = 0$$

even • even } even
odd • odd }

even • odd - odd