



Water Quality Programs

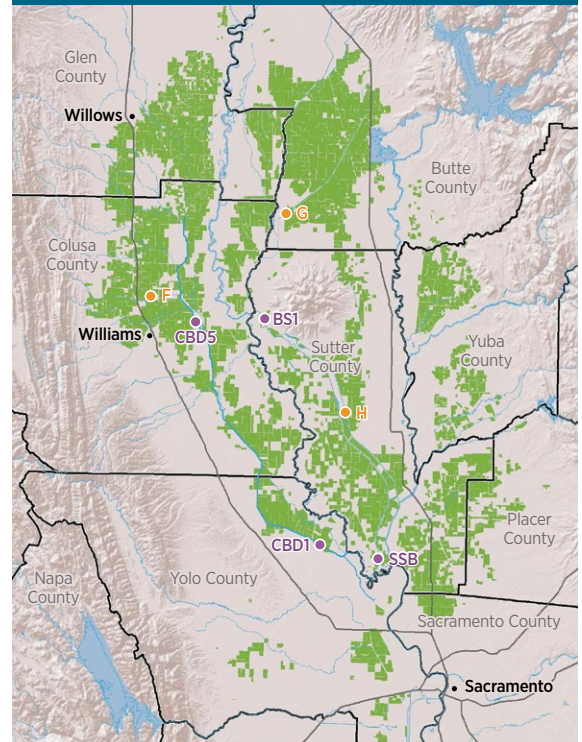
What are the Grower requirements under the Irrigated Lands Regulatory Program (ILRP) Waste Discharge Requirements (WDR)?

WDR Definition: Grower(s) is defined to mean a producer of rice as defined in California Food and Agriculture Code, section 71032, or a landowner that leases, rents, or otherwise owns land that is used by a producer of rice located within the Sacramento Valley, which includes the counties of Sacramento, Sutter, Yuba, Butte, Glenn, Colusa, Yolo, Placer, and Tehama.

Requirements*

- Maintain a copy of the Order at the farm headquarters, be familiar with content of Order, and comply with Order**
 - ▶ The Order is available from the CRC upon request
- Prepare, submit and implement a Farm Evaluation and Nitrogen Management Plan**
 - ▶ The CRC collects the plans from Growers and reports a summary to the Water Board on a 5-year cycle
- Participate in CRC outreach activities at least annually**
 - ▶ The CRC reports attendance summary (numbers only) of outreach events to the Water Board
- Comply with Salt and Nitrate Program**
 - ▶ The CRC participates in CV-SALTS
- Comply with the Monitoring and Reporting Program (MRP)**
 - ▶ The CRC submits MRP documents on behalf of Growers
- Submit all required documents to Water Board (including nitrate results for drinking water wells on rice parcels)**
 - ▶ The CRC has templates and information to aid Growers in reporting drinking water wells on rice parcel results to the Water Board
- Implement Water Quality Management practices to minimize waste discharge offsite in surface water, minimize percolation of waste to groundwater, and protect wellheads from surface water intrusion**
 - ▶ Grower led requirement
- Understand the Water Board may conduct inspections of farming operation**
 - ▶ By consent of the Grower or with a duly issued warrant

Surface Water Sampling Sites and 2023 Rice Lands Permit Areas



Monitoring Sites

● Primary Site ● Secondary Site ■ Rice Land 2023 Permit Area

Sources: Basemap (Copyright: (C) 2014 ESRI); Ricelands (Cal Ag Permit, 2022; DPR, 2022); County (Cal Fire 2007); Hydrology (NHD Accessed Jan 2016).

*This list is a summary of requirements and is not comprehensive

