

F-0-S1

Stan / Apartment

Zgrada / Building: F
Sprat / Floor: Prizemlje / Ground floor
Broj soba / Rooms: 3

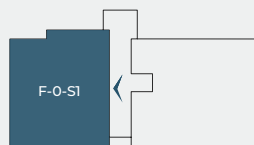
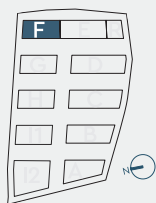
1	Ulaz / Entrance	8.97 m ²
2	Degažman / Antechamber	5.32 m ²
3	Kupatilo / Bathroom	4.41 m ²
4	Toalet / Toilet	1.89 m ²
5	Kuhinja / Kitchen	7.74 m ²
6	Trpezarija / Dining room	10.75 m ²
7	Dnevna soba / Living room	29.85 m ²
8	Spavaća soba / Bedroom	15.04 m ²
9	Kupatilo / Bathroom	6.04 m ²
10	Spavaća soba / Bedroom	9.68 m ²
11	Spavaća soba / Bedroom	11.69 m ²

Površina stana / Apartment area 111.38 m²

Lokacija / Location

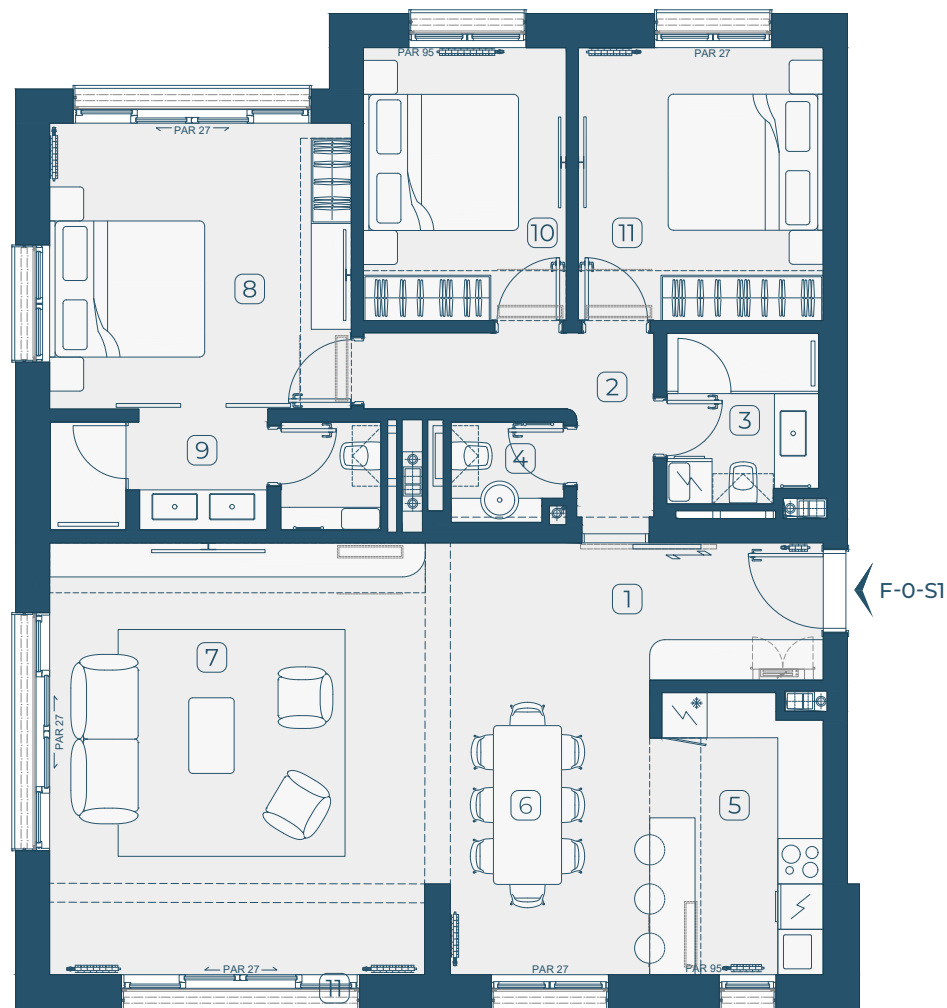
U KOMPLEKSU / IN COMPLEX

U ZGRADI / IN BUILDING



Ovaj plan je zamišljen kao orijentacioni prikaz organizacije i veličine stana. Konačne dimenzije i detalji biće potvrđeni direktno sa agentom prodaje.

This floor plan is intended as a conceptual guide to the apartment's layout and approximate size. Final dimensions and details will be confirmed directly with the sales agent.



0 1 2 5



+381 62 25 63 57

sales@serbiaprimesiteone.com

kingsfountain.com

