

KINGS FOUNTAIN DEDINJE

E-0-S2

Stan / Apartment

Zgrada / Building: E
Sprat / Floor: Prizemlje / Ground floor
Broj soba / Rooms: 1

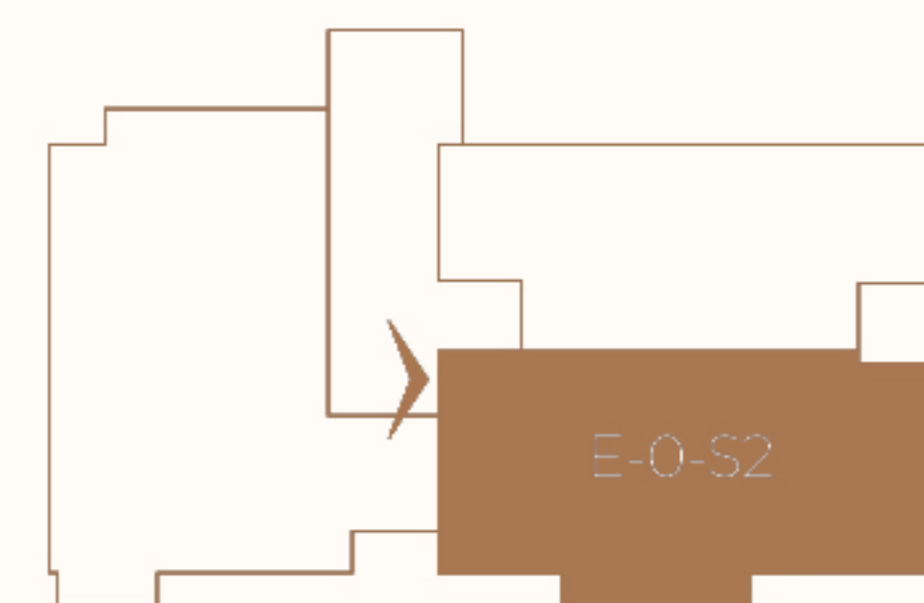
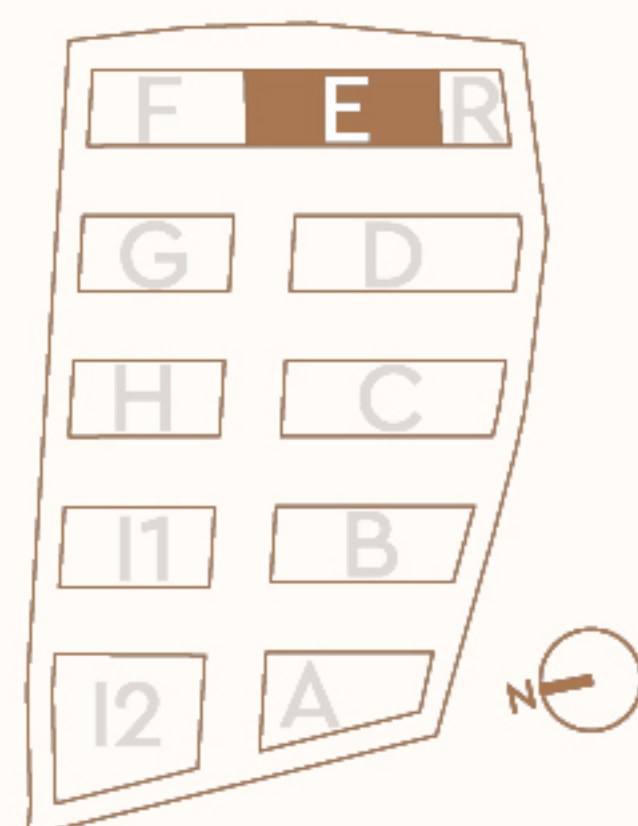
1	Ulaz / Entrance	2.74 m ²
2	Toalet / Toilet	2.21 m ²
3	Kuhinja / Kitchen	5.43 m ²
4	Dnevna soba i trpezarija / Living & Dining	30.87 m ²
5	Degažman / Antechamber	3.27 m ²
6	Spavaća soba / Bedroom	16.58 m ²
7	Kupatilo / Bathroom	4.41 m ²

	Zatvoreni prostor / Indoor area	65.42 m ²
8	Terasa / Terrace	9.10 m ²
	Otvoreni prostor / Outdoor area	9.10 m ²
	Površina stana / Apartment area	74.52 m ²

Lokacija / Location

U KOMPLEKSU / IN COMPLEX

U ZGRADI / IN BUILDING



Ovaj plan je zamišljen kao orijentacioni prikaz organizacije i veličine stana. Konačne dimenzije i detalji biće potvrđeni direktno sa agentom prodaje.

This floor plan is intended as a conceptual guide to the apartment's layout and approximate size. Final dimensions and details will be confirmed directly with the sales agent.

