

# KINGS FOUNTAIN DEDINJE

## E-2-S7

Stan / Apartment

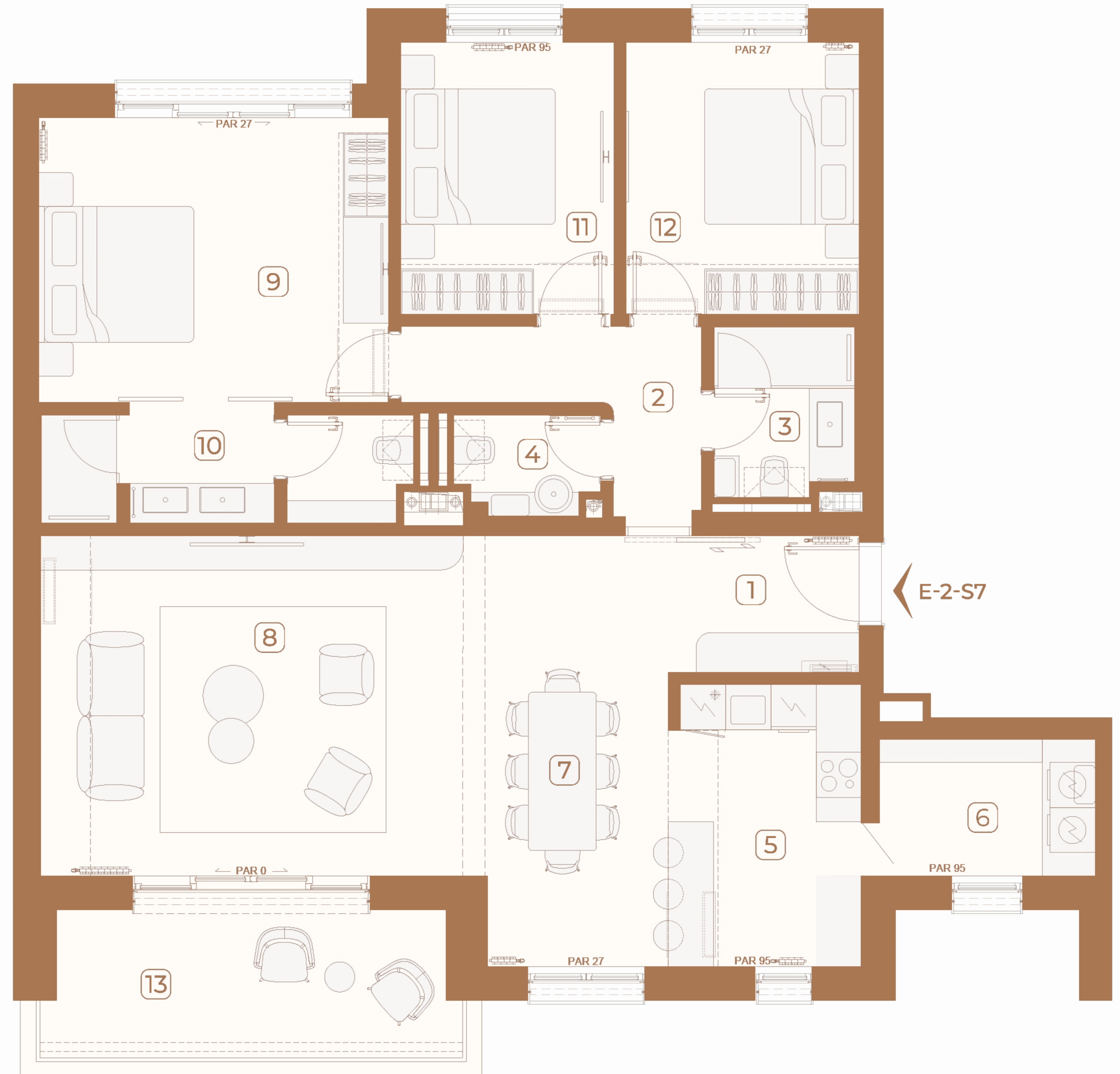
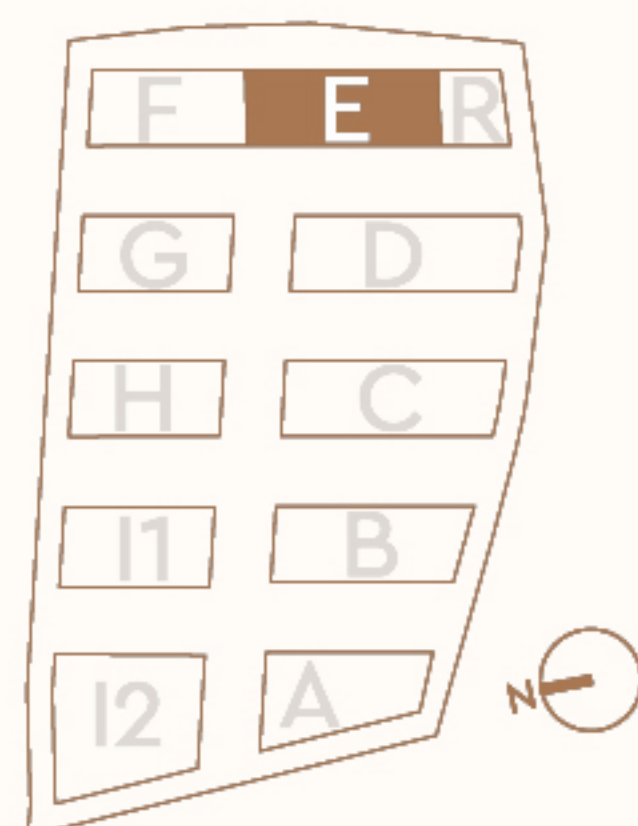
Zgrada / Building: E  
Sprat / Floor: II  
Broj soba / Rooms: 3

1	Ulaz / Entrance	7.69 m <sup>2</sup>
2	Degažman / Antechamber	5.70 m <sup>2</sup>
3	Kupatilo / Bathroom	4.07 m <sup>2</sup>
4	Toalet / Toilet	2.40 m <sup>2</sup>
5	Kuhinja / Kitchen	9.43 m <sup>2</sup>
6	Vešernica i ostava / Laundry & Storage	5.14 m <sup>2</sup>
7	Trpezarija / Dining room	10.61 m <sup>2</sup>
8	Dnevna soba / Living room	26.72 m <sup>2</sup>
9	Spavaća soba / Bedroom	17.44 m <sup>2</sup>
10	Kupatilo / Bathroom	6.73 m <sup>2</sup>
11	Spavaća soba / Bedroom	10.21 m <sup>2</sup>
12	Spavaća soba / Bedroom	11.15 m <sup>2</sup>
Zatvoreni prostor / Indoor area		112.87 m <sup>2</sup>
13	Terasa / Terrace	10.53 m <sup>2</sup>
Otvoreni prostor / Outdoor area		10.53 m <sup>2</sup>
Površina stana / Apartment area		123.40 m <sup>2</sup>

## Lokacija / Location

U KOMPLEKSU / IN COMPLEX

U ZGRADI / IN BUILDING



Ovaj plan je zamišljen kao orijentacioni prikaz organizacije i veličine stana. Konačne dimenzije i detalji biće potvrđeni direktno sa agentom prodaje.

This floor plan is intended as a conceptual guide to the apartment's layout and approximate size. Final dimensions and details will be confirmed directly with the sales agent.