

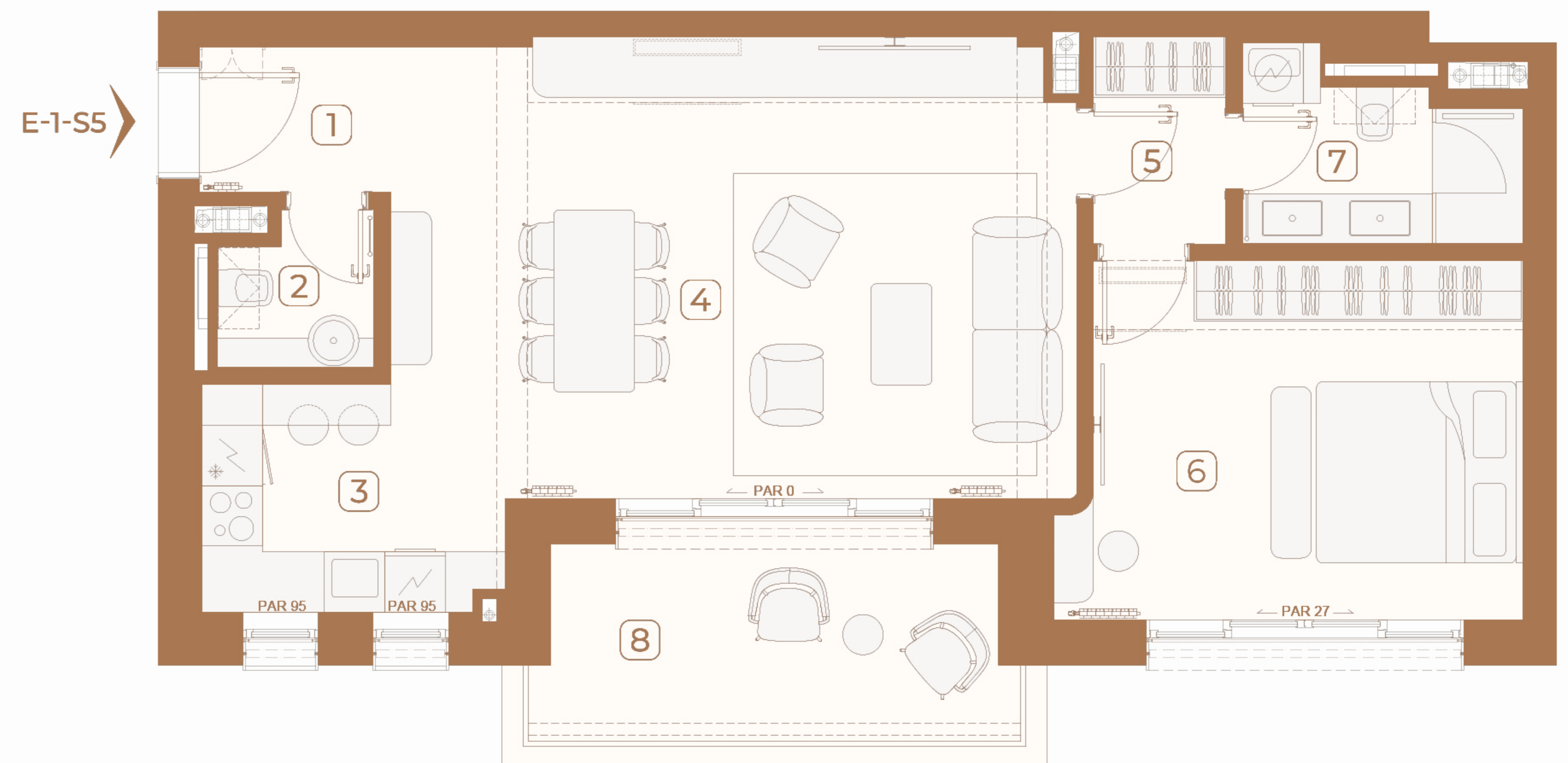
KINGS FOUNTAIN DEDINJE

E-1-S5

Stan / Apartment

Zgrada / Building: E
Sprat / Floor: 1
Broj soba / Rooms: 1

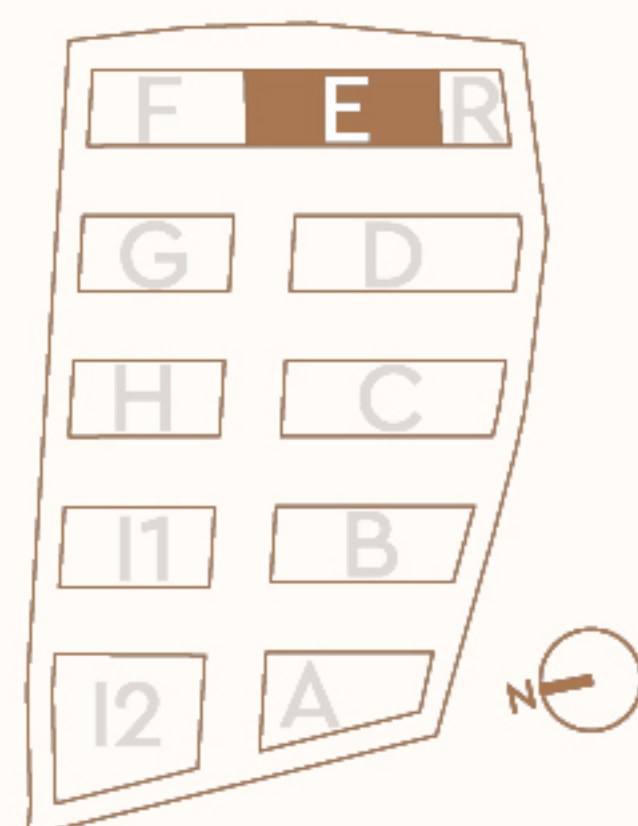
| | | |
|---------------------------------|--------------------------------------------|----------------------|
| 1 | Ulaz / Entrance | 2.74 m ² |
| 2 | Toalet / Toilet | 2.21 m ² |
| 3 | Kuhinja / Kitchen | 5.60 m ² |
| 4 | Dnevna soba i trpezarija / Living & Dining | 30.85 m ² |
| 5 | Degažman / Antechamber | 3.27 m ² |
| 6 | Spavaća soba / Bedroom | 16.69 m ² |
| 7 | Kupatilo / Bathroom | 4.41 m ² |
| Zatvoreni prostor / Indoor area | | 65.77 m ² |
| 8 | Terasa / Terrace | 9.10 m ² |
| Otvoreni prostor / Outdoor area | | 9.10 m ² |
| Površina stana / Apartment area | | 74.87 m ² |



Lokacija / Location

U KOMPLEKSU / IN COMPLEX

U ZGRADI / IN BUILDING



Ovaj plan je zamišljen kao orijentacioni prikaz organizacije i veličine stana. Konačne dimenzije i detalji biće potvrđeni direktno sa agentom prodaje.

This floor plan is intended as a conceptual guide to the apartment's layout and approximate size. Final dimensions and details will be confirmed directly with the sales agent.

