

KINGS FOUNTAIN DEDINJE

E-1-S4

Stan / Apartment

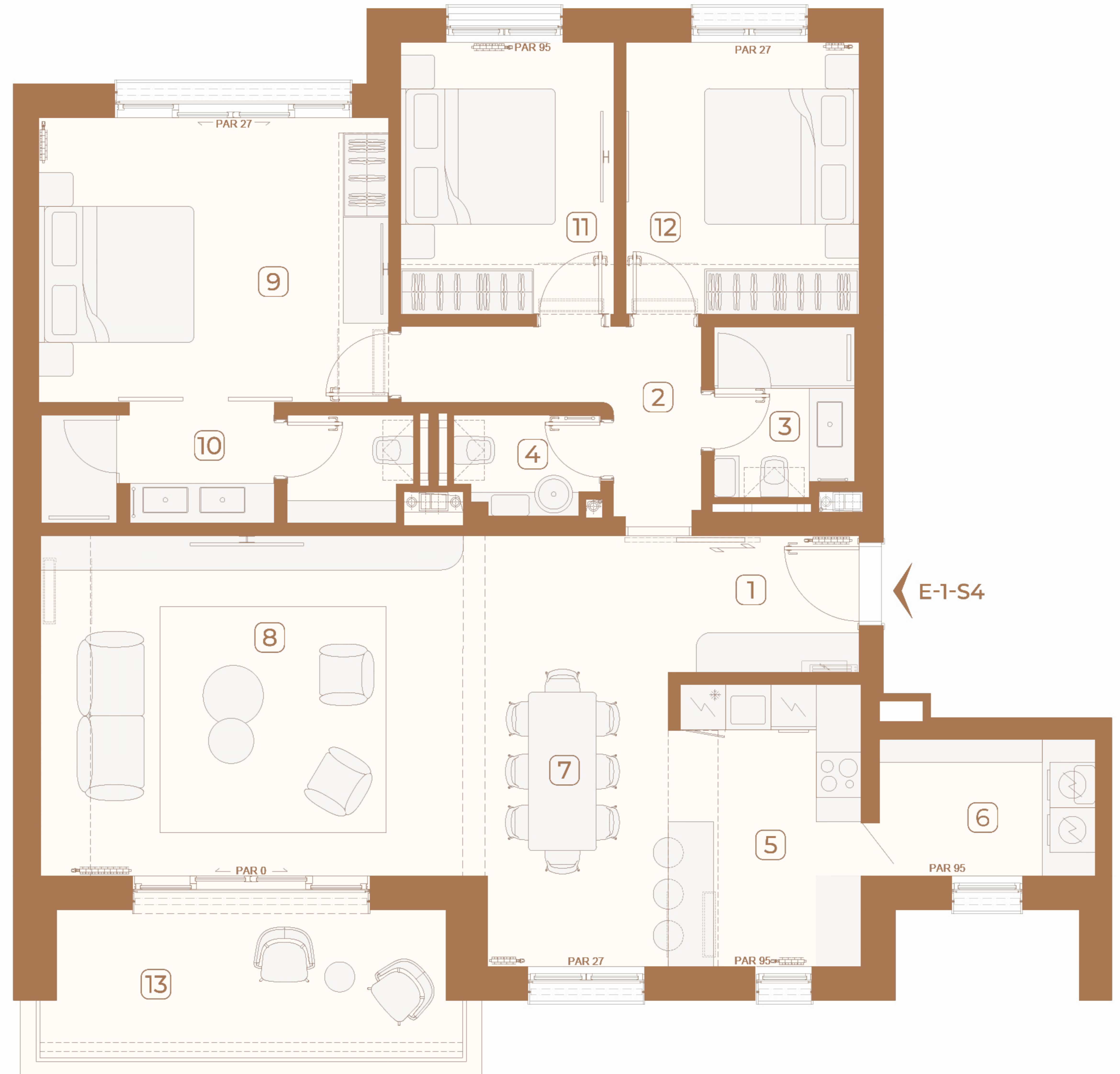
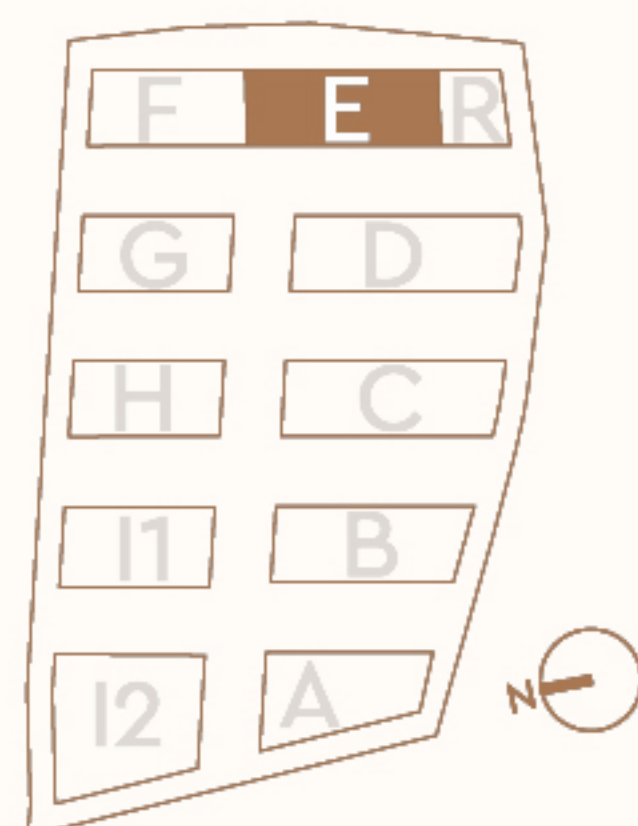
Zgrada / Building: E
Sprat / Floor: 1
Broj soba / Rooms: 3

1	Ulaz / Entrance	7.69 m ²
2	Degažman / Antechamber	5.70 m ²
3	Kupatilo / Bathroom	4.07 m ²
4	Toalet / Toilet	2.40 m ²
5	Kuhinja / Kitchen	9.43 m ²
6	Vešernica i ostava / Laundry & Storage	5.14 m ²
7	Trpezarija / Dining room	10.61 m ²
8	Dnevna soba / Living room	26.72 m ²
9	Spavaća soba / Bedroom	17.44 m ²
10	Kupatilo / Bathroom	6.73 m ²
11	Spavaća soba / Bedroom	10.21 m ²
12	Spavaća soba / Bedroom	11.15 m ²
Zatvoreni prostor / Indoor area		117.29 m ²
13	Terasa / Terrace	10.53 m ²
Otvoreni prostor / Outdoor area		10.53 m ²
Površina stana / Apartment area		127.82 m ²

Lokacija / Location

U KOMPLEKSU / IN COMPLEX

U ZGRADI / IN BUILDING



Ovaj plan je zamišljen kao orijentacioni prikaz organizacije i veličine stana. Konačne dimenzije i detalji biće potvrđeni direktno sa agentom prodaje.

This floor plan is intended as a conceptual guide to the apartment's layout and approximate size. Final dimensions and details will be confirmed directly with the sales agent.