

KINGS FOUNTAIN DEDINJE

E-3-S10

Stan / Apartment

Zgrada / Building: E
Sprat / Floor: III
Broj soba / Rooms: 1

1	Ulaz / Entrance	11.08 m ²
2	Degažman / Antechamber	3.45 m ²
3	Kupatilo / Bathroom	3.48 m ²
4	Kuhinja / Kitchen	7.37 m ²
5	Dnevna soba i trpezarija / Living & Dining	35.58 m ²
6	Spavaća soba / Bedroom	9.54 m ²

Zatvoreni prostor / Indoor area 70.50 m²

7	Terasa / Terrace	40.73 m ²
8	Terasa / Terrace	4.57 m ²
9	Terasa / Terrace	3.21 m ²

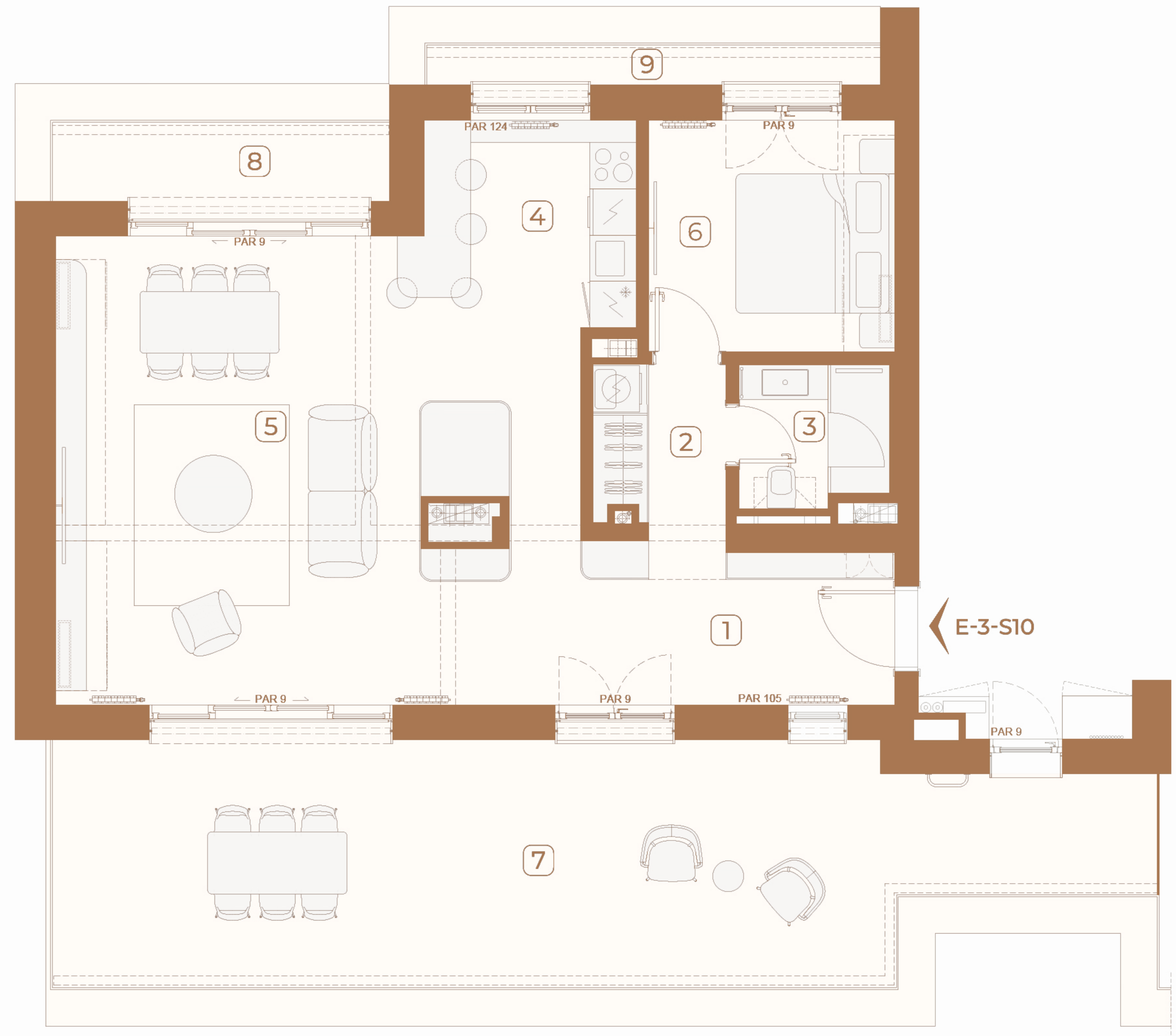
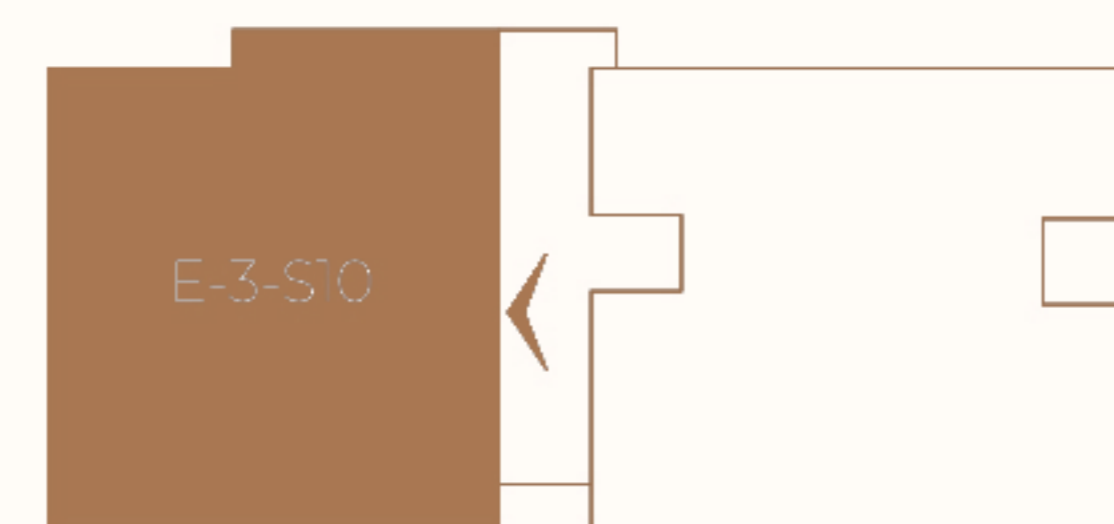
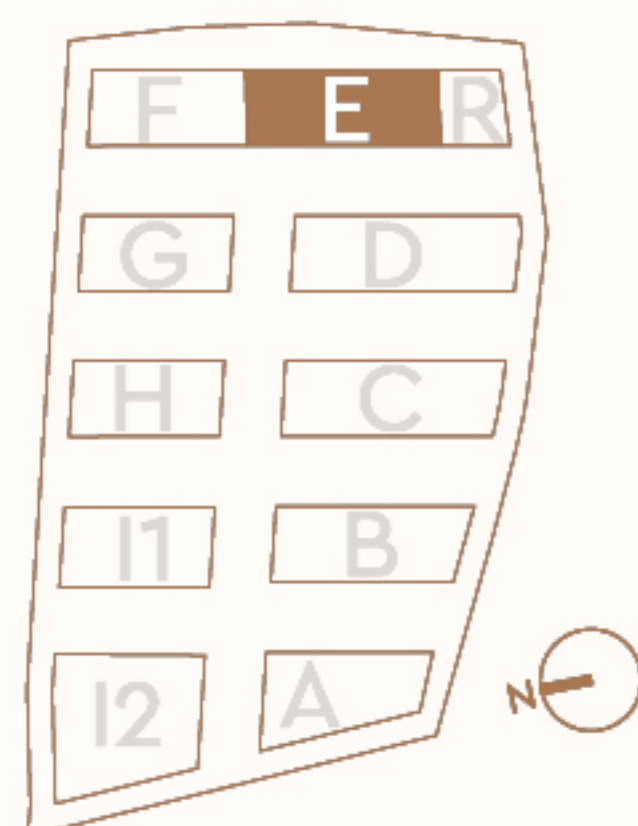
Otvoreni prostor / Outdoor area 48.51 m²

Površina stana / Apartment area 119.01 m²

Lokacija / Location

U KOMPLEKSU / IN COMPLEX

U ZGRADI / IN BUILDING



Ovaj plan je zamišljen kao orijentacioni prikaz organizacije i veličine stana. Konačne dimenzije i detalji biće potvrđeni direktno sa agentom prodaje.

This floor plan is intended as a conceptual guide to the apartment's layout and approximate size. Final dimensions and details will be confirmed directly with the sales agent.

