

KINGS FOUNTAIN DEDINJE

E-3-S11

Stan / Apartment

Zgrada / Building: E
 Sprat / Floor: III
 Broj soba / Rooms: 1

1	Ulaz / Entrance	7.95 m ²
2	Kupatilo / Bathroom	4.73 m ²
3	Kuhinja / Kitchen	8.60 m ²
4	Dnevna soba i trpezarija / Living & Dining	30.11 m ²
5	Spavaća soba / Bedroom	12.13 m ²
6	Kupatilo / Bathroom	2.73 m ²

Zatvoreni prostor / Indoor area 63.25 m²

7 Terasa / Terrace 43.82 m²

8 Terasa / Terrace 13.92 m²

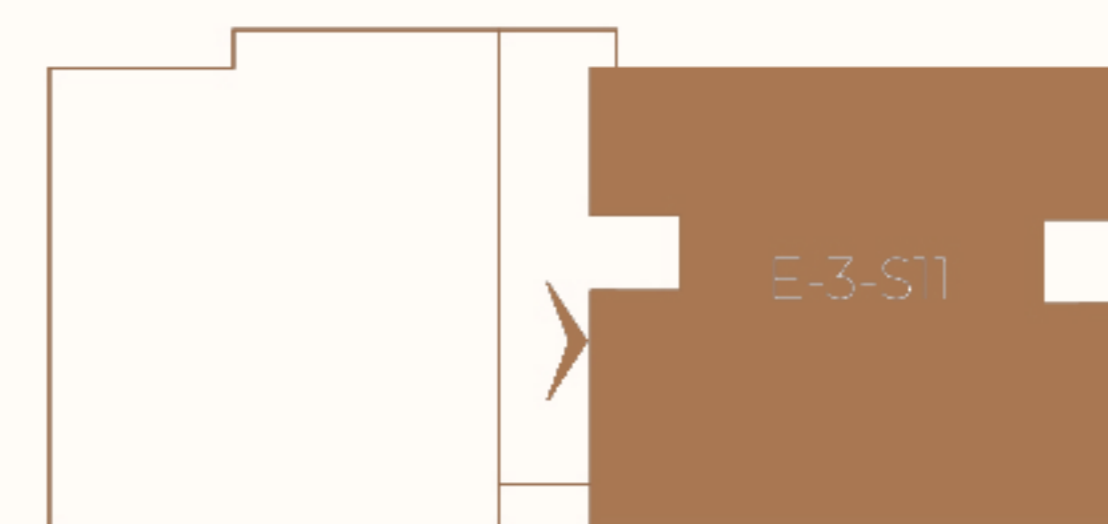
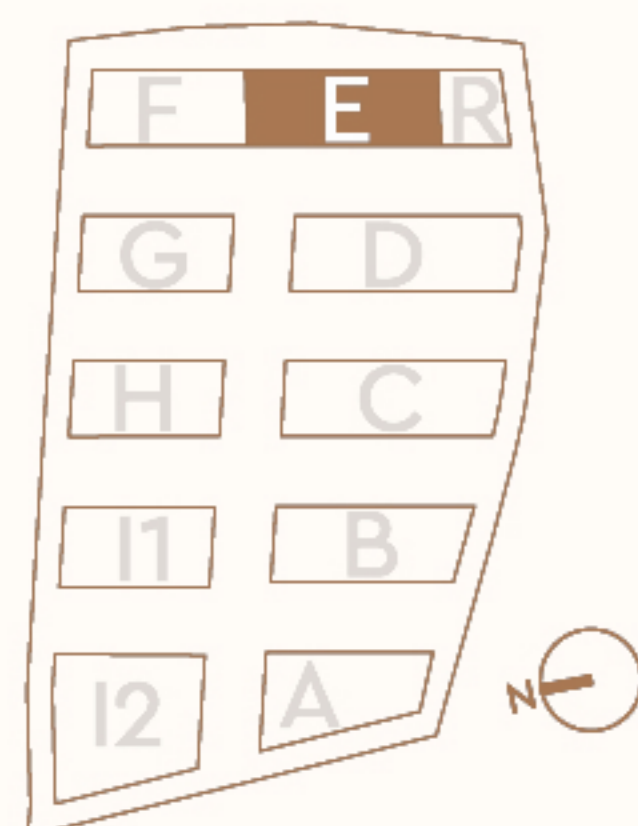
Otvoreni prostor / Outdoor area 57.74 m²

Površina stana / Apartment area 133.99 m²

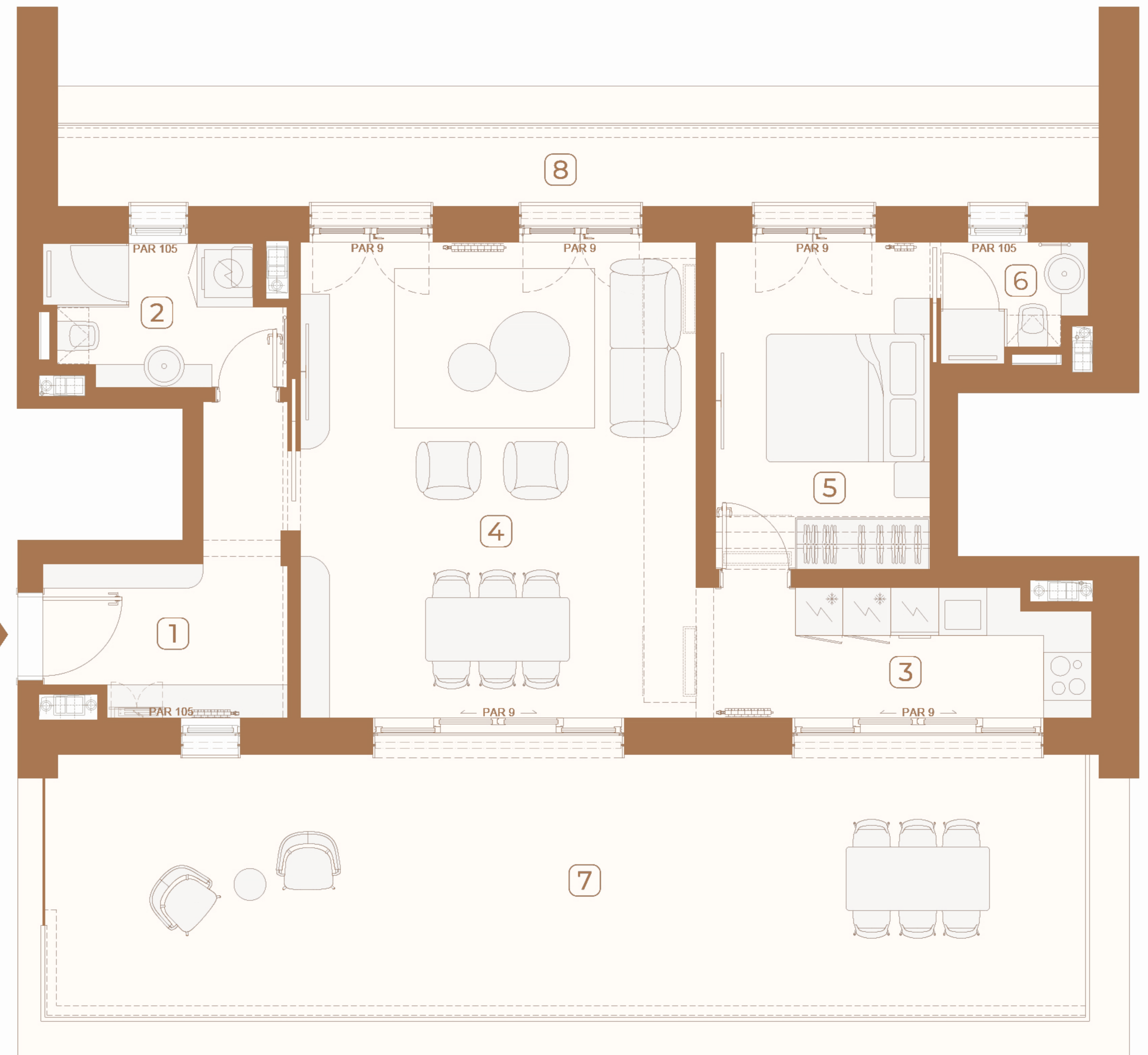
Lokacija / Location

U KOMPLEKSU / IN COMPLEX

U ZGRADI / IN BUILDING



E-3-S11



Ovaj plan je zamišljen kao orijentacioni prikaz organizacije i veličine stana. Konačne dimenzije i detalji biće potvrđeni direktno sa agentom prodaje.

This floor plan is intended as a conceptual guide to the apartment's layout and approximate size. Final dimensions and details will be confirmed directly with the sales agent.