

KINGS FOUNTAIN DEDINJE

F-3-S7

Stan / Apartment

Zgrada / Building: E
 Sprat / Floor: III
 Broj soba / Rooms: 1

1	Ulaz / Entrance	9.09 m ²
2	Kupatilo / Bathroom	5.21 m ²
3	Kuhinja / Kitchen	8.48 m ²
4	Dnevna soba i trpezarija / Living & Dining	30.42 m ²
5	Spavaća soba / Bedroom	13.38 m ²
6	Garderoba / Wardrobe	2.63 m ²
7	Kupatilo / Bathroom	4.38 m ²

Zatvoreni prostor / Indoor area 73.59 m²

8 Terasa / Terrace 46.16 m²

9 Terasa / Terrace 15.09 m²

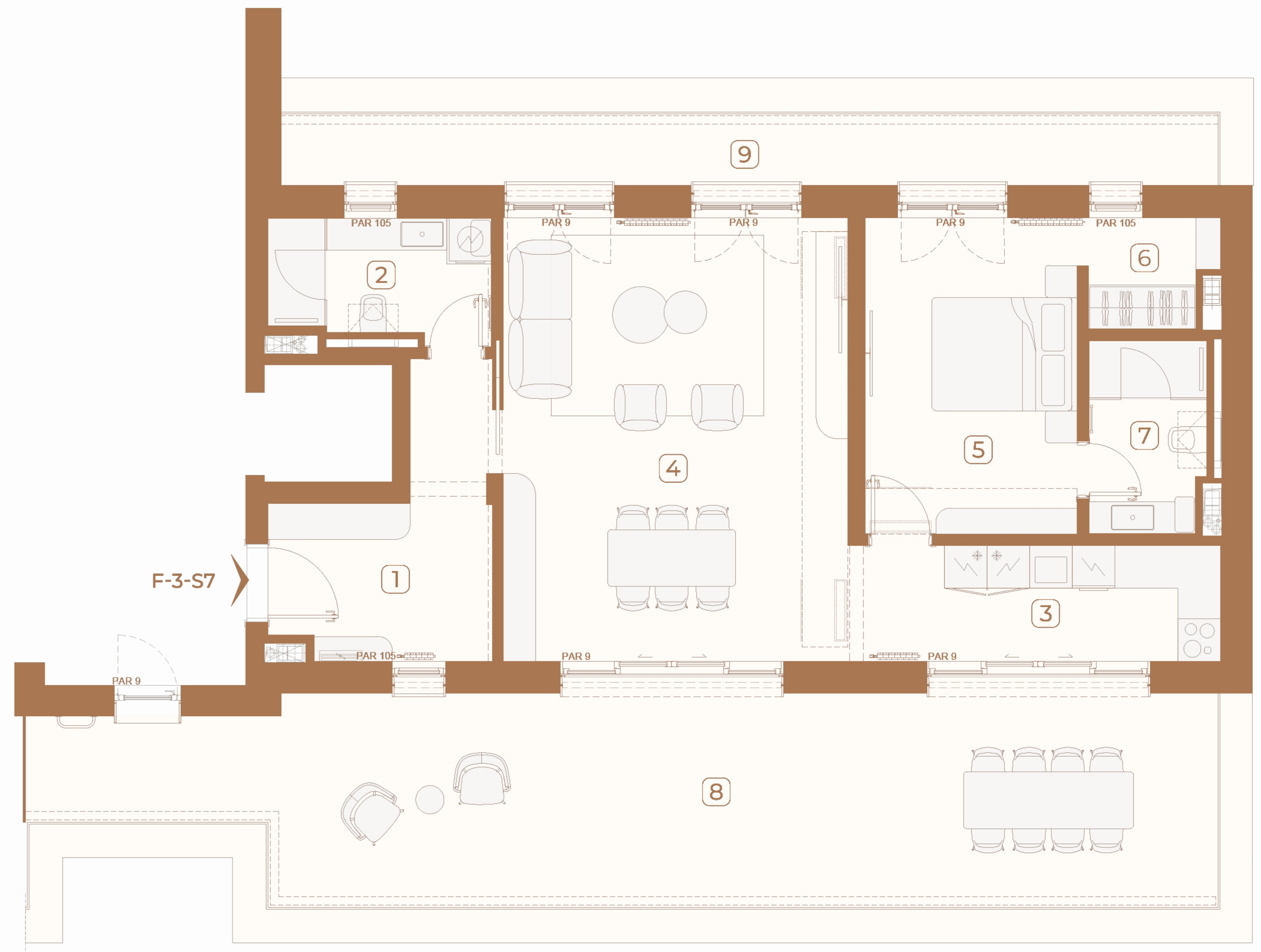
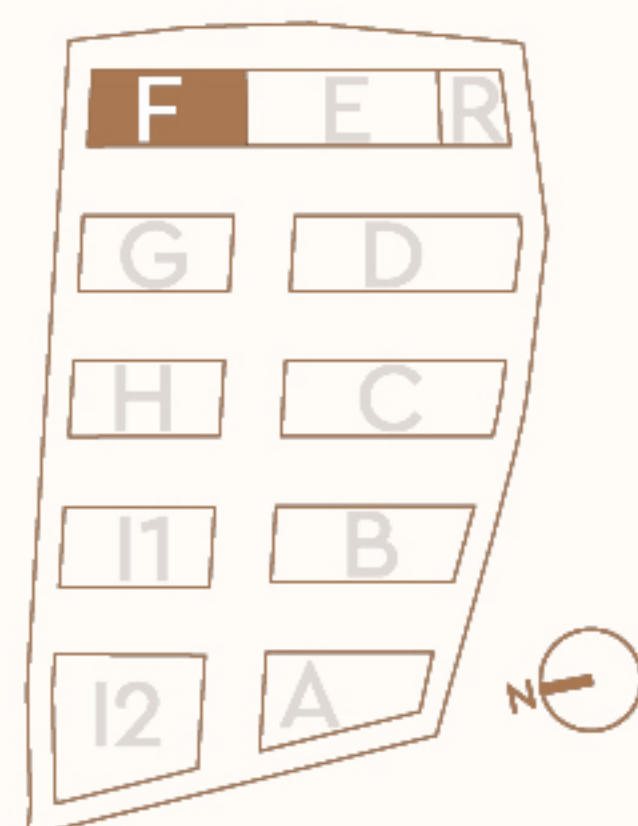
Otvoreni prostor / Outdoor area 61.25 m²

Površina stana / Apartment area 134.84 m²

Lokacija / Location

U KOMPLEKSU / IN COMPLEX

U ZGRADI / IN BUILDING



Ovaj plan je zamišljen kao orijentacioni prikaz organizacije i veličine stana. Konačne dimenzije i detalji biće potvrđeni direktno sa agentom prodaje.

This floor plan is intended as a conceptual guide to the apartment's layout and approximate size. Final dimensions and details will be confirmed directly with the sales agent.