

KINGS FOUNTAIN DEDINJE

F-2-S6

Stan / Apartment

Zgrada / Building: F
Sprat / Floor: II
Broj soba / Rooms: 3

1	Ulaz / Entrance	5.78 m ²
2	Vešernica i ostava / Laundry & Storage	1.97 m ²
3	Kuhinja / Kitchen	8.96 m ²
4	Trpezarija / Dining room	14.43 m ²
5	Dnevna soba / Living room	30.31 m ²
6	Degažman / Antechamber	12.74 m ²
7	Kupatilo / Bathroom	4.48 m ²
8	Spavaća soba / Bedroom	16.79 m ²
9	Kupatilo / Bathroom	5.41 m ²
10	Spavaća soba / Bedroom	12.89 m ²
11	Spavaća soba / Bedroom	11.42 m ²
12	Garderoba / Wardrobe	4.09 m ²

Zatvoreni prostor / Indoor area 129.27 m²

13 Terasa / Terrace 9.10 m²

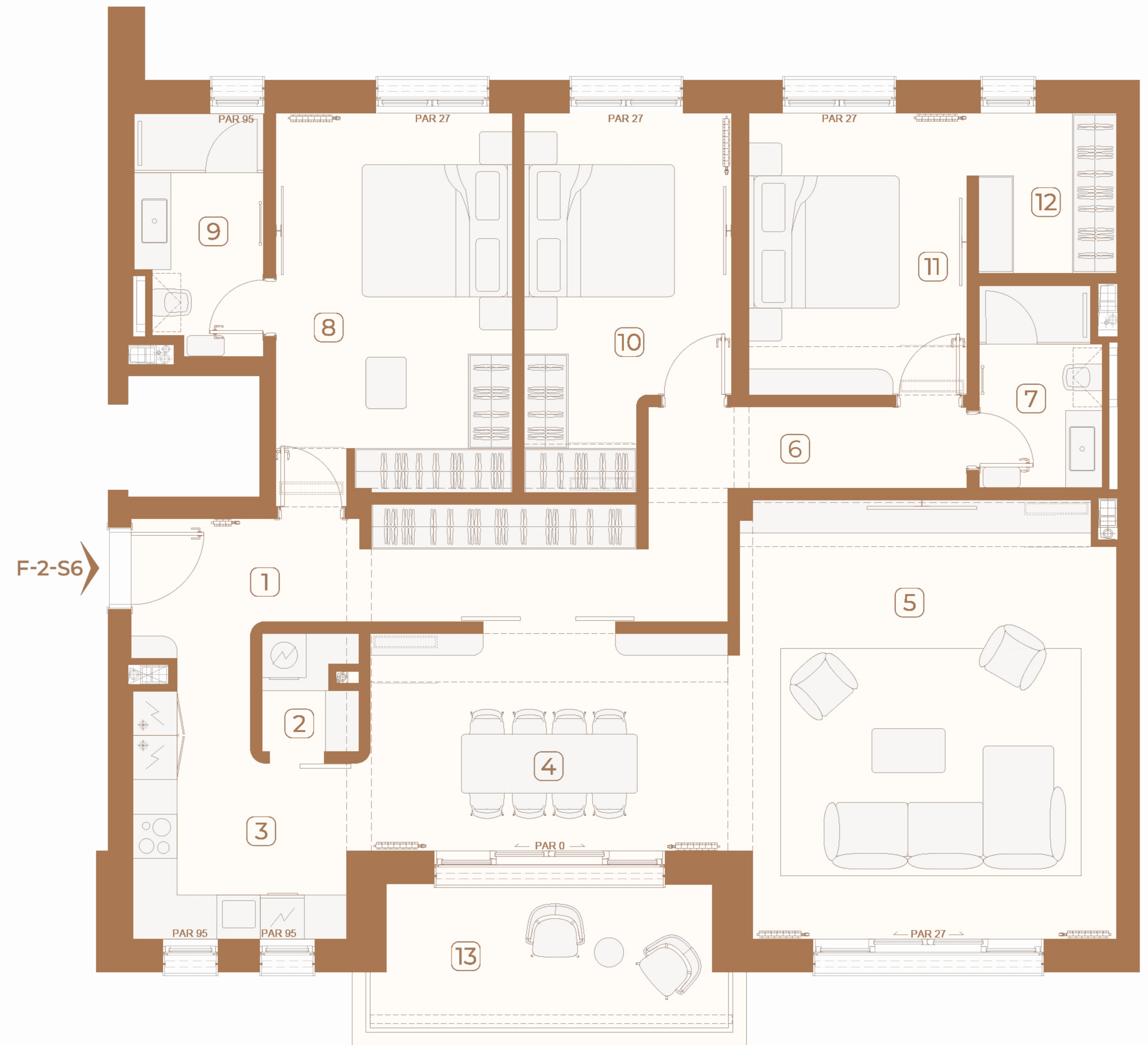
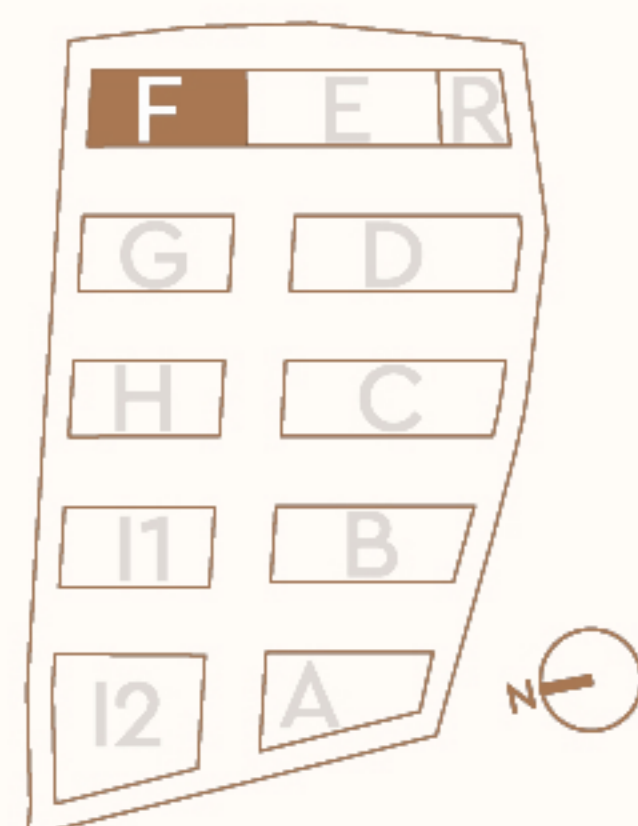
Otvoreni prostor / Outdoor area 9.10 m²

Površina stana / Apartment area 138.37 m²

Lokacija / Location

U KOMPLEKSU / IN COMPLEX

U ZGRADI / IN BUILDING



Ovaj plan je zamišljen kao orijentacioni prikaz organizacije i veličine stana. Konačne dimenzije i detalji biće potvrđeni direktno sa agentom prodaje.

This floor plan is intended as a conceptual guide to the apartment's layout and approximate size. Final dimensions and details will be confirmed directly with the sales agent.