

KINGS FOUNTAIN DEDINJE

G-1-S4

Stan / Apartment

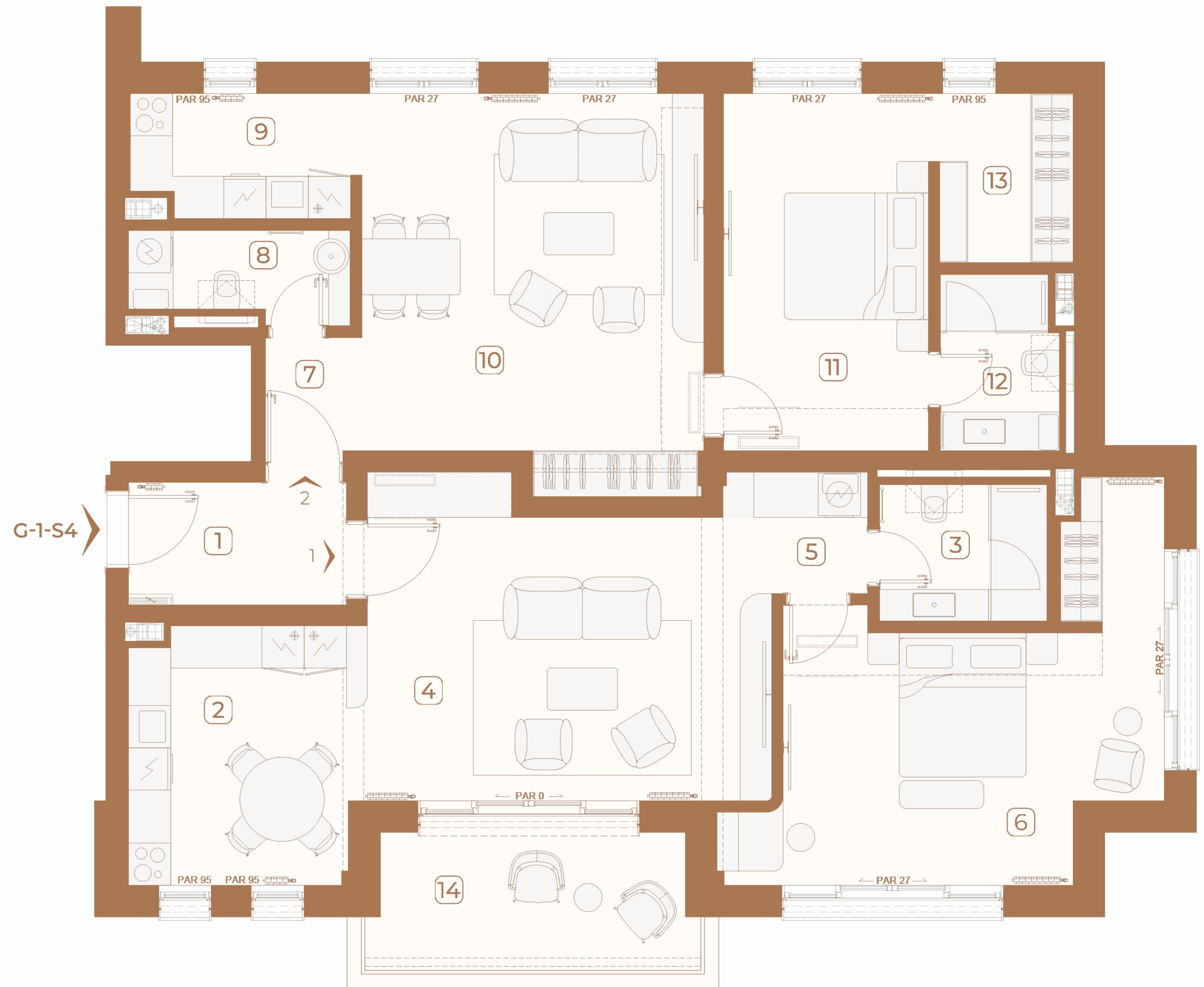
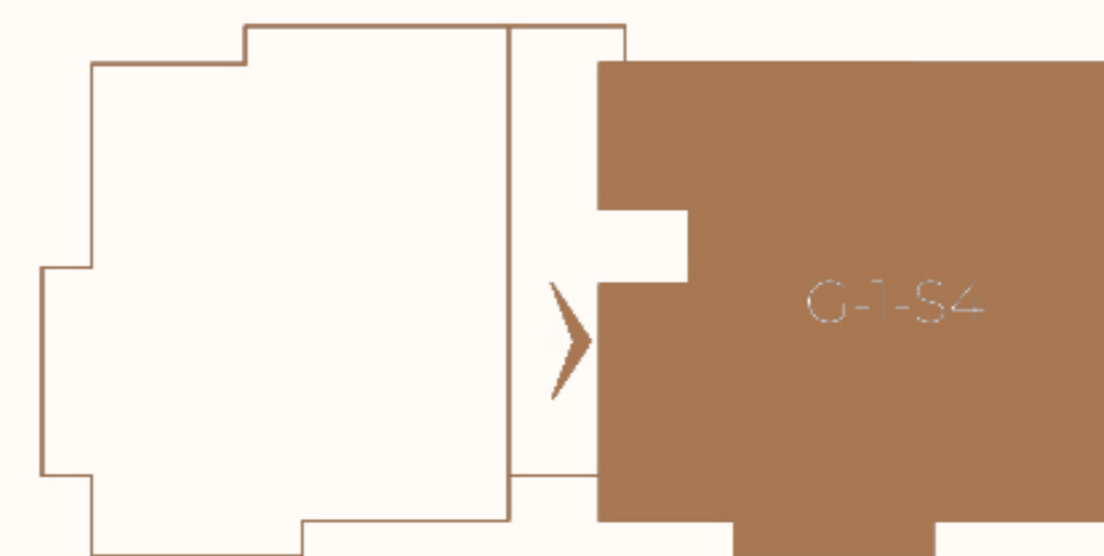
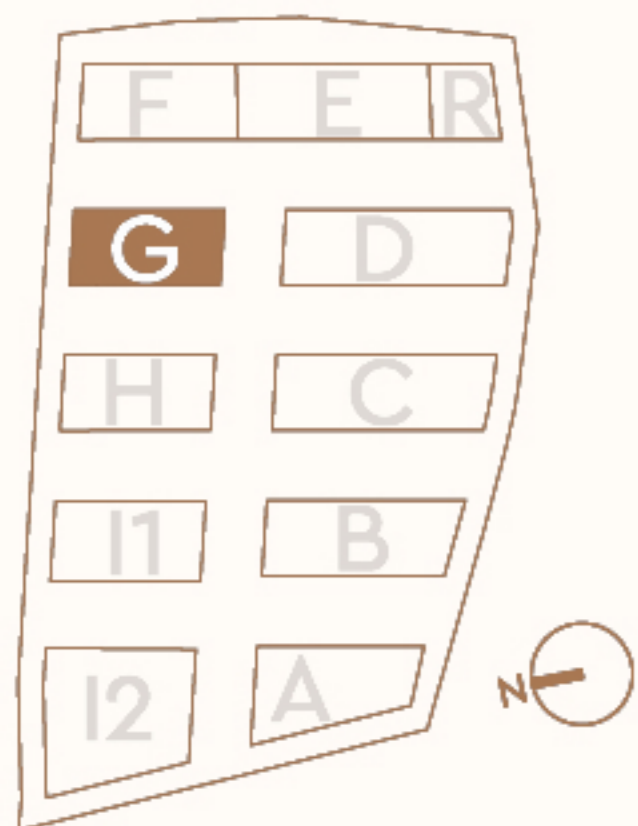
Zgrada / Building:	G
Sprat / Floor:	1
Broj soba / Rooms:	2
Broj jedinica / Units:	2

1	Ulaz / Entrance	5.39 m ²
2	Kuhinja i trpezarija / Kitchen & Dining	11.34 m ²
3	Kupatilo / Bathroom	4.62 m ²
4	Dnevna soba / Living room	24.42 m ²
5	Degažman / Antechamber	3.55 m ²
6	Spavaća soba / Bedroom	22.34 m ²
7	Degažman / Antechamber	2.39 m ²
8	Kupatilo / Bathroom	3.80 m ²
9	Kuhinja / Kitchen	5.51 m ²
10	Dnevna soba i trpezarija / Living & Dining	26.23 m ²
11	Spavaća soba / Bedroom	14.80 m ²
12	Kupatilo / Bathroom	4.10 m ²
13	Garderoba / Wardrobe	4.56 m ²
Zatvoreni prostor / Indoor area		133.05 m ²
14	Terasa / Terrace	8.86 m ²
Otvoreni prostor / Outdoor area		8.86 m ²
Površina stana / Apartment area		141.91 m ²

Lokacija / Location

U KOMPLEKSU / IN COMPLEX

U ZGRADI / IN BUILDING



Ovaj plan je zamišljen kao orijentacioni prikaz organizacije i veličine stana. Konačne dimenzije i detalji biće potvrđeni direktno sa agentom prodaje.

This floor plan is intended as a conceptual guide to the apartment's layout and approximate size. Final dimensions and details will be confirmed directly with the sales agent.