

# KINGS FOUNTAIN DEDINJE

## G-2-S6

Stan / Apartment

Zgrada / Building: G  
Sprat / Floor: II  
Broj soba / Rooms: 3

1	Ulaz / Entrance	11.24 m <sup>2</sup>
2	Kuhinja / Kitchen	9.48 m <sup>2</sup>
3	Ostava / Pantry	2.33 m <sup>2</sup>
4	Trpezarija / Dining room	15.07 m <sup>2</sup>
5	Dnevna soba / Living room	35.23 m <sup>2</sup>
6	Degažman / Antechamber	6.88 m <sup>2</sup>
7	Kupatilo / Bathroom	4.69 m <sup>2</sup>
8	Spavaća soba / Bedroom	16.81 m <sup>2</sup>
9	Kupatilo / Bathroom	5.01 m <sup>2</sup>
10	Spavaća soba / Bedroom	13.02 m <sup>2</sup>
11	Spavaća soba / Bedroom	11.72 m <sup>2</sup>
12	Garderoba / Wardrobe	4.09 m <sup>2</sup>

Zatvoreni prostor / Indoor area 135.57 m<sup>2</sup>

13 Terasa / Terrace 8.86 m<sup>2</sup>

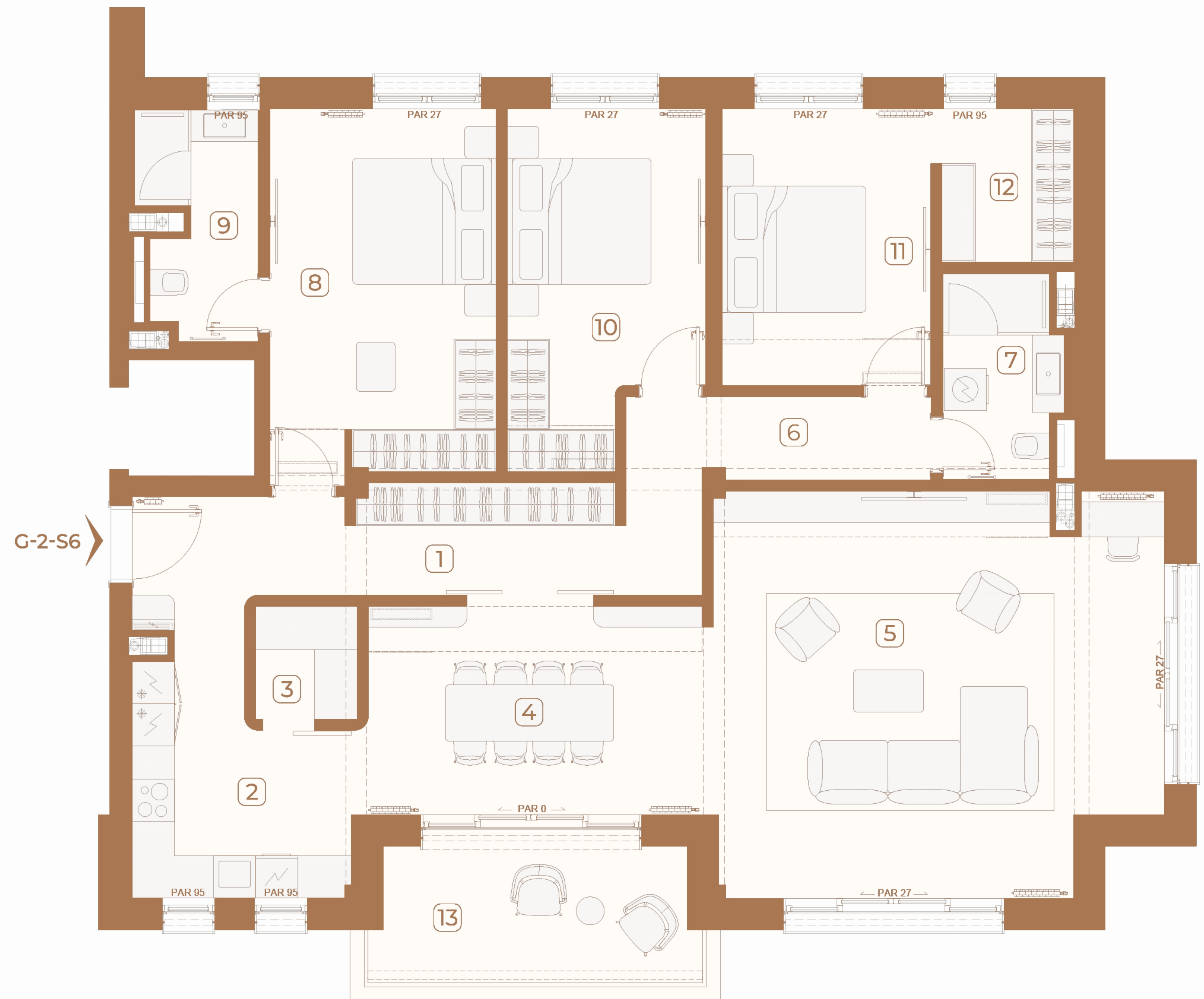
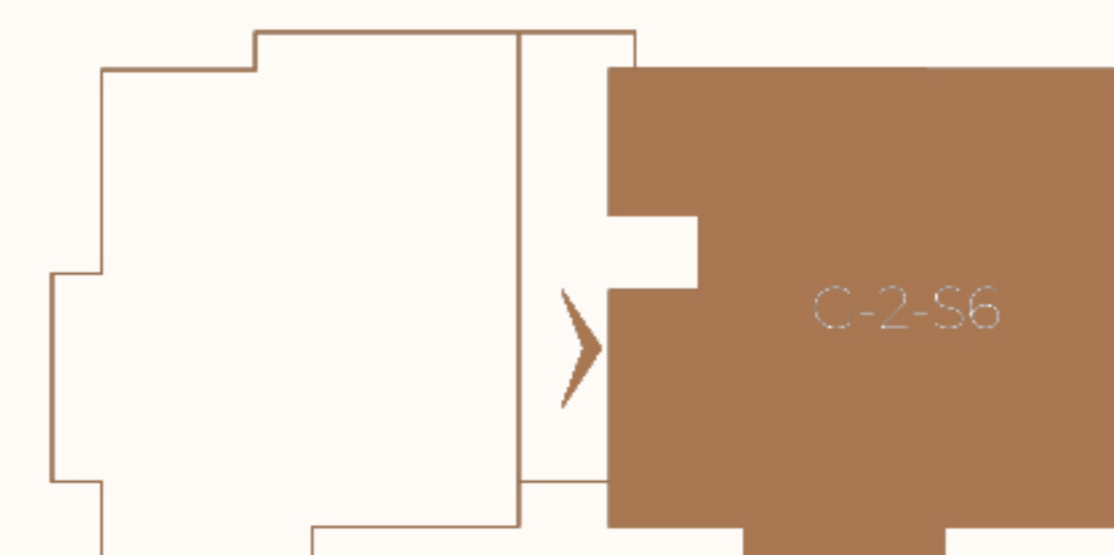
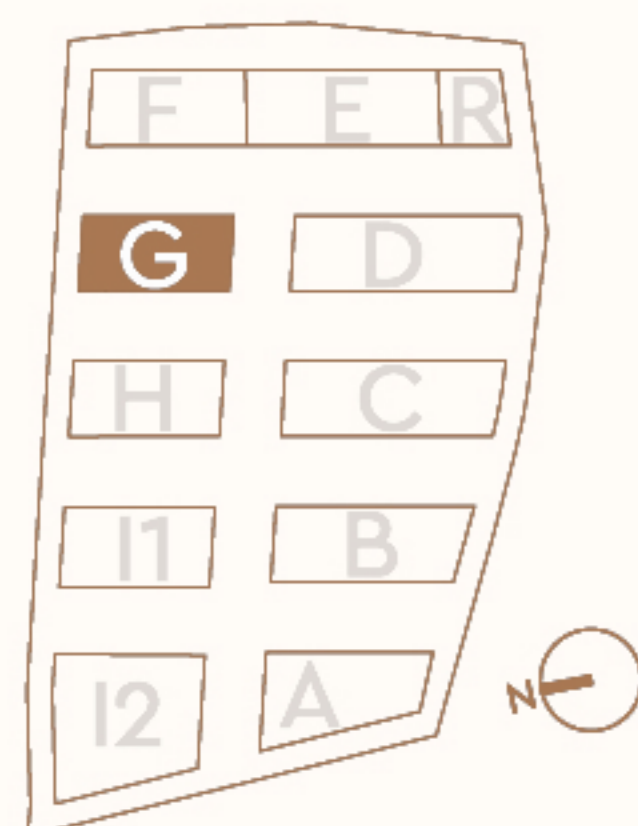
Otvoreni prostor / Outdoor area 8.86 m<sup>2</sup>

Površina stana / Apartment area 144.43 m<sup>2</sup>

## Lokacija / Location

U KOMPLEKSU / IN COMPLEX

U ZGRADI / IN BUILDING



Ovaj plan je zamišljen kao orijentacioni prikaz organizacije i veličine stana. Konačne dimenzije i detalji biće potvrđeni direktno sa agentom prodaje.

This floor plan is intended as a conceptual guide to the apartment's layout and approximate size. Final dimensions and details will be confirmed directly with the sales agent.