

# KINGS FOUNTAIN DEDINJE

## G-3-S7

Stan / Apartment

Zgrada / Building: G  
Sprat / Floor: III  
Broj soba / Rooms: 1

1	Ulaz / Entrance	9.14 m <sup>2</sup>
2	Kupatilo / Bathroom	4.89 m <sup>2</sup>
3	Kuhinja / Kitchen	8.56 m <sup>2</sup>
4	Dnevna soba i trpezarija / Living & Dining	30.42 m <sup>2</sup>
5	Spavaća soba / Bedroom	13.37m <sup>2</sup>
6	Kupatilo / Bathroom	4.39 m <sup>2</sup>
7	Garderoba / Wardrobe	2.70 m <sup>2</sup>

Zatvoreni prostor / Indoor area 73.47 m<sup>2</sup>

8 Terasa / Terrace 50.98 m<sup>2</sup>

9 Terasa / Terrace 13.98 m<sup>2</sup>

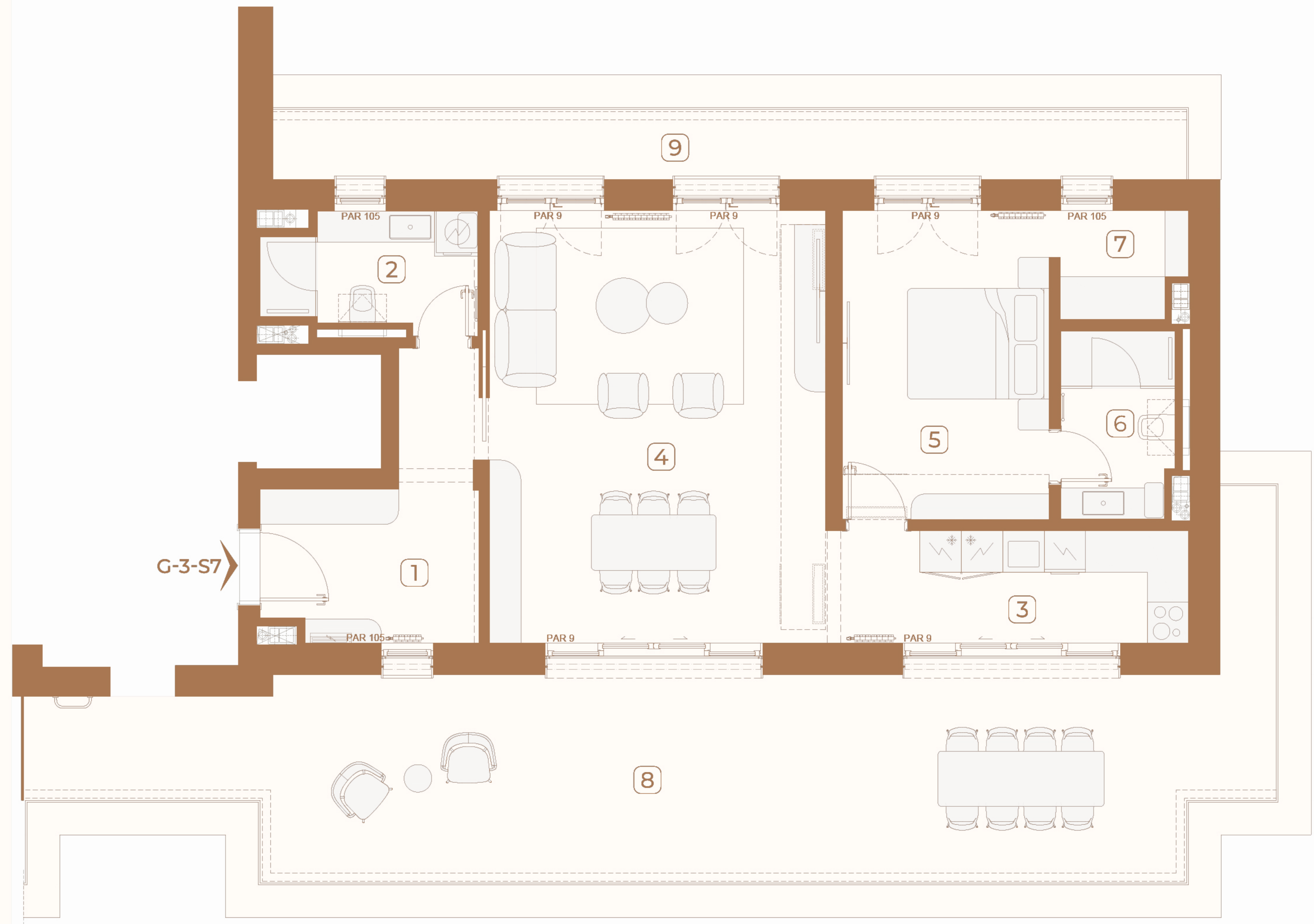
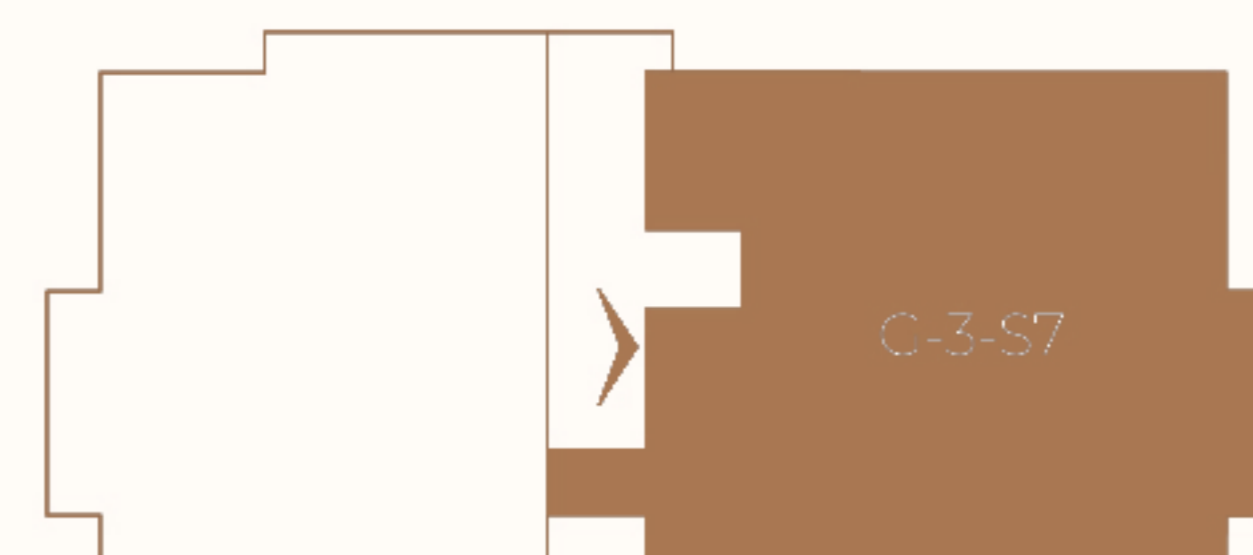
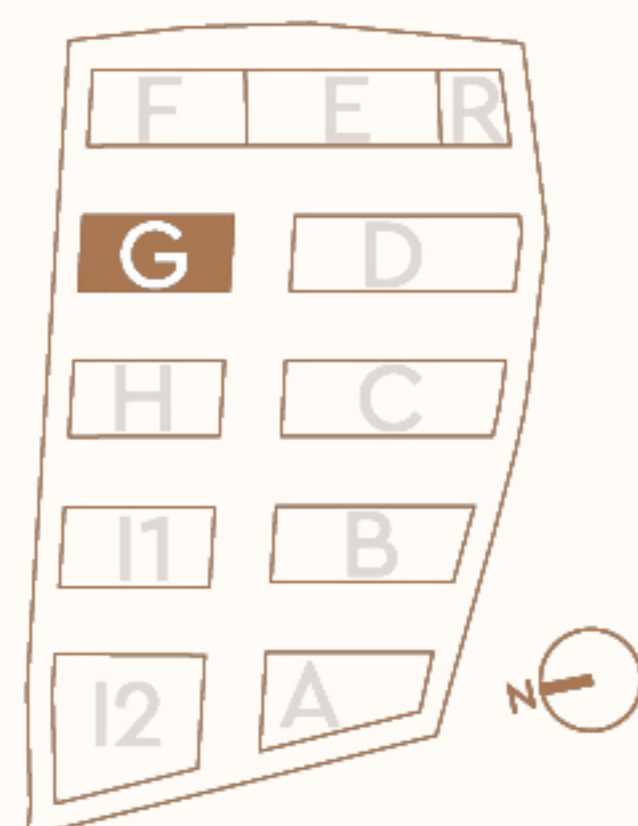
Otvoreni prostor / Outdoor area 64.96 m<sup>2</sup>

Površina stana / Apartment area 138.43 m<sup>2</sup>

## Lokacija / Location

U KOMPLEKSU / IN COMPLEX

U ZGRADI / IN BUILDING



Ovaj plan je zamišljen kao orijentacioni prikaz organizacije i veličine stana. Konačne dimenzije i detalji biće potvrđeni direktno sa agentom prodaje.

This floor plan is intended as a conceptual guide to the apartment's layout and approximate size. Final dimensions and details will be confirmed directly with the sales agent.

