

# KINGS FOUNTAIN DEDINJE

## B1-0-S1

Stan / Apartment

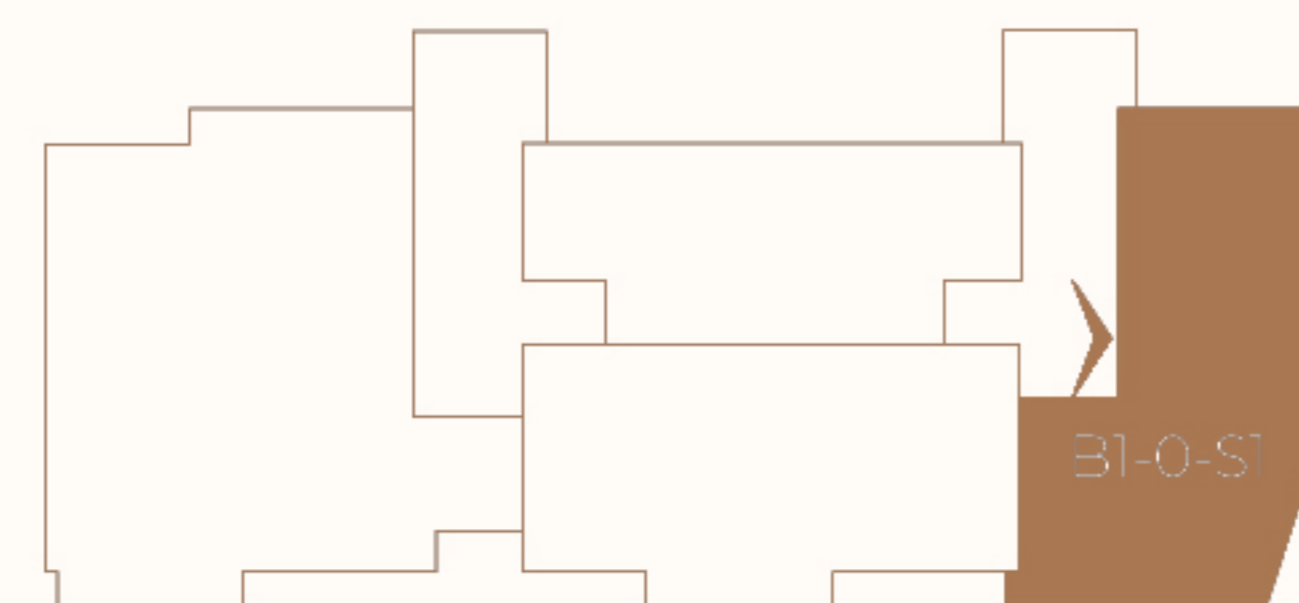
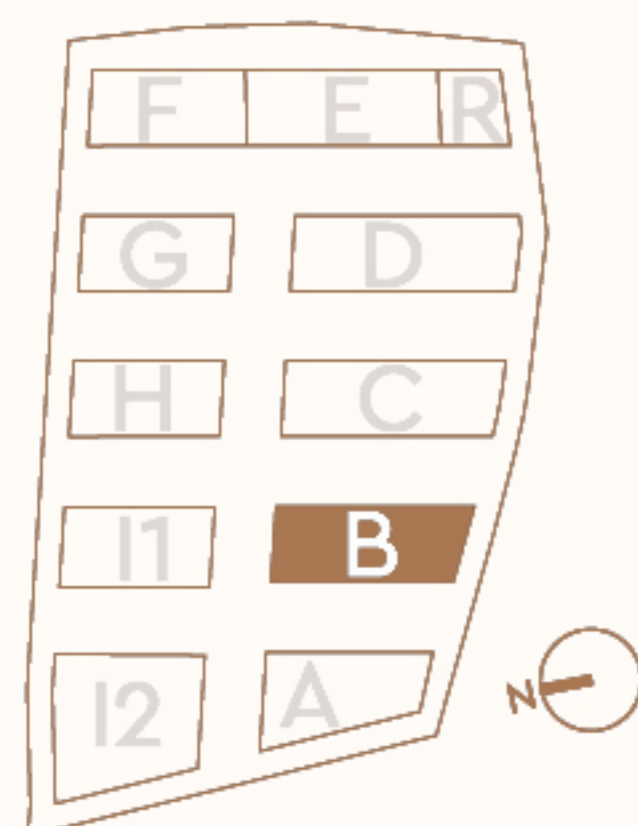
Zgrada / Building: B  
Sprat / Floor: Prizemlje / Ground floor  
Broj soba / Rooms: 1

1	Ulaz / Entrance	8.07 m <sup>2</sup>
2	Toalet / Toilet	3.51 m <sup>2</sup>
3	Kuhinja sa trpezarijom / Kitchen & Dining	9.15 m <sup>2</sup>
4	Dnevna soba / Living Room	23.12 m <sup>2</sup>
5	Spavaća soba / Bedroom	15.08 m <sup>2</sup>
6	Kupatilo / Bathroom	4.76 m <sup>2</sup>
7	Garderoba / Wardrobe	5.12 m <sup>2</sup>
Zatvoreni prostor / Indoor area		68.81 m <sup>2</sup>
8	Terasa / Terrace	2.21 m <sup>2</sup>
Otvoreni prostor / Outdoor area		2.21 m <sup>2</sup>
Površina stana / Apartment area		71.02 m <sup>2</sup>

### Lokacija / Location

U KOMPLEKSU / IN COMPLEX

U ZGRADI / IN BUILDING



Ovaj plan je zamišljen kao orijentacioni prikaz organizacije i veličine stana. Konačne dimenzije i detalji biće potvrđeni direktno sa agentom prodaje.

This floor plan is intended as a conceptual guide to the apartment's layout and approximate size. Final dimensions and details will be confirmed directly with the sales agent.

