

KINGS FOUNTAIN DEDINJE

C1-0-S1

Stan / Apartment

Zgrada / Building: C
Spat / Floor: Prizemlje / Ground floor
Broj soba / Rooms: 3

1	Ulaz / Entrance	10.43 m ²
2	Kuhinja / Kitchen	8.91 m ²
3	Ostava / Pantry	1.22 m ²
4	Vešernica / Laundry	2.28 m ²
5	Trpezarija / Dining room	19.09 m ²
6	Dnevna soba / Living room	21.90 m ²
7	Degažman / Antechamber	4.65 m ²
8	Kupatilo / Bathroom	4.03 m ²
9	Spavaća soba / Bedroom	18.02 m ²
10	Kupatilo / Bathroom	4.13 m ²
11	Spavaća soba / Bedroom	10.62 m ²
12	Spavaća soba / Bedroom	13.02 m ²

Zatvoreni prostor / Indoor area 118.30 m²

13 Terasa / Terrace 9.37 m²

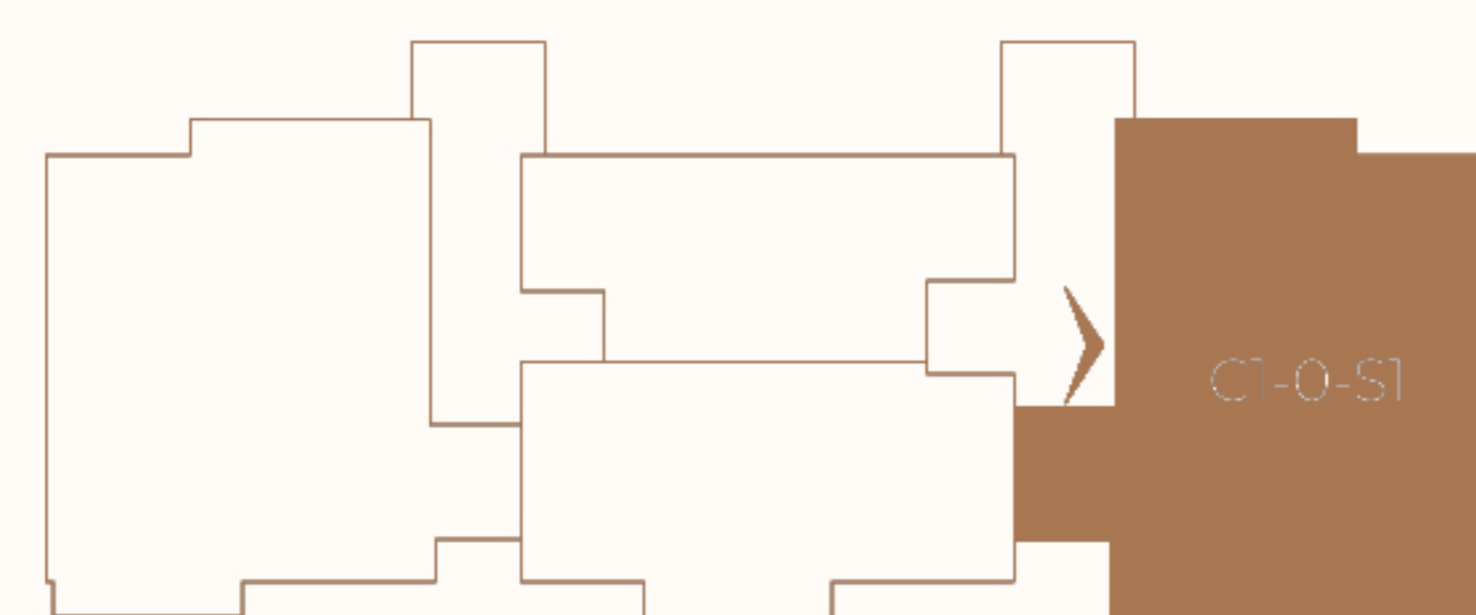
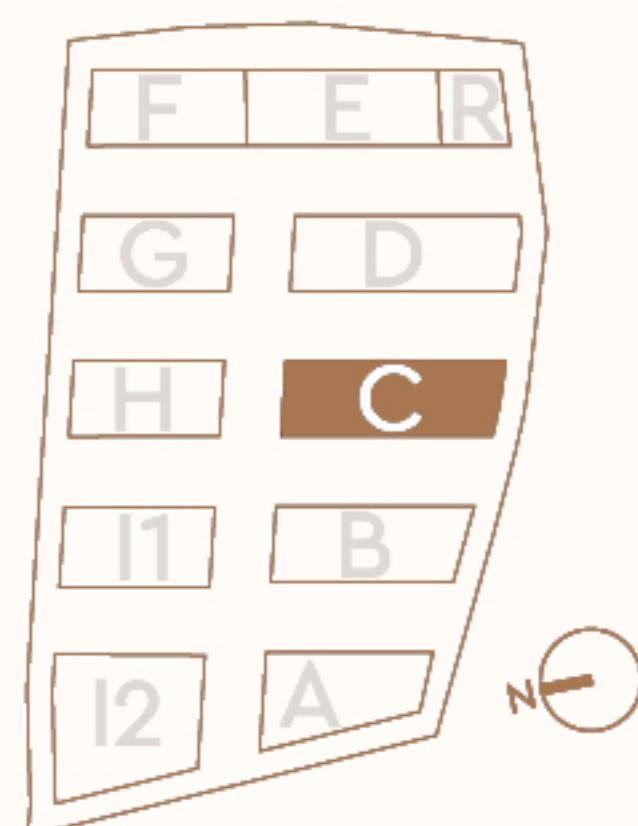
Otvoreni prostor / Outdoor area 9.37 m²

Površina stana / Apartment area 127.67 m²

Lokacija / Location

U KOMPLEKSU / IN COMPLEX

U ZGRADI / IN BUILDING



Ovaj plan je zamišljen kao orijentacioni prikaz organizacije i veličine stana. Konačne dimenzije i detalji biće potvrđeni direktno sa agentom prodaje.

This floor plan is intended as a conceptual guide to the apartment's layout and approximate size. Final dimensions and details will be confirmed directly with the sales agent.

