

KINGS FOUNTAIN DEDINJE

B2-3-S11

Stan / Apartment

Zgrada / Building: B
 Sprat / Floor: III
 Broj soba / Rooms: 1

1	Ulaz / Entrance	7.67 m ²
2	Kupatilo / Bathroom	4.86 m ²
3	Kuhinja / Kitchen	8.32 m ²
4	Dnevna soba i trpezarija / Living & Dining	29.56 m ²
5	Spavaća soba / Bedroom	12.11 m ²
6	Kupatilo / Bathroom	3.12 m ²

Zatvoreni prostor / Indoor area 65.64 m²

7 Terasa / Terrace 54.92 m²
 8 Terasa / Terrace 13.76 m²

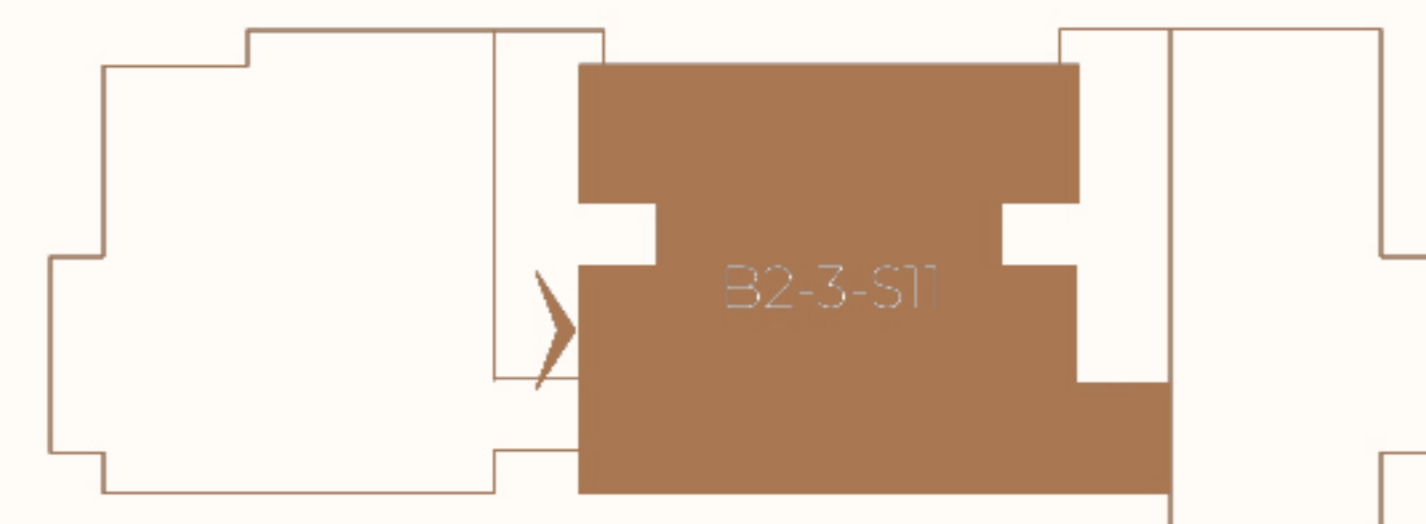
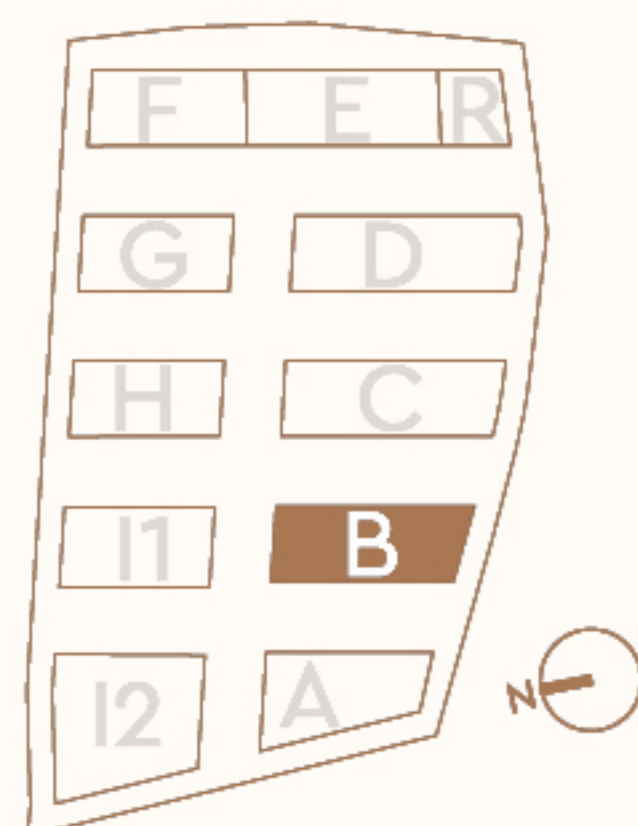
Otvoreni prostor / Outdoor area 68.68 m²

Površina stana / Apartment area 134.32 m²

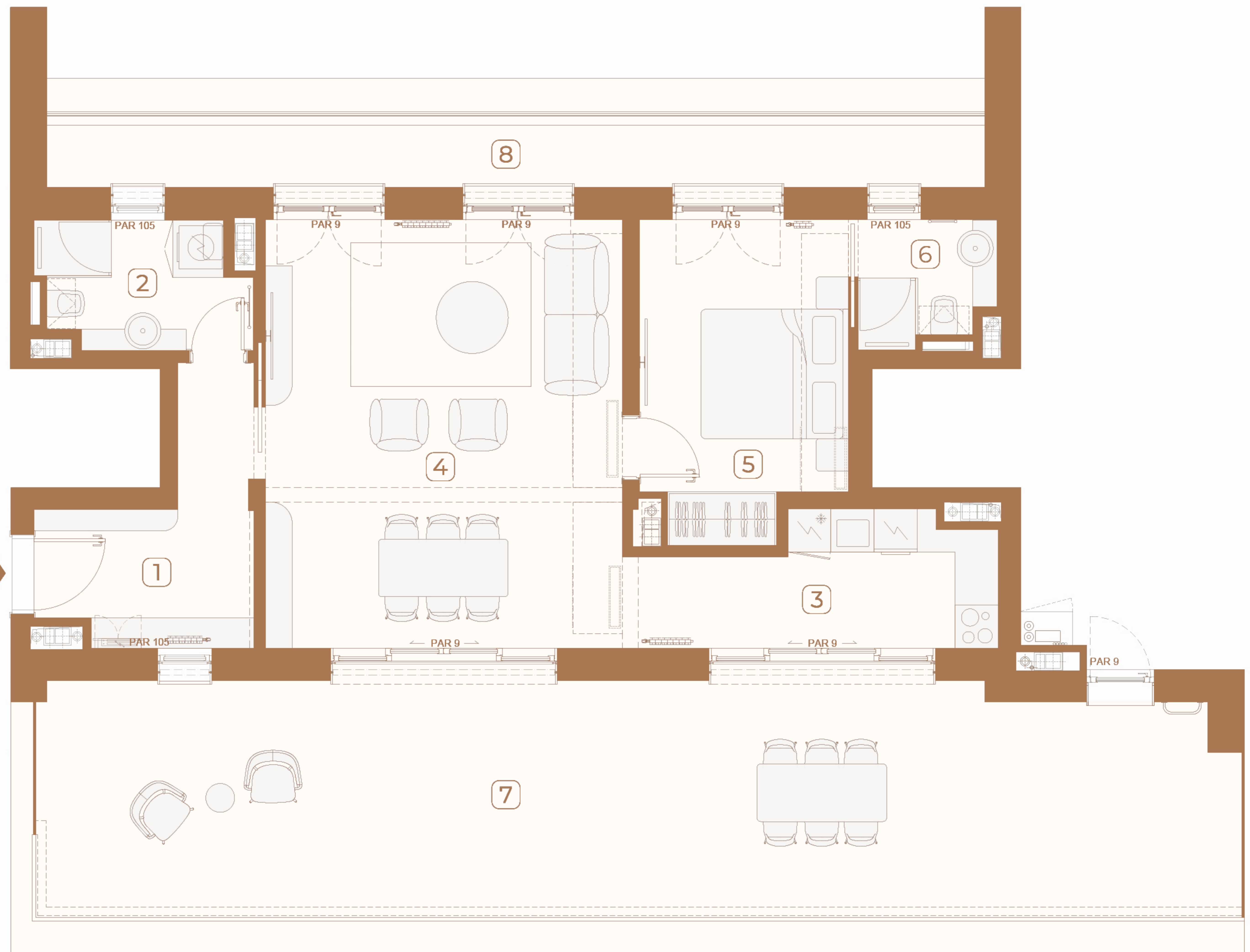
Lokacija / Location

U KOMPLEKSU / IN COMPLEX

U ZGRADI / IN BUILDING



B2-3-S11



Ovaj plan je zamišljen kao orijentacioni prikaz organizacije i veličine stana. Konačne dimenzije i detalji biće potvrđeni direktno sa agentom prodaje.

This floor plan is intended as a conceptual guide to the apartment's layout and approximate size. Final dimensions and details will be confirmed directly with the sales agent.

