

# KINGS FOUNTAIN DEDINJE

## C2-3-S11

Stan / Apartment

Zgrada / Building: C  
 Sprat / Floor: III  
 Broj soba / Rooms: 1

1	Ulaz / Entrance	7.70 m <sup>2</sup>
2	Kupatilo / Bathroom	4.86 m <sup>2</sup>
3	Kuhinja / Kitchen	7.54 m <sup>2</sup>
4	Dnevna soba i trpezarija / Living & Dining	29.82 m <sup>2</sup>
5	Spavaća soba / Bedroom	10.98 m <sup>2</sup>
6	Kupatilo / Bathroom	2.43 m <sup>2</sup>

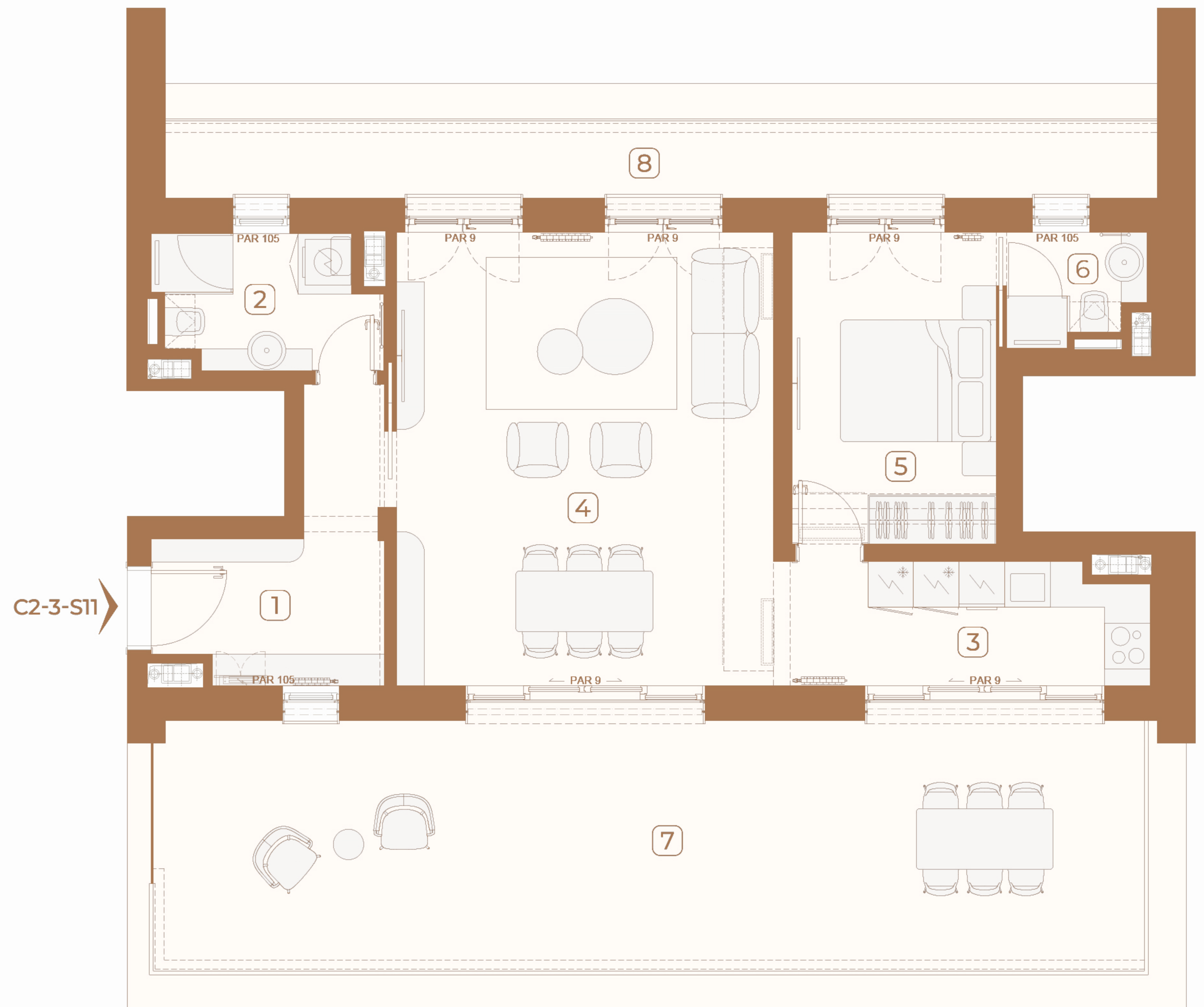
Zatvoreni prostor / Indoor area 63.33 m<sup>2</sup>

7 Terasa / Terrace 43.82 m<sup>2</sup>

8 Lođa / Loggia 13.76 m<sup>2</sup>

Otvoreni prostor / Outdoor area 57.58 m<sup>2</sup>

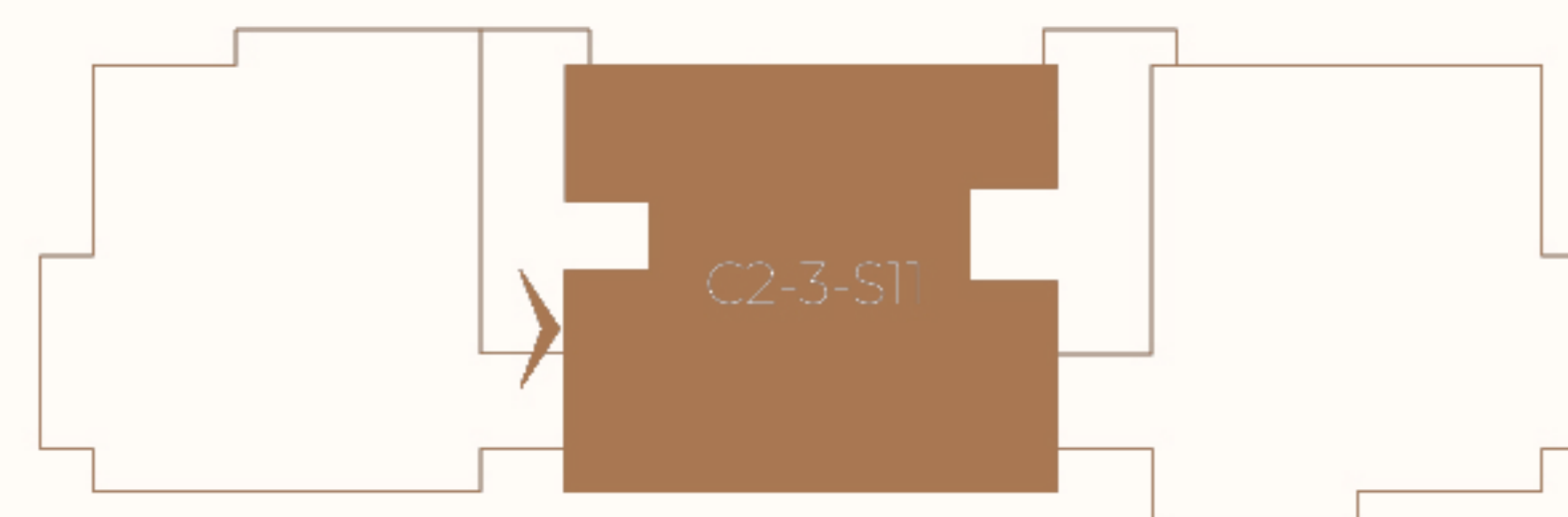
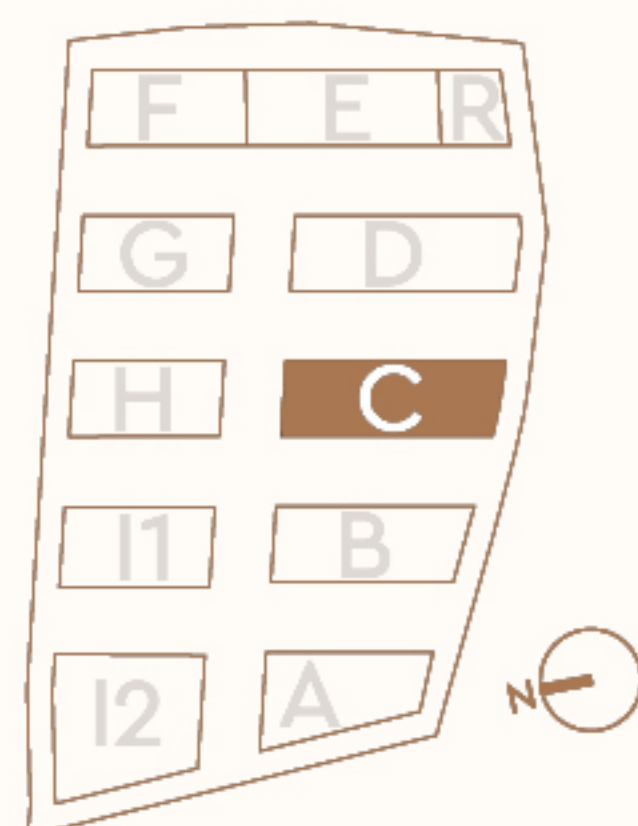
Površina stana / Apartment area 120.91 m<sup>2</sup>



## Lokacija / Location

U KOMPLEKSU / IN COMPLEX

U ZGRADI / IN BUILDING



Ovaj plan je zamišljen kao orijentacioni prikaz organizacije i veličine stana. Konačne dimenzije i detalji biće potvrđeni direktno sa agentom prodaje.

This floor plan is intended as a conceptual guide to the apartment's layout and approximate size. Final dimensions and details will be confirmed directly with the sales agent.

