

KINGS FOUNTAIN DEDINJE

D2-3-S11

Stan / Apartment

Zgrada / Building: D
 Sprat / Floor: III
 Broj soba / Rooms: 1

| | | |
|---|--------------------------------------------|----------------------|
| 1 | Ulaz / Entrance | 8.03 m ² |
| 2 | Kupatilo / Bathroom | 4.86 m ² |
| 3 | Kuhinja / Kitchen | 7.41 m ² |
| 4 | Dnevna soba i trpezarija / Living & Dining | 29.72 m ² |
| 5 | Spavaća soba / Bedroom | 10.85 m ² |
| 6 | Kupatilo / Bathroom | 2.43 m ² |

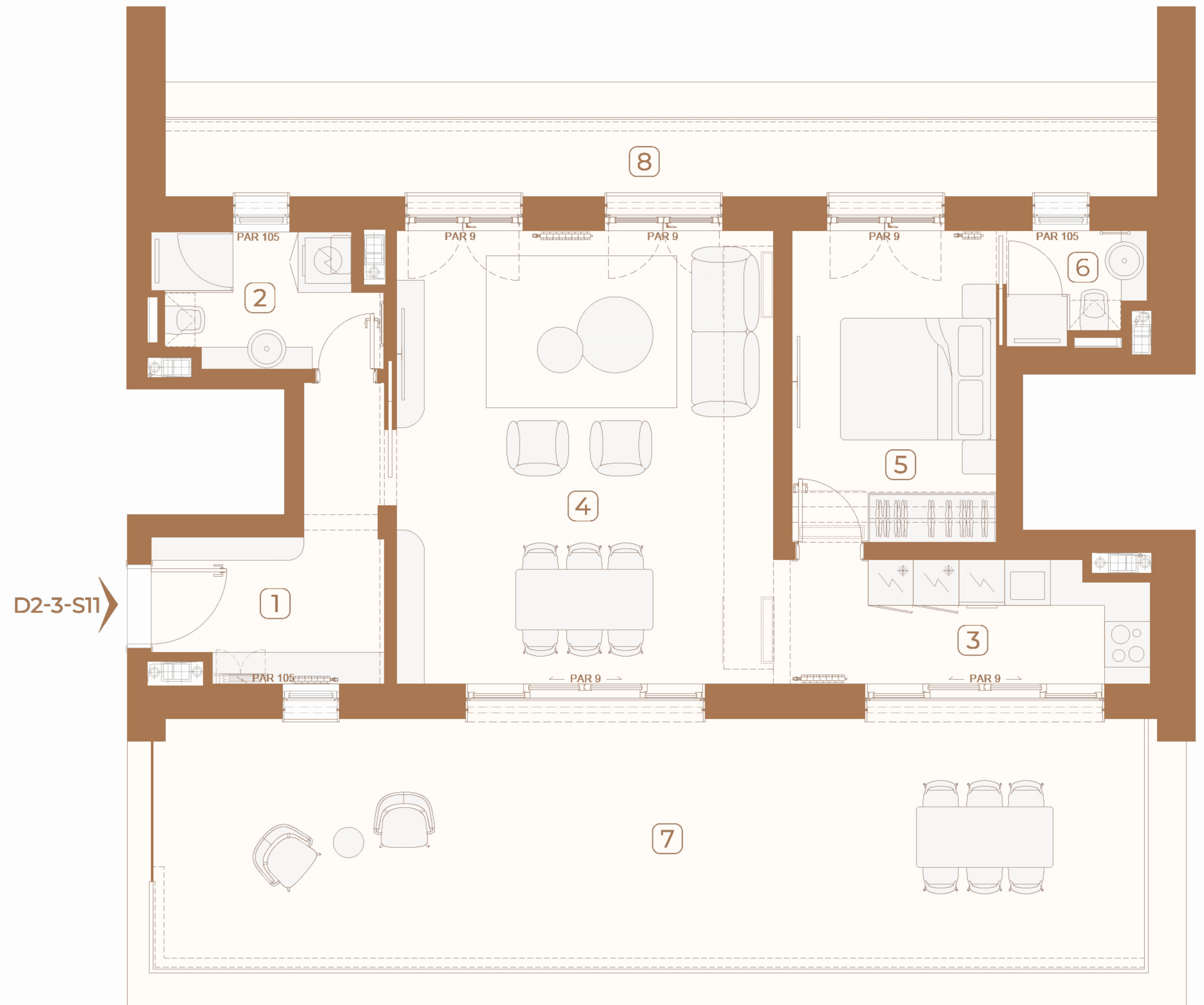
Zatvoreni prostor / Indoor area 63.30 m²

7 Terasa / Terrace 43.82 m²

8 Lođa / Loggia 13.76 m²

Otvoreni prostor / Outdoor area 57.58 m²

Površina stana / Apartment area 120.88 m²

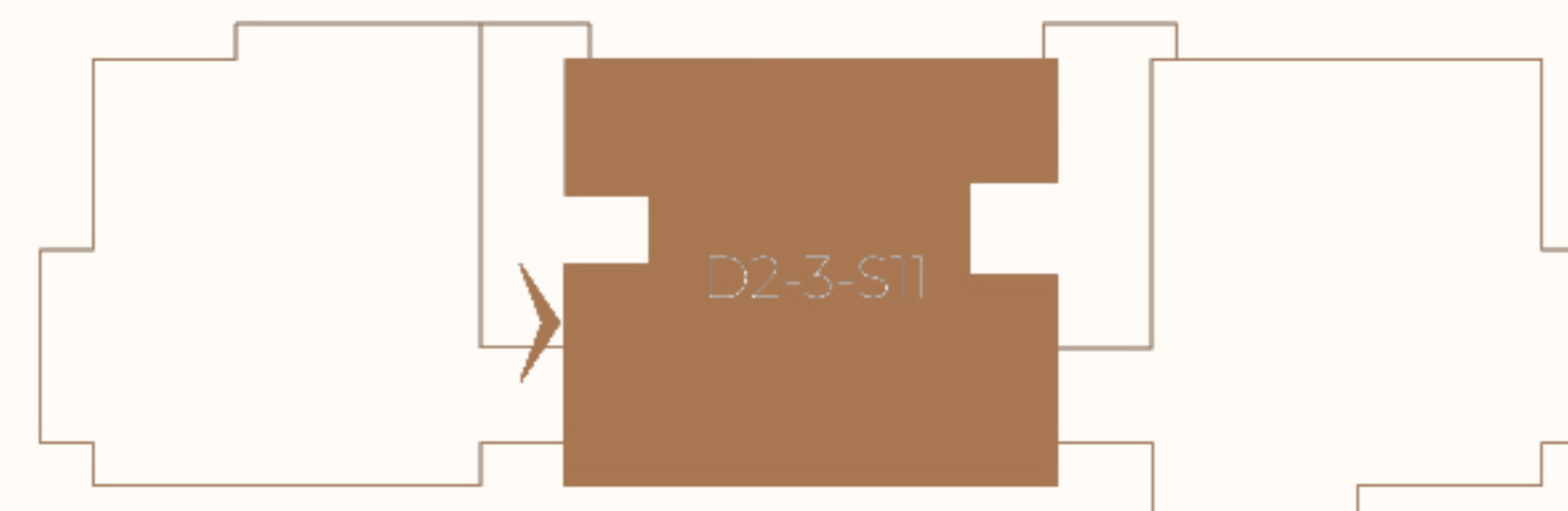
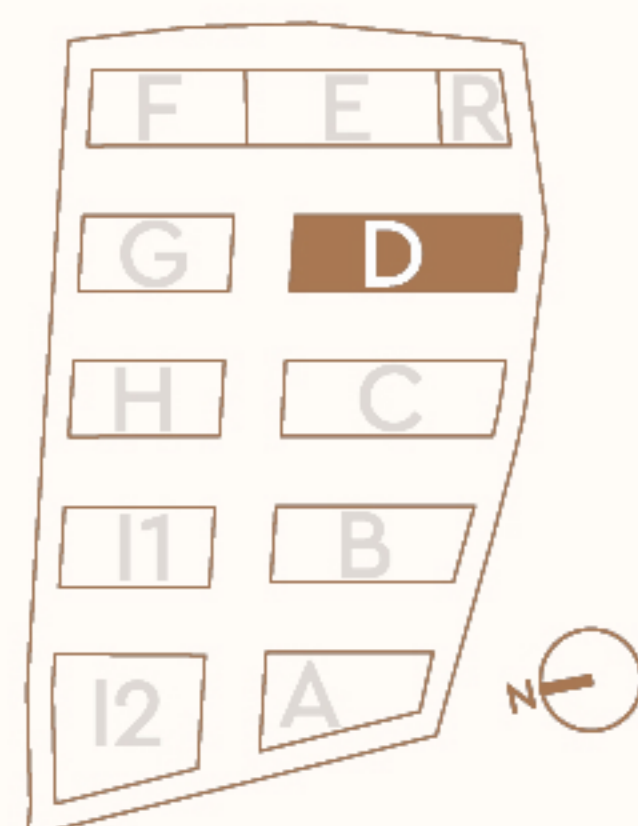


D2-3-S11

Lokacija / Location

U KOMPLEKSU / IN COMPLEX

U ZGRADI / IN BUILDING



Ovaj plan je zamišljen kao orijentacioni prikaz organizacije i veličine stana. Konačne dimenzije i detalji biće potvrđeni direktno sa agentom prodaje.

This floor plan is intended as a conceptual guide to the apartment's layout and approximate size. Final dimensions and details will be confirmed directly with the sales agent.

