



THE **KAPRILIAN** EDIT



THE EDIT
WINTER EDITION



THE EDIT | WINTER EDITION

WINTER SKY

Markets rarely reveal their intentions immediately.

They emerge through subtle shifts — longer shadows, quieter streets, a landscape that appears still whilst quietly changing beneath the surface. Winter carries this same feeling. Activity does not disappear; it simply becomes harder to interpret.

This year, that uncertainty arrives alongside a changing backdrop. New regulations, evolving expectations and ongoing policy discussions have again entered the conversation. For many, it is tempting to search for certainty within the headlines.

Yet markets rarely move in response to a single event. Sentiment often reacts first, long before outcomes become clear.

As winter settles in, something familiar occurs. The pace softens, assumptions are tested, and attention turns from noise to substance. What initially appears to be a turning point can often prove to be little more than a seasonal pause.

Every market has its rhythm. Sometimes, when visibility shortens and conviction is tested, the true direction is still quietly taking shape.

SNOWFALL

Snowfall rarely arrives all at once.

It starts with the forecast. The first flecks of sleet against the window.

Conversations shift. Assumptions form.

Before the landscape changes, sentiment often does.

Property markets have weathered no shortage of forecasts in recent years. Rising interest rates. Reform. New compliance obligations. Renewed debate surrounding capital gains tax, negative gearing and housing affordability. Each arrives carrying its own prediction of what may follow.

Some changes will matter. Others may matter less than expected.

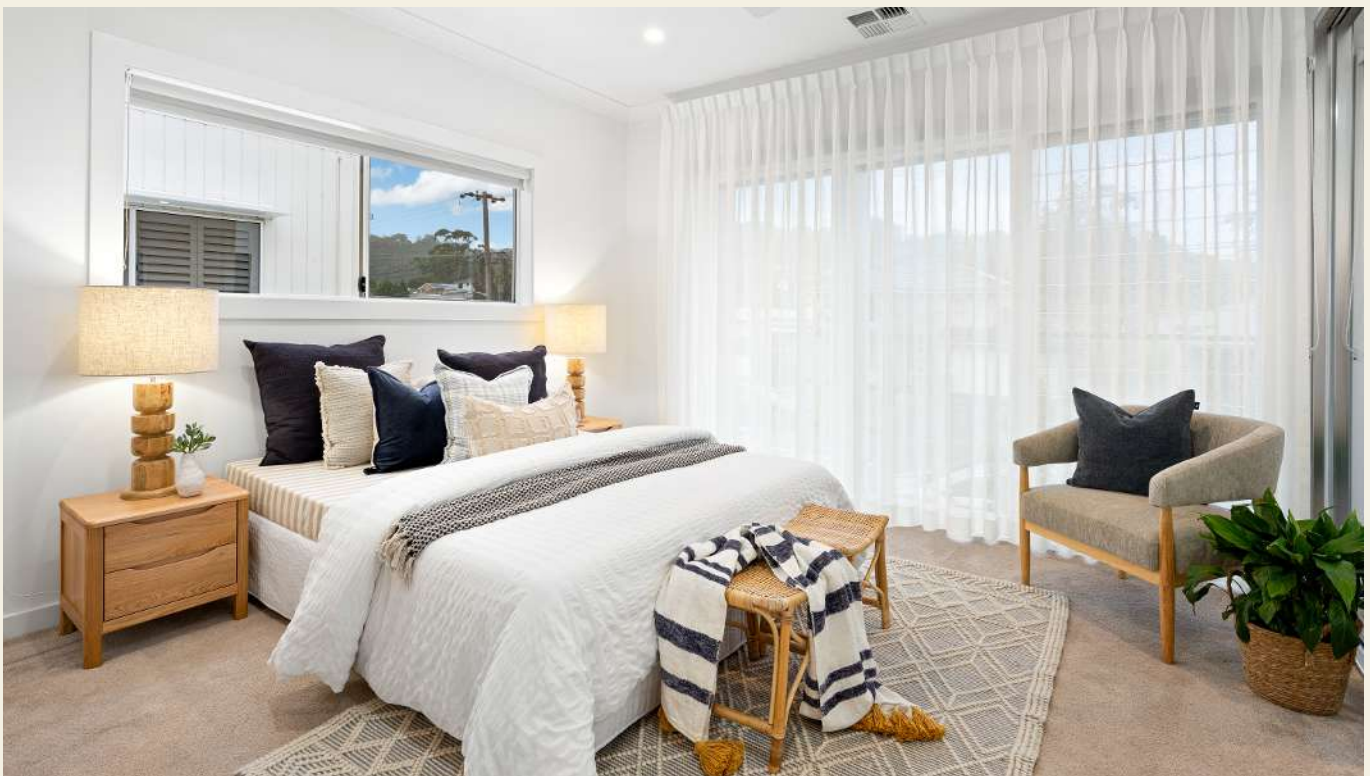
Yet history often shows that markets respond as much to perception as policy

itself. The anticipation of change can prove more powerful than the change.

Some proposals may ultimately alter behaviour less than expected. Capital gains reform may encourage longer ownership horizons, whilst debates surrounding negative gearing continue to orbit a challenge that has always sat elsewhere — the supply of homes in the locations people value most.

Perhaps this is the nature of uncertainty. Visibility shortens. Confidence becomes cautious. The storm appears larger from within than from a distance.

Time will tell which changes reshape the landscape and which simply pass through. Until then, the greatest risk may not be the policy itself, but the sentiment that forms around it.



RECENTLY SOLD



SOLD - \$1,453,000 | 4 BED 3 BATH
OFF MARKET



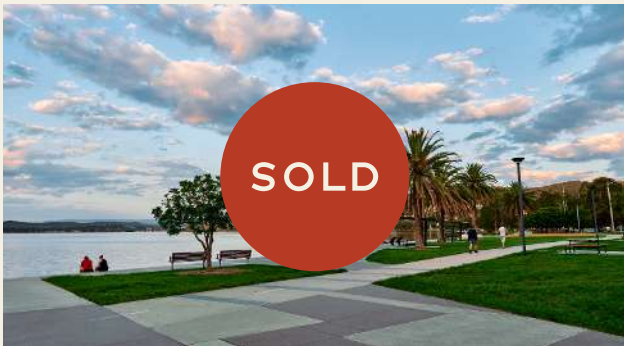
SOLD \$1,072,000 | 3 BED 2 BATH
3/2B EAST STREET, WARNERS BAY



SOLD - \$775,000 | 2 BED 2 BATH
1/50 LACHLAN ROAD, CARDIFF



SOLD - \$987,000 | 3 BED 2 BATH
91 HAMBLEDON HILL ROAD, GOWRIE



SOLD - \$1,129,000 | 4 BED 1 BATH
OFF MARKET



SOLD - \$1,130,000 | 3 BED 2 BATH
5/32 CHARLES STREET, WARNERS BAY

KIND WORDS



THE KAPRILIAN EDIT

**1/50 LACHLAN ROAD
CARDIFF**

2 BED 2 BATH 1 CAR

Selling my first property seemed like rather daunting task initially but Andrew was always available to answer my questions and concerns and provided me with actionable advice to get everything I needed prepared.

He was always polite and cheerful to deal and also negotiated a selling price that far exceeded my expectations.



THE KAPRILIAN EDIT

**26 PALISADE STREET
EDGEWORTH**

4 BED 2 BATH 2 CAR

Andrew has been so easy to deal with, his communication has been clear, professional and supportive

The presentation of our house was amazing and captured everything about our beautiful home.

SILHOUETTE OF TIME

Time has a way of revealing patterns that are difficult to see in the moment.

Markets often feel defined by the events closest to them. Policy shifts, lending conditions, economic uncertainty and changing sentiment can all appear larger when viewed from within the cycle itself. Yet distance has a habit of changing perspective.

Throughout history, some of the market's most significant turning points have

emerged from periods much like these. Credit tightens. Conditions become more measured. Governments intervene. Behaviour adapts.

Then, gradually, a new landscape begins to form.

The details may change, but the rhythm is familiar. Markets rarely move in a straight line. They respond to the conditions around them, and in doing so, often begin laying the foundations for the cycle that follows.



SUMMARY

THE QUIET HORIZON

The horizon is rarely clearest in the middle of winter.

Visibility shortens. Attention narrows. The landscape feels defined by the conditions immediately ahead. Yet time has a habit of revealing possibilities that are difficult to see in the moment.

Recent months have brought no shortage of change. Interest rates, regulation, compliance and policy have all found their place in the conversation. Much of the focus has centered on what these developments may restrict, slow or reshape.

Yet markets have always adapted.

Property has weathered countless debates before. Interest rates rise and fall, lending conditions tighten and ease, yet the underlying reasons people buy, sell and move

remain remarkably consistent.

Good properties continue to find their audience. Scarcity remains a powerful force. Quality, location and thoughtful presentation still carry weight regardless of the season.

Perhaps this is the perspective only distance provides. The forces creating uncertainty today may ultimately influence the conditions that follow. Debate will continue. Policies will evolve. New battlegrounds will emerge.

The future remains unwritten.

But history suggests that periods of adjustment are rarely the end of the story. More often, they become the beginning of the next chapter.

Where Better Begins.

Continue the Conversation

Every home enters the market differently. The way it is positioned can shape what follows.

If you're considering a move, whether soon or simply exploring what's possible, a conversation is often where clarity begins.

Andrew K

The Kaprilian Edit





ANDREW KAPRILIAN
0431 427 993

ANDREWK@KAPRILIANEDIT.COM.AU