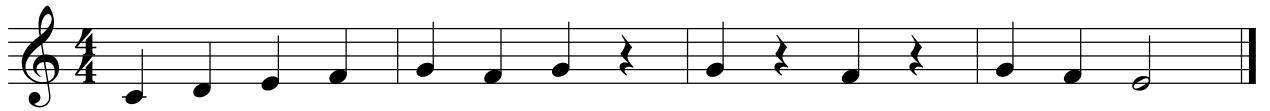


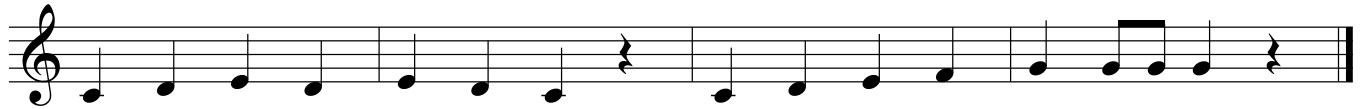
Sight Singing Practice

Level 1 in C Major

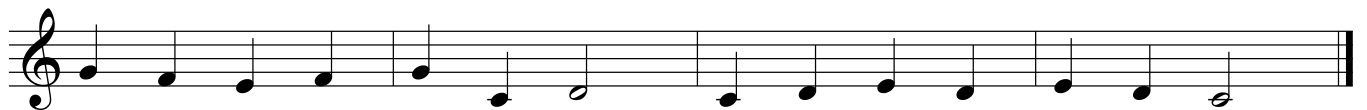
1



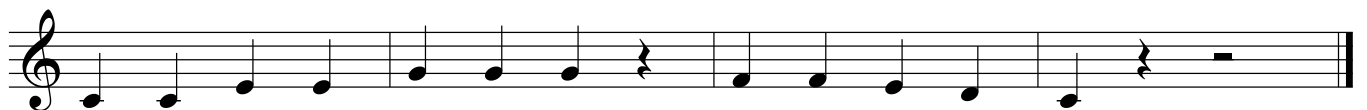
2



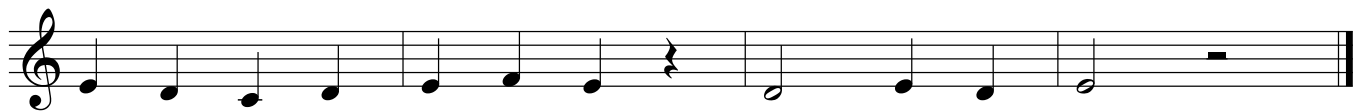
3



4



5



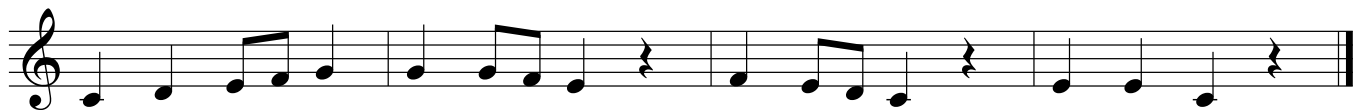
6



7



8



Sight Singing Practice

9

Exercise 9: Two staves of music in 3/4 time. The first staff contains a half note on G4, followed by quarter notes on A4, B4, C5, B4, A4, and G4. The second staff contains quarter notes on F4, E4, D4, C4, B3, A3, G3, and F3, ending with a half note on E3.

10

Exercise 10: Two staves of music in 3/4 time. The first staff contains eighth notes on G4, A4, B4, C5, B4, A4, G4, and F4. The second staff contains quarter notes on E4, D4, C4, B3, A3, G3, F3, and E3, ending with a half note on D3.

11

Exercise 11: Two staves of music in 4/4 time. The first staff contains quarter notes on G4, A4, B4, C5, B4, A4, G4, and F4. The second staff contains quarter notes on E4, D4, C4, B3, A3, G3, F3, and E3, ending with a half note on D3.

12

Exercise 12: Two staves of music in 3/4 time. The first staff contains eighth notes on G4, A4, B4, C5, B4, A4, G4, and F4. The second staff contains quarter notes on E4, D4, C4, B3, A3, G3, F3, and E3, ending with a half note on D3.

13

Exercise 13: Two staves of music in 3/4 time. The first staff contains eighth notes on G4, A4, B4, C5, B4, A4, G4, and F4. The second staff contains quarter notes on E4, D4, C4, B3, A3, G3, F3, and E3, ending with a half note on D3.

14

Exercise 14: Two staves of music in 3/4 time. The first staff contains eighth notes on G4, A4, B4, C5, B4, A4, G4, and F4. The second staff contains quarter notes on E4, D4, C4, B3, A3, G3, F3, and E3, ending with a half note on D3.