

P.O./CAS WINDOW

FIXED/CAS WINDOW

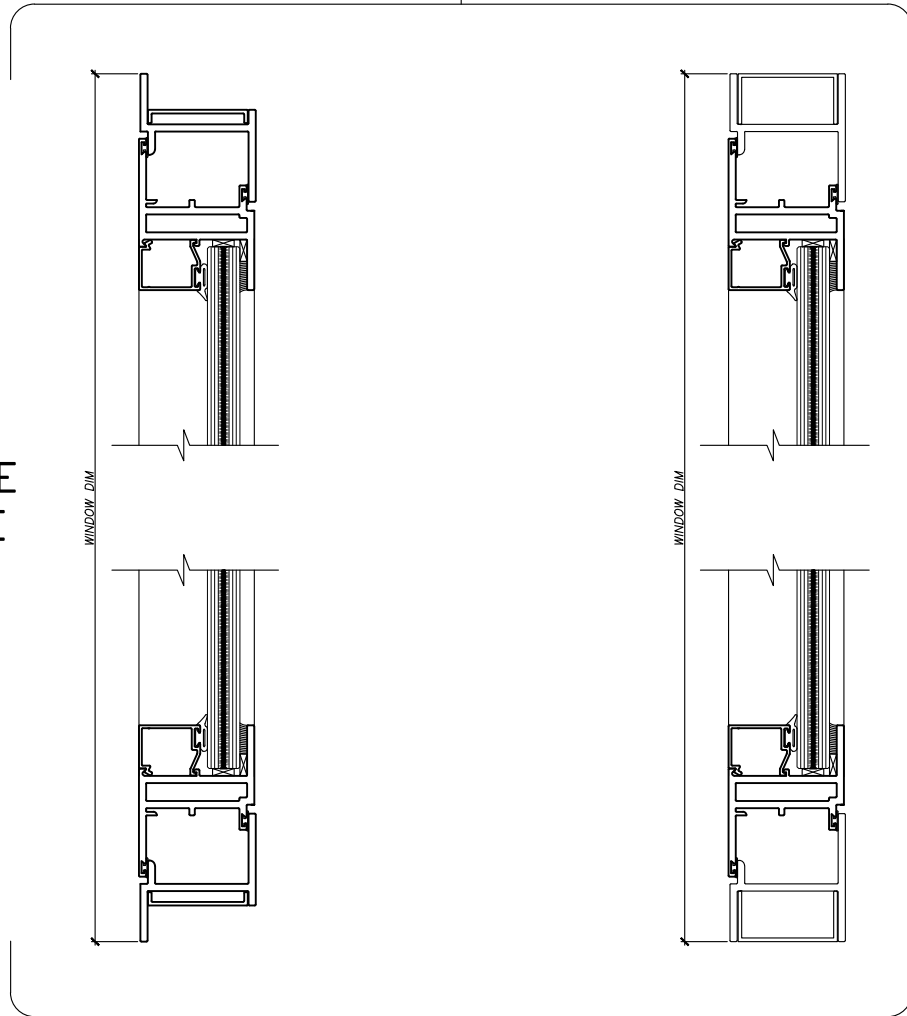
SERIES: 3000  
ALUMINUM IMPACT CASEMENT WINDOWS

GLAZING: 9/16" LAMINATED  
IMPACT GLASS

SOL-A-TROL  
aluminum products  
4101 N.W. 132nd Street  
Miami, Florida 33054  
Phone: (305) 681-2020  
Fax: (305) 681-2035

1

FLANGE  
FRAME

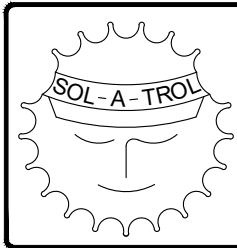


EQUAL  
LEG  
FRAME

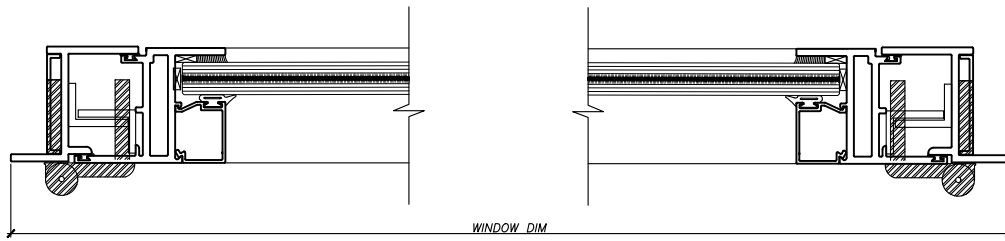
2

SERIES: 3000  
ALUMINUM IMPACT CASEMENT WINDOWS

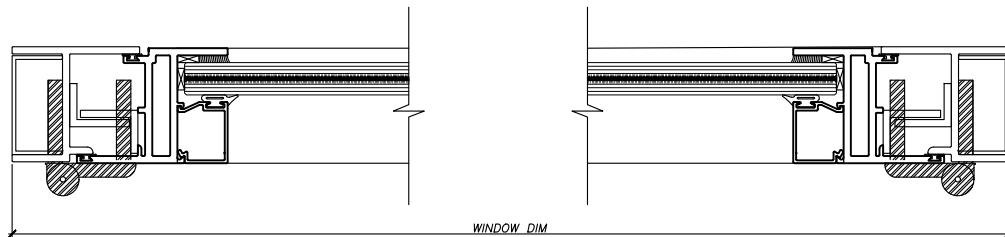
GLAZING:  $\frac{9}{16}$ " LAMINATED  
IMPACT GLASS



SOL-A-TROL  
aluminum products  
4101 N.W. 132nd Street  
Miami, Florida 33054  
Phone: (305) 681-2020  
Fax: (305) 681-2035



FLANGE  
FRAME



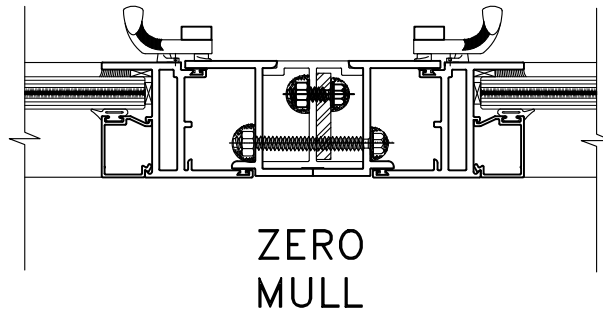
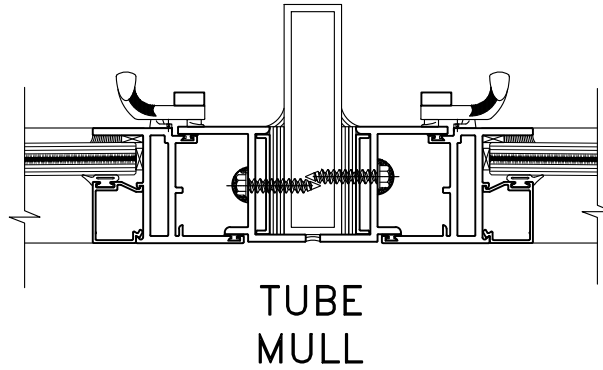
EQUAL  
LEG  
FRAME

SERIES: 3000  
ALUMINUM IMPACT CASEMENT WINDOWS

GLAZING:  $\frac{9}{16}$ " LAMINATED  
IMPACT GLASS

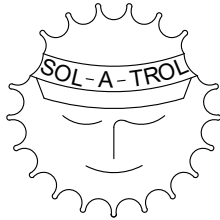


5



SERIES: 3000  
ALUMINUM IMPACT CASEMENT WINDOWS

GLAZING:  $\frac{9}{16}$ " LAMINATED  
IMPACT GLASS

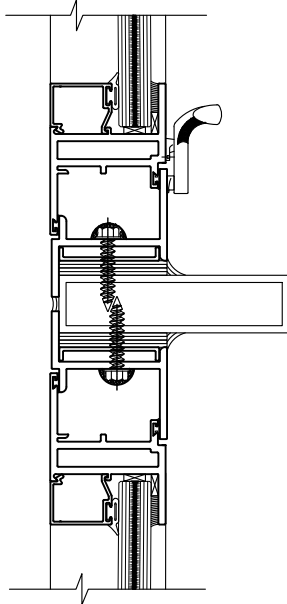


SOL-A-TROL

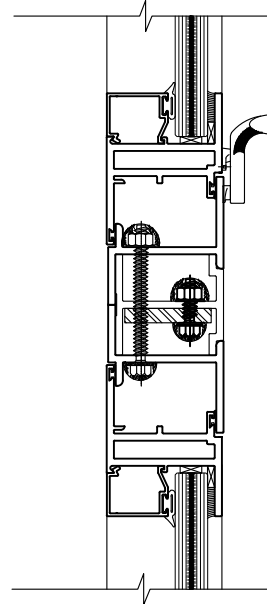
aluminum products  
4101 N.W. 132nd Street  
Miami, Florida 33054  
Phone: (305) 681-2020  
Fax: (305) 681-2035

6

TUBE  
MULL

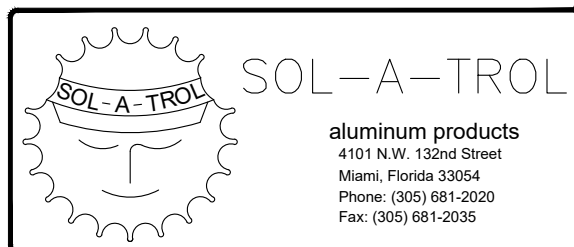


ZERO  
MULL

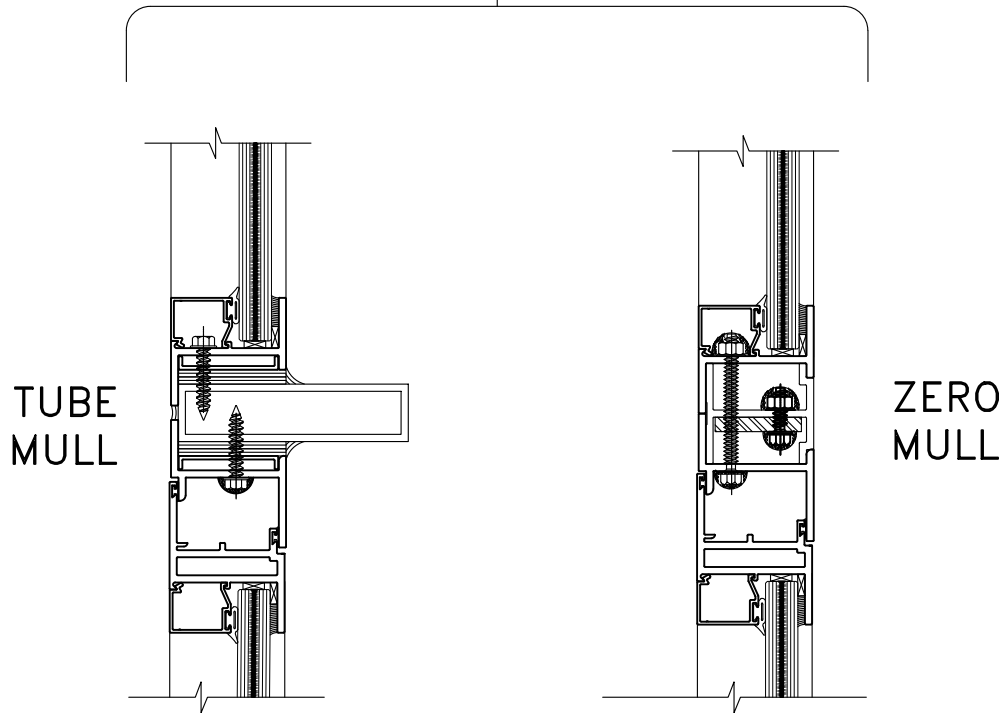


SERIES: 3000  
ALUMINUM IMPACT CASEMENT WINDOWS

GLAZING:  $\frac{9}{16}$ " LAMINATED  
IMPACT GLASS

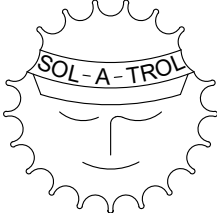


7



SERIES: 3000  
ALUMINUM IMPACT CASEMENT WINDOWS

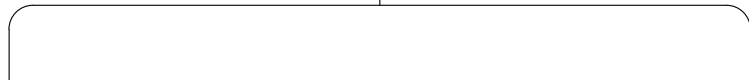
GLAZING:  $\frac{9}{16}$ " LAMINATED  
IMPACT GLASS



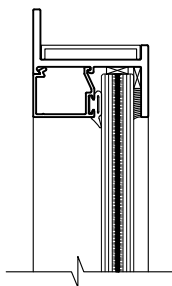
SOL-A-TROL

aluminum products  
4101 N.W. 132nd Street  
Miami, Florida 33054  
Phone: (305) 681-2020  
Fax: (305) 681-2035

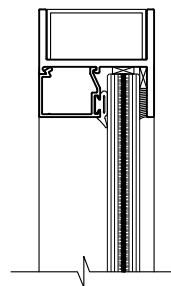
8



FLANGE  
FRAME

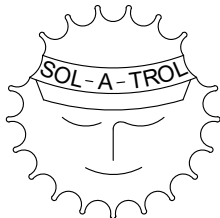


EQUAL  
LEG  
FRAME



SERIES: 3000  
ALUMINUM IMPACT CASEMENT WINDOWS

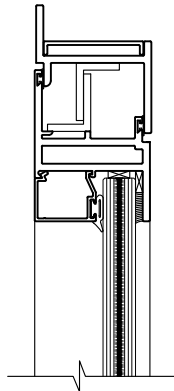
GLAZING:  $\frac{9}{16}$ " LAMINATED  
IMPACT GLASS



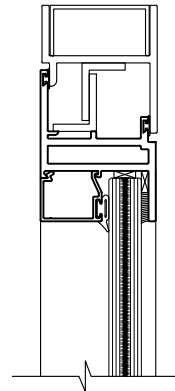
SOL-A-TROL  
aluminum products  
4101 N.W. 132nd Street  
Miami, Florida 33054  
Phone: (305) 681-2020  
Fax: (305) 681-2035

9

FLANGE  
FRAME



EQUAL  
LEG  
FRAME



SERIES: 3000  
ALUMINUM IMPACT CASEMENT WINDOWS

GLAZING:  $\frac{9}{16}$ " LAMINATED  
IMPACT GLASS

