

P.O./CAS WINDOW

FIXED/CAS WINDOW

SERIES: 3000
ALUMINUM IMPACT CASEMENT WINDOWS

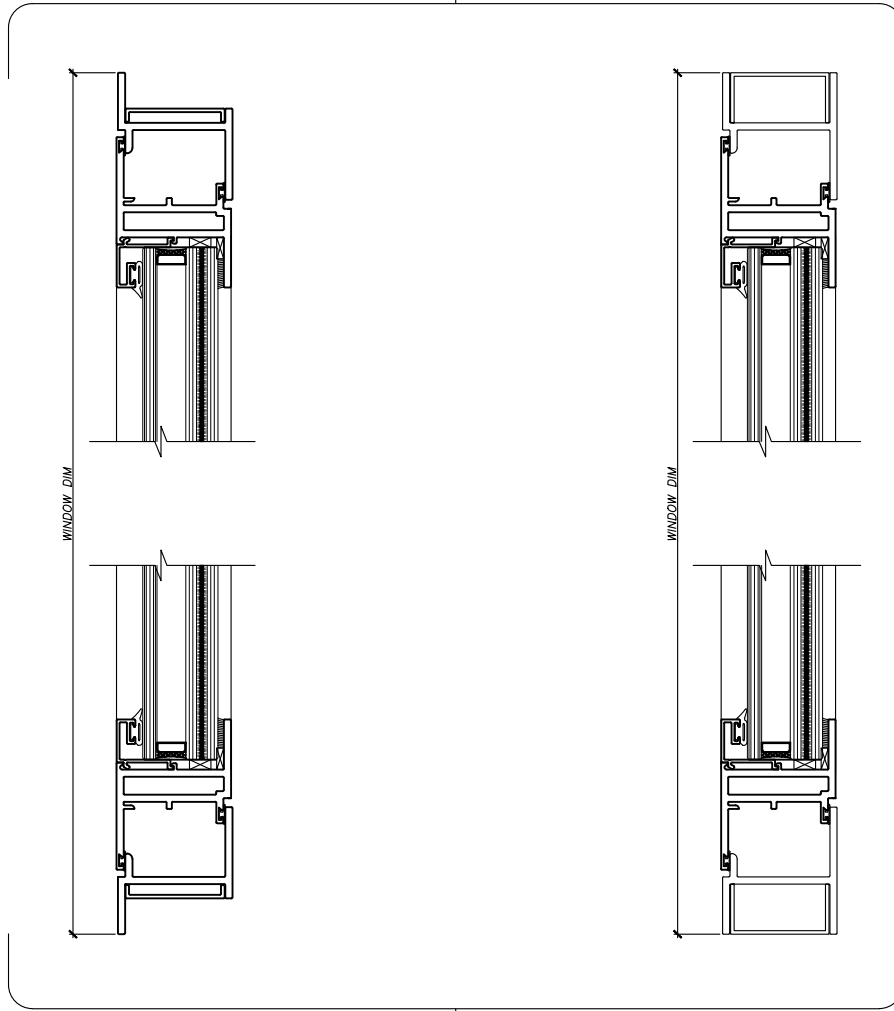
GLAZING: 1⁵/₁₆" LAMINATED
INSULATED IMPACT GLASS

SOL-A-TROL

aluminum products
4101 N.W. 132nd Street
Miami, Florida 33054
Phone: (305) 681-2020
Fax: (305) 681-2035

1

FLANGE
FRAME

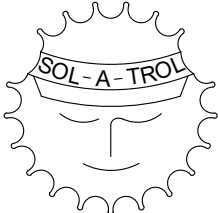


EQUAL
LEG
FRAME

2

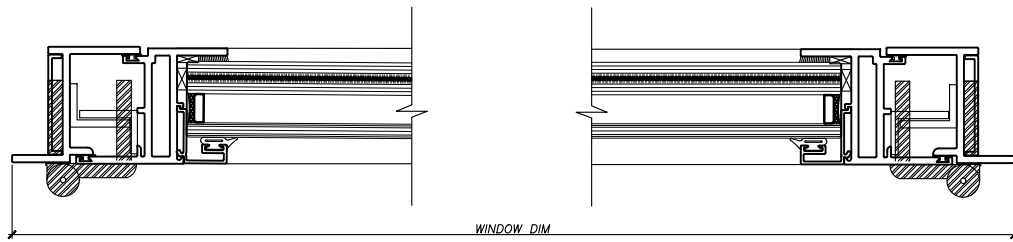
SERIES: 3000
ALUMINUM IMPACT CASEMENT WINDOWS

GLAZING: 1⁵/₁₆" LAMINATED
INSULATED IMPACT GLASS

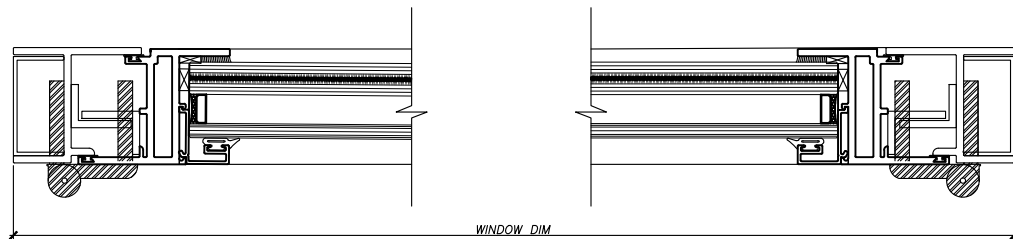


SOL-A-TROL

aluminum products
4101 N.W. 132nd Street
Miami, Florida 33054
Phone: (305) 681-2020
Fax: (305) 681-2035



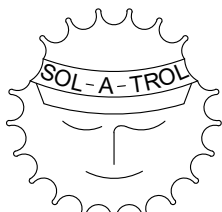
FLANGE
FRAME



EQUAL
LEG
FRAME

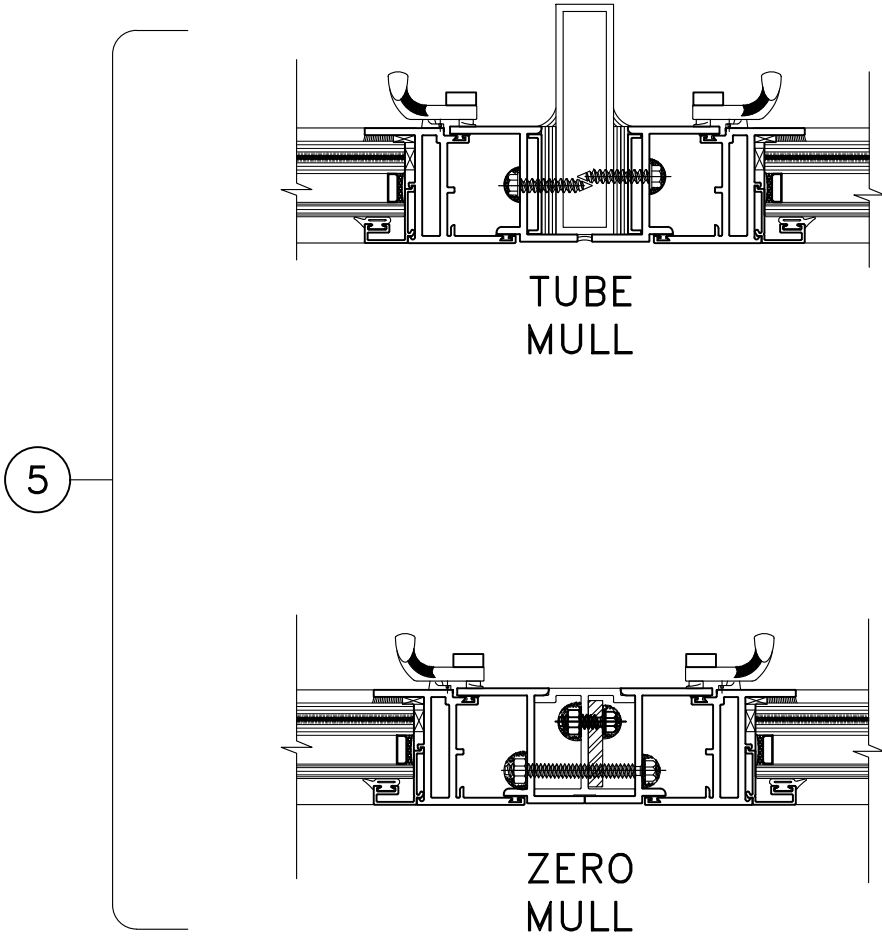
SERIES: 3000
ALUMINUM IMPACT CASEMENT WINDOWS

GLAZING: 1 $\frac{5}{16}$ " LAMINATED
INSULATED IMPACT GLASS



SOL-A-TROL

aluminum products
4101 N.W. 132nd Street
Miami, Florida 33054
Phone: (305) 681-2020
Fax: (305) 681-2035



SERIES: 3000
 ALUMINUM IMPACT CASEMENT WINDOWS

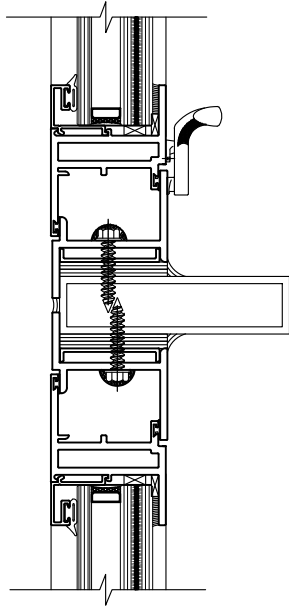
GLAZING: 1⁵/₁₆" LAMINATED
 INSULATED IMPACT GLASS

SOL-A-TROL

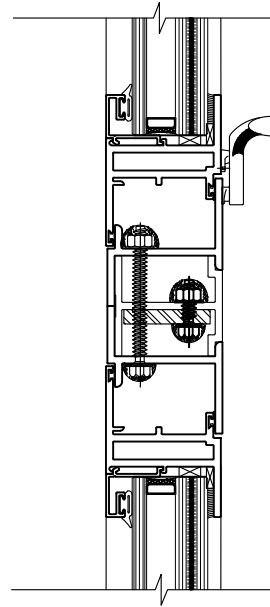
aluminum products
 4101 N.W. 132nd Street
 Miami, Florida 33054
 Phone: (305) 681-2020
 Fax: (305) 681-2035

6

TUBE
MULL

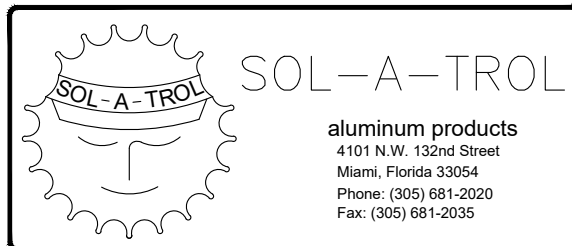


ZERO
MULL

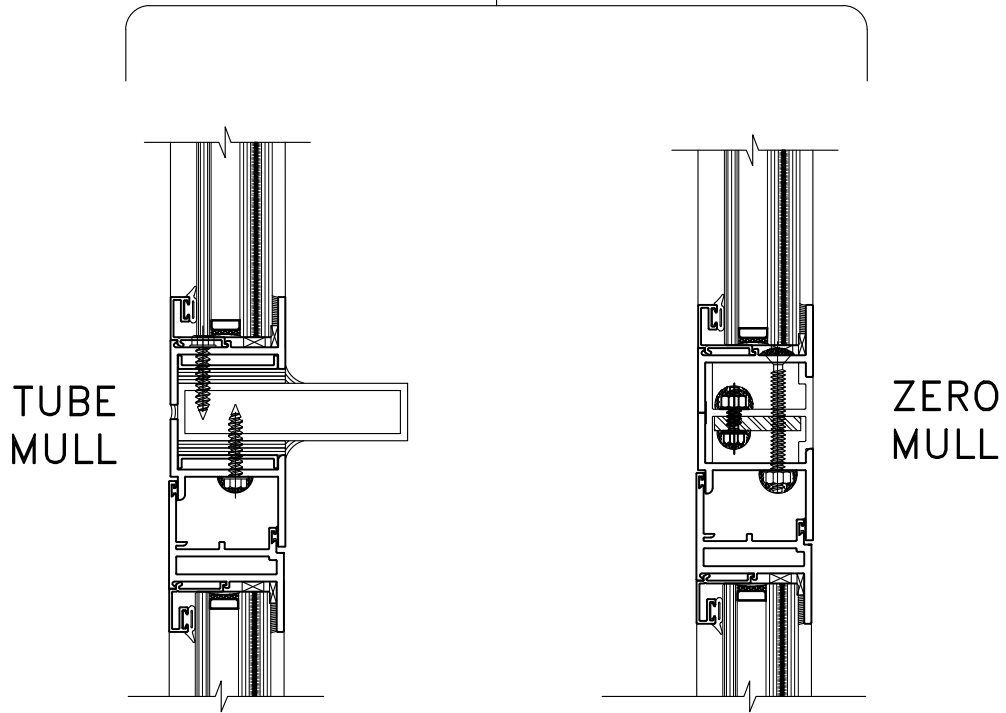


SERIES: 3000
ALUMINUM IMPACT CASEMENT WINDOWS

GLAZING: 1⁵/₁₆" LAMINATED
INSULATED IMPACT GLASS

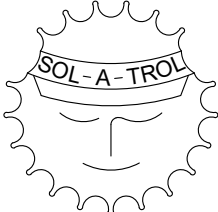


7



SERIES: 3000
ALUMINUM IMPACT CASEMENT WINDOWS

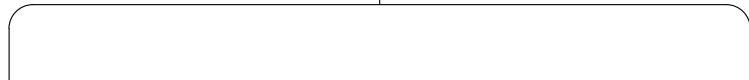
GLAZING: 1⁵/₁₆" LAMINATED
INSULATED IMPACT GLASS



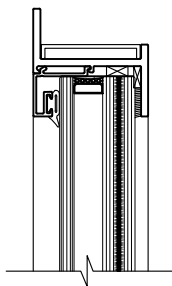
SOL-A-TROL

aluminum products
4101 N.W. 132nd Street
Miami, Florida 33054
Phone: (305) 681-2020
Fax: (305) 681-2035

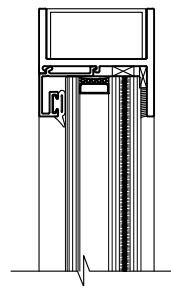
8



FLANGE
FRAME



EQUAL
LEG
FRAME



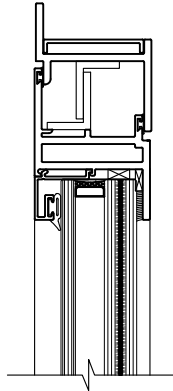
SERIES: 3000
ALUMINUM IMPACT CASEMENT WINDOWS

GLAZING: 1⁵/₁₆" LAMINATED
INSULATED IMPACT GLASS

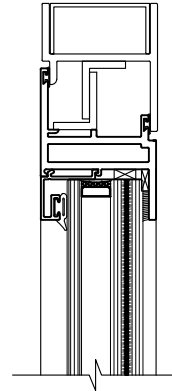


9

FLANGE
FRAME



EQUAL
LEG
FRAME



SERIES: 3000
ALUMINUM IMPACT CASEMENT WINDOWS

GLAZING: 1 $\frac{5}{16}$ " LAMINATED
INSULATED IMPACT GLASS

