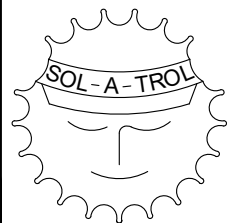


P.O./CAS WINDOW

FIXED/CAS WINDOW

SERIES: 3062  
ALUMINUM IMPACT CASEMENT WINDOWS

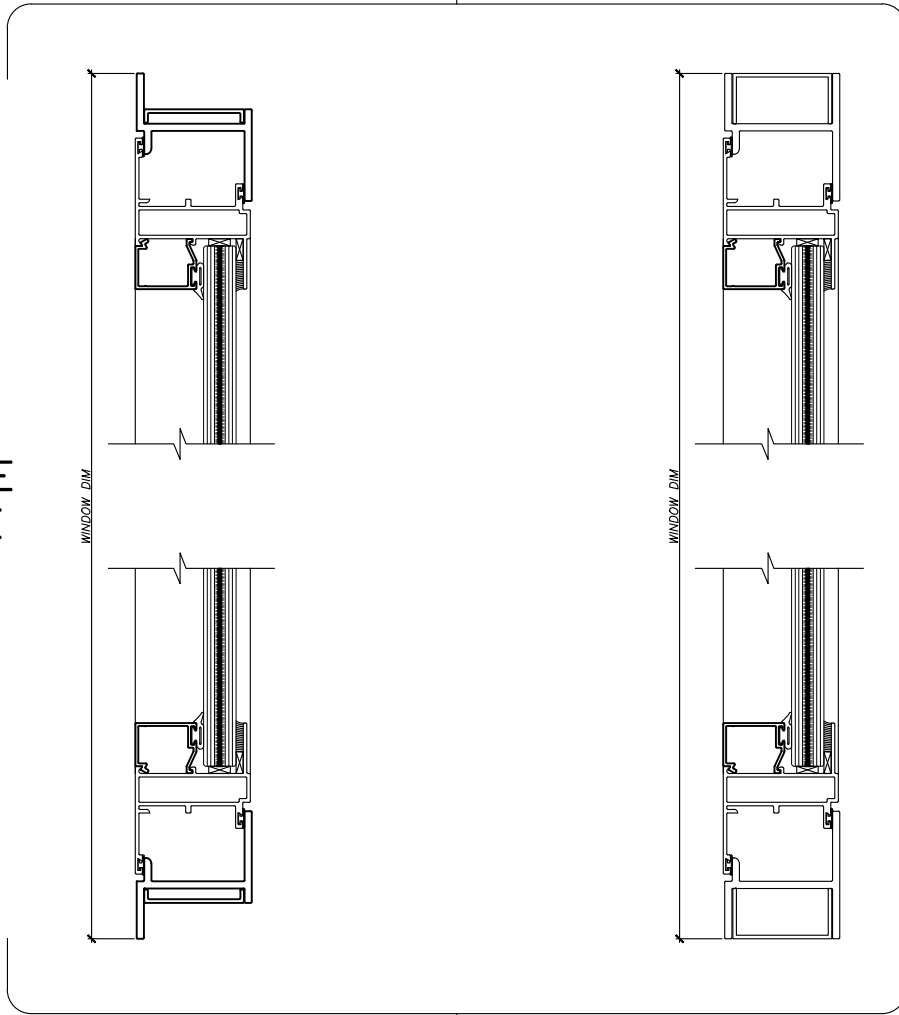
GLAZING: 9/16" LAMINATED IMPACT GLASS



SOL-A-TROL  
aluminum products  
4101 N.W. 132nd Street  
Miami, Florida 33054  
Phone: (305) 681-2020  
Fax: (305) 681-2035

1

FLANGE  
FRAME

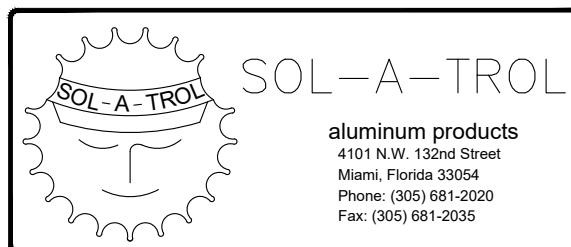


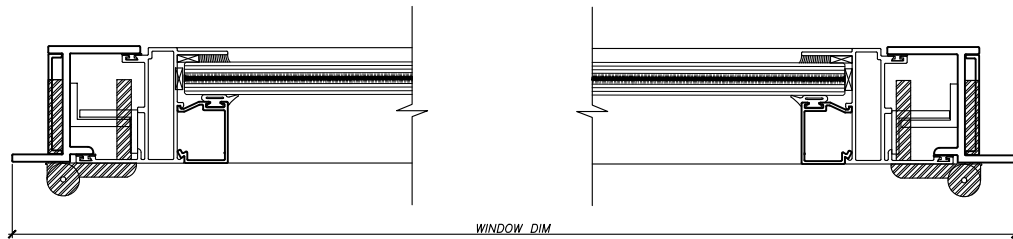
EQUAL  
LEG  
FRAME

2

SERIES: 3062  
ALUMINUM IMPACT CASEMENT WINDOWS

GLAZING:  $\frac{9}{16}$ " LAMINATED  
IMPACT GLASS

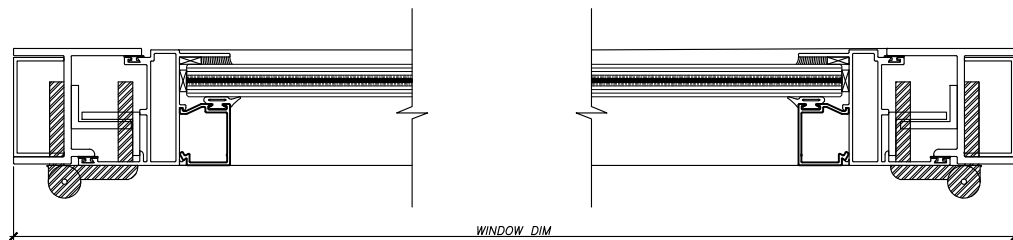




FLANGE  
FRAME

3

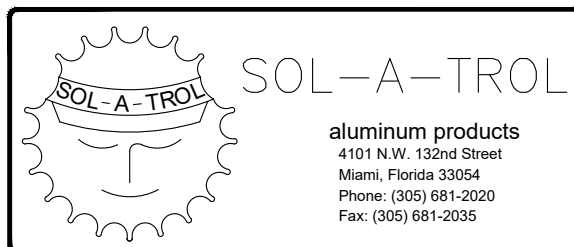
4



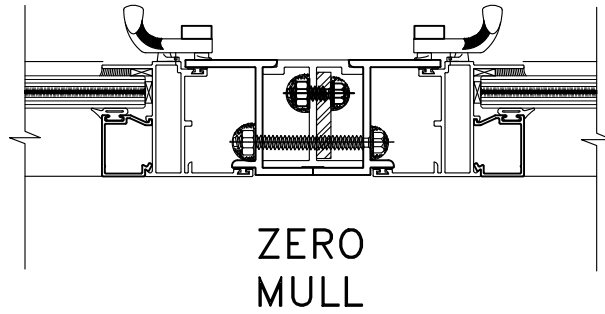
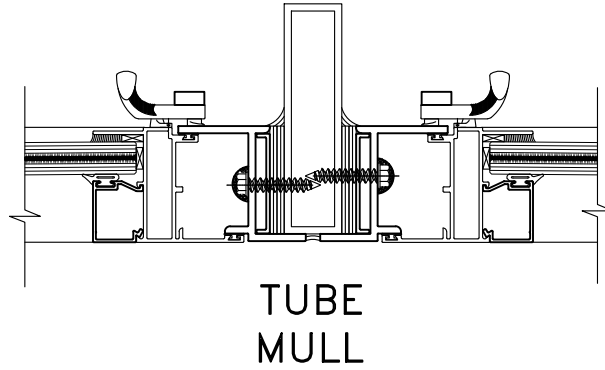
EQUAL  
LEG  
FRAME

SERIES: 3062  
ALUMINUM IMPACT CASEMENT WINDOWS

GLAZING:  $\frac{9}{16}$ " LAMINATED  
IMPACT GLASS

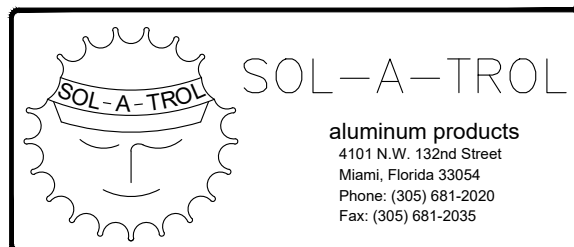


5



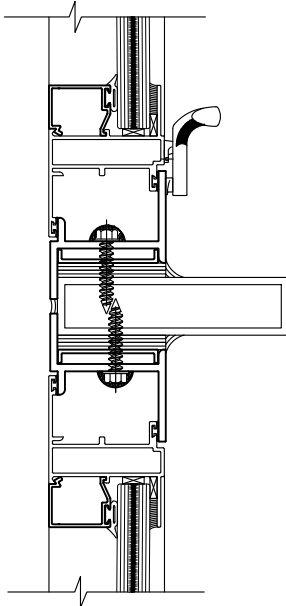
SERIES: 3062  
ALUMINUM IMPACT CASEMENT WINDOWS

GLAZING:  $\frac{9}{16}$ " LAMINATED  
IMPACT GLASS

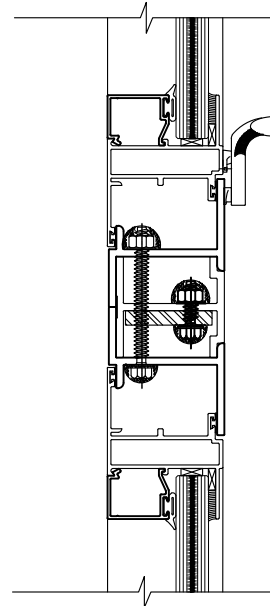


6

TUBE  
MULL

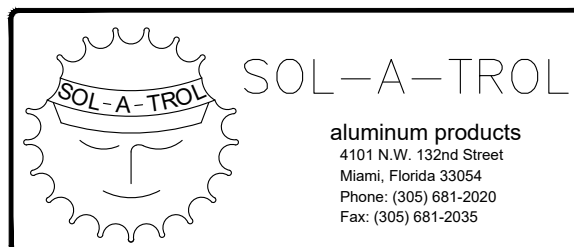


ZERO  
MULL

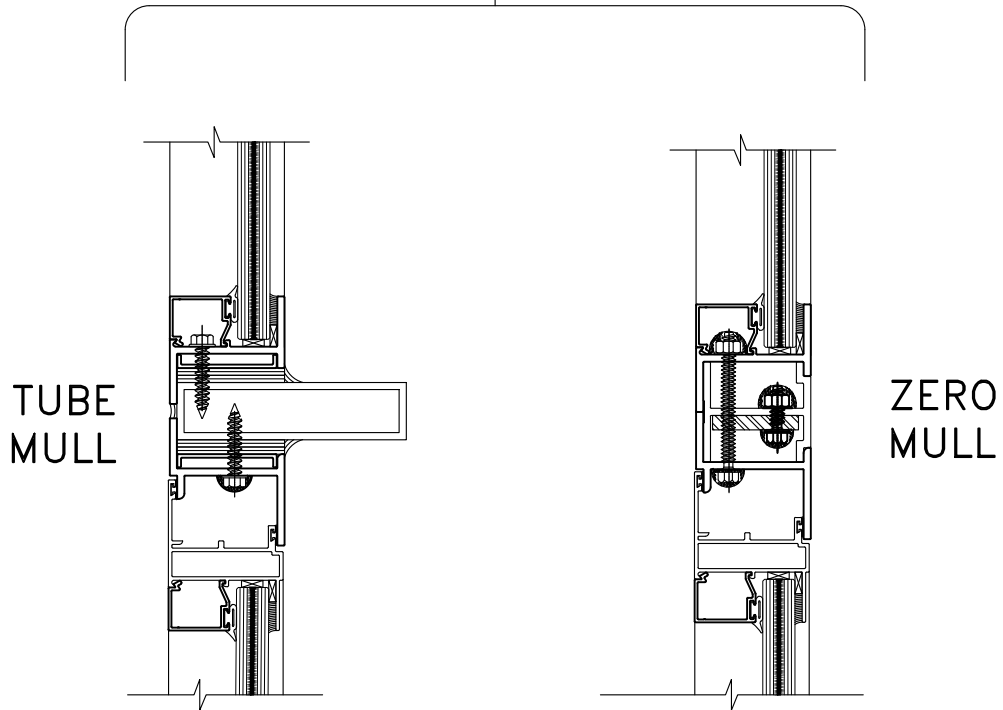


SERIES: 3062  
ALUMINUM IMPACT CASEMENT WINDOWS

GLAZING:  $\frac{9}{16}$ " LAMINATED  
IMPACT GLASS

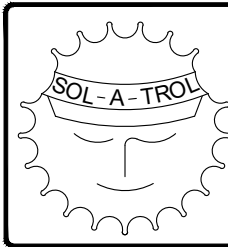


7



SERIES: 3062  
ALUMINUM IMPACT CASEMENT WINDOWS

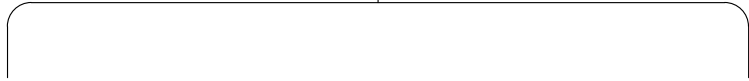
GLAZING:  $\frac{9}{16}$ " LAMINATED  
IMPACT GLASS



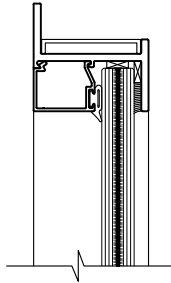
SOL-A-TROL

aluminum products  
4101 N.W. 132nd Street  
Miami, Florida 33054  
Phone: (305) 681-2020  
Fax: (305) 681-2035

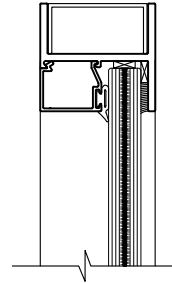
8



FLANGE  
FRAME

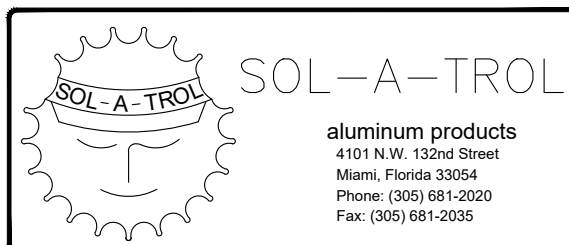


EQUAL  
LEG  
FRAME



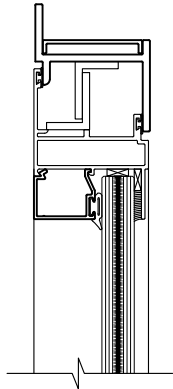
SERIES: 3062  
ALUMINUM IMPACT CASEMENT WINDOWS

GLAZING:  $\frac{9}{16}$ " LAMINATED  
IMPACT GLASS

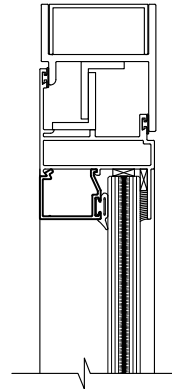


9

FLANGE  
FRAME



EQUAL  
LEG  
FRAME



SERIES: 3062  
ALUMINUM IMPACT CASEMENT WINDOWS

GLAZING:  $\frac{9}{16}$ " LAMINATED  
IMPACT GLASS

