



Product Approval
USER: Public User

[Product Approval Menu](#) > [Product or Application Search](#) > [Application List](#) > **Application Detail**

OFFICE OF THE
SECRETARY

FL #	FL17762-R5								
Application Type	Revision								
Code Version	2023								
Application Status	Approved								
Comments									
Archived	<input type="checkbox"/>								
Product Manufacturer	Sol-A-Trol Aluminum Products								
Address/Phone/Email	4101 NW 132 St Miami, FL 33054 (350) 681-2020 Ext 209 Edith@SOLATROL.COM								
Authorized Signature	Edith Todzey Edith@SOLATROL.COM								
Technical Representative	Edith Todzey								
Address/Phone/Email	4101 NW 132nd St. Miami, FL 33054 (305) 681-2020 edith@solatrol.com								
Quality Assurance Representative									
Address/Phone/Email									
Category	Windows								
Subcategory	Fixed								
Compliance Method	Evaluation Report from a Florida Registered Architect or a Licensed Florida Professional Engineer <input type="checkbox"/> Evaluation Report - Hardcopy Received								
Florida Engineer or Architect Name who developed the Evaluation Report	Jalal Farooq								
Florida License	PE-81223								
Quality Assurance Entity	National Accreditation and Management Institute								
Quality Assurance Contract Expiration Date	12/31/2026								
Validated By	Yiping Wang, P.E. <input checked="" type="checkbox"/> Validation Checklist - Hardcopy Received								
Certificate of Independence	FL17762_R5_COI_SS - Certificate of Independence 2023.pdf								
Referenced Standard and Year (of Standard)	<table border="0"> <thead> <tr> <th>Standard</th> <th>Year</th> </tr> </thead> <tbody> <tr> <td>TAS 201</td> <td>1994</td> </tr> <tr> <td>TAS 202</td> <td>1994</td> </tr> <tr> <td>TAS 203</td> <td>1994</td> </tr> </tbody> </table>	Standard	Year	TAS 201	1994	TAS 202	1994	TAS 203	1994
Standard	Year								
TAS 201	1994								
TAS 202	1994								
TAS 203	1994								
Equivalence of Product Standards Certified By									
Sections from the Code									

Product Approval Method

Method 1 Option D

Date Submitted

12/12/2024

Date Validated

12/19/2024

Date Pending FBC Approval

12/21/2024

Date Approved

02/11/2025

Summary of Products

FL #	Model, Number or Name	Description
17762.1	Series 3000/3062 Aluminum Fixed Window	Large missile impact resistant aluminum fixed window.
Limits of Use Approved for use in HVHZ: Yes Approved for use outside HVHZ: Yes Impact Resistant: Yes Design Pressure: +100/-110 Other: See drawing W15-19 for span vs load combinations and installation details.		Installation Instructions FL17762_R5_II_SS - 3000-3062 FW (LMI)-DWG W15-19 2023 R1.pdf Verified By: Jalal Farooq PE 81223 Created by Independent Third Party: Yes Evaluation Reports FL17762_R5_AE_SS - 3000-3062 FW (LMI)-PAE 2023 R1.pdf Created by Independent Third Party: Yes

[Back](#)

[Next](#)

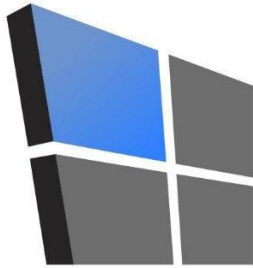
[Contact Us](#) :: [2601 Blair Stone Road, Tallahassee FL 32399](#) Phone: 850-487-1824

The State of Florida is an AA/EEO employer. [Copyright 2007-2013 State of Florida.](#) :: [Privacy Statement](#) :: [Accessibility Statement](#) :: [Refund Statement](#)

Under Florida law, email addresses are public records. If you do not want your e-mail address released in response to a public-records request, do not send electronic mail to this entity. Instead, contact the office by phone or by traditional mail. If you have any questions, please contact 850.487.1395. *Pursuant to Section 455.275(1), Florida Statutes, effective October 1, 2012, licensees licensed under Chapter 455, F.S. must provide the Department with an email address if they have one. The emails provided may be used for official communication with the licensee. However email addresses are public record. If you do not wish to supply a personal address, please provide the Department with an email address which can be made available to the public. To determine if you are a licensee under Chapter 455, F.S., please click [here](#).

Product Approval Accepts:





AL-FAROOQ CORPORATION

CONSULTING ENGINEERS & PRODUCT DEVELOPMENT

**PRODUCT APPROVAL EVALUATION
RULE CHAPTER #61G20-3 • METHOD 1 OPTION D**

**FL 17762
Date: 11/14/2024**

Detailed Product Description:

Manufacturer: SOL-A-TROL ALUMINUM PRODUCTS, INC.

Manufacturer Address: 4101 NW 132ND STREET – MIAMI, FL. 33054

Model Name: 3000/3062 ALUMINUM FIXED WINDOW

Maximum Load: +100 PSF, -100 PSF (Large Missile Impact)

Installation Drawings # W15-19

This product complies with the High Velocity Hurricane Zone (HVHZ) testing requirements.							
For maximum sizes, combination of span vs loads and anchor type refer to installation drawings.							
Comparative analysis used <input checked="" type="checkbox"/> Yes <input type="checkbox"/> No							
Mandatory Tests (Tested in accordance with AAMA 101/I.S.2/NAFS-02/TAS-202)							
TEST	DESCRIPTION	TEST LOCATION	TEST REPORT DATE	TEST REPORT #	Test Sealed by		
ASTM E283	Air Infiltration Leakage	Hurricane Engineering & Testing, Inc.	10/28/2004	HETI-04-1410	Ivonne Ghia, P.E.		
			10/28/2004	HETI-04-1409	Ivonne Ghia, P.E.		
			2/20/2008	HETI-07-4389	Candido Font, P.E.		
			2/20/2008	HETI-07-4388	Candido Font, P.E.		
			7/25/2008	HETI-08-2081	Candido Font, P.E.		
			7/25/2008	HETI-08-2153A	Candido Font, P.E.		
			7/25/2008	HETI-08-2089A	Candido Font, P.E.		
			11/10/2008	HETI-08-2205A	Candido Font, P.E.		
				QAI Laboratories	5/31/2024	MED-1094	Idalmis Ortega, P.E.
		ASTM E331 OR ASTM 547 & TAS 202	Water Penetration	Hurricane Engineering & Testing, Inc.	10/28/2004	HETI-04-1410	Ivonne Ghia, P.E.
10/28/2004	HETI-04-1409				Ivonne Ghia, P.E.		
2/20/2008	HETI-07-4389				Candido Font, P.E.		
2/20/2008	HETI-07-4388				Candido Font, P.E.		
7/25/2008	HETI-08-2081				Candido Font, P.E.		
7/25/2008	HETI-08-2153A				Candido Font, P.E.		
7/25/2008	HETI-08-2089A				Candido Font, P.E.		
11/10/2008	HETI-08-2205A				Candido Font, P.E.		
				QAI Laboratories	5/31/2024	MED-1094	Idalmis Ortega, P.E.

ASTM E330 & TAS 202	Uniform Static Air Press.	Hurricane Engineering & Testing, Inc.	10/28/2004 10/28/2004 2/20/2008 2/20/2008 7/25/2008 7/25/2008 7/25/2008 11/10/2008 12/30/2008	HETI-04-1410 HETI-04-1409 HETI-07-4389 HETI-07-4388 HETI-08-2081 HETI-08-2153A HETI-08-2089A HETI-08-2205A HETI-08-2234	Ivonne Ghia, P.E. Ivonne Ghia, P.E. Candido Font, P.E. Candido Font, P.E. Candido Font, P.E. Candido Font, P.E. Candido Font, P.E. Candido Font, P.E. Candido Font, P.E.
		QAI Laboratories	5/31/2024	MED-1094	Idalmis Ortega, P.E.
ASTM F 588	Forced Entry	Hurricane Engineering & Testing, Inc.	10/28/2004 10/28/2004 07/25/2008 07/25/2008 07/25/2008 11/10/2008	HETI-04-1410 HETI-04-1409 HETI-08-2081 HETI-08-2153A HETI-08-2089A HETI-08-2205A	Ivonne Ghia, P.E. Ivonne Ghia, P.E. Candido Font, P.E. Candido Font, P.E. Candido Font, P.E. Candido Font, P.E.

Supplemental Tests (Tested in accordance with TAS-201 and TAS-203)

TEST	DESCRIPTION	TEST LOCATION	TEST REPORT DATE	TEST REPORT #	Test Sealed by
FBC 1626.2 (TAS 201 & 203)	Large Missile Impact & Cyclic	Hurricane Engineering & Testing, Inc.	10/28/2004 10/28/2004 10/28/2004 10/28/2004 10/28/2004 2/20/2008 2/21/2008 7/25/2008 7/25/2008 7/25/2008 7/25/2008 11/10/2008 11/10/2008 11/10/2008 11/10/2008	HETI-04-1918A HETI-04-1918B HETI-04-1918C HETI-04-1918D HETI-04-1918E HETI-07-4397 HETI-07-4396 HETI-08-2089B HETI-07-4387 HETI-08-2153B HETI-08-2085 HETI-08-2205A HETI-08-2206 HETI-08-2207 HETI-08-2233	Ivonne Ghia, P.E. Ivonne Ghia, P.E. Ivonne Ghia, P.E. Ivonne Ghia, P.E. Ivonne Ghia, P.E. Candido Font, P.E. Candido Font, P.E. Candido Font, P.E. Candido Font, P.E. Candido Font, P.E. Candido Font, P.E. Candido Font, P.E. Candido Font, P.E. Candido Font, P.E. Candido Font, P.E.
		QAI Laboratories	05/31/2024 10/24/2024	MED-1094 MED-1094b	Idalmis Ortega, P.E. Idalmis Ortega, P.E.

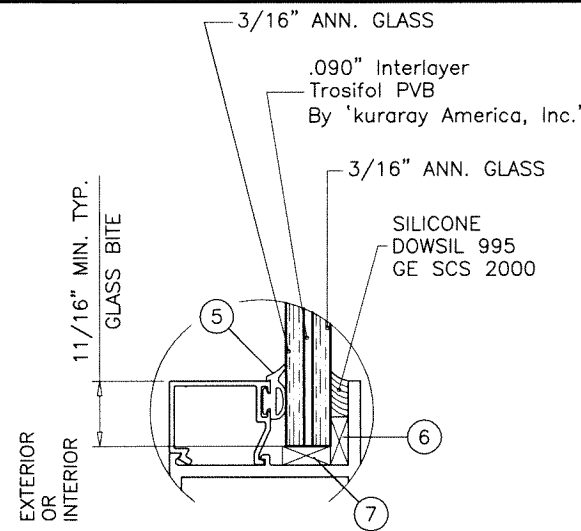
Under the limitations of the attached installation drawings, to the best of my knowledge and ability, the above product conforms to the requirements of the 2023 Florida Building Code.

Evaluation Report Engineer:

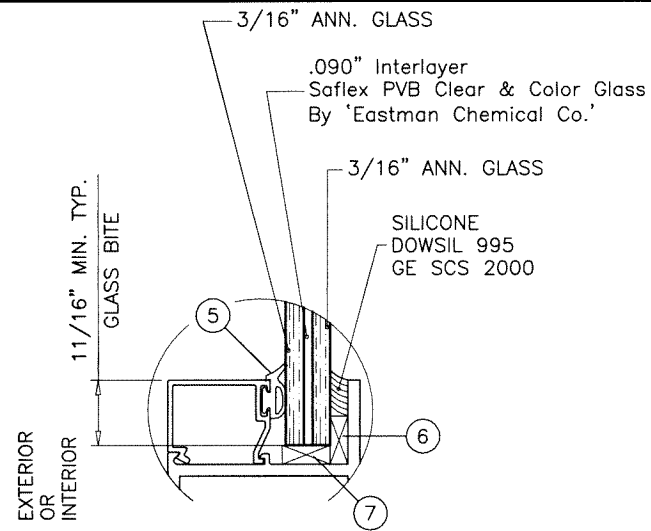
Jalal Farooq PE # 81223
Al-Farooq Corporation EB # 3538



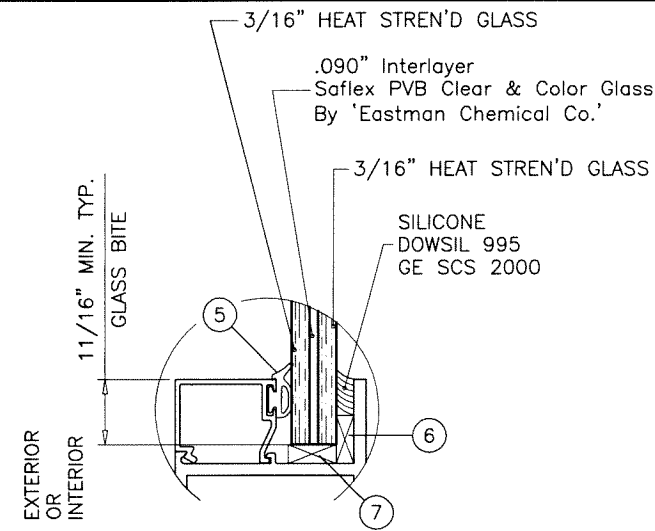
Sealed: 11/27/2024



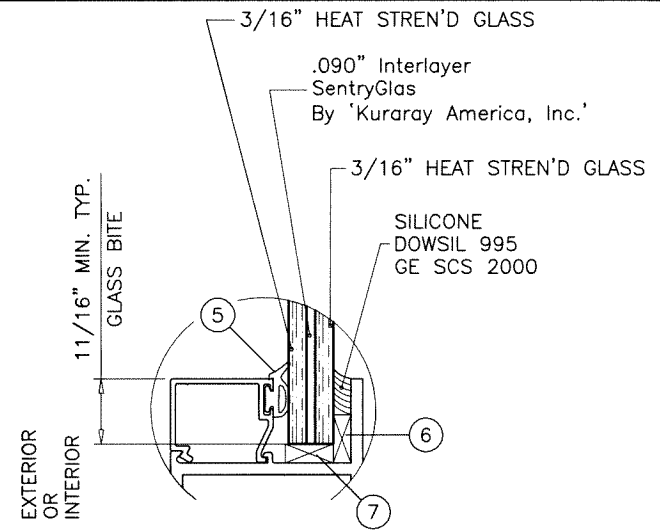
GLASS TYPE 'A'



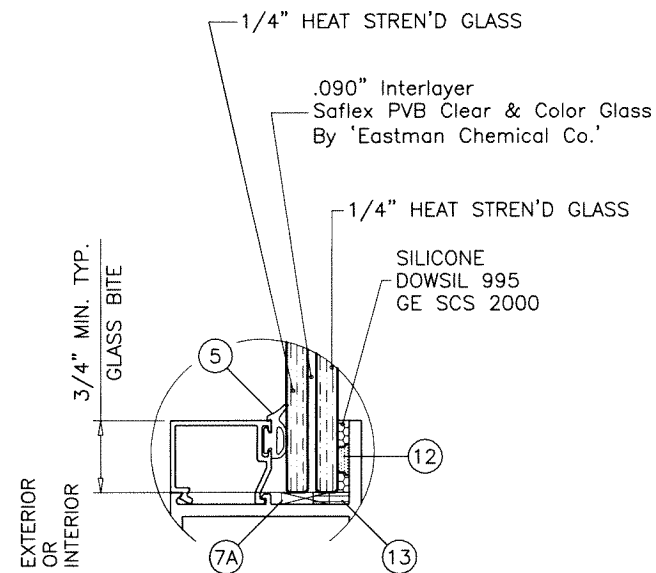
GLASS TYPE 'B'



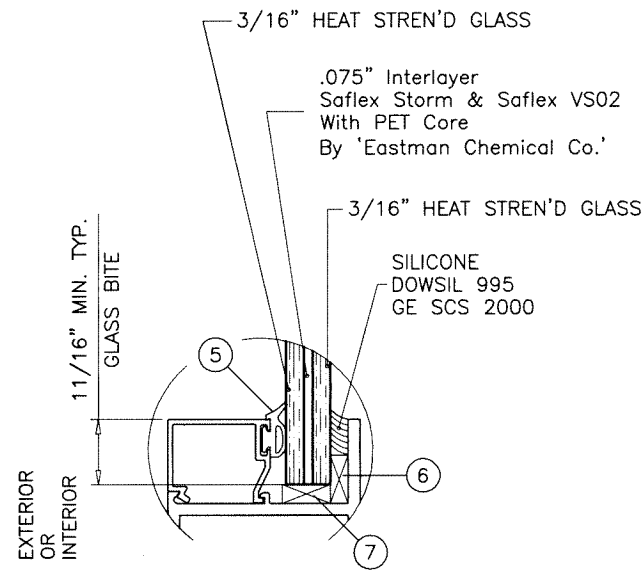
GLASS TYPE 'C'



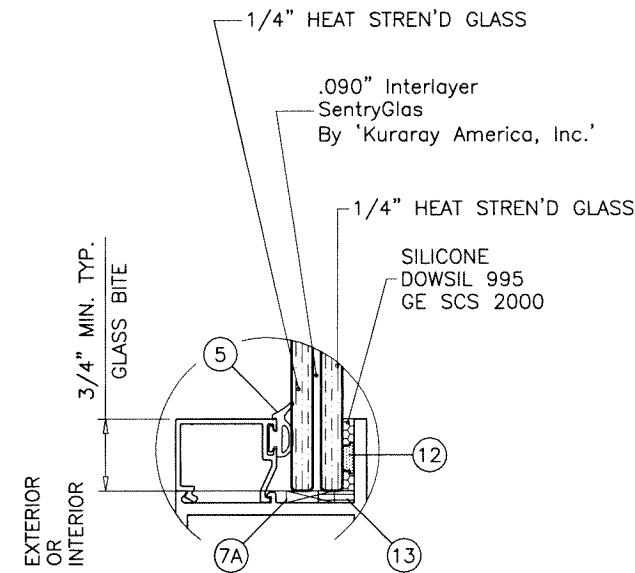
GLASS TYPE 'D'



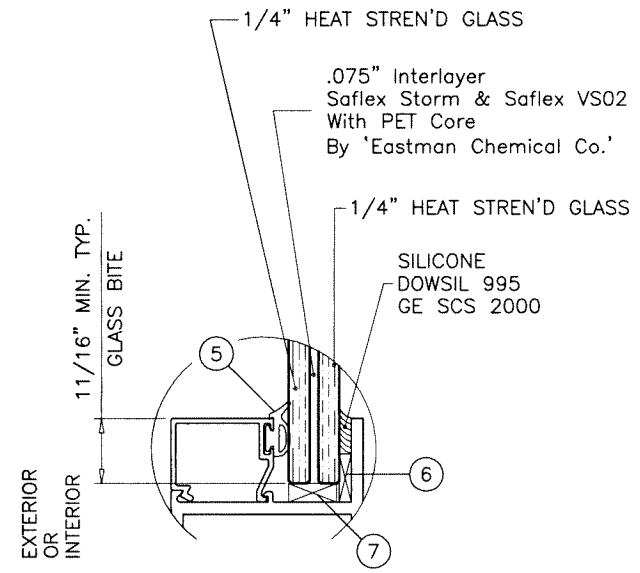
GLASS TYPE 'E'



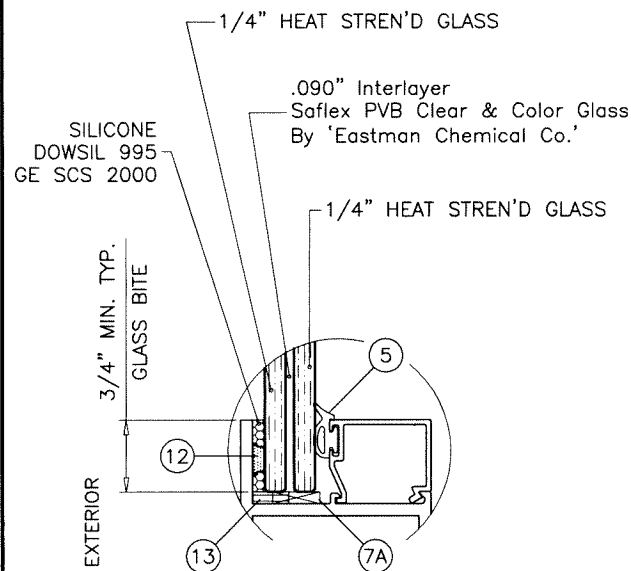
GLASS TYPE 'F'



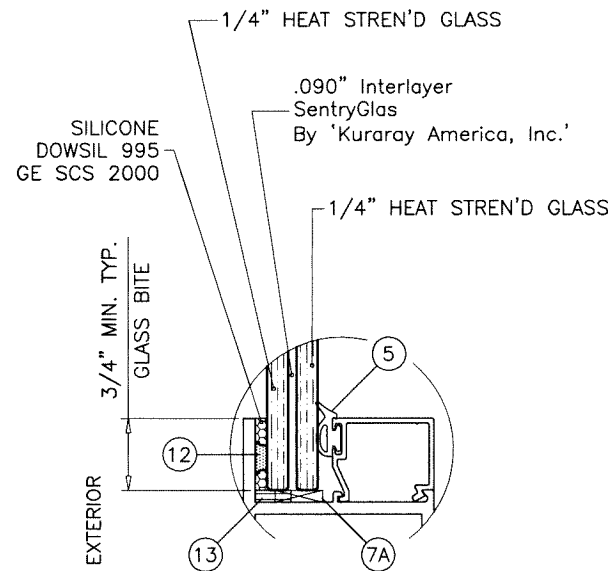
GLASS TYPE 'G'



GLASS TYPE 'H'



GLASS TYPE 'E'

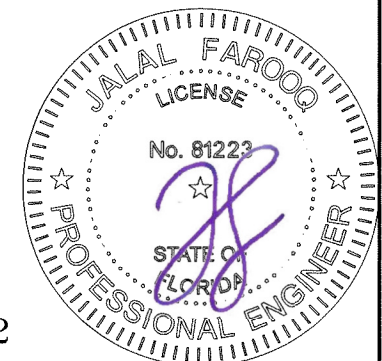


GLASS TYPE 'G'

GLAZING OPTIONS

Sealed: 12/11/2024

FL #17762



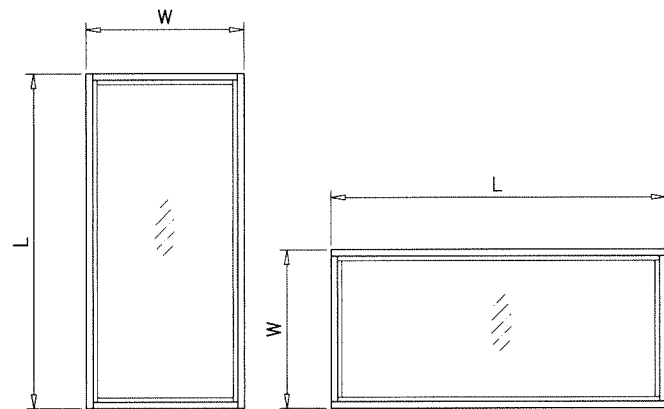
AL-FAROOQ CORPORATION
 ENGINEERS & PRODUCT DEVELOPMENT
 9360 SUNSET DRIVE, SUITE 220
 MIAMI, FLORIDA 33173
 TEL. (305) 264-8100 FAX. (305) 262-6978
 (C.A.N. 3538)
 COMP-ANL\W15-19SAT

SERIES 3000/3062 ALUM FIXED WDW. (L.M.I.)
SOL-A-TROL ALUMINUM PRODUCTS INC.
 4101 N.W. 132ND STREET
 MIAMI, FL. 33054
 TEL. (305) 681-2020 FAX. (305) 681-2035

revisions:	no	date	description

date: 04-30-15	scale: 1/2" = 1"	dr. by: TARIQ	chk. by:
drawing no. W15-19			
sheet 2 of 6			

DESIGN LOAD CAPACITY - PSF															
WINDOW DIMS.		GLASS TYPE 'A' & 'B'		GLASS TYPE 'C'		GLASS TYPE 'D'		GLASS TYPE 'E'		GLASS TYPE 'F'		GLASS TYPE 'G'		GLASS TYPE 'H'	
WIDTH (W)	LENGTH (L)	EXT.(+)	INT.(-)	EXT.(+)	INT.(-)	EXT.(+)	INT.(-)	EXT.(+)	INT.(-)	EXT.(+)	INT.(-)	EXT.(+)	INT.(-)	EXT.(+)	INT.(-)
19-1/8"	26"	80.0	80.0	80.0	80.0	100.0	100.0	80.0	80.0	100.0	100.0	80.0	110.0	75.0	95.0
26-1/2"		80.0	80.0	80.0	80.0	100.0	100.0	80.0	80.0	100.0	100.0	80.0	110.0	75.0	95.0
37"		80.0	80.0	80.0	80.0	100.0	100.0	80.0	80.0	100.0	100.0	80.0	110.0	75.0	95.0
53-1/8"		80.0	80.0	80.0	80.0	100.0	100.0	80.0	80.0	100.0	100.0	80.0	110.0	75.0	95.0
19-1/8"	38-3/8"	80.0	80.0	80.0	80.0	100.0	100.0	80.0	80.0	100.0	100.0	80.0	110.0	75.0	95.0
26-1/2"		80.0	80.0	80.0	80.0	100.0	100.0	80.0	80.0	100.0	100.0	80.0	110.0	75.0	95.0
37"		80.0	80.0	80.0	80.0	100.0	100.0	80.0	80.0	100.0	100.0	80.0	110.0	75.0	95.0
53-1/8"		-	-	80.0	80.0	100.0	100.0	80.0	80.0	80.0	90.0	80.0	110.0	-	-
19-1/8"	50-5/8"	80.0	80.0	80.0	80.0	100.0	100.0	80.0	80.0	100.0	100.0	80.0	110.0	75.0	95.0
26-1/2"		80.0	80.0	80.0	80.0	100.0	100.0	80.0	80.0	100.0	100.0	80.0	110.0	75.0	95.0
37"		80.0	80.0	80.0	80.0	100.0	100.0	80.0	80.0	100.0	100.0	80.0	110.0	75.0	95.0
53-1/8"		-	-	80.0	80.0	100.0	100.0	75.9	75.9	-	-	80.0	104.3	-	-
19-1/8"	63"	80.0	80.0	80.0	80.0	100.0	100.0	80.0	80.0	100.0	100.0	80.0	110.0	75.0	95.0
26-1/2"		80.0	80.0	80.0	80.0	100.0	100.0	80.0	80.0	100.0	100.0	80.0	110.0	75.0	95.0
37"		-	-	80.0	80.0	100.0	100.0	80.0	80.0	-	-	80.0	110.0	-	-
53-1/8"		-	-	-	-	-	-	72.3	72.3	-	-	80.0	99.4	-	-
19-1/8"	74-1/4"	80.0	80.0	80.0	80.0	100.0	100.0	80.0	80.0	100.0	100.0	80.0	110.0	75.0	95.0
26-1/2"		-	-	80.0	80.0	100.0	100.0	80.0	80.0	100.0	100.0	80.0	110.0	-	-
37"		-	-	80.0	80.0	100.0	100.0	80.0	80.0	-	-	80.0	110.0	-	-
53-1/8"		-	-	-	-	-	-	72.3	72.3	-	-	80.0	99.4	-	-



NOTE:
WIDTH AND LENGTH DIMENSIONS CAN BE ORIENTED
VERTICALLY OR HORIZONTALLY AS SHOWN ABOVE.

NOTE:
GLASS CAPACITIES ON THIS SHEET ARE
BASED ON ASTM E1300-09 (3 SEC. GUSTS).

Sealed: 12/11/2024

FL #17762



af c
AL-FAROOQ CORPORATION
ENGINEERS & PRODUCT DEVELOPMENT
9360 SUNSET DRIVE, SUITE 220 (C.A.N. 3538)
MIAMI, FLORIDA 33173 FAX. (305) 262-6978
TEL. (305) 264-8100

SERIES 3000/3062 ALUM FIXED WDW. (L.M.I.)
SOL-A-TROL ALUMINUM PRODUCTS INC.
4101 N.W. 132ND STREET
MIAMI, FL. 33054
TEL. (305) 681-2020 FAX. (305) 681-2035

no	date	by	description

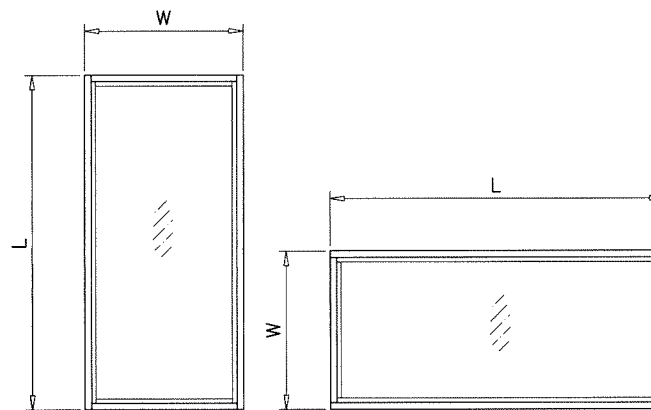
date: 04-30-15
scale: 1/2" = 1"
dr. by: TARIQ
chk. by:

drawing no.
W15-19
sheet 3 of 6

COMP-ANL\W15-19SAT

DESIGN LOAD CAPACITY - PSF											
WINDOW DIMS.		GLASS TYPE 'A' & 'B'		GLASS TYPE 'C'		GLASS TYPE 'D'		GLASS TYPE 'F'		GLASS TYPE 'H'	
WIDTH (W)	LENGTH (L)	EXT.(+)	INT.(-)	EXT.(+)	INT.(-)	EXT.(+)	INT.(-)	EXT.(+)	INT.(-)	EXT.(+)	INT.(-)
24"	36"	80.0	80.0	80.0	80.0	100.0	100.0	100.0	100.0	75.0	95.0
30"		80.0	80.0	80.0	80.0	100.0	100.0	100.0	100.0	75.0	95.0
36"		80.0	80.0	80.0	80.0	100.0	100.0	100.0	100.0	75.0	95.0
42"		80.0	80.0	80.0	80.0	100.0	100.0	100.0	100.0	75.0	95.0
48"		80.0	80.0	80.0	80.0	100.0	100.0	100.0	100.0	75.0	95.0
54"	80.0	80.0	80.0	80.0	100.0	100.0	100.0	100.0	-	-	
24"	42"	80.0	80.0	80.0	80.0	100.0	100.0	100.0	100.0	75.0	95.0
30"		80.0	80.0	80.0	80.0	100.0	100.0	100.0	100.0	75.0	95.0
36"		80.0	80.0	80.0	80.0	100.0	100.0	100.0	100.0	75.0	95.0
42"		80.0	80.0	80.0	80.0	100.0	100.0	100.0	100.0	75.0	95.0
48"		-	-	80.0	80.0	100.0	100.0	100.0	100.0	-	-
54"	-	-	80.0	80.0	100.0	100.0	80.0	90.0	-	-	
24"	48"	80.0	80.0	80.0	80.0	100.0	100.0	100.0	100.0	75.0	95.0
30"		80.0	80.0	80.0	80.0	100.0	100.0	100.0	100.0	75.0	95.0
36"		80.0	80.0	80.0	80.0	100.0	100.0	100.0	100.0	75.0	95.0
42"		-	-	80.0	80.0	100.0	100.0	100.0	100.0	-	-
48"		-	-	80.0	80.0	100.0	100.0	80.0	90.0	-	-
54"	-	-	80.0	80.0	100.0	100.0	-	-	-	-	
24"	54"	80.0	80.0	80.0	80.0	100.0	100.0	100.0	100.0	75.0	95.0
30"		80.0	80.0	80.0	80.0	100.0	100.0	100.0	100.0	75.0	95.0
36"		80.0	80.0	80.0	80.0	100.0	100.0	100.0	100.0	-	-
42"		-	-	80.0	80.0	100.0	100.0	80.0	90.0	-	-
48"		-	-	80.0	80.0	100.0	100.0	-	-	-	-
54"	-	-	77.0	77.0	96.3	96.3	-	-	-	-	
24"	60"	80.0	80.0	80.0	80.0	100.0	100.0	100.0	100.0	75.0	95.0
30"		80.0	80.0	80.0	80.0	100.0	100.0	100.0	100.0	75.0	95.0
36"		-	-	80.0	80.0	100.0	100.0	80.0	90.0	-	-
42"		-	-	80.0	80.0	100.0	100.0	-	-	-	-
48"		-	-	80.0	80.0	100.0	100.0	-	-	-	-
54"	-	-	77.0	77.0	96.3	96.3	-	-	-	-	
24"	66"	80.0	80.0	80.0	80.0	100.0	100.0	100.0	100.0	75.0	95.0
30"		-	-	80.0	80.0	100.0	100.0	100.0	100.0	-	-
36"		-	-	80.0	80.0	100.0	100.0	80.0	90.0	-	-
42"		-	-	80.0	80.0	100.0	100.0	-	-	-	-
48"		-	-	80.0	80.0	100.0	100.0	-	-	-	-
24"	72"	80.0	80.0	80.0	80.0	100.0	100.0	100.0	100.0	75.0	95.0
30"		-	-	80.0	80.0	100.0	100.0	80.0	90.0	-	-
36"		-	-	80.0	80.0	100.0	100.0	-	-	-	-
42"		-	-	80.0	80.0	100.0	100.0	-	-	-	-
24"	76"	-	-	80.0	80.0	100.0	100.0	100.0	100.0	75.0	95.0
30"		-	-	80.0	80.0	100.0	100.0	80.0	90.0	-	-
36"		-	-	80.0	80.0	100.0	100.0	-	-	-	-
42"		-	-	80.0	80.0	100.0	100.0	-	-	-	-
24"	84"	-	-	80.0	80.0	100.0	100.0	100.0	100.0	-	-
30"		-	-	80.0	80.0	100.0	100.0	-	-	-	-
36"		-	-	80.0	80.0	100.0	100.0	-	-	-	-

DESIGN LOAD CAPACITY - PSF					
WINDOW DIMS.		GLASS TYPE 'E'		GLASS TYPE 'G'	
WIDTH (W)	LENGTH (L)	EXT.(+)	INT.(-)	EXT.(+)	INT.(-)
24"	48"	80.0	80.0	80.0	110.0
30"		80.0	80.0	80.0	110.0
36"		80.0	80.0	80.0	110.0
42"		80.0	80.0	80.0	110.0
48"		80.0	80.0	80.0	110.0
54"	80.0	80.0	80.0	110.0	
24"	76"	80.0	80.0	80.0	110.0
30"		80.0	80.0	80.0	110.0
36"		80.0	80.0	80.0	110.0
42"		80.0	80.0	80.0	110.0
48"		80.0	80.0	80.0	110.0
54"	71.1	71.1	80.0	97.8	
24"	84"	80.0	80.0	80.0	110.0
30"		80.0	80.0	80.0	110.0
36"		80.0	80.0	80.0	110.0
42"		80.0	80.0	80.0	110.0
48"		80.0	80.0	80.0	110.0
54"	71.1	71.1	80.0	97.8	
24"	90"	80.0	80.0	80.0	110.0
30"		80.0	80.0	80.0	110.0
36"		80.0	80.0	80.0	110.0
42"		80.0	80.0	80.0	110.0
48"	80.0	80.0	80.0	110.0	
24"	96"	80.0	80.0	80.0	110.0
30"		80.0	80.0	80.0	110.0
36"		80.0	80.0	80.0	110.0
42"		80.0	80.0	80.0	110.0
48"	80.0	80.0	80.0	110.0	
24"	108"	80.0	80.0	80.0	110.0
30"		80.0	80.0	80.0	110.0
42"		80.0	80.0	80.0	110.0
24"	120"	80.0	80.0	80.0	110.0
30"		80.0	80.0	80.0	110.0
36"		80.0	80.0	80.0	110.0

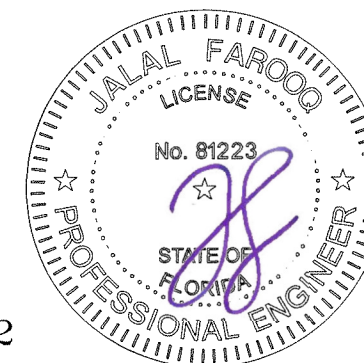


NOTE:
WIDTH AND LENGTH DIMENSIONS CAN BE ORIENTED
VERTICALLY OR HORIZONTALLY AS SHOWN ABOVE.

NOTE:
GLASS CAPACITIES ON THIS SHEET ARE
BASED ON ASTM E1300-09 (3 SEC. GUSTS).

Sealed: 12/11/2024

FL #17762



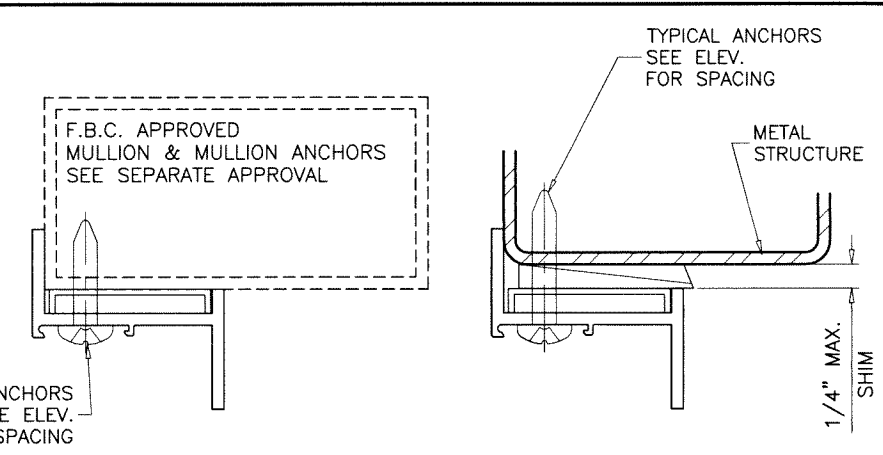
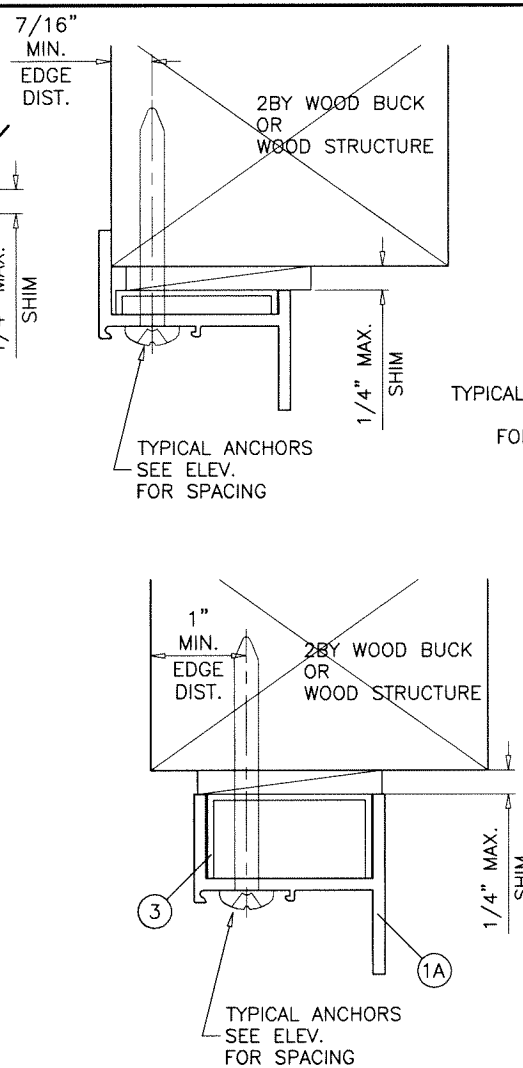
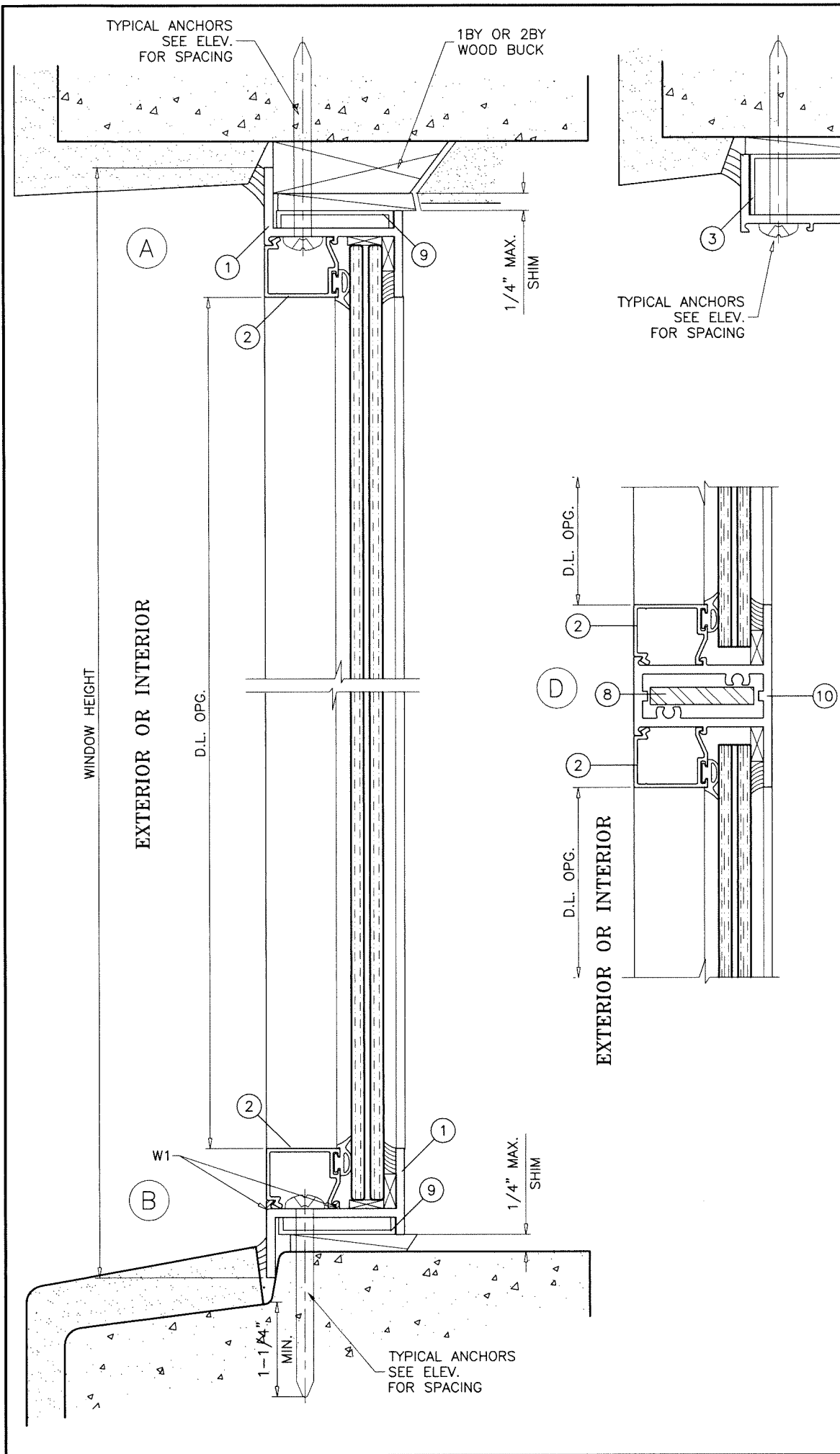
af c
AL-FAROOQ CORPORATION
 ENGINEERS & PRODUCT DEVELOPMENT
 9360 SUNSET DRIVE, SUITE 220 (C.A.N. 3538)
 MIAMI, FLORIDA 33173
 TEL. (305) 264-8100 FAX. (305) 262-6978
 COMP-ANL\W15-19SAT

SERIES 3000/3062 ALUM FIXED WDW. (L.M.I.)
SOL-A-TROL ALUMINUM PRODUCTS INC.
 4101 N.W. 132ND STREET
 MIAMI, FL. 33054
 TEL. (305) 681-2020 FAX. (305) 681-2035

no	date	by	description

date: 04-30-15
 scale: 1/2" = 1"
 dr. by: TARIQ
 chk. by:

drawing no.
W15-19
 sheet 3.1 of 6



TYPICAL ANCHORS: SEE ELEV. FOR SPACING
1/4" DIA. ULTRACON+ BY 'DEWALT' (Fu=164 KSI, Fy=148 KSI)
 INTO 2BY WOOD BUCKS OR WOOD STRUCTURES
 1-1/2" MIN. PENETRATION INTO WOOD (HEAD/SILL/JAMBS)
 THRU 1BY OR 2BY BUCKS INTO CONC. OR BLOCKS
 1-1/4" MIN. EMBED INTO CONCRETE (HEAD/SILL/JAMBS)
 1-1/4" MIN. EMBED INTO BLOCKS (JAMBS)
 DIRECTLY INTO CONCRETE OR BLOCKS
 1-1/4" MIN. EMBED INTO CONCRETE (HEAD/SILL/JAMBS)
 1-1/4" MIN. EMBED INTO BLOCKS (JAMBS)
#14 SMS OR SELF-DRILLING SCREWS (GRADE 2 CRS)
 INTO F.B.C. APPROVED MULLIONS
 AND
 INTO METAL STRUCTURES (HEAD/SILL/JAMBS)
 (3) THREADS MIN. TO EXTEND BEYOND METAL THICKNESS
 ALUMINUM: 1/8" THK. MIN. (6063-T5 MIN.)
 STEEL: 1/8" THK. MIN. (Fy = 36 KSI MIN.)
 (STEEL IN CONTACT WITH ALUMINUM TO BE PLATED OR PAINTED)

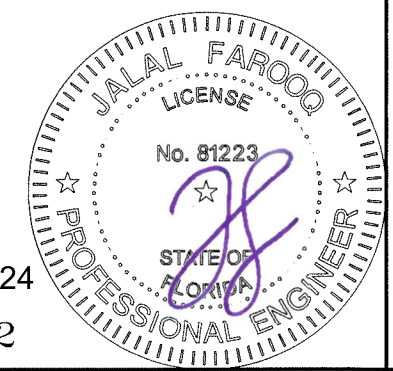
CRITICAL EDGE DISTANCE
 INTO CONCRETE AND MASONRY = 1-1/4" MIN.
 INTO WOOD STRUCTURE = 7/16" MIN. (AT FLANGE FRAMES)
 INTO WOOD STRUCTURE = 1" MIN. (AT EQUAL LEG FRAMES)
 INTO METAL STRUCTURE = 7/16" MIN.
 WOOD AT HEAD, SILL OR JAMBS SG = 0.55 MIN.
 CONCRETE AT HEAD, SILL OR JAMBS f'c = 3000 PSI MIN.
 C-90 HOLLOW/FILLED BLOCK AT JAMBS f'm = 2000 PSI MIN.

SEALANTS:
 ALL FRAME AND VENT CORNERS SEALED WITH JOINT SEALANT.
WEEPHOLES:
 W1 = 3/8" NOTCH AT 7" FROM EACH END

FLANGE AND EQUAL LEG FRAMES CAN BE USED AT ALL ANCHORAGE CONDITIONS.

WOOD BUCKS AND METAL STRUCTURE NOT BY 'SOL-A-TROL' MUST SUSTAIN LOADS IMPOSED BY GLAZING SYSTEM AND TRANSFER THEM TO THE BUILDING STRUCTURE.

Sealed: 12/11/2024
 FL #17762



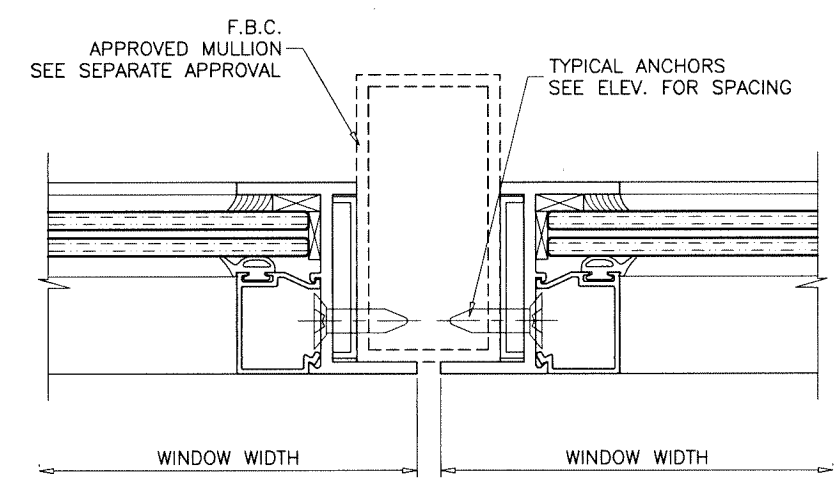
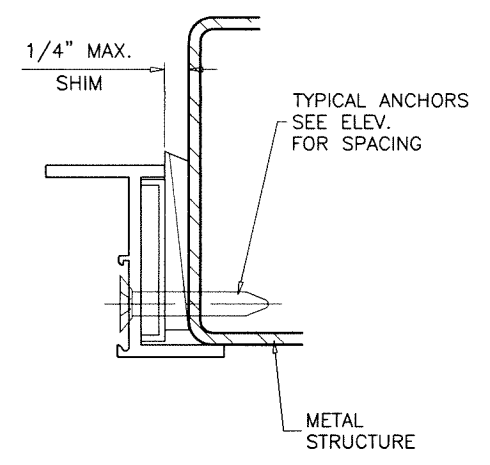
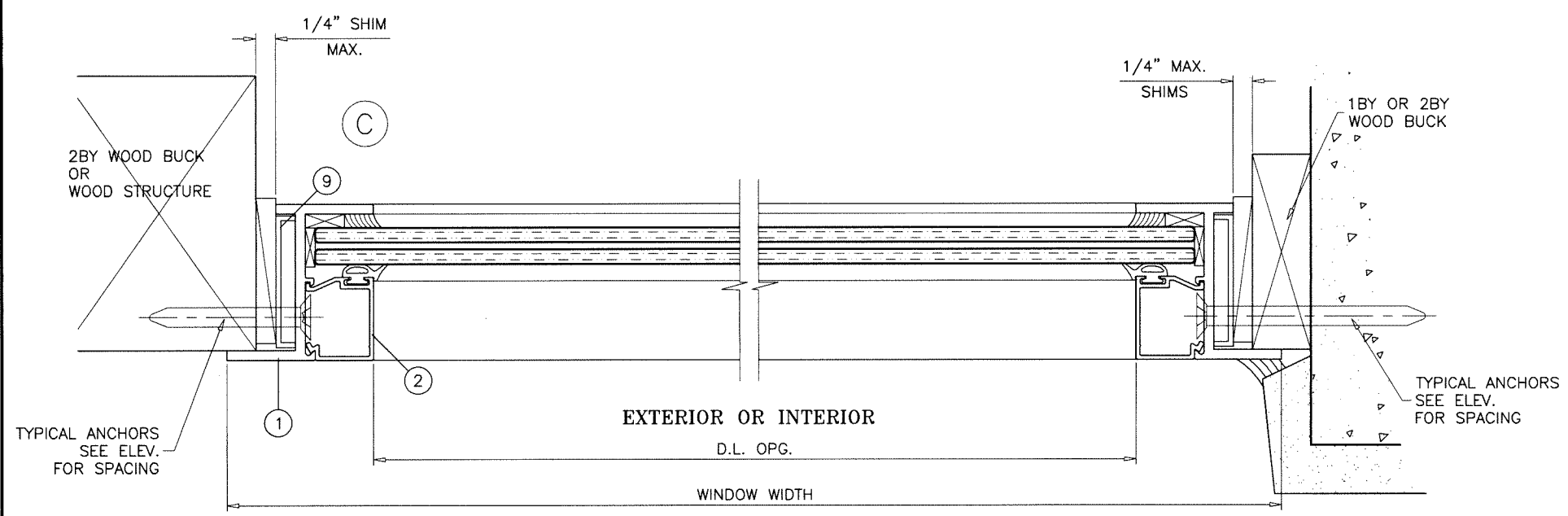
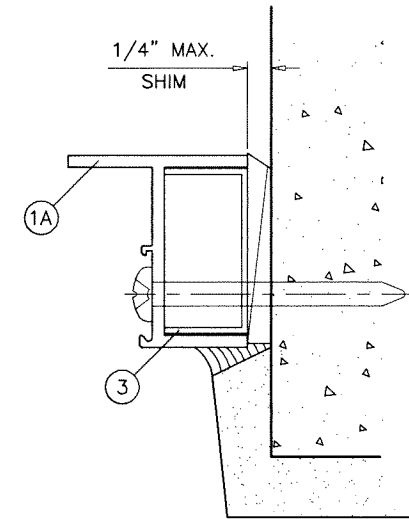
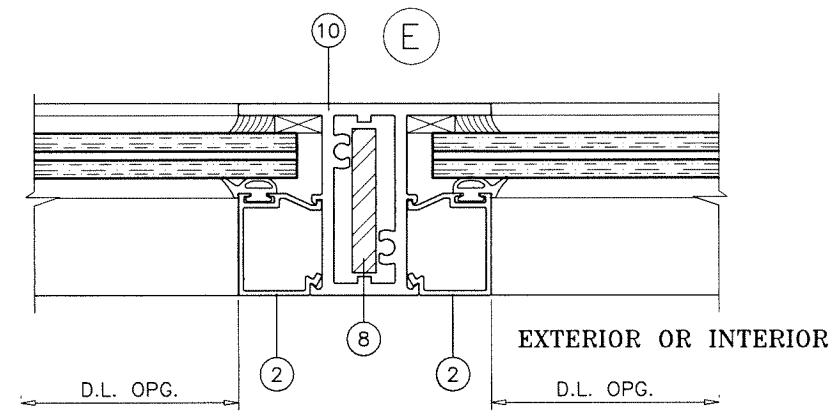
AL-FAROOQ CORPORATION
 ENGINEERS & PRODUCT DEVELOPMENT
 9360 SUNSET DRIVE, SUITE 220
 MIAMI, FLORIDA 33173
 TEL. (305) 264-8100 FAX. (305) 262-6978
 (C.A.N. 3538)

SERIES 3000/3062 ALUM FIXED WDW. (L.M.I.)
SOL-A-TROL ALUMINUM PRODUCTS INC.
 4101 N.W. 132ND STREET
 MIAMI, FL. 33054
 TEL. (305) 681-2020 FAX. (305) 681-2035

revisions:	no	date	by	description

date: 04-30-15
 scale: 1/2" = 1"
 dr. by: TARIQ
 chk. by:

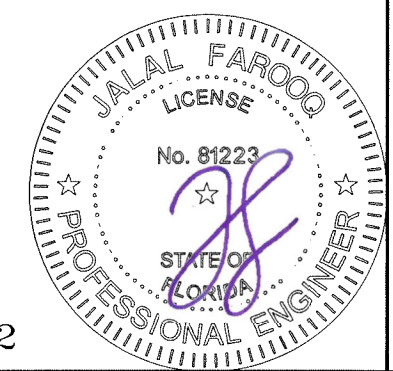
drawing no.
W15-19
 sheet 4 of 6



FLANGE AND EQUAL LEG FRAMES CAN BE USED AT ALL ANCHORAGE CONDITIONS.

Sealed: 12/11/2024

FL #17762



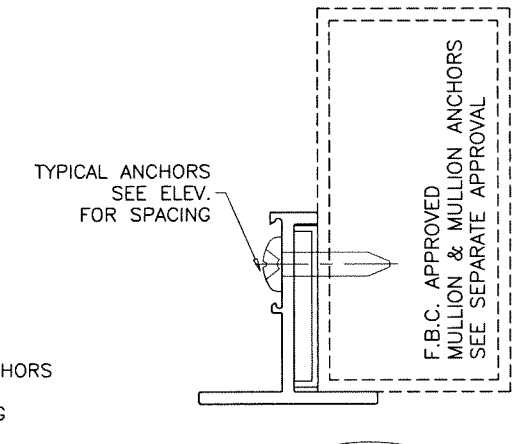
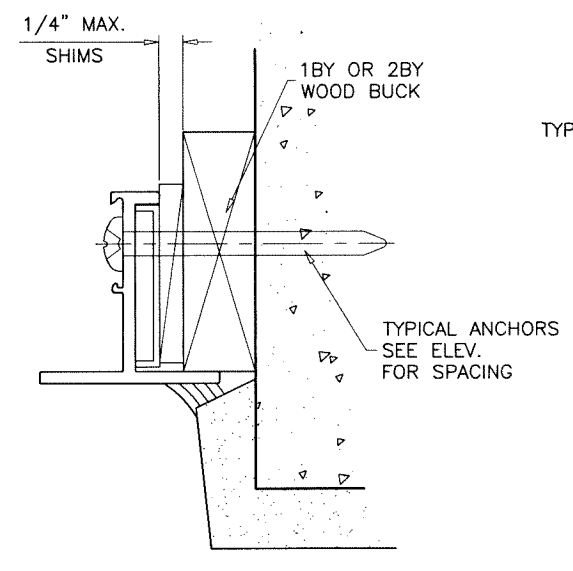
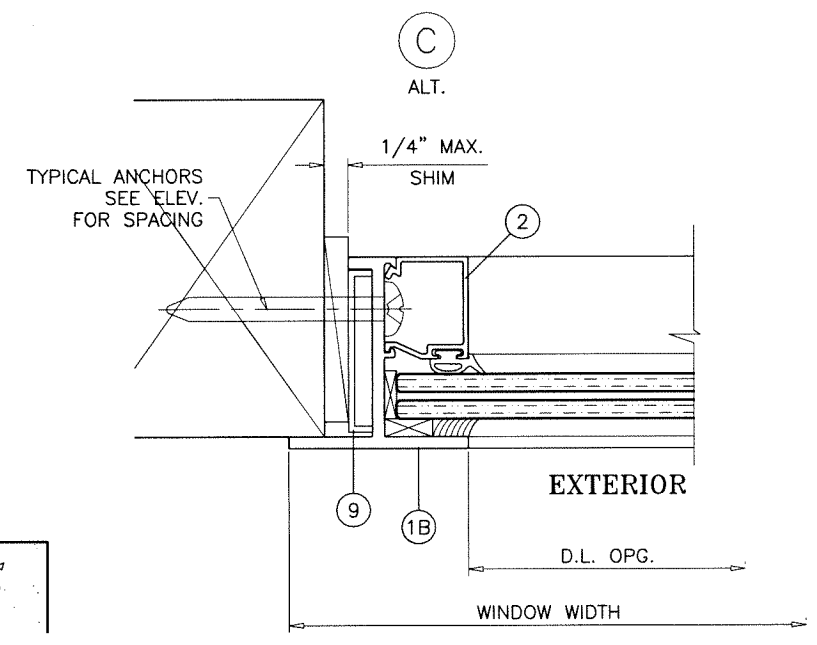
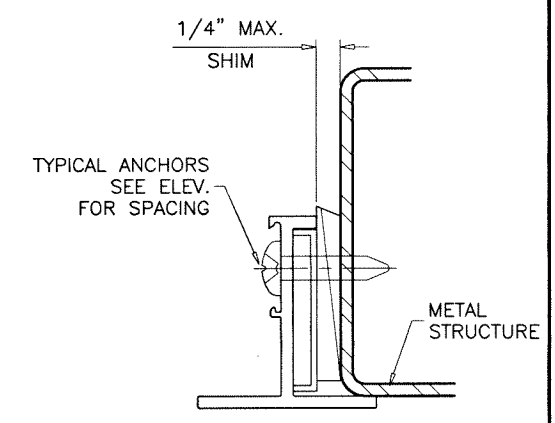
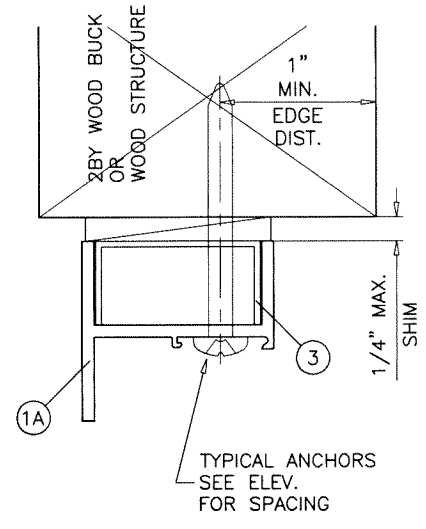
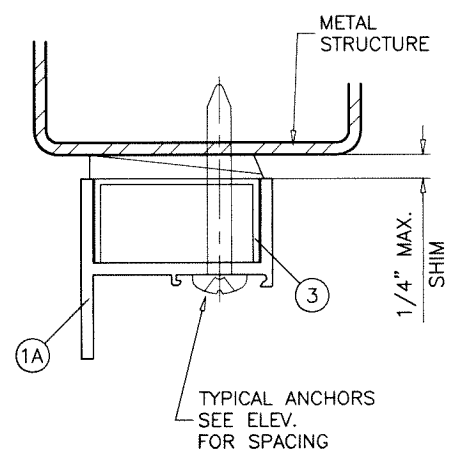
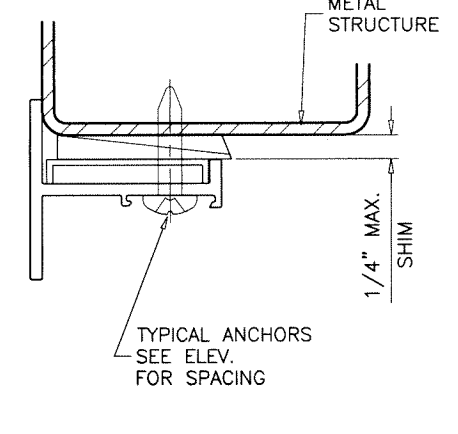
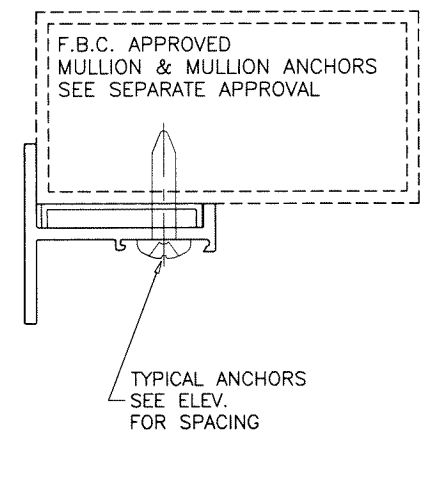
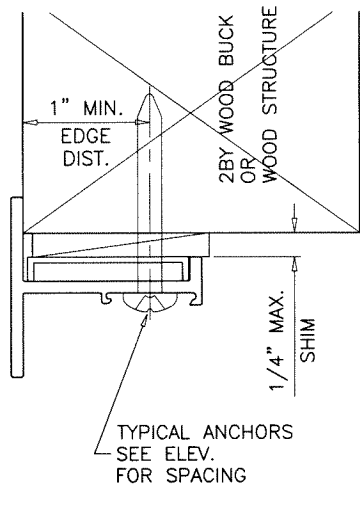
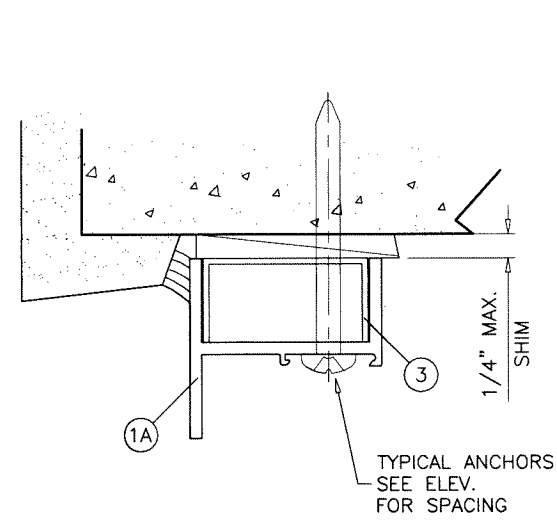
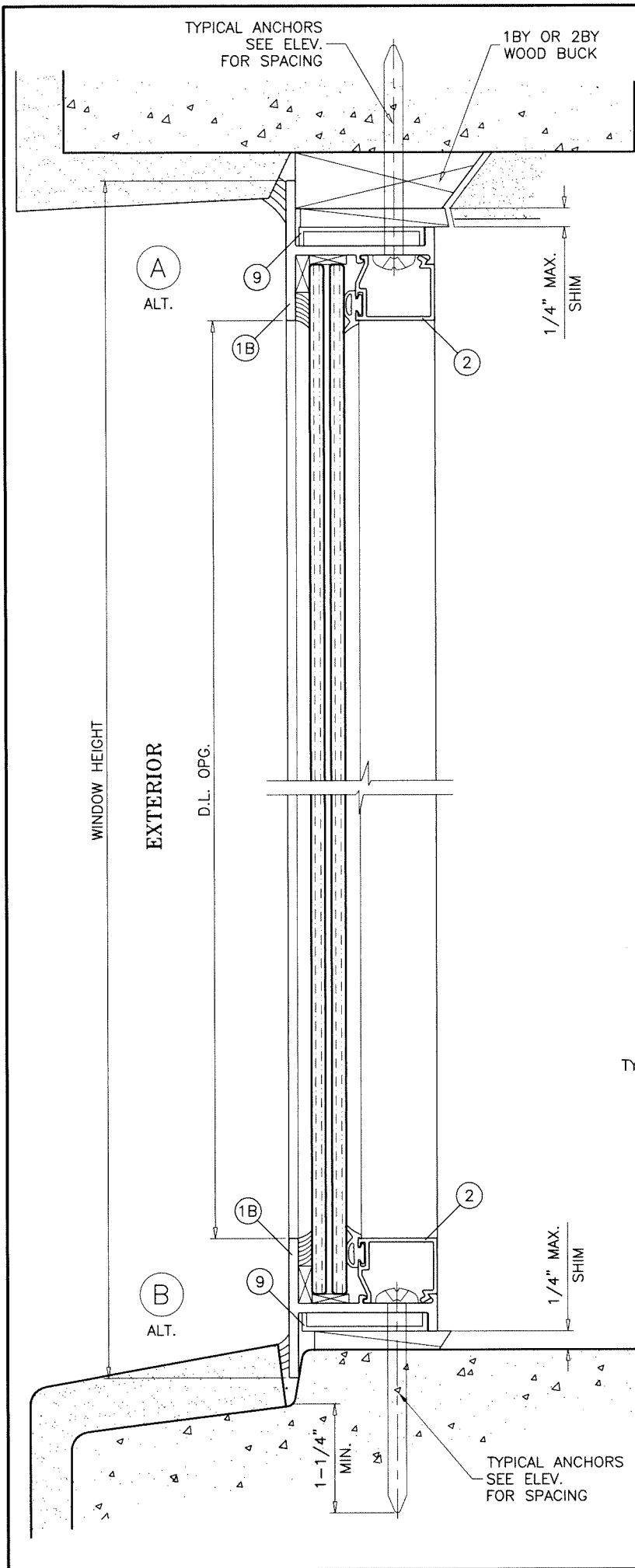
afc
AL-FAROOQ CORPORATION
ENGINEERS & PRODUCT DEVELOPMENT
9360 SUNSET DRIVE, SUITE 220
MIAMI, FLORIDA 33173 (C.A.N. 3538)
TEL. (305) 264-8100 FAX. (305) 262-6978
COMP-ANL W15-19SAT

SERIES 3000/3062 ALUM FIXED WDW. (L.M.I.)
SOL-A-TROL ALUMINUM PRODUCTS INC.
4101 N.W. 132ND STREET
MIAMI, FL. 33054
TEL. (305) 681-2020 FAX. (305) 681-2035

no	date	by	description

date: 04-30-15
scale: 1/2" = 1"
dr. by: TARIQ
chk. by:

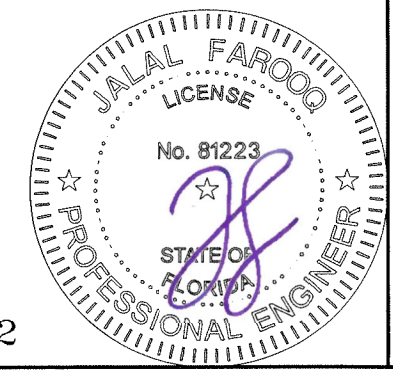
drawing no.
W15-19
sheet 5 of 6



FLANGE AND EQUAL LEG FRAMES CAN BE USED AT ALL ANCHORAGE CONDITIONS.

Sealed: 12/11/2024

FL #17762



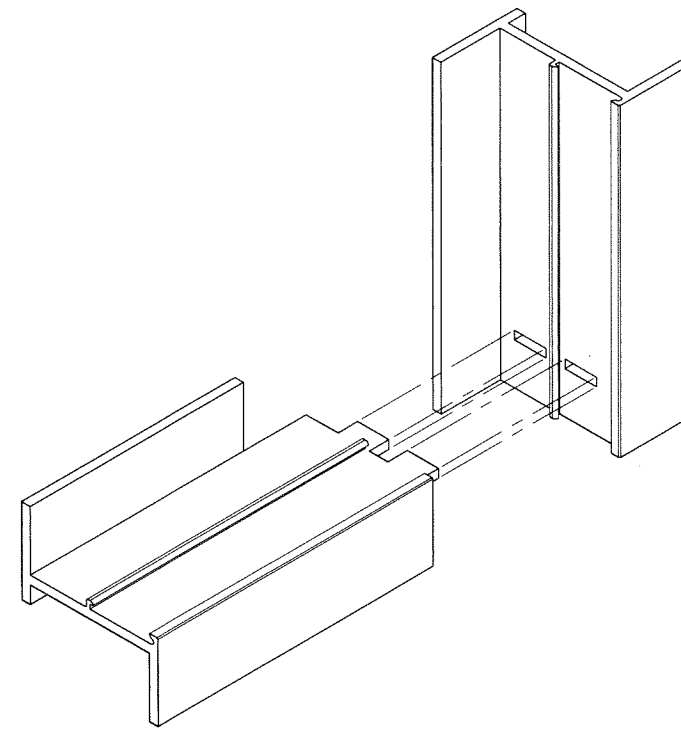
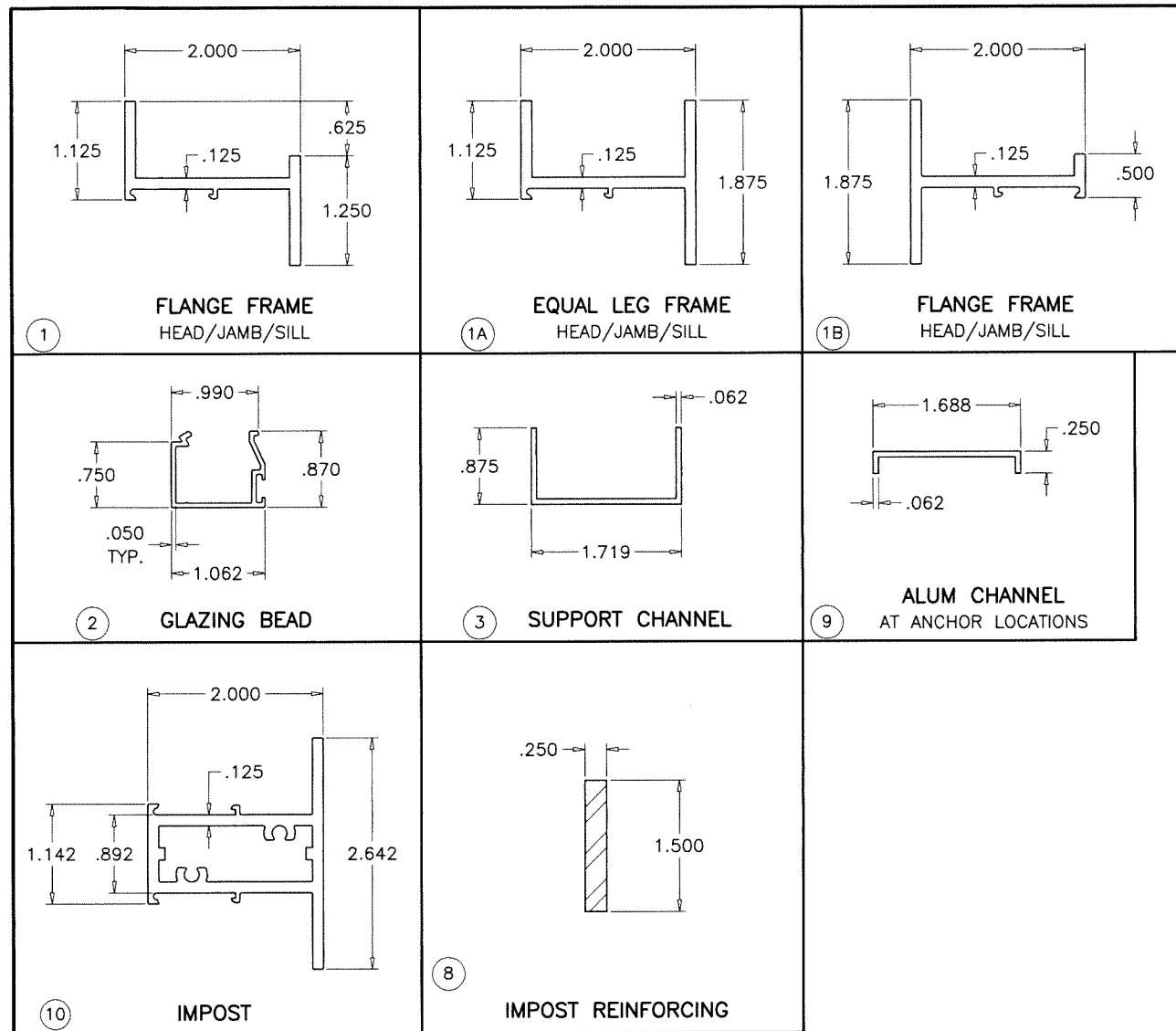
af c
AL-FAROOQ CORPORATION
 ENGINEERS & PRODUCT DEVELOPMENT
 9360 SUNSET DRIVE, SUITE 220
 MIAMI, FLORIDA 33173 (C.A.N. 3538)
 TEL. (305) 264-8100 FAX. (305) 262-6978
 COMP-ANL\W15-19SAT

SERIES 3000/3062 ALUM FIXED WDW. (L.M.I.)
SOL-A-TROL ALUMINUM PRODUCTS INC.
 4101 N.W. 132ND STREET
 MIAMI, FL. 33054
 TEL. (305) 681-2020 FAX. (305) 681-2035

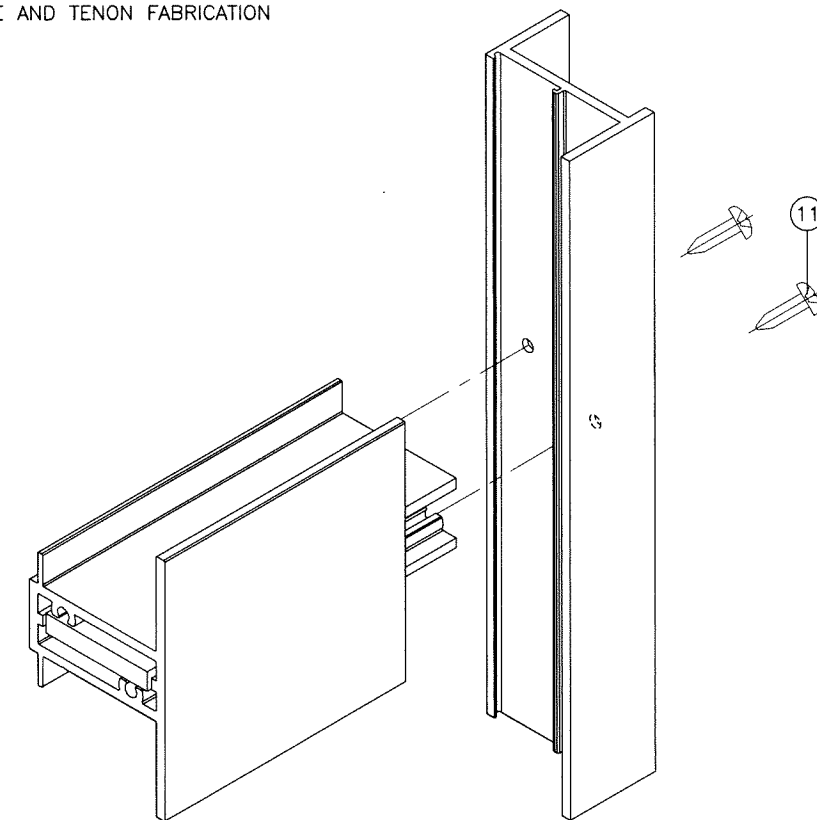
no.	date	by	description

date: 04-30-15
 scale: 1/2" = 1"
 dr. by: TARIQ
 chk. by:

drawing no.
W15-19
 sheet 5.1 of 6



FRAME CORNERS
STAKED MORTISE AND TENON FABRICATION

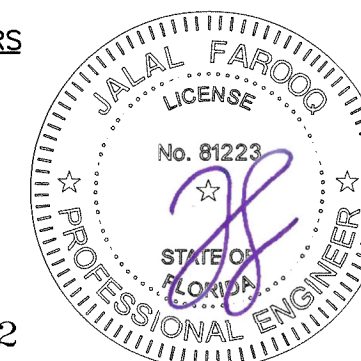


IMPOST CORNERS

ITEM	PART #	QUANTITY	DESCRIPTION	MATERIAL	MANF./SUPPLIER/REMARKS
1	ARSO-114	4	FLANGE FRAME (HEAD/JAMB/SILL)	6063-T5	-
1A	ARSO-934	4	EQUAL LEG FRAME (HEAD/JAMB/SILL)	6063-T5	-
1B	ARSO-101	4	FLANGE FRAME (HEAD/JAMB/SILL)	6063-T5	-
2	ARSO-169	4	GLAZING BEAD	6063-T5	-
3	-	AS REQD.	SUPPORT CHANNEL, 3" LONG	3003-H14	AT ANCHOR LOCATIONS
5	TR8384E	AS REQD.	GLAZING GASKET	EPDM	TREMCO, DUROMETER 60±5 SHORE A
6	326-RP-142B	2/	VENT SETTING BLOCK (1/2" X 1/4" X FULL LENGTH)	EPDM	PROTOTYPE PLASTICS, DUROMETER 80±5 SHORE A
7	326-FP-808B	AS REQD.	SETTING BLOCK (1/2" X 1/4" X 2") AT 6" FROM ENDS	EPDM	PROTOTYPE PLASTICS, DUROMETER 80±5 SHORE A
7A	-	AS REQD.	SETTING BLOCK (1/2" X 1/8" X 2") AT 6" FROM ENDS	EPDM	PROTOTYPE PLASTICS, DUROMETER 80±5 SHORE A
8	-	AS REQD.	IMPOST/MULLION REINFORCING	GALV. STEEL	ASTM A36, Fy 36 KSI
9	-	AS REQD.	ALUMINUM CHANNEL, 3" LONG	3003-H14	AT ANCHOR LOCATIONS
10	ARSO-984	AS REQD.	IMPOST	6063-T6	-
11	#10 X 1-1/2"	2/	CORNER IMPOST ASSEMBLY SCREWS	-	PH DRILLFLEX SCREWS
12	-	AS REQD.	3M BUMPON SPACERS AT 5" FROM ENDS & 10" O.C.	SILICONE	-
13	-	AS REQD.	DOUBLE FACE GLAZING TAPE (3/16" X 1/2")	PE FOAM	-

Sealed: 12/11/2024

FL #17762



af c
AL-FAROOQ CORPORATION
ENGINEERS & PRODUCT DEVELOPMENT
9360 SUNSET DRIVE, SUITE 220
MIAMI, FLORIDA 33173
TEL. (305) 264-8100 FAX. (305) 262-6978
COMP-ANL\W15-19SAT

SERIES 3000/3062 ALUM FIXED WDW. (L.M.I.)
SOL-A-TROL ALUMINUM PRODUCTS INC.
4101 N.W. 132ND STREET
MIAMI, FL. 33054
TEL. (305) 681-2020 FAX. (305) 681-2035

no.	date	description

date: 04-30-15
scale: 1/2" = 1"
dr. by: TARIQ
chk. by:

drawing no.
W15-19
sheet 6 of 6