

Little Ocmulgee EMC



2021 Annual Report

*83 Years of Providing Safe,
Efficient Service*

Little Ocmulgee EMC Annual Report



General Manager..... Lewis Sheffield

Board of Directors

President..... Carey Locke..... *Wheeler County*
Vice President..... Jim Knight..... *Telfair County*
Secretary-Treasurer..... Benny Evans..... *Wheeler County*
Asst. Secretary-Treasurer..... LaRue Fountain..... *Laurens County*
George Best..... *Telfair County*
Fred Gilder..... *Laurens County*
Jimmy Grimes..... *Wheeler County*
Wesley Yawn..... *Telfair County*

Official Notice of Annual Meeting

Little Ocmulgee Electric Membership Corporation

The 83rd Annual Meeting of Members of Little Ocmulgee Electric Membership Corporation (LOEMC) will be held at the Wheeler County Recreation Department in Alamo on Wednesday, Nov. 10, 2021. The event will be drive-thru only this year. See page 20H for details.

Nominating Committee Report

We, your Committee on Nominations, do hereby place in nomination the following candidates from each of the following districts for director of Little Ocmulgee EMC, to be considered at the 83rd Annual Meeting of Members on Nov. 10, 2021.

District 1.....(Laurens County)..... **Ronnie Bates**
Dee Cullen III
District 2.....(Telfair/Dodge counties)..... **George Best**
District 3.....(Wheeler/Montgomery counties)..... **Benny Evans**

**IN WITNESS WHEREOF, WE HEREUNTO SET OUR HANDS THIS
24th DAY OF AUGUST 2021.**



Committed to Service

Dedicated employees and directors are the strength of any organization. This year, Little Ocmulgee Electric Membership Corporation proudly recognizes 130 years of distinguished service from the following personnel:

- **40 years:** Keith Couey and Larry Swinson
- **20 years:** Carey Locke and Barry Ryals
- **10 years:** Jimmy Grimes

Cover photo by Amicalola EMC employee Donna Gaddis.

Financial Summary

Financial Statements

(For the years ended Dec. 31, 2020, and Dec. 31, 2019)



Balance Sheet

2020

2019

ASSETS

Utility plant, less accumulated provision for depreciation	\$ 51,098,150	\$ 50,483,970
Other property and investments	\$ 6,906,176	\$ 6,916,196

CURRENT AND OTHER ASSETS

Cash and temporary investments	\$ 1,345,802	\$ 741,882
Accounts receivable	\$ 989,934	\$ 1,472,475
Inventories	\$ 298,226	\$ 259,047
Other current and accrued assets	\$ 1,236,775	\$ 824,582
Deferred debits	\$ 934,426	\$ 680,579

TOTAL ASSETS

\$ 62,809,489	\$ 61,378,731
---------------	---------------

LIABILITIES AND MEMBERS' EQUITY

Memberships	\$ 39,395	\$ 38,710
Member capital and margins	\$ 24,869,418	\$ 24,005,378

LIABILITIES

Long-term debt	\$ 29,644,888	\$ 28,896,496
Current and accrued liabilities	\$ 7,005,788	\$ 7,938,147
Deferred credits and other liabilities	\$ 1,250,000	\$ 500,000

TOTAL LIABILITIES AND MEMBERS' EQUITY

\$ 62,809,489	\$ 61,378,731
---------------	---------------

Statement of Revenue and Expenses

2020

2019

REVENUE

Operating revenues	\$ 22,968,977	\$ 23,665,085
--------------------	---------------	---------------

EXPENSES

Purchased power	\$ 14,137,189	\$ 14,474,899
Operations	\$ 622,259	\$ 578,726
Maintenance	\$ 2,107,632	\$ 2,762,227
Consumer accounts and services	\$ 846,144	\$ 786,915
Customer service and informational expense	\$ 18,216	\$ 20,255
Administrative and general	\$ 1,167,905	\$ 1,088,613
Depreciation	\$ 1,898,501	\$ 1,770,809
Interest on long-term debt and taxes	\$ 1,200,000	\$ 1,416,000

TOTAL OPERATING EXPENSES

\$ 21,997,846	\$ 22,898,444
---------------	---------------

PATRONAGE CAPITAL AND MARGINS

Net operating margins	\$ 971,131	\$ 766,641
Nonoperating margins	\$ 183,085	\$ 172,872
Capital credits from associated companies	\$ 86,504	\$ 64,909

TOTAL PATRONAGE CAPITAL AND MARGINS

\$ 1,240,720	\$ 1,004,422
--------------	--------------

Little Ocmulgee EMC Annual Report Board of Directors Candidates



Ronnie Bates



Hello, my name is Ronnie Bates, and I am excited about the opportunity to serve as your Director at the Little Ocmulgee EMC. I was born and raised in rural Laurens County and have lived on Little Ocmulgee EMC lines my entire life. Like many of you, I came from a hardworking family. I know what it's like to struggle to pay a light

bill. I have a deep appreciation for Little Ocmulgee EMC and the dedicated employees who work there and keep the lights on. I understand the value of friends, neighbors and relatives, and I am dedicated and committed to continuing to provide our communities with safe, reliable, affordable electricity for many years to come.

I am married to Mandy Bates, and we have four children and two grandchildren. I have owned and operated B&S Industrial Contractors since 1998 as well as Bates Equipment Rental & Supply, as of this year. I began working in the construction/welding field over 35 years ago, and now I am so

proud to see how much the industry has grown that we now have over 50 employees and offer a wide range of services.

My desire to be a Director for the Little Ocmulgee EMC comes from hard work and being a proven businessperson. I hope to bring experience and knowledge to the co-op that will yield great benefits for all the members. Although I'm not a politician, I have a lifelong relationship with many members and businesses generated from open lines of communication and problem-solving.

I have had the pleasure of being a member of Little Ocmulgee EMC since 1988, so I know they are a great group of employees. I truly consider it a privilege to have the opportunity to run for the Board of Directors of an organization with such a wonderful, dedicated staff. I would like to respectfully ask for your vote for the Board of Directors, and I would greatly appreciate your support. I look forward to meeting and talking with as many members as possible between now and the upcoming Annual Meeting on Wednesday, Nov. 10. If you have any questions or concerns, please contact me at (478) 290-7641.

O.D. "Dee" Cullen



A lot of times we are asked to fill the shoes of a mighty fine person. That person I'm referring to is Grant Rowe, who was a Director for the Little Ocmulgee EMC for many years. He served in that position very unselfishly. I would like to officially announce that I'm going to try to fill those shoes to the best of my ability! I am asking you

to please vote for me as a Director that represents parts of Laurens County, Wheeler County and Telfair County, as well as small portions of Montgomery County and Dodge County. The election will be held Nov. 10 at the Little Ocmulgee EMC Annual Meeting. Because of the COVID-19 pandemic, it will be held as a drive-thru Annual Meeting, most likely at the Wheeler County Gym in Alamo. Changes will be announced!

Information about myself:

- Lifelong resident of Laurens County.
- Dee Cullen, along with wife, Phyllis, of 44 years, were owners of Cullen Equipment Co., a family-owned John

Deere dealership, for more than 30 years.

- Lifelong member of Jefferson Street Baptist Church.
- After college, learned a strong work ethic by farming with my uncle, Bo Perry. My grandfather, Tom Gilder, farms in lower Laurens County.
- My passion for serving my fellow man has given me the opportunity to serve on several boards with a main vision of growth and improvement!
- Director at Morris Bank for 40 years, retiring at the end of this year.
- Served as a Director of the Laurens County Farm Bureau.
- Former President of the Lauren's County Cattleman's Association.
- Served as a Director of the Dublin Rotary Club.
- Served as a Director of the Dublin Recreation Authority.

I, Dee Cullen, humbly ask for your support and vote for Director of Little Ocmulgee EMC! If you have any questions or suggestions, please contact me at (478) 984-6115.

Thank you!

Letter of Authorization and Annual Meeting Minutes



LETTER OF AUTHORIZATION

For Churches, Clubs or Organizations at Annual Meeting

(Name of Secretary of organization or other designated official)
has been appointed to represent

(Name of church, club or other organization)

(Address of church, etc.)

Account No.

as its voting delegate at Little Ocmulgee EMC's Annual Membership Meeting on Wednesday, Nov. 10, 2021.

(Signature of Secretary of organization or other designated official)

Witnesses:

(If you are to be the representative of your church, club, or other organization at the Annual Meeting, please have
this form completed and bring it with you to the meeting.)

MINUTES OF THE ANNUAL MEETING OF THE MEMBERS OF THE LITTLE OCMULGEE ELECTRIC MEMBERSHIP CORPORATION

Due to the COVID-19 pandemic in place and with the safety and well-being of our Members and employees in mind, The Little Ocmulgee Electric Membership Corporation held the 82nd Annual Meeting of Members on November 11, 2020, as a drive-thru meeting in the parking lot in front of the Wheeler County High School Gym in Alamo, Georgia.

Two commercial-sized tents were set up with two drive-thru lines for Members to pass through and receive an Annual Report, Minutes from the 81st Annual Meeting held November 13, 2019, and a door prize, drink and crackers.

General Manager Lewis Sheffield opened the meeting at 12:30 p.m. by allowing the first vehicles in line to begin passing through. The meeting lasted until 2:30 p.m. with 226 registered Members passing through approving of the Minutes from the 81st Annual Meeting held November 13, 2019, as well as reelecting the Directors put forth by the Nominating Committee. The

following were reelected to three-year terms without any opposition: District No. 1 - Laurens County, Georgia - Fred Gilder; District No. 2 - Telfair County and Dodge County, Georgia - Jim Knight; and District No. 3 - Wheeler County and Montgomery County, Georgia - Jimmy Grimes.

The Financial Summary listed in the Annual Report was presented to the Members within the Annual Report. Service awards were presented to the following: Sam Hill and Steve Murray, 30 years; Jason Crawford, Jerry Edge, Robbie Harrelson and Teresa Lawrence, 25 years; Tammy Hinson, 20 years; John Yawn, 15 years; Shelby Holland, 10 years.

There being no further business, the Annual Meeting business meeting was duly adjourned.

Approved:

Carey Locke, President

Benny Evans, Secretary

Restoring Power After an Outage

When your power goes out, it's typically restored quickly. But when a major ice storm, tornado or other natural disaster causes widespread damage, extended outages may occur.

Restoring power after a major outage involves more than removing a few trees and throwing a switch. Line crews work long, hard hours—often in bad weather and rough terrain—to repair electric systems after major devastation.

The mission of Little Ocmulgee EMC is to provide safe, reliable and affordable service to our members.

"We all need electricity to keep our daily lives running, which is why Little Ocmulgee EMC's goal is always to restore power as safely and quickly as possible," says Little Ocmulgee EMC General Manager Lewis Sheffield. "Electric cooperatives follow a restoration plan that restores power to the greatest number of people in the shortest amount of time, never stopping work until the very last outage is restored."

Work to repair the electric system and restore power follows a process similar to the one outlined here.



SCOTT VAN OSDOL

1

Outages reported

Call Little Ocmulgee EMC at (800) 342-1290 or use your mobile app to report an outage. We are prepared to take your calls, but remember: A major outage can affect thousands of members, so we appreciate your patience.

If you or a family member depends on life support that is jeopardized by the loss of electricity, alert Little Ocmulgee EMC. We will make every effort to restore your power quickly, but sometimes damage up the line must be repaired first in order to complete restoration at your home. Be prepared with an alternate plan to leave your home in case of an emergency.

2

High-voltage transmission lines

Transmission towers and power lines supply electricity to one or more local distribution substations. These towers and lines seldom fail, but they can be damaged in severe storms. When damaged, they must be repaired first in order for other parts of the system to operate.



ISTOCK.COM / TEBNAD



ISTOCK.COM / DEYAN AROBAVA

3

Distribution substations

Local distribution substations can provide power to hundreds or thousands of members. In the event of a major outage, line crews inspect substations first to determine whether problems stem from high-voltage transmission lines feeding into the substation, the substation itself or something farther down the line. If the problem can be corrected at the substation, power may be restored to many members.



EILEEN TUTTLE / UNION RURAL ELECTRIC

4

Main distribution lines

If the problem can't be isolated at the substation, main distribution supply lines are checked next. These lines deliver electricity to large groups of members in communities or housing developments. When power is restored at this stage, all members served by these distribution lines will have power as long as there are no problems farther down the line.

5

Tap lines

If local outages continue, supply lines, also known as tap lines, are inspected.

Tap lines carry power to transformers mounted on utility poles or placed on pads for underground service outside homes, schools and businesses. Line crews make these repairs based on restoring service to the greatest number of members.



COBB EMC

6

Individual homes

Sometimes, damage occurs on the service line between a home and the transformer on a nearby utility pole. This can explain why you don't have power when your neighbor does. Always call to report an outage to help line crews isolate local issues like these. While our crews repair all power lines and equipment leading to homes or businesses, members themselves, not the co-op, are responsible for damage to any equipment at the building other than the meter. You'll need to call a licensed electrician for those repairs.



MATT COLE / GREYSTONE POWER

7

Work until power is restored

During a major outage, other electric cooperatives often send line crews to assist Little Ocmulgee EMC with restoring power.

These crews all work together to return life to normal as quickly as possible.

"Lineworkers who brave the elements to restore power after an outage put their safety and the safety of those they serve first," Sheffield says. "They work around-the-clock to get the power grid back up and running."

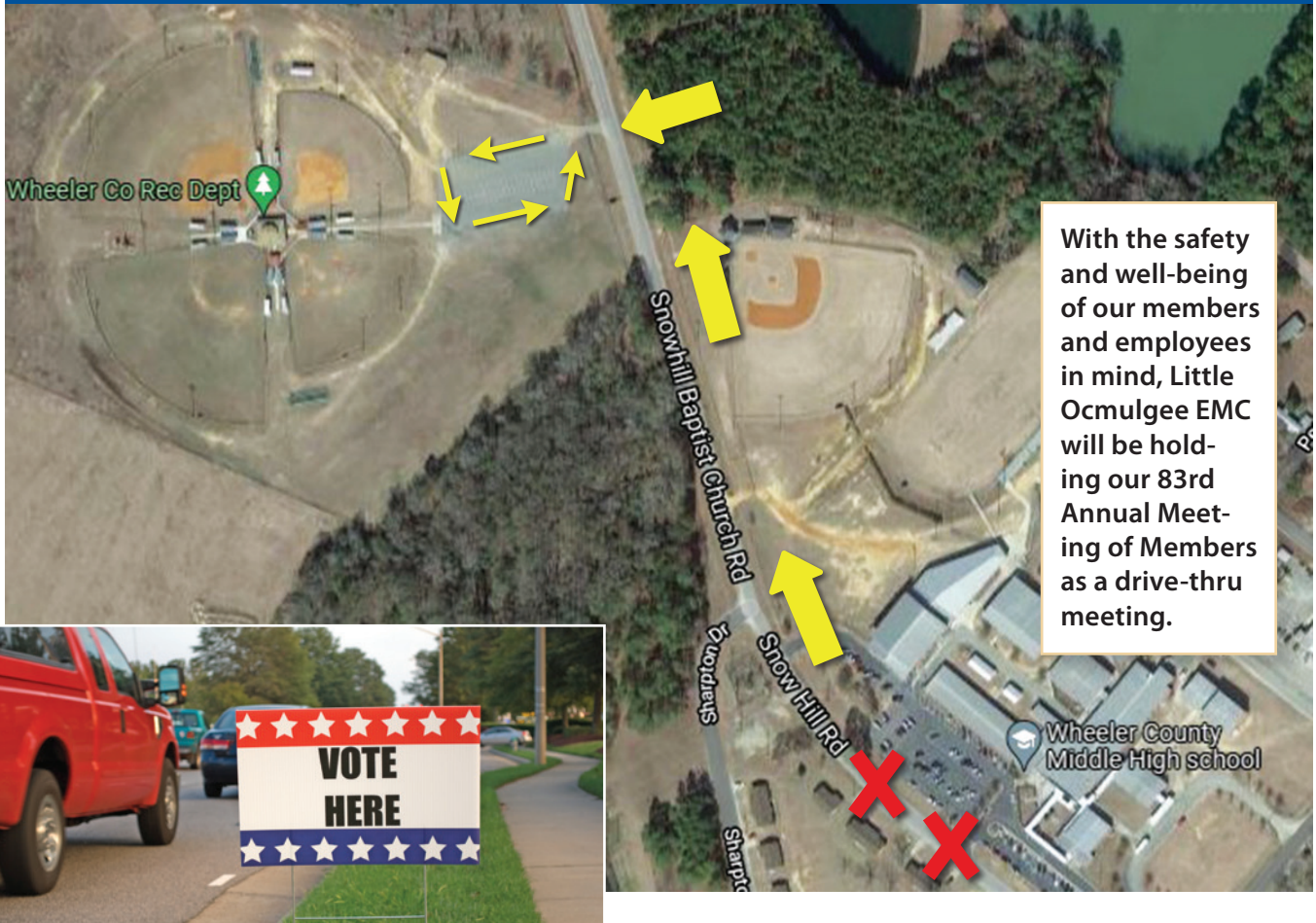


PIEDMONT EMC

Little Ocmulgee EMC Annual Report

83rd
Anniversary
1938 - 2021

Little Ocmulgee EMC to Hold Drive-Thru Annual Meeting



Wednesday, Nov. 10, 2021
7:00 a.m. - 7:00 p.m.

Wheeler County
Recreation Department
125 Snowhill Baptist Church Road
Alamo, Ga 30411

Members are asked to come to the recreation department Wednesday, Nov. 10, between 7:00 a.m. and 7:00 p.m., and Little Ocmulgee EMC employees will direct you. Please enter on Snowhill Baptist Church Road to register.

Members must stay in their vehicles during the entire process. Each member who participates in our drive-thru Annual Meeting will receive an attendance gift.

If you have any questions or concerns about the change in format, please contact Lewis Sheffield at (800) 342-1290, ext. 201, or lewiss@loemc.com. We look forward to seeing you there!