

KAYRA

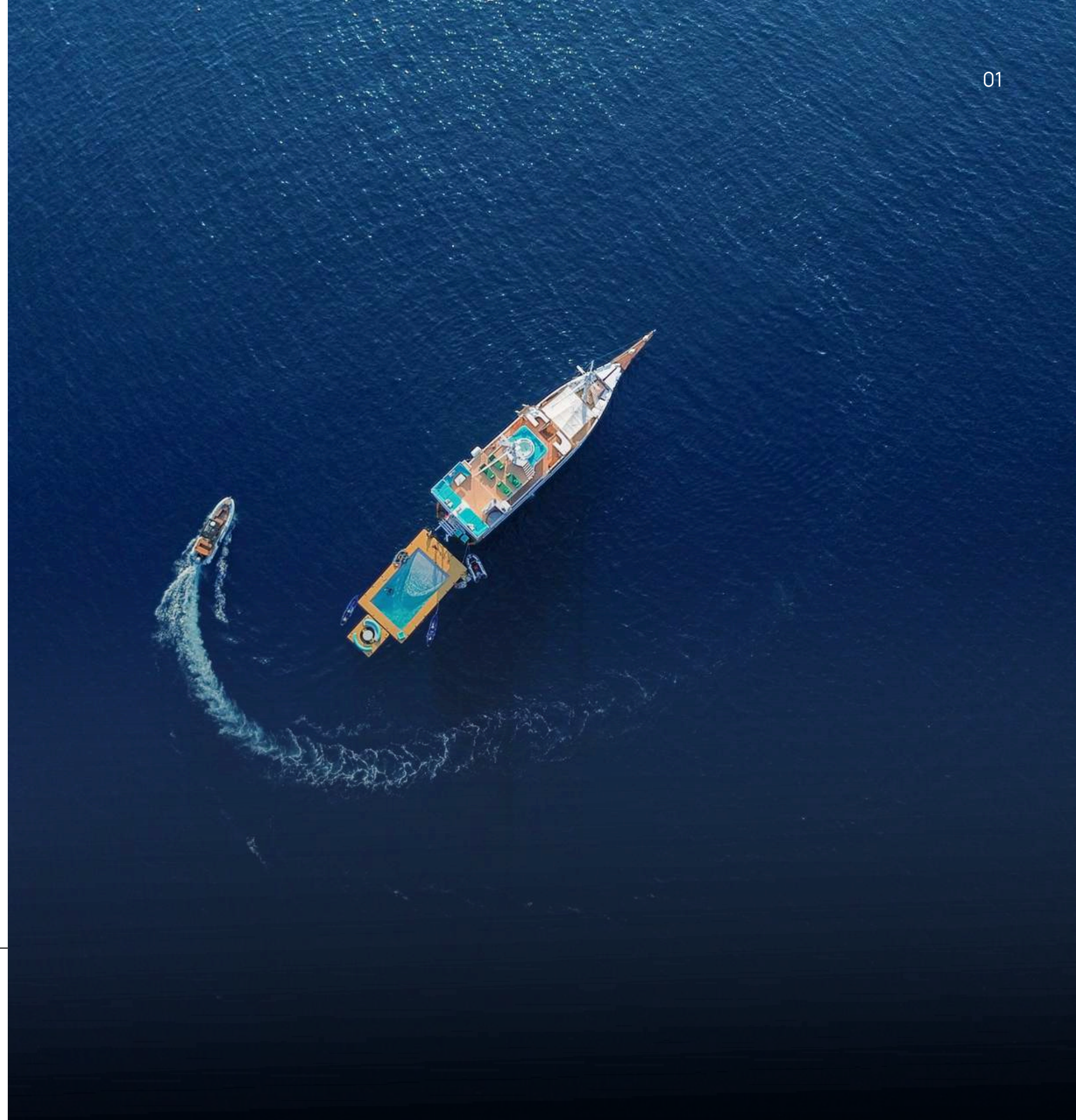
PHINISI

BROCHURE



THE ART OF WELLNESS ON THE WATER

- Kayra is a 37-meter phinisi yacht designed for effortless escape at sea.
- With four beautifully appointed, air-conditioned en-suite cabins accommodating up to 8 guests, including a Master and VIP suite with private balconies, comfort comes naturally on board. A dedicated wellness area featuring a spa and gym,
- Ideal for families, friends, or couples, Kayra offers a refined yet relaxed way to experience the ocean. **Available for private charter only.**



LOA	CABIN	GUESTS	CREW	TYPE
37 M	4	8	10	PHINISI



SPECIFICATION

Technical Specifications

Boat Build	Indonesia, 2024
Type	Phinisi Yacht
LOA	121ft/38m
Beam	26ft/8m
Draft	7 ft/2m
Cabins	3+1
Guests	8pax
Speed	6-7knots
Engine	Mitsubishi 340hp
Fuel Capacity	6,000ltr
Water Capacity	4,000 ltr
Propeller	4-blade 104 cm span Ø44 cm
Navigation	Garmin Aquamap 1252

Water Sports Equipment

5 x Stand up paddle board	Floating swim platform
2 x 2 person Sea kayaks	Floating pool
2 x Sea scooter	Floating XXL sunbed
1 Wakeboard	Inflatable waterslide
1 Waterski	Inflatable climbing slide
Seabob	Snorkelling equipment
4 x eFoils	Fishing equipment
Towables	Aqua Lung diving equipment (for certified divers)
Floating cabana (sofa & table)	

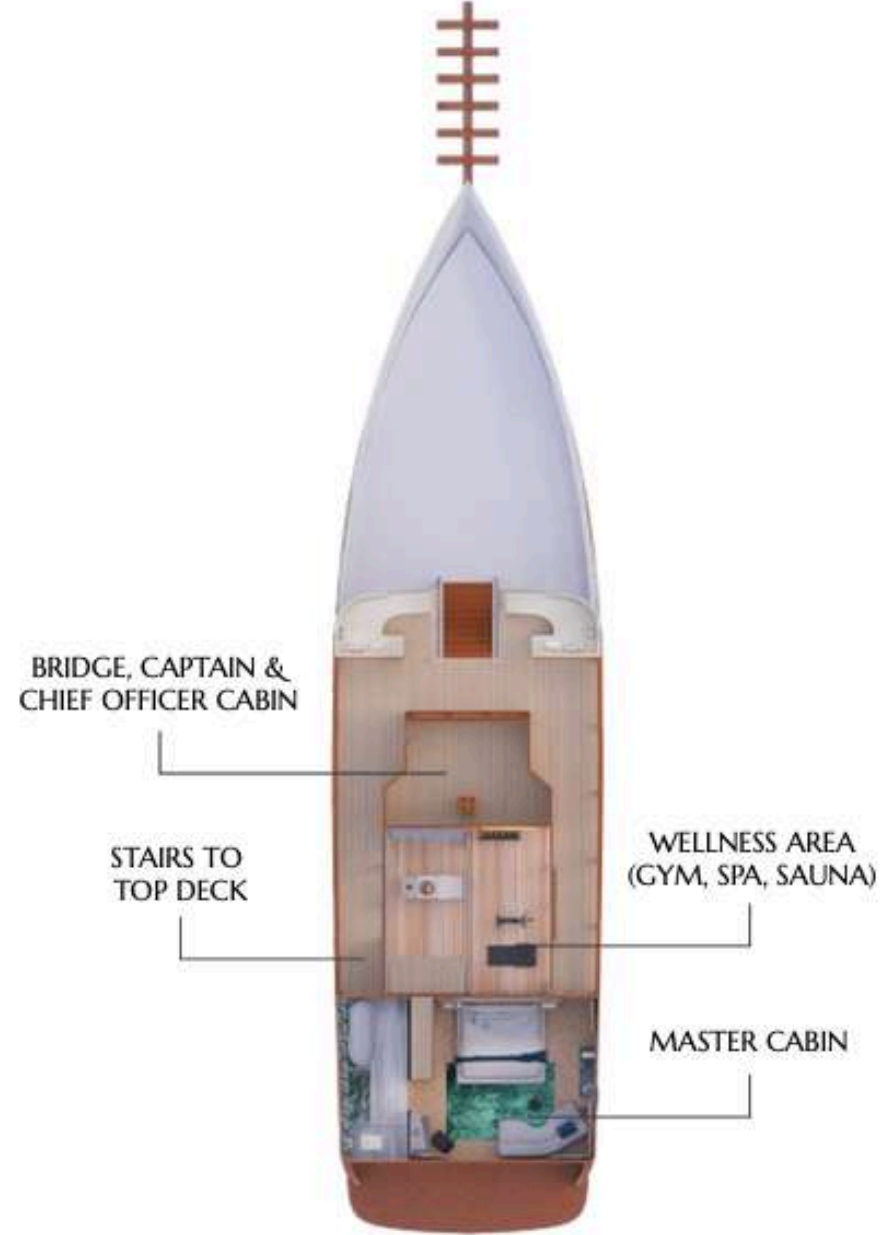
Toys & Facilities

Life Raft	Board games:
Exercise bike	• Codename (word)
Weights	• Who is it
Multi-function workout machine	• Rapid rumble
Boxing equipment	• Do you know really your family
Yoga mats	• UNO – Show them no mercy
Sauna	• UNO – Flip
Jacuzzi	• Monopoly deal
Massage bed	• Poker
PS5 Gaming console	• Chess

DECK LAYOUT



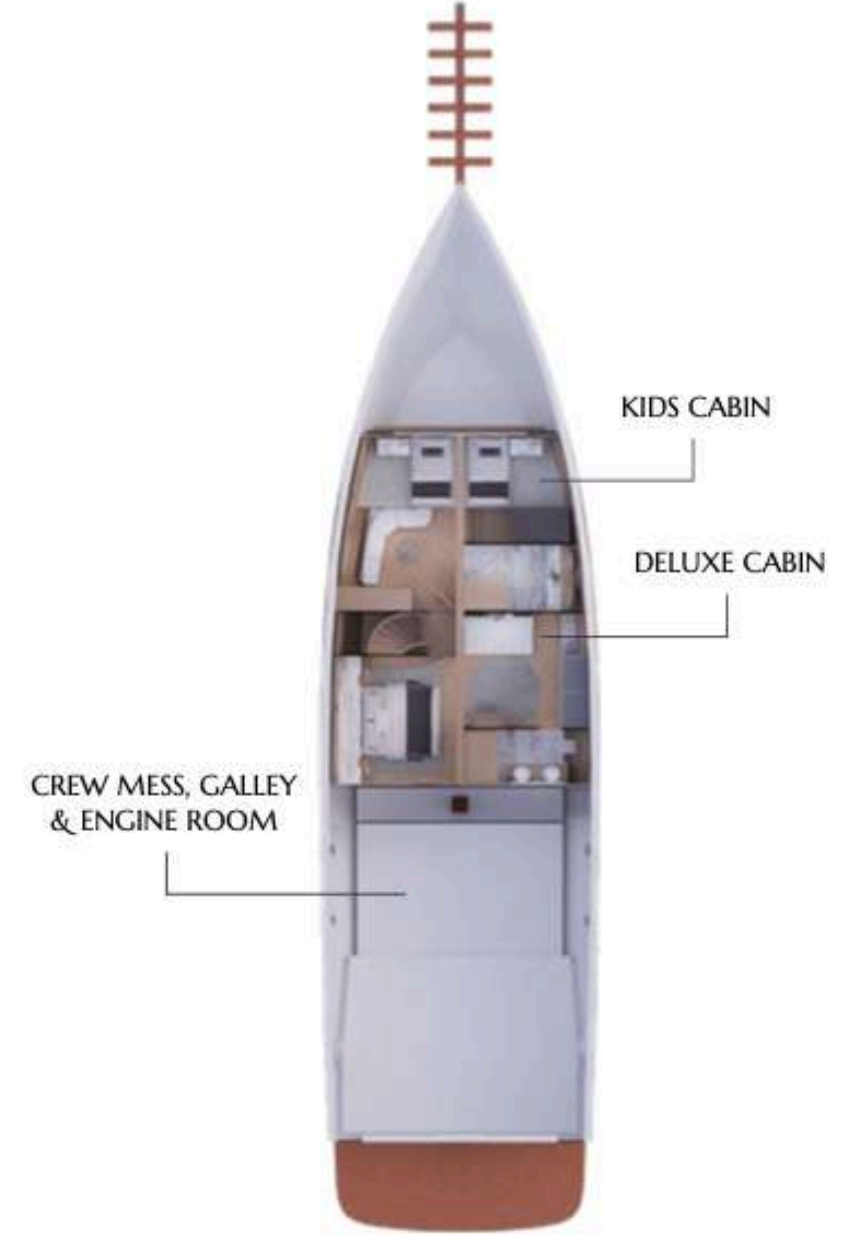
TOP DECK



BRIDGE DECK



MAIN DECK



LOWER DECK



THE YACHT

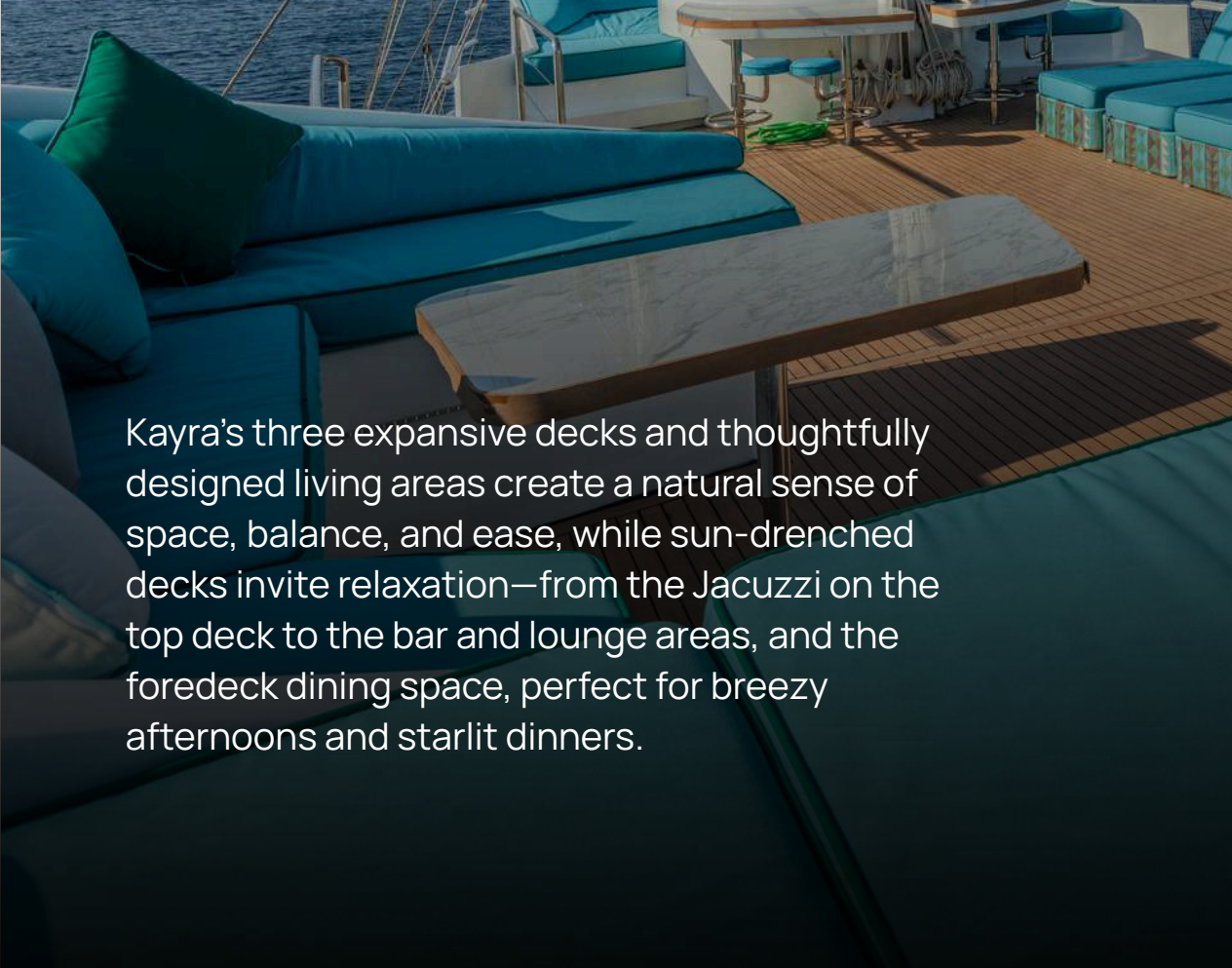
EXTERIOR



INTERIOR



OUTDOOR SPACES



Kayra's three expansive decks and thoughtfully designed living areas create a natural sense of space, balance, and ease, while sun-drenched decks invite relaxation—from the Jacuzzi on the top deck to the bar and lounge areas, and the foredeck dining space, perfect for breezy afternoons and starlit dinners.



THE CABINS



MASTER CABIN

Upper Deck • King Size Bed • Seaview Cabin • En-suite bathroom • 25m²

A refined, air-conditioned master cabin on the upper deck features a king-size bed, 270° panoramic views, and a private en-suite bathroom with bathtub, designed for comfort and privacy for two guests.



VIP CABIN

Main Deck • King Size Bed • Seaview Cabin • En-suite bathroom • 16m²

A spacious, air-conditioned VIP cabin on the main deck features a king-size bed, sea views, and an en-suite bathroom, offering refined comfort and privacy for two guests.



GUEST CABIN 1

Lower Deck • Double Bed • Porthole View • En-suite bathroom • 20m²

Beautiful guest cabin on the lower deck featuring a comfortable double bed, porthole views, air conditioning, and a private en-suite bathroom, ideal for two guests.



GUEST CABIN 2

Lower Deck • Double Twin • Porthole View • En-suite bathroom • 18m2

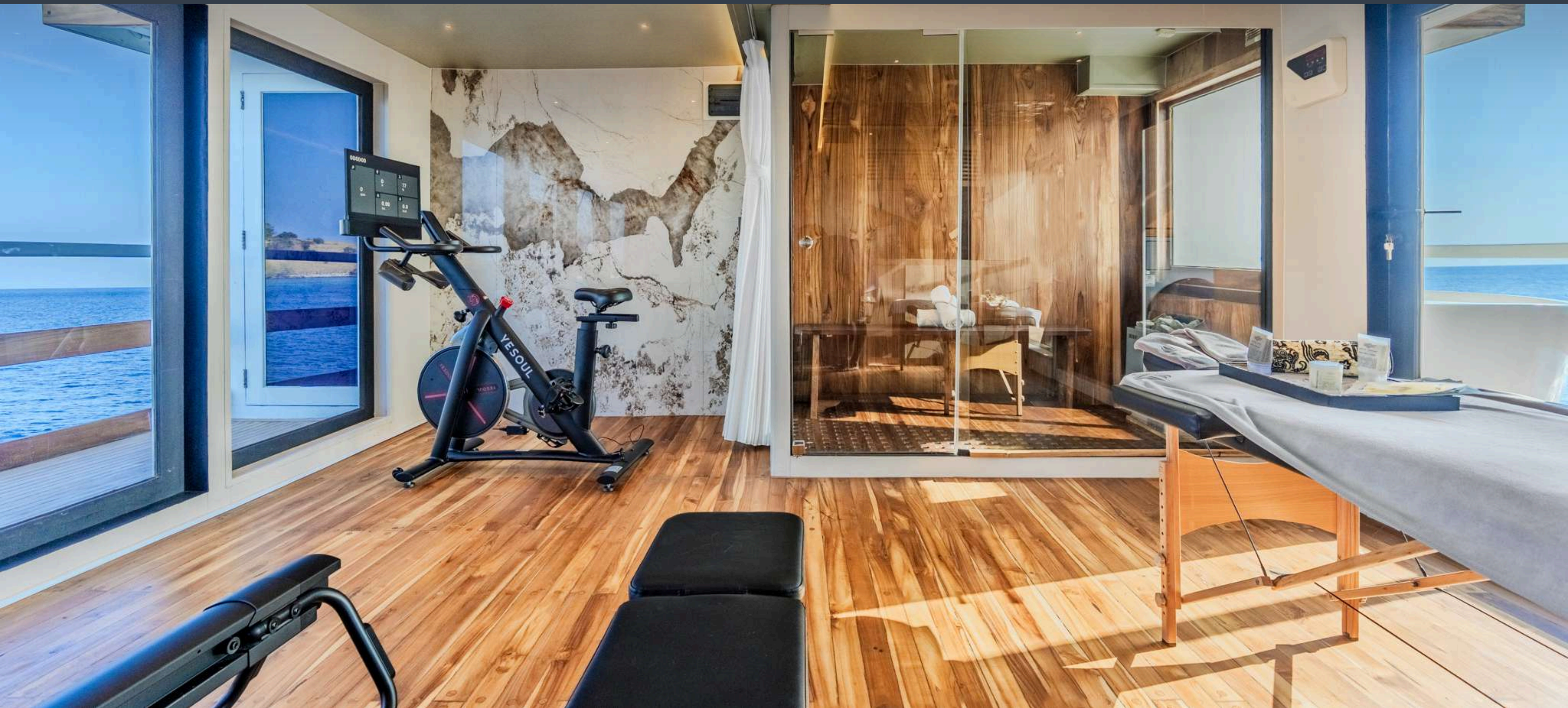
A twin-bed beautiful guest cabin featuring porthole views, air conditioning, and a private en-suite bathroom, comfortably accommodating two guests.



FACILITIES

GYM & SPA

Kayra's gym and spa blend movement and recovery in a calm, considered setting, featuring an exercise bike, free weights, a multifunction workout machine, boxing equipment, and yoga mats, alongside a sauna and dedicated massage bed for moments of deep restoration.



GYM



SPA & SAUNA

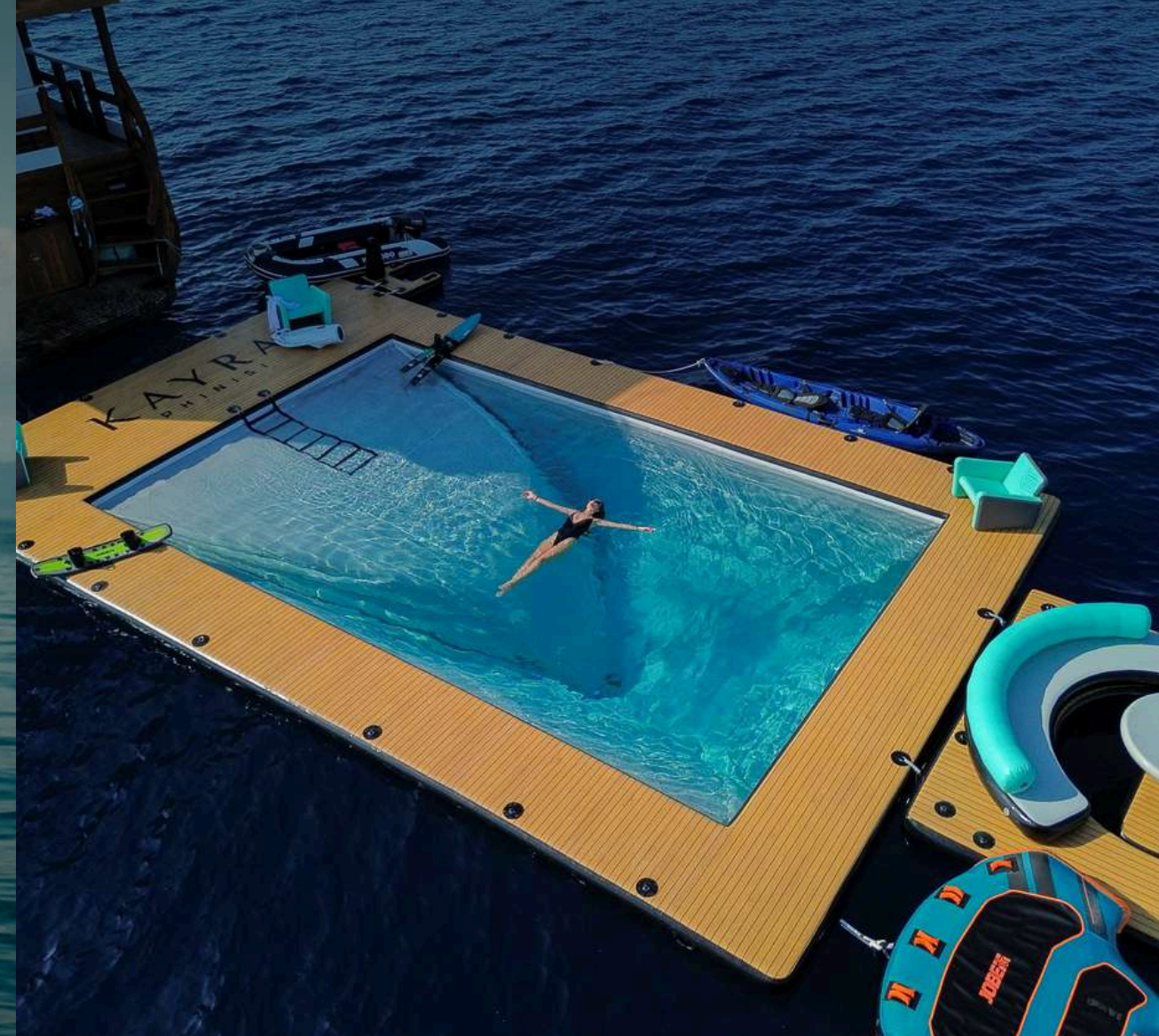


THE POOL

Kayra's floating pool creates a rare extension of life at sea—an inviting, open-water space designed for relaxed swimming, lounging, and effortless enjoyment, setting Kayra apart as the only phinisi to offer this distinctive floating experience.



THE POOL



TOYS

All included, all yours. Kayra is the most toy-packed charter yacht on the water in Indonesia, transforming every anchorage into a private watersports base. Every piece of equipment is fully operated by trained crew – so guests can focus purely on having fun.



TOYS





Destinations



KOMODO

Komodo National Park, a UNESCO World Heritage site, spans the iconic islands of Komodo, Padar, and Rinca, surrounded by a constellation of untouched islets. Celebrated as one of the world's premier diving destinations, its marine-rich waters reveal vibrant coral gardens and extraordinary biodiversity, while on land, the legendary Komodo dragons continue to roam these ancient islands.

KOMODO





SUMBAWA

Kayra cruises along the shores of Sumbawa, an island defined by raw beauty and vast open spaces. Wild and unspoiled, Sumbawa offers rare encounters with gentle giants as whale sharks glide through its waters, paired with hidden waterfalls found deep inland. Empty bays, rugged landscapes, and a sense of true remoteness define the experience.

SUMBAWA



INCLUDED ACTIVITIES

DIVING



SNORKELLING



HIKING



FISHING



BEACH SETUP



BEACH BBQ

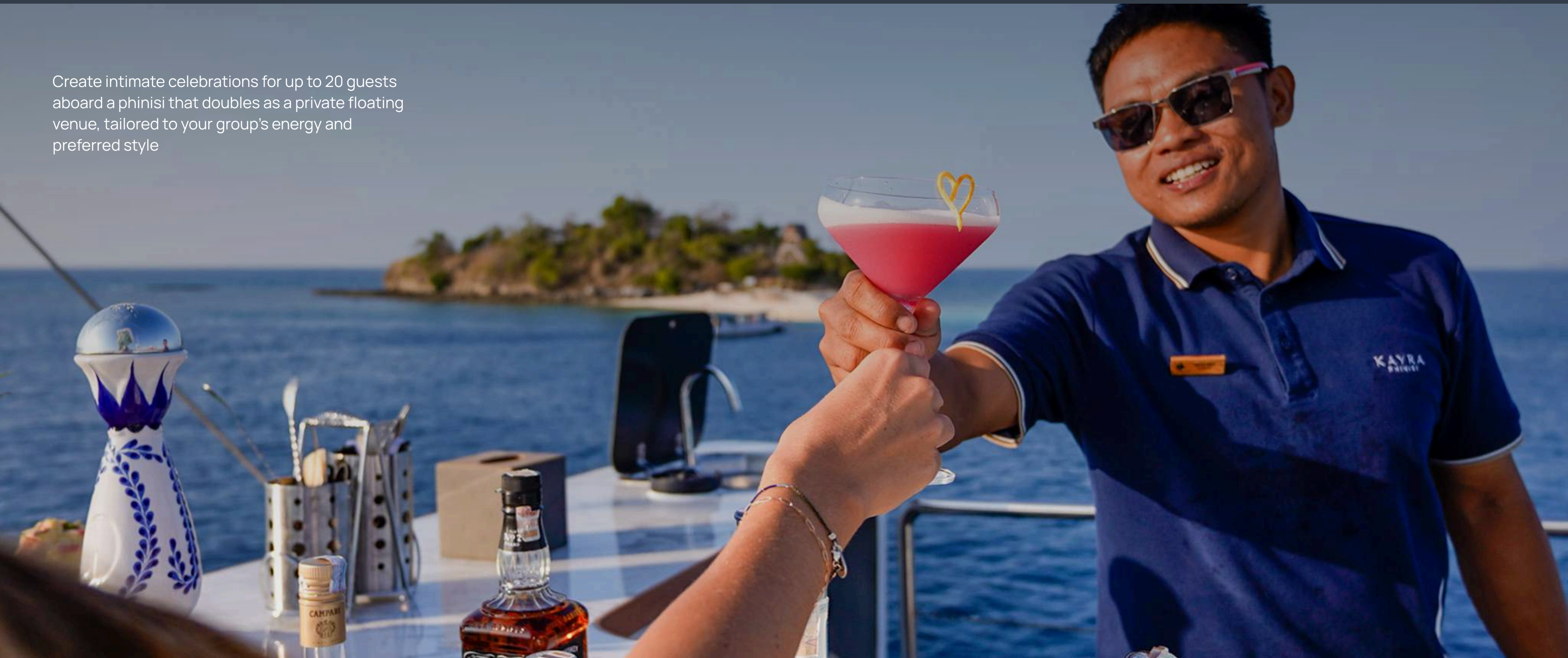


CULINARY



• EPIC CELEBRATIONS, LEGENDARY BACKDROPS

Create intimate celebrations for up to 20 guests aboard a phinisi that doubles as a private floating venue, tailored to your group's energy and preferred style



WHAT'S INCLUDED

KAYRA
PHINISI

Inclusions

- Full professional crew including Captain, Cruise Director, Dive Instructor, and Masseuse
- All gourmet meals and snacks
- Soft drinks and fresh juices
- Personal laundry service
- Use of onboard facilities:
- Sauna
- Gym
- Exercise bike, weights & yoga mats
- Board games
- Water toys & equipment:
- Stand Up Paddle Boards
- Wakeboard & Waterski
- Fishing Equipment
- Sea Kayaks
- Snorkeling & Diving Equipment (for certified divers)
- 1 Tender (RIB 10m – 200hp)
- All shore excursions and guide fees
- National Park permits and clearances
- Fuel charges
- Airport transfers
- 2 hours of massage therapy per day

Exclusions

- International and domestic airfares
- Excess baggage fees
- Passports, visas, and airport taxes
- Alcoholic beverages
- Additional spa and massage treatments beyond the included allowance
- Personal expenses and crew gratuities
- Travel and diving insurance (mandatory)
- Unscheduled excursions
- Drone usage fees (where applicable)
- Service charge for onboard consumption
- Extra hours of massage therapy: USD 60 / hour
- Anything not explicitly listed under Inclusions






KAYRA

PHINISI

WHERE THE FUN REALLY BEGINS

Reserve your escape now

 +62 813 5674 226

 hello@kayraphinisi.com

 kayraphinisi.com