

2023 Photo contest entry Bee Hut by Joanna Cowles Cleveland



5-minute program updates



Washington State
**Conservation
Commission**

All-Staff Meeting
9/13/23



Conservation Technical Assistance (CTA)

2023 Photo contest entry – Site Visit, Alexi Guddal

Jean Fike
Puget Sound RM
Jfike@SCC.WA.Gov
360-764-0533



Conservation Technical Assistance (CTA) = Implementation (IM)

Jean Fike
Puget Sound RM
Jfike@SCC.WA.Gov
360-764-0533

Elevator Pitch: What does program/collaboration do?

- Pays for staff time building relationships and developing potential projects – project funding does not generally pay for this
- Often used to pay all or part of manager's salary, sometimes other administrative staff, rent, utilities etc.
- Stable foundation of funding from which districts can leverage/span grant cycles/keep the doors open if a grant doesn't come through
- Meet obligations grants won't generally pay for (community engagement, elections, board support, hiring, audits, writing grant applications, fiscal software, website, staff training, HR compliance work, translating outreach materials, public records obligations, risk management etc.)
- Fund work that is important to local stakeholders but not to funders
- Whatever a district might need (fix the roof?) flexible funding can be a lifesaver!

Synergy with other SCC programs/collaborations?

When districts are developing a project for any SCC program, talking to potential cooperators, getting budget estimates, filling out the application– what is paying for their staff time?

When we ask for district input or feedback on a policy or programmatic change, what is paying for their staff time?

Upcoming events or future plans?

Asking for \$10 million additional funding for CTA in the supplemental session

This would be a game changer for some districts allowing them to add staff, help retain staff, stop robbing Peter to pay Paul

With unprecedented increase in PROJECT funding this biennium, the flexible, core funding CTA provides is more critical than ever- allowing districts to ramp up capacity to meet the challenge



Questions?



WA Shrubsteppe Restoration and Resiliency Initiative (WSRRI)

Photo: Washington's Shrubsteppe Landscape (photo credit: WDFW)

Allisa Carlson
South Central Regional Manager
acarlson@scc.wa.gov
360-480-6686

Elevator Pitch: What does program/collaboration do?



Highlights or accomplishments



NEAR TERM ACTIONS

- 21-23 Deferred Grazing - ~43,000 acres
- 21-23 Wildlife Friendly Fencing
 - 31 miles burned fence replaced
 - 5 miles burned fence retrofit
 - 5 miles burned removed
 - 40,000 acres virtual fence (4 projects)

LONG TERM STRATEGY

- Facilitators secured and advisory group formed
- Goals and objectives developed
- Actions under development - 10 focus tables
- Engagement with tribes and other groups
- Review process
- On track for March 2024 completion

Synergy with other SCC programs/collaborations?

- Farmland Protection and Land Access Program
- Forest Health and Community Wildfire Resiliency
- Natural Resource Investments
- Riparian Plant Propagation Program
- Sustainable Farms and Fields
- Voluntary Stewardship Program

Upcoming events or future plans?

- Wildlife Friendly Fencing Solicitation Open
- Deferred Grazing?
- WSRRI Governance
- Long-term Strategy
 - Writing, writing, writing
 - Review Period
 - Writing, writing, writing
 - March 2024 deadline, submit to legislature

Questions?





Office of Farmland Preservation (OFP)

Photo: Thornton Project, developed by NYCD, and is NW of Yakima.

Kate Delavan
*Office of Farmland Preservation
Coordinator*

What does OFP do?

- [RCW 89.10.010](#)
- Purchases and funds agricultural conservation easements
- Assists local governments and orgs on policy
- Transition and succession planning resources
- Data and analysis

Staffing and Partnerships

- 1 → 2 full time staff
 - Expanded programming, more responsive to requests, long-term visioning work
- Close partnerships with:
 - Conservation districts
 - Land trusts and other NGOs
 - State and federal agencies
 - County governments

SCC Easement Portfolio

Project Name	Funding Source	SCC's Interest	Partner	County	Acres	Easement Status
Davenport Cattle	WWRP	Primary holder	Central Klickitat CD	Klickitat	5,867	Under contract
Swauk Prairie	WWRP	Primary holder	Kittitas County CD	Kittitas	549	Under contract
Emerick	WWRP	Primary holder	North Yakima CD	Yakima	2,576	Under contract
Thornton Ranch	WWRP	Primary holder	North Yakima CD	Yakima	103	Completed
Hoch Farm	WWRP	Primary holder	Benton CD	Benton	26	Under contract
Lazy Cross Ranch	WWRP	Primary holder	Eastern Klickitat CD	Klickitat	2,852	Completed
Blain Ranch	WWRP	Primary holder	Eastern Klickitat CD	Klickitat	-	No longer moving forward
Schuster Ranch	WWRP	Primary holder	Central Klickitat CD	Klickitat	1,849	Completed
Stevenson Ranch	WWRP	Primary holder	North Yakima CD	Yakima	98	Completed
Lust Farm	Direct Appropriation	3rd Party Right of Enforcement	North Yakima CD	Yakima	281	Completed
Valdez Farm	FPLA	3rd Party Right of Enforcement	Whidbey Camano Land Trust	Island	156	Under contract
Schmid Farm	FPLA	3rd Party Right of Enforcement	Columbia Land Trust	Klickitat	40	Completed
Beaver Valley Farm	FPLA	3rd Party Right of Enforcement	Jefferson Land Trust	Jefferson	39	Under contract
Completed Projects		6	Total Completed Acreage		5,223	
Total # of Projects		12	Total Acreage		14,436	

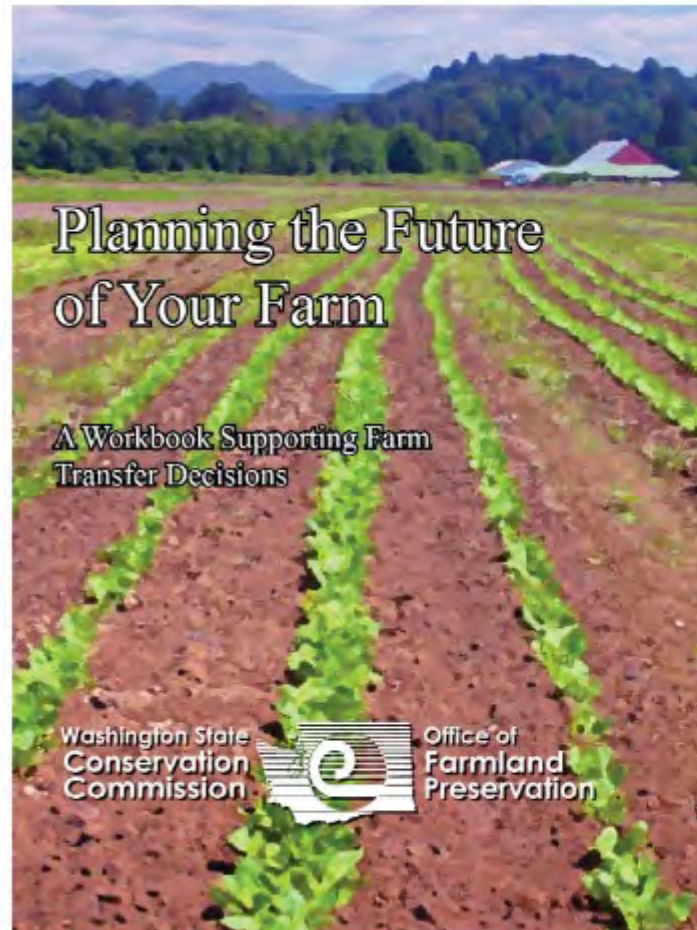
FPLA

- Launched August 2022
- First project completed August 2023
- Schmid Dairy Farm
– 40 acres in Trout Lake



Transition & Succession Planning

- Workbook
- Survey
- Legal CLE



Special Projects

- Current projects:
 - Legal analysis of easement affordability provisions
 - Urban agriculture study (HB 1552)

Questions?





Food Policy Forum (FPF)

Photo: Food Systems Support Grant, Colibri Farm

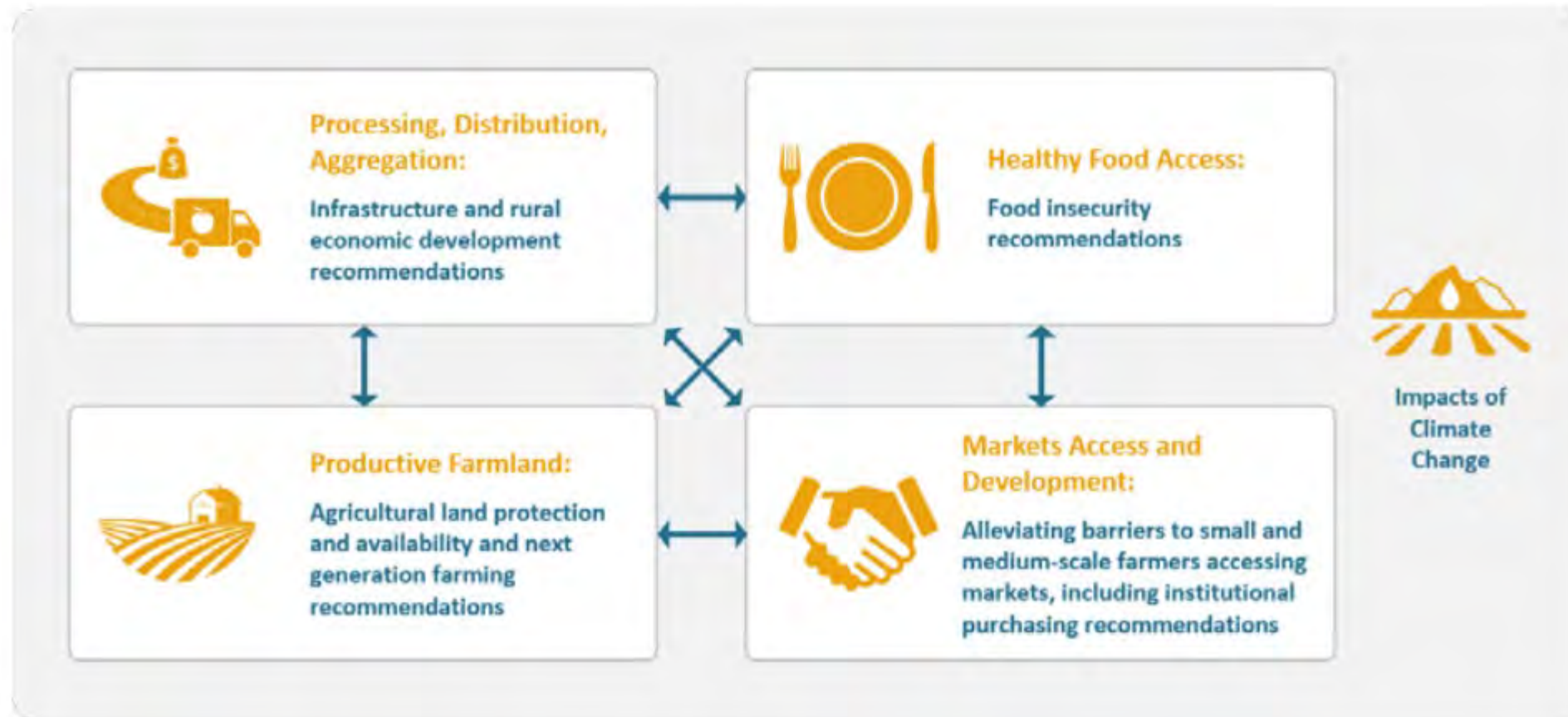
Karla Heinitz
Policy Assistant

Kate Delavan
*Office of Farmland Preservation
Coordinator*

Elevator Pitch: What does Food Policy Forum do?

- Created via proviso in 2016 → [RCW 89.50](#)
- Co-convened by SCC and WSDA
- 40+ members
- Recommendations to improve the food system(s) in Washington
- Weekly co-leads calls, small team calls, every other month full Forum meetings

Food Systems Lens



Reports and Resources

Reports

- [FPF Farm Bill Recommendations Report \(01/2023\)](#)
- [FPF Land Use Policy Solutions to Stem Ag Land Loss \(12/2022\)](#)
- [2021 Food Policy Forum Recommendations to Legislature \(10/2021\)](#)
- [2020 Early Action Implementation Report \(08/2020\)](#)
- [2019 Food Policy Forum Recommendations to Legislature \(06/2019\)](#)
- [2019 Progress Report to Legislature \(02/2019\)](#)
- [2017 Food Policy Forum Report to Legislature \(10/2017\)](#)

Resources

- [DRAFT: State of Food System in Washington \(04/2023\)](#)
- [Food Policy Forum State Brand/Marketing Program for Washington](#)
- [Food Policy Forum Equity Filter - June 2021](#)
- [Washington State Department of Agriculture Farming Support](#)
- [Food Policy Resources, Johns Hopkins Center for a Livable Future](#)

Looking Ahead

- Diversifying voices
- Administrative chair
- Land-use policies to stem ag land loss
- CCA investments in ag
- Water availability
- Coordination with local food policy councils

Questions?





Riparian Plant Propagation Program (RPPP)

Photo: Cultivation site in Pend Oreille

B'Elanna Rhodehamel
RPPP Manager
brhodehamel@scc.wa.gov
564-669-4638

Sep 13, 2023

What does this program do?

RPPP is a grant program with a 1.3 million annual budget and a goal to increase the availability of native trees/shrubs for riparian restoration in support of salmon recovery.

Program Layers:

Propagation:

Contract grow with nurseries over this biennium (Sept 2023 – June 2025).

- Fund nurseries to provide plants for restoration projects.
- Possible contract extension of up to an additional 2 years.

Cultivation:

Annual funding to increase conservation district holding sites.

- Expansion, creation, or maintenance.
- Purchase plants for cultivation.

Restoration:

Matching plants with restoration groups for riparian restoration projects.

- Includes: districts, non-profits, state/federal agencies, tribes, counties.
- Plant Needs Form.

Highlights from FY24



Snohomish CD \$82,188.25

This project supports maintenance of 1,650 plants and supports the purchase of additional plants in partnership with Snohomish county. This district is continuing improvement to the two holding sites by adding seed banks and cutting blocks.

Clark CD \$155,903.95

This project is in partnership with the Lower Columbia Fish Enhancement Group to purchase plants and to maintain previously funded holding sites. This district also plans to continue expansion of 3 of their holding sites: Toutle Lake High School in Toutle, WA, the Center for Agriculture, Science, and Environmental Education (CASEE), and Fort Vancouver High School by adding live stake cultivation.

North Yakima CD \$24,875.97

NYCD serves as a regional hub and was awarded funds to maintain 12,000 riparian trees/shrubs at the CD owned holding site.

Pend Oreille CD \$24,000

This project supports maintenance of ~1000 plants at the Indian Creek Community Forest and Native Plant Nursery in partnership with the Kalispel Tribe of Indians. This district is also purchasing additional plants.

Palouse CD \$47,742.24

This project is in partnership with the Washington State University Horticulture to purchase plants and create a new holding site. This district plans to install fencing, raptor posts, an irrigation system, and a shed.

Spokane CD \$107,584.42

This project supports maintenance of 7,600 plants at the SCD Conservation Campus, which includes large scale organic composting. This district is continuing improvement of the holding site by adding concrete footing to their greenhouse.

Columbia CD \$62,620

This project supports maintenance of 1400 trees/shrubs in partnership with Dayton High School with an educational program for students. This district is also purchasing more trees/shrubs and improving their greenhouse irrigation system.

Jefferson CD \$50,344.46

This project is in partnership with the North Olympic Salmon Coalition (NOSC) to purchase trees/shrubs and to expand the NOSC Native Plant Nursery. The district plans to include an for growing stock for propagation and live stakes.

Upcoming events

Contract grow with nurseries over this biennium (Sep – June 30th, 2025)

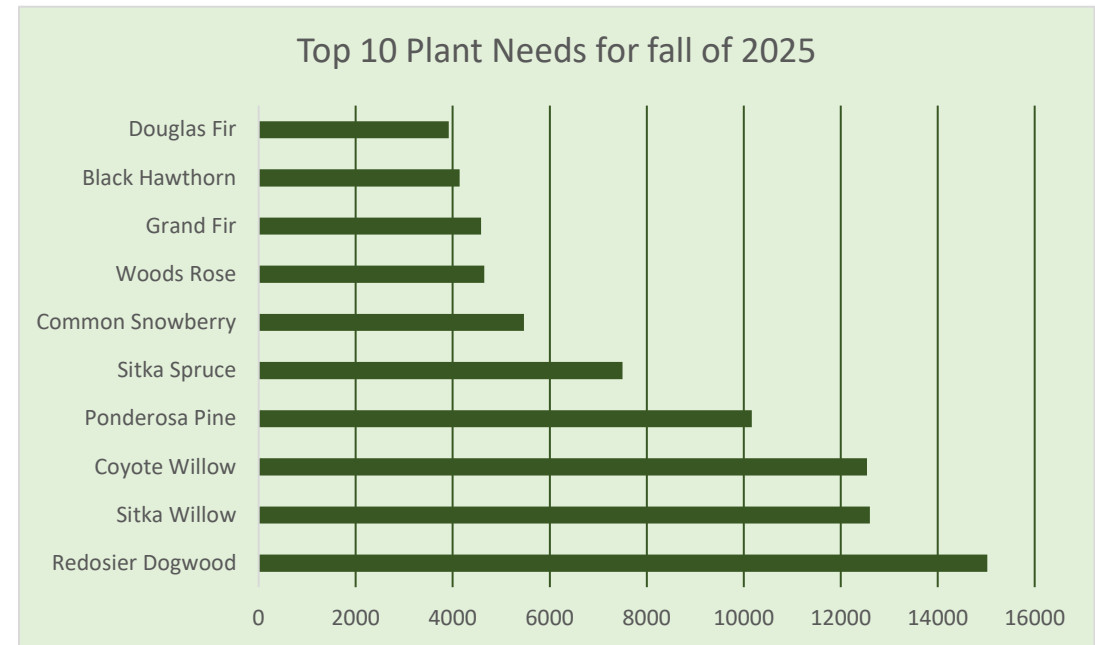
- 9 nurseries awarded

Plant Needs Form for restoration groups:

- 7 CD's
- 2 Fish Enhancement Groups
- 2 Cities
- 2 Other non-profits
- 1 School

Next steps for RPPP:

- Place orders with nurseries.
- Possible additional RFP for districts.
- Site visits scheduled.



Total Plants Requested: 182,892

Questions?





Sustainable Farms and Fields (SFF)

Photo: Compost spreader funded by SFF for use by farmers participating in King County's Farmland Leasing Program. Courtesy of Richard Martin, King County.

Karen Hills
Program Manager
khills@scc.wa.gov
564-669-3292

Elevator Pitch: What does program/collaboration do?

Sustainable Farms and Fields is a grant program with the primary goal of increase climate-smart practices – e.g., those that increase carbon sequestration and reduce GHG emissions - on farmland, rangeland, and aquaculture tidelands.

SFF incentivizes producers by providing technical and financial support to improve farming practices through conservation districts and other public entities.

Through SFF, farmers and ranchers may receive free services — such as on-farm consultations, climate-smart farm plans, and other technical expertise — and financial assistance to help cover the cost of eligible projects, equipment, seeds for cover crops, and other expenses.



Okanogan CD



Stevens County CD



Lewis CD



Asotin CD

50 projects completed in FY23 as a part of the Sustainable Farms and Fields Program



Technical Assistance



Cost Share



Demonstration

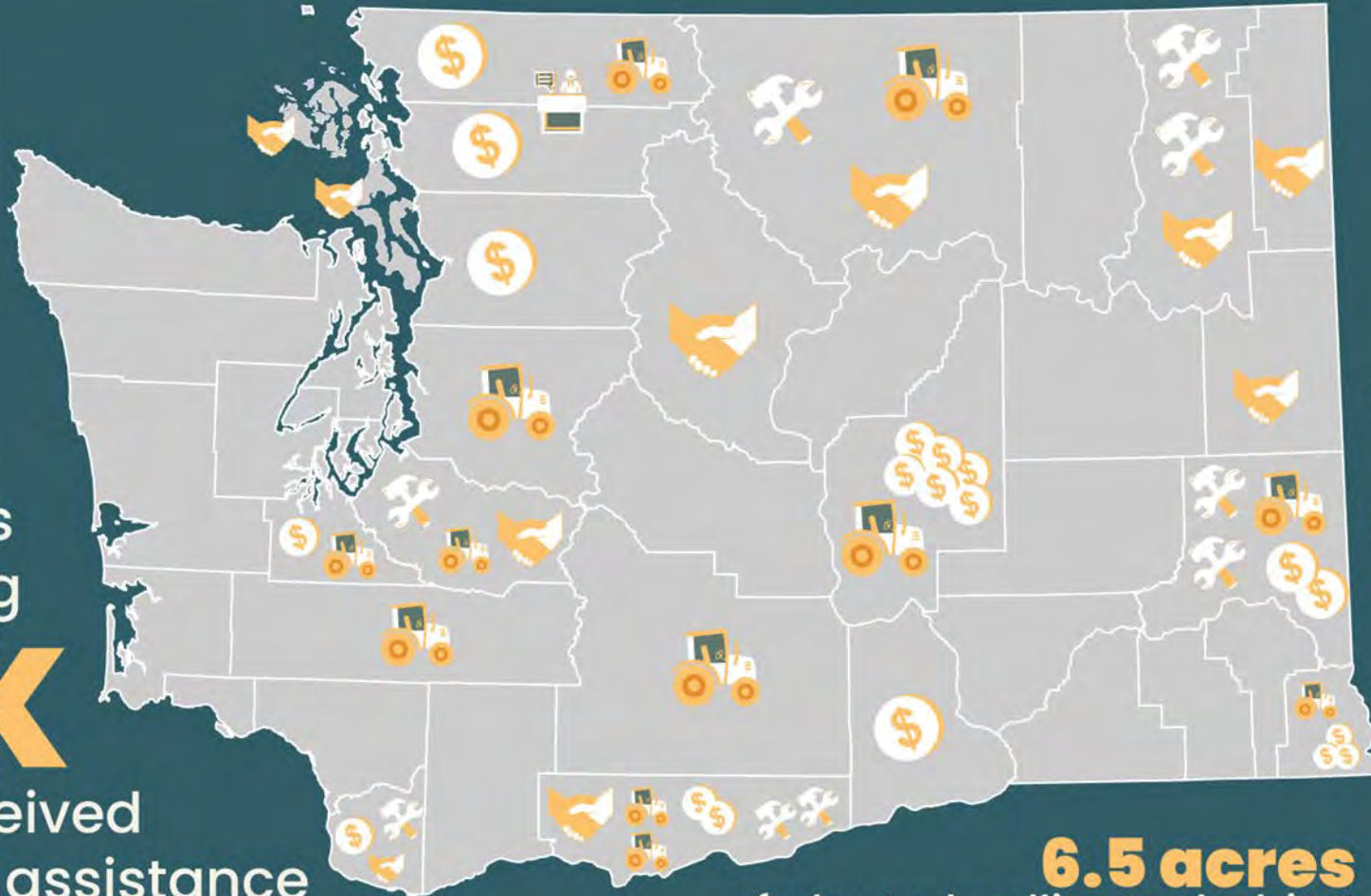


Materials and Supplies



Equipment Sharing

207 producers managing 80K acres received technical assistance



6.5 acres of planted pollinator habitat

An estimated 200 producers anticipated to use rental equipment on 30K acres

Synergy with other SCC programs/collaborations?

Lots of relation to other SCC programs in terms of practices funded

SFF is part of the Washington Soil Health Initiative, a partnership between SCC, WSDA, WSU



Upcoming events or future plans?

Short term:

- Continue to work with CD partners on developing/refining carbon farm plan template for use in Washington.
- Next release of SFF funding this winter!
- Work with climate-smart livestock management advisory committee on development of RFPs for research and demonstration projects, dairy anaerobic digesters, alternative manure management (expected release in Jan.)

Longer term:

- Looking for more ways to incorporate energy efficiency projects/practices into the program.



Questions?



Riparian Grant Program

Photo: Riparian planting in Whatcom County

Alison Halpern
Acting Policy Director
ahalpern@scc.wa.gov
360-280-5556

What does the Riparian Grant Program do?

“What do we want?!?”

“Variable width, continuous riparian habitat!!!!”

“When do we want it?!?”

“As soon as the guidelines have been adopted!!!!”



Highlights of the Riparian Grant Program

- Historically high level of funding (\$25 million)
- Allows maintenance of planted trees and shrubs (5 years), plus longer maintenance for riparian habitat (up to 10 years) *pending funding availability
- Tiered incentive component built in
- Collaborative process to develop guidelines



Synergy with other SCC programs

- Riparian Grant Program's success tied to the Riparian Plant Propagation Program
- Complements CREP



Upcoming events

- Series of Riparian Grant Program work group meetings to develop draft guidelines, led by Shana and Alison
- More inclusive advisory committee (and anyone who is interested) will be able to track progress and weigh in
- Goal is for guidelines to be adopted at January meeting





Questions?

An aerial photograph showing a stream flowing through a landscape. The stream is dark and narrow, winding through a field of green and brown grass. Several large evergreen trees are scattered throughout the scene, particularly on the right side. In the background, a road and more trees are visible. The overall scene is a natural, somewhat rural setting.

Conservation Reserve Enhancement Program (CREP)

2023 Photo contest entry: Plantings from Above, Natalie Otto

Brian Cochran
Habitat and Monitoring Coordinator



Voluntary Stewardship Program (VSP)

Photo: Foster Creek, virtual fencing

Bill Eller
VSP Coordinator

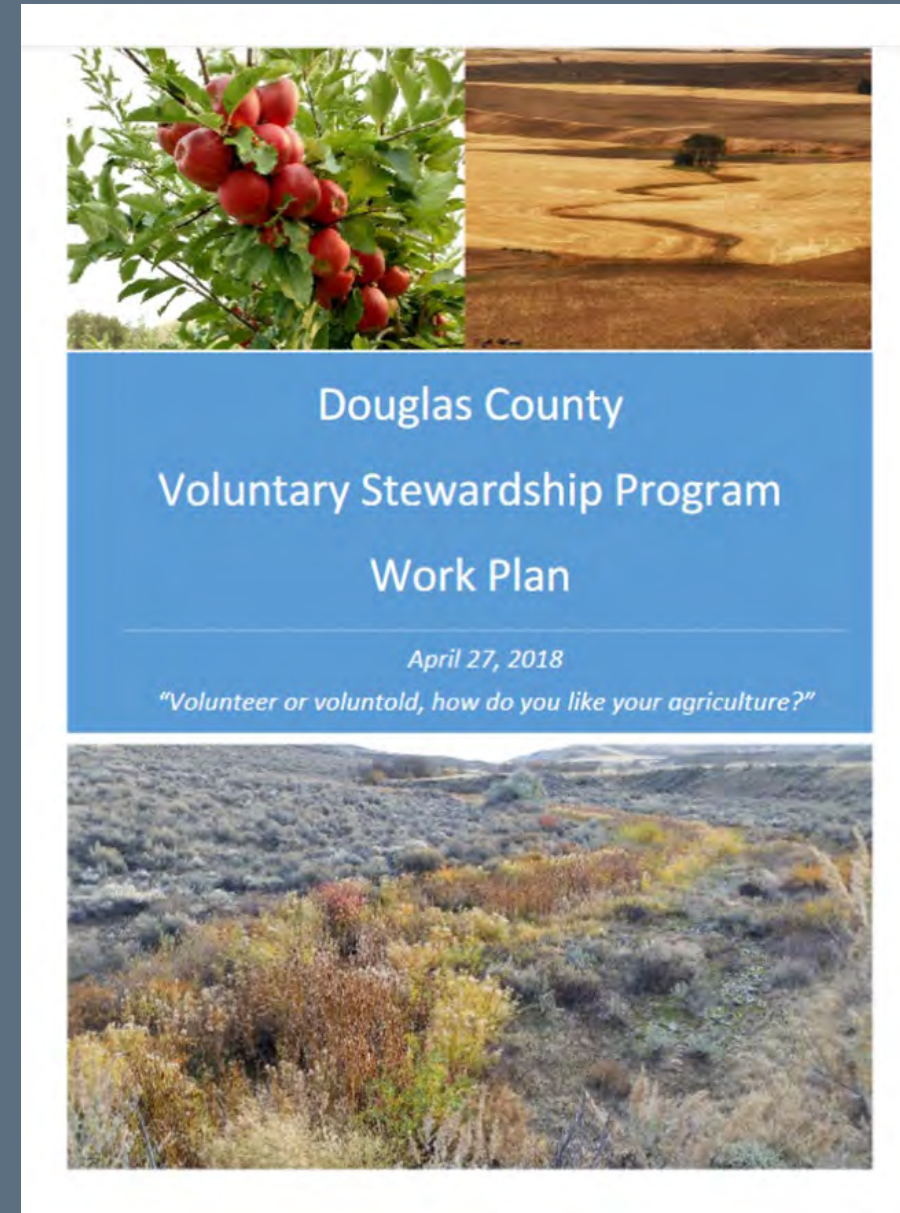
The Voluntary Stewardship Program (VSP)

- Protects critical areas (wetlands, frequently flooded areas, aquifer recharge areas, geologically hazardous areas & fish and wildlife habitats) while maintaining agricultural viability
- An alternative to the Growth Management Act – voluntary, not regulatory
- 27 counties have opted-in to VSP
- Each county creates a county work group to provide strategic direction for implementation
- Each county has an approved county-wide VSP work plan with goals & benchmarks
- Protection is provided at the watershed scale, not at the parcel scale
- County-wide plans approved after 3 years of planning, using 2011 as the baseline date



The Voluntary Stewardship Program (VSP)

- 26 of 27 VSP counties use their local CDs to administer VSP, except for Skagit
- VSP succeeds when the counties can get enough participants installing BMPs to meet the county work plan goals & benchmarks
- Participation typically occurs through Individual Stewardship Plans (ISP) or NRCS farm plans
- Counties (locals) decide which BMPs will meet WP goal and benchmarks, not the state
- Monitoring takes place at the watershed scale, not the parcel scale
- 2-year status reports – not reviewed & evaluated
- 5-year review & evaluation reports – reviewed & evaluated by the Technical Panel, with consultation by the Statewide Advisory Committee, SCC executive director decides



The Voluntary Stewardship Program (VSP) - Roles

- SCC – statewide administration of VSP
- Counties – opt-in, choose which watersheds in county are in, stand up work groups, ultimately responsible for VSP success
- County work groups – volunteers, local members of community, diverse stakeholders, create and implement county-wide work plan, adaptively manage that plan
- Technical service providers (CDs) – typically are employed by the county work groups for the day-to-day implementation of the county-wide plan, facilitate work group meetings, conduct monitoring, compile reports
- Technical Panel – approves county-wide work plan, reviews & evaluates 5-year reports, made up of WSDA, ECY, WDFW, SCC staff
- Statewide Advisory Committee – advises SCC, county, agriculture, environmental, and tribal (invited) representation



Prepared by:

Work Group

Alan Thomson, Whitman County Planning Director
Art Swannack, Whitman County Commissioner
David Lange, Whitman Conservation District
David L Swannack, Agricultural Producer
Jeff Pittmann, Whitman County Farm Bureau
Joan Folwell, Palouse Conservation District, Palouse Prairie Foundation
John Pearson, Agricultural Producer
Jon Jones, Agricultural Producer
Kim Weerts, Whitman County Cattlemen's Association
Larry Cochran, Palouse Conservation District
Nancy Belsby, Whitman County Water Conservancy Board
Tracy Eriksen, Agricultural Producer

Work Group Advisory Members

Evan Sheffels, Washington State Farm Bureau (Alternate)
Jason Kunz, Washington Department of Fish and Wildlife
John Stuhlmiller, Washington State Farm Bureau (Primary)

Anchor QEA, LLC for Whitman County

Funded by:

Washington State Conservation Commission
as directed by the Washington State Legislature (RCW 36.70A.700)

The Voluntary Stewardship Program (VSP) - Timeline

- July 20, 2011 – VSP created
- July-Dec 2011 – Counties opt-in
- 2015 – VSP funded, counties accept funds (determines reporting dates)
- 2016-19 – Work groups created, create county-wide work plans, approved by TP & SCC ED
- Implementation after approval
- 2020-2021 – 1st 5-year report due
 - TP & SCC ED reviewed & evaluated all 27 5-year (5YR) reports, all successfully on track to meet county-wide work plan goals & benchmarks
- Implementation after 5YR review
- 2025-2026 – 2nd 5YR report due

	Chelan & Thurston – July 20, 2024
Kittitas – November 17, 2025 Mason – November 24, 2025 Garfield – November 30, 2025	
	Asotin & Grant – December 14, 2025 San Juan – December 20, 2025 Cowlitz & Pacific – December 22, 2025 Okanogan – December 28, 2025
Benton – January 12, 2026 Skagit & Whitman – January 19, 2026 Columbia – January 20, 2026 Yakima – January 21, 2026 Douglas – January 22, 2026	
	Pend Oreille – February 2, 2026 Franklin – February 24, 2026
Walla Walla – March 7, 2026 Stevens – March 10, 2026 Ferry – March 14, 2026 Grays Harbor & Lincoln – March 21, 2026	
	Lewis – April 18, 2026 Spokane – April 22, 2026
Adams – May 23, 2026	

The Voluntary Stewardship Program (VSP) – 5-Year Report

- Per the VSP statute, counties must demonstrate that they are meeting their county-wide work plan goals and benchmarks every five years (the “5YR report”).
- SCC created an Access database for counties to make their case that they are meeting those goals and benchmarks.
- The database collects data on each work plan goal and benchmark, which includes monitoring the effects of the protection efforts on the critical areas.
- SCC ED must concur with the county work group’s assertion that it is meeting its goals and benchmarks, or else county could fail out



Washington State Conservation Commission

VSP

Voluntary Stewardship Program (VSP) Five-Year Report

Please complete this form to comply with your requirement under RCW 36.70A.720 (2) (b) and (c) to report to the to the Conservation Commission Director on whether your county VSP work plan has met its protection and enhancement goals and benchmarks.

In order for the Director of the Conservation Commission to concur with the county work group in their determination of whether or not the county work group has met the work plan's protection and enhancement goals and benchmarks, the Director will need information on the goals, benchmarks, monitoring and adaptive management of the work plan.

For the county as a whole, or for each participating watershed in the county (as per how your county chose to opt-in to VSP), complete the following template for each of the five critical areas:

- Wetlands
- Areas with a critical recharging effect on aquifers used for potable water
- Fish and wildlife habitat conservation areas
- Frequently flooded areas
- Geologically hazardous areas

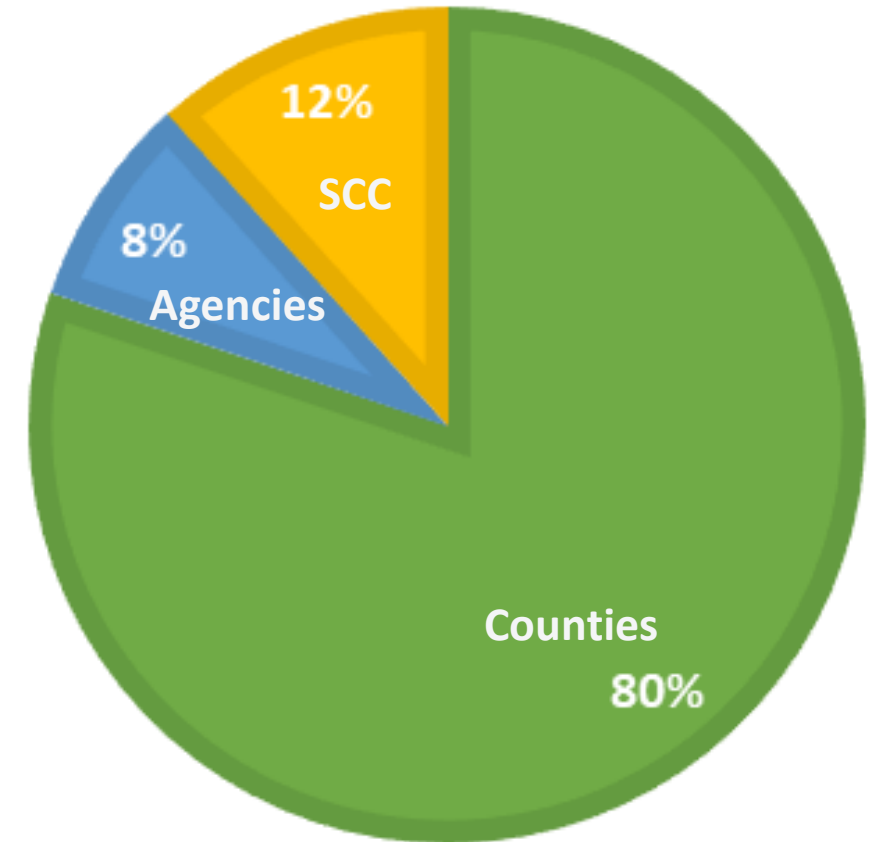
Please make sure to include each goal and each benchmark in your work plan. The VSP statute uses the terms "goal" and "benchmark." If your work plan did not use this language, be sure to specify the equivalent language that your work plan used and submit the report using the equivalent definitions identified in Section IV of the Five-Year Report Guidance. Answers submitted through the five-year report form should be brief, succinct, and directly answer the question posed.

VSP Operating Budget

- \$10,332,000 for FY 23-25 in SCC operating budget
- \$8,279,000 for counties, including
 - \$1,420,000 for monitoring
 - \$379,000 for new opt-in counties
- Prior years, for the biennium:
 - FY 15-17: \$7,290,000 - \$270,000/county - planning
 - FY 17-19: \$5,940,000 - \$220,000/county - planning
 - FY 19-21: \$6,480,000 - \$240,000/county - implementation
 - FY 21-23: \$6,345,000 - \$235,000/county - implementation
 - FY 23-25: \$6,480,000 - \$240,000/county - implementation
- Counties must meet VSP statutory obligations and SCC contractual deliverables, including running the work group, outreach, monitoring, reporting, etc.
 - SCC recommends 1 FTE @ each county

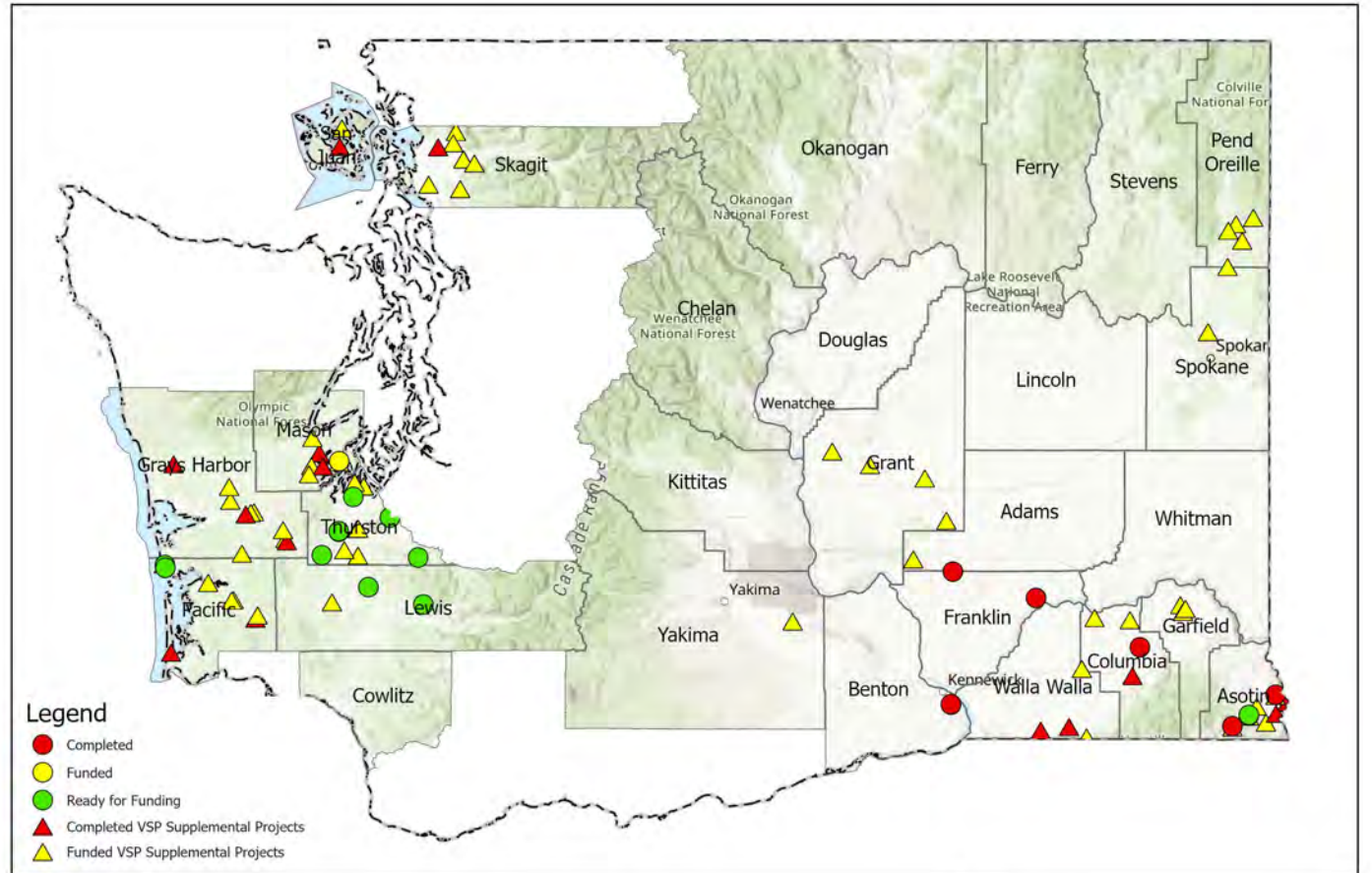
VSP FY 21-23 Budget Allocation

80% Counties (\$8,279,000)
12% SCC (\$1,203,000)
8% State Agencies (\$850,000)



VSP Capital Budget

- Never been capital funds for VSP cost-share
- 2022 Legislative session - first time received \$3M
- Created VSP cost-share guidelines
- From Sept 2022 – Jun 2023, allocated \$2.2M
- For FY 23-25 – asked for & received a new \$3M
- From July – Sept 2023, allocated 100% of the \$3M
- ~90 BMPs with ~47 different landowners
- Skagit County \$1M in cost-share



0 12.5 25 50 75 100 Miles



Prepared by Brian Cochrane
May 9, 2023
Washington Conservation Commission

SSB 5353 VSP Legislation

- Re-opens VSP to those 12 counties who originally declined to opt-in another chance to opt-in
- No deadline now to opt-in
- Deadlines are set after the county acknowledges receipt of funds, but before receipt of funds can happen, the county must
 - confer with stakeholders,
 - pass the ordinance,
 - send the ordinance to the SCC,
 - the SCC responds to the county with a contract, and
 - the contract is signed by both

CERTIFICATION OF ENROLLMENT
SUBSTITUTE SENATE BILL 5353

Chapter 187, Laws of 2023

88th Legislature
2023 Regular Session

VOLUNTARY STEWARDSHIP PROGRAM—COUNTY PARTICIPATION

EFFECTIVE DATE: July 23, 2023

Passed by the Senate March 2, 2023
Yea 19 Nays 0

DEBBY BUCK
President of the Senate

Passed by the House April 12, 2023
Yea 14 Nays 3

CHRIS JONES
Speaker of the House of Representatives

Approved April 23, 2023 8:48 PM

JAY INSLEY
Governor of the State of Washington

CERTIFICATE

I, Sarah Baskette, Secretary of the Senate of the State of Washington, do hereby certify that the attached is **SUBSTITUTE SENATE BILL 5353** as passed by the Senate and the House of Representatives on the dates herein set forth.

SARAH BASKETTE
Secretary

FILED
April 24, 2023

Secretary of State
State of Washington



VSP Day-to-Day

- Quarterly joint meetings of the Statewide Advisory Committee & Technical Panel
 - Counties divided into regions (Western, Central, NE, SE)
 - Counties invited to dialogue with SAC & TP and prepare for their 5YR report
 - A direct result of county/CD feedback during 2020-2021 first 5YR rpt
- Monthly Technical Panel agency meetings (WDFW, WSDA, ECY)
- Monthly VSP newsletter – 800 subscribers
- Monthly internal SCC VSP staff meeting
- Monthly capital funding review committee meetings
- Quarterly work group meetings (27 counties)
- Quarterly monitoring trainings (opportunity to learn monitoring skills)
- Quarterly monitoring symposiums (opportunity to network, share ideas)
- Annual new staff, budget, contract, voucher & cost-share trainings
- Presentations at WADE, WSAC (convention & new commissioner training), planner’s forums, other events

2023 meetings	Location	Region	Counties
12-Jan-23	Lacey	Western	San Juan
			Skagit
			Mason
			Thurston
			Grays
			Pacific
			Lewis
11-May-23	Ellensburg	Central	Cowlitz
			Okanogan
			Chelan
			Douglas
			Kittitas
			Yakima
			Adams
13-Jul-23	Spokane	North East	Grant
			Ferry
			Pend Oreille
12-Oct-23	Pullman	South East	Spokane
			Lincoln
			Stevens
			Benton
			Franklin
			Columbia
			Walla Walla
			Whitman
Garfield			
Asotin			



Questions!

Bill Eller, VSP Program Coordinator

beller@scc.wa.gov

(509) 385-7512



Washington State
Conservation Commission



Irrigation Efficiencies for Water Resources

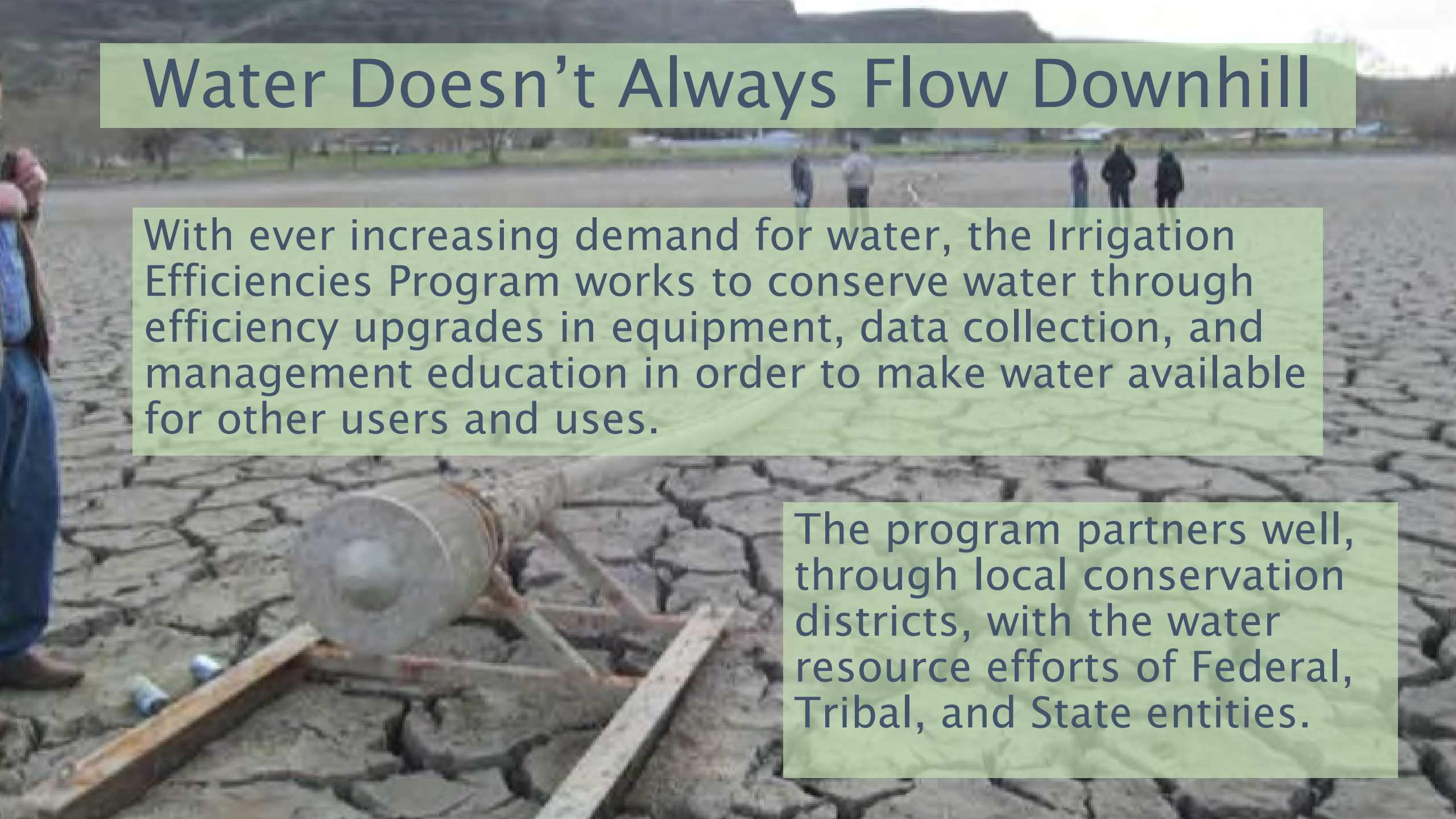
Photo: Drip irrigated grapes in the Lower Yakima River Basin

Jon Culp
Water Resources Program Manager
jculp@scc.wa.gov
509-385-7509

Water Doesn't Always Flow Downhill

With ever increasing demand for water, the Irrigation Efficiencies Program works to conserve water through efficiency upgrades in equipment, data collection, and management education in order to make water available for other users and uses.

The program partners well, through local conservation districts, with the water resource efforts of Federal, Tribal, and State entities.



Now that's what I call high quality H₂O

Program has saved 18,293 acre feet of water per year

One acre foot of water is about the area of a football field under a foot of water

Program has saved 76 cubic feet per second of instantaneous flow

One cubic foot of water equals 7.5 gallons


Enhanced 25 different tributaries in 10 counties

Plays Well With Others



Natural Resource Investment
Voluntary Stewardship Program
Salmon and Riparian Grants
Office of Farmland Preservation

Happily Ever After...

A large center pivot irrigation system is shown in operation over a lush green field. The system consists of a long metal truss structure supported by multiple wheels, with numerous nozzles spraying water onto the crops. The background features large trees and a clear blue sky with some clouds.

A shift in program focus from instream flow enhancement to Water For All. New program guidelines are in process.

Adding low-cost/small scale project option to increase program reach.

Questions?



2023 Photo contest entry Bee Hut by Joanna Cowles Cleveland



THANK YOU!