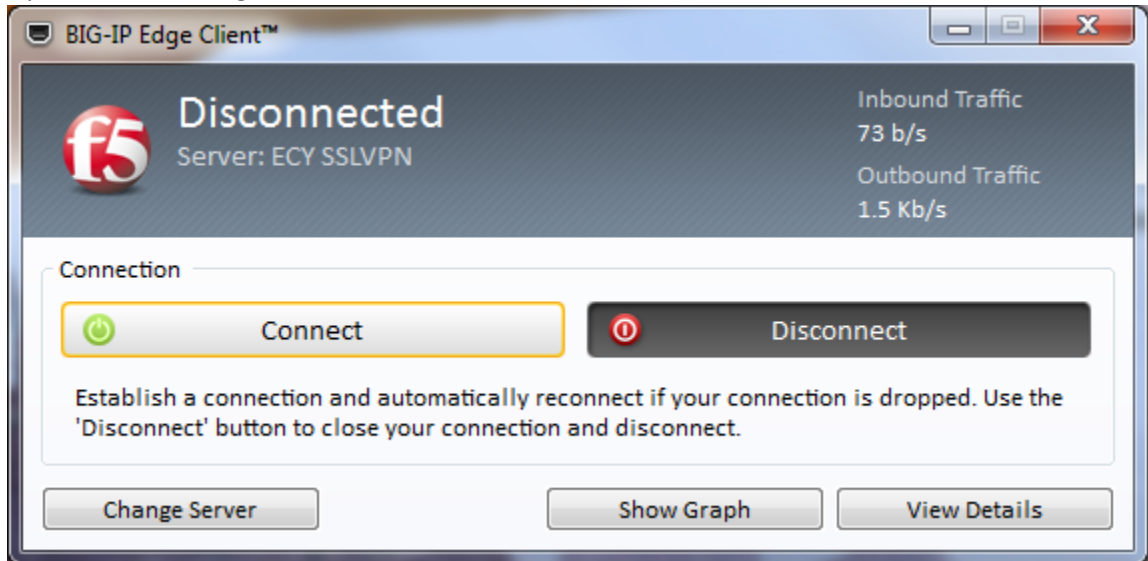
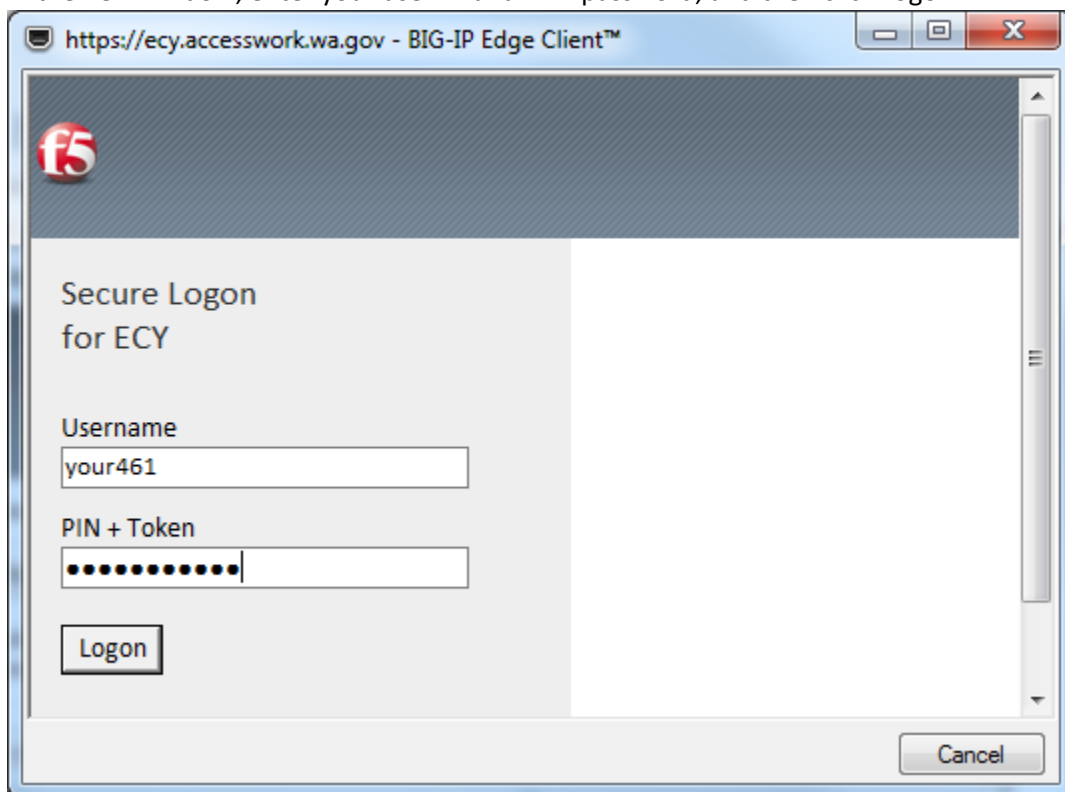


Using the BIG-IP Edge Client VPN

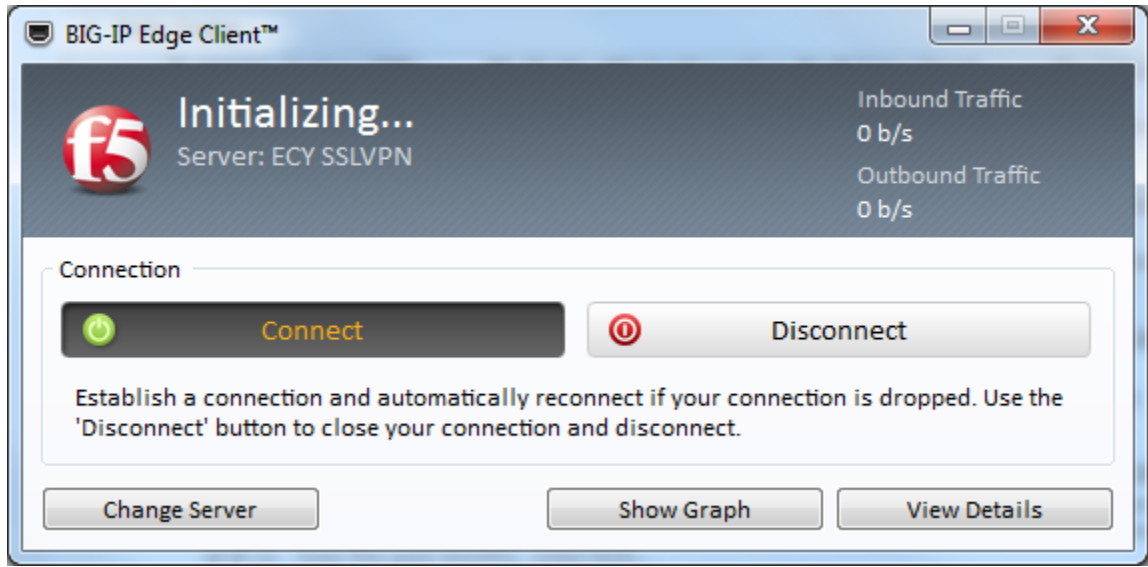
1. Open the BIG-IP Edge Client and click the Connect button.



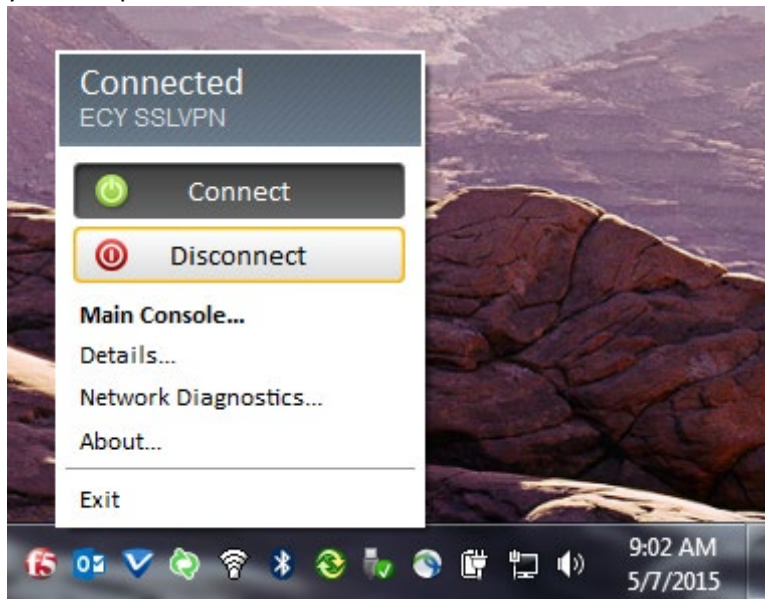
2. In the new window, enter your user ID and VPN password, and then click Logon.



3. Wait for the VPN to connect. All VPN windows will minimize after the connection is made.

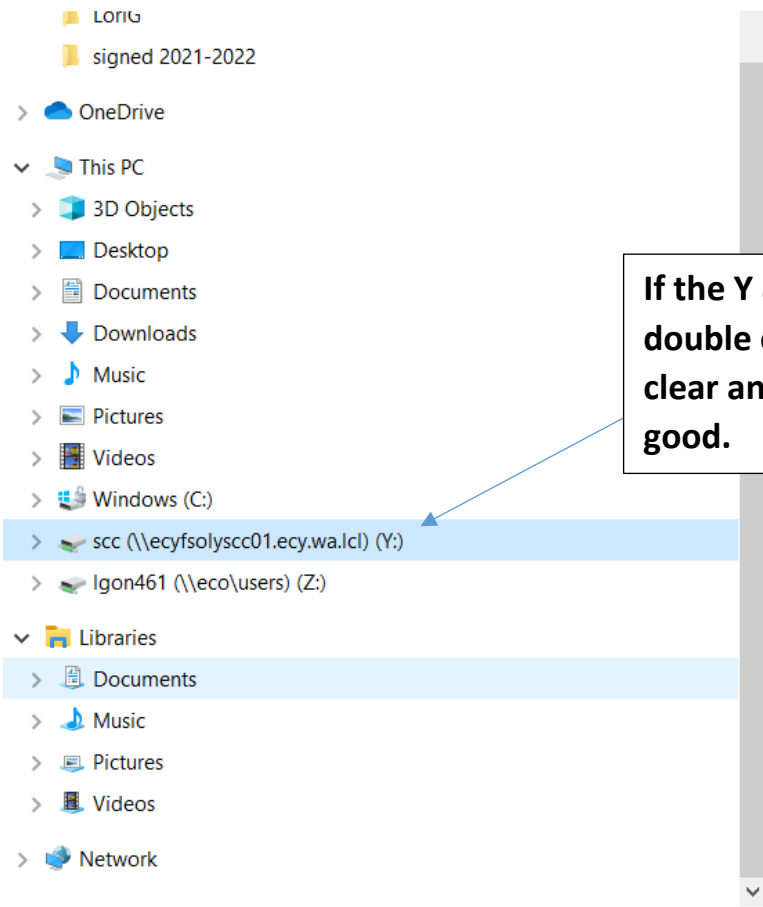


4. To log off, click on the f5 logo in the System Tray and choose Disconnect. Or you can just shut your computer off.



Before you open your Outlook (email) Check your network drives:

If the Y drive and the Z drive have red "X's" double click to clear



If the Y and Z have a red x on them, double click on both of them to clear and close. You should be all good.

