

Department Legend

- AQ
- ASD
- Cost Allocated
- EAP
- HWTR
- SEA
- SPPR
- SWM
- TCP
- US EPA
- WA CC
- WQ

General Notes:

- Proceed to the Nearest Exit
- Do Not Use Elevators
- Follow Primary Route First
- Use Secondary Route if Blocked

Legend

- ← Primary Evacuation Route
- - - Secondary Evacuation Route
- Exit
- Elevator
- AED
- Fire Extinguisher

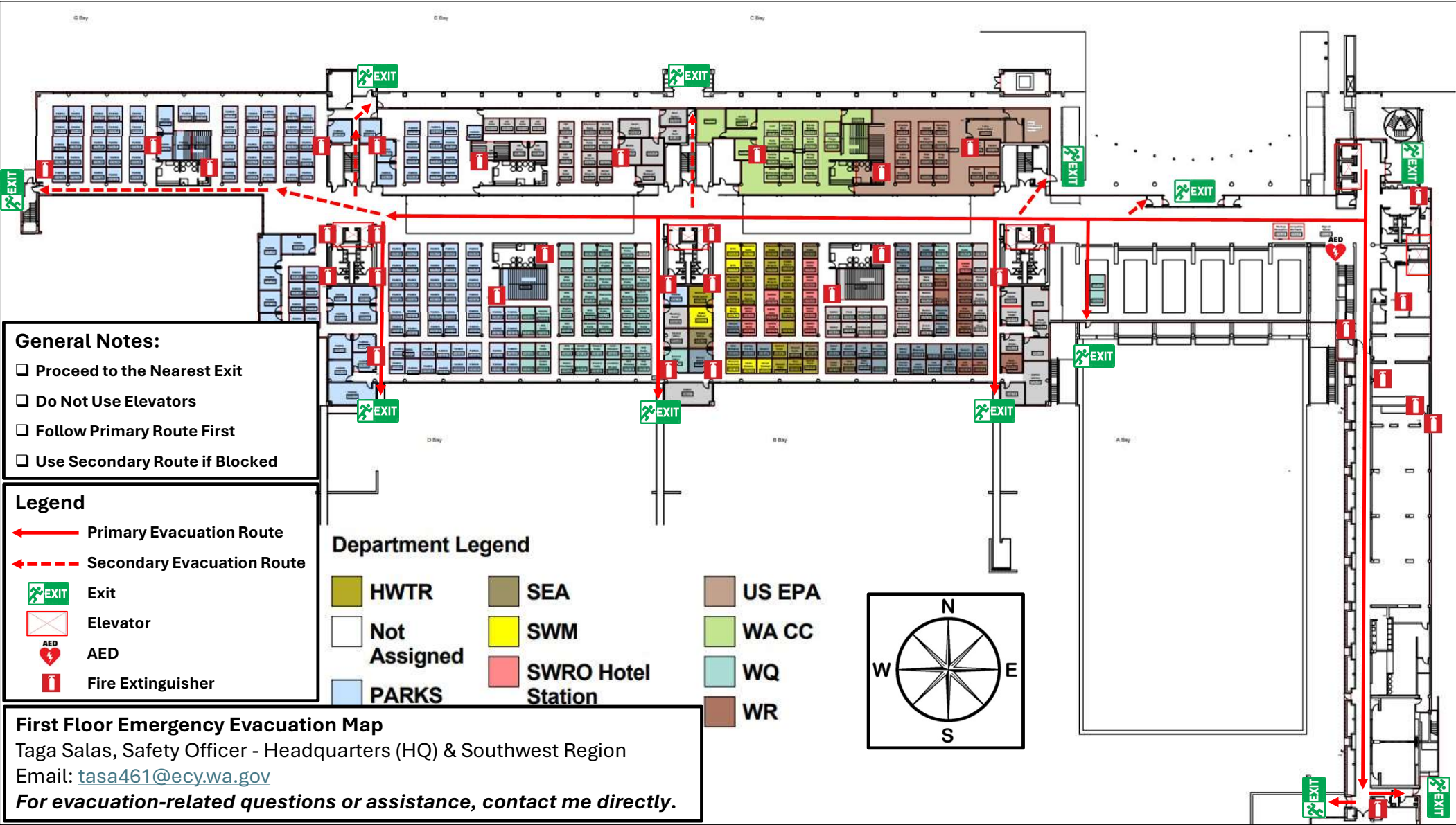


Basement Floor Emergency Evacuation Map

Taga Salas, Safety Officer - Headquarters (HQ) & Southwest Region

Email: tasa461@ecy.wa.gov

For evacuation-related questions or assistance, contact me directly.





General Notes:

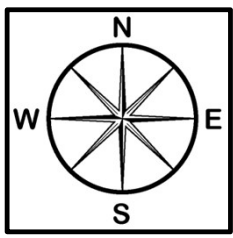
- Proceed to the Nearest Exit
- Do Not Use Elevators
- Follow Primary Route First
- Use Secondary Route if Blocked

Legend

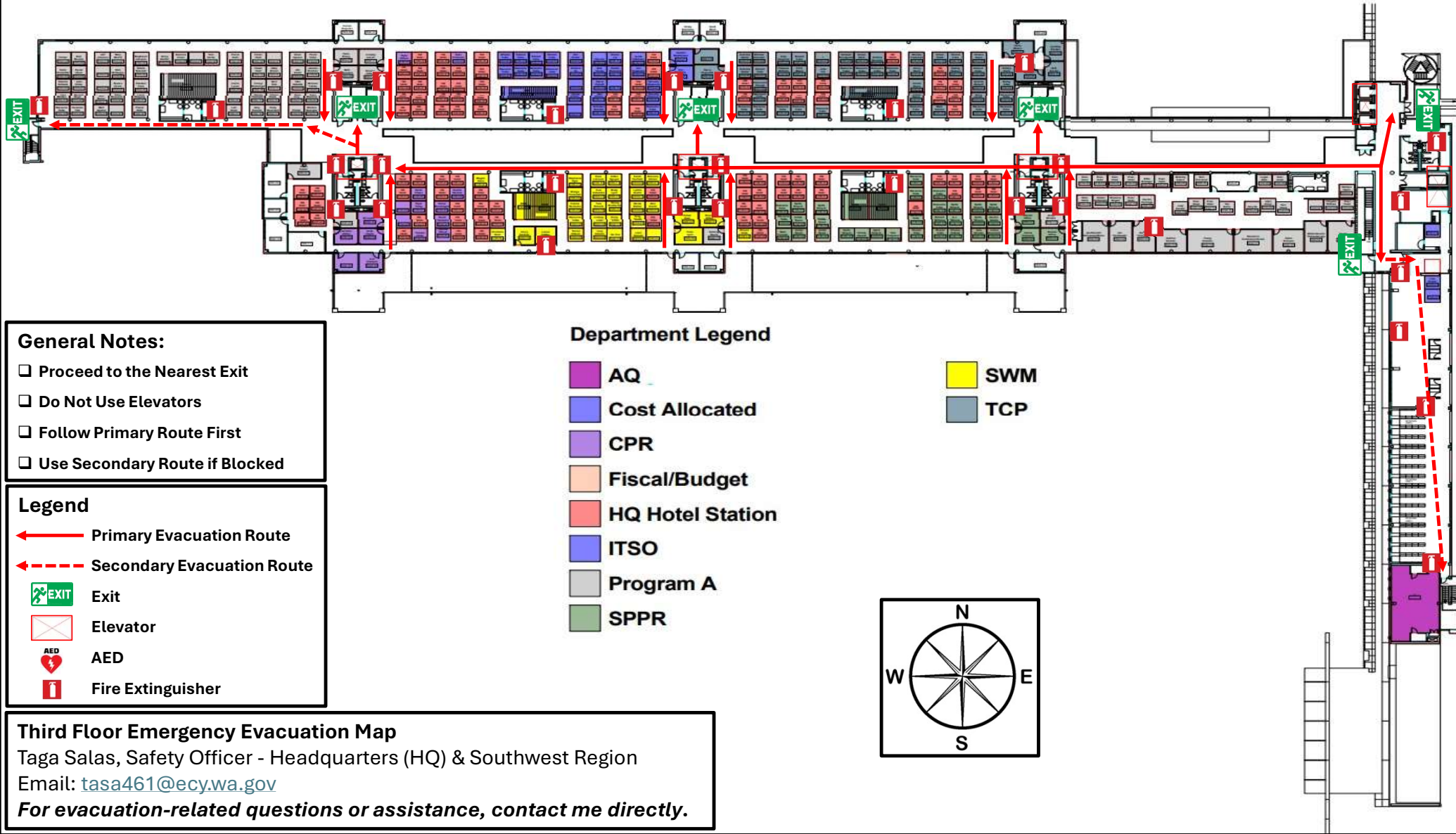
- Primary Evacuation Route
- Secondary Evacuation Route
- Exit
- Elevator
- AED
- Fire Extinguisher

Department Legend

- AQ
- EAP
- HQ
Hotel Station
- HWTR
- NWP
- OCB
- SEA
- WQ
- WR

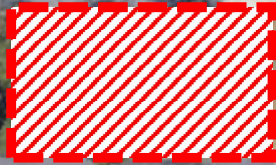
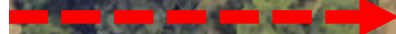


Second Floor Emergency Evacuation Map
 Taga Salas, Safety Officer - Headquarters (HQ) & Southwest Region
 Email: tasa461@ecy.wa.gov
For evacuation-related questions or assistance, contact me directly.



Primary & Alternate Assembly Points

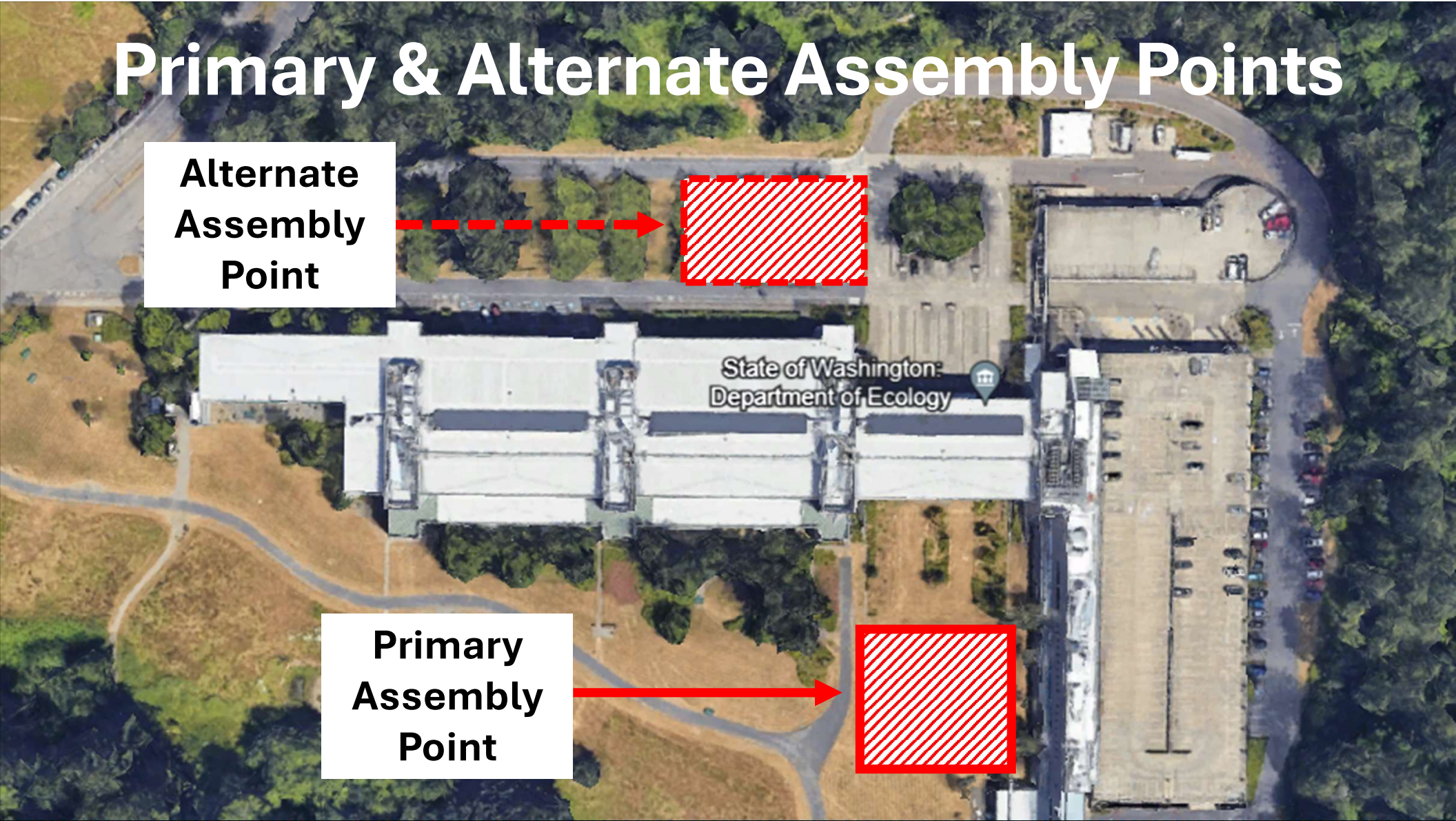
**Alternate
Assembly
Point**



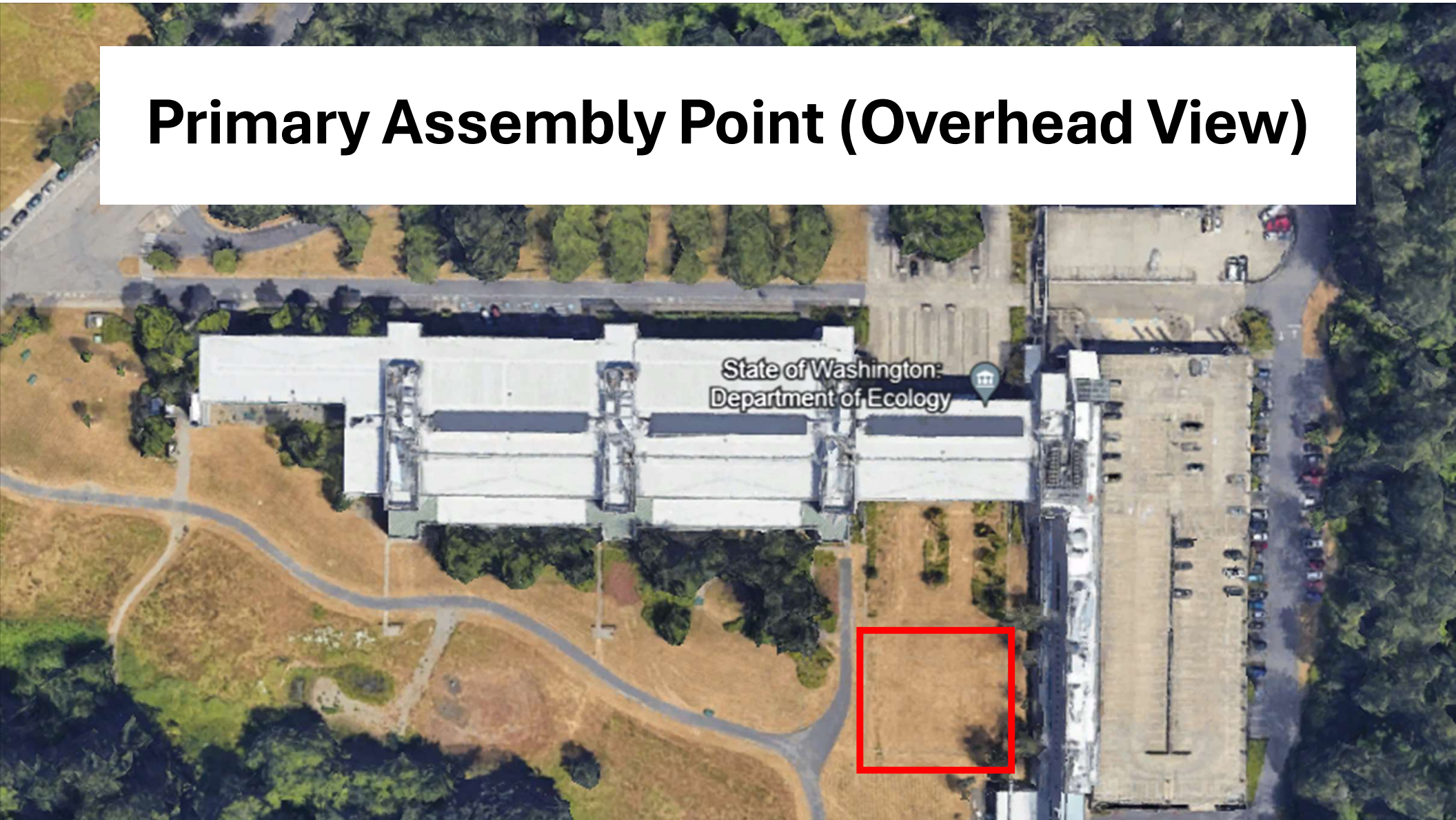
**Primary
Assembly
Point**



State of Washington:
Department of Ecology



Primary Assembly Point (Overhead View)



Primary Assembly Point (Street View)





Alternate Assembly Point (Overhead View)

Alternate Assembly Point (Street View)

