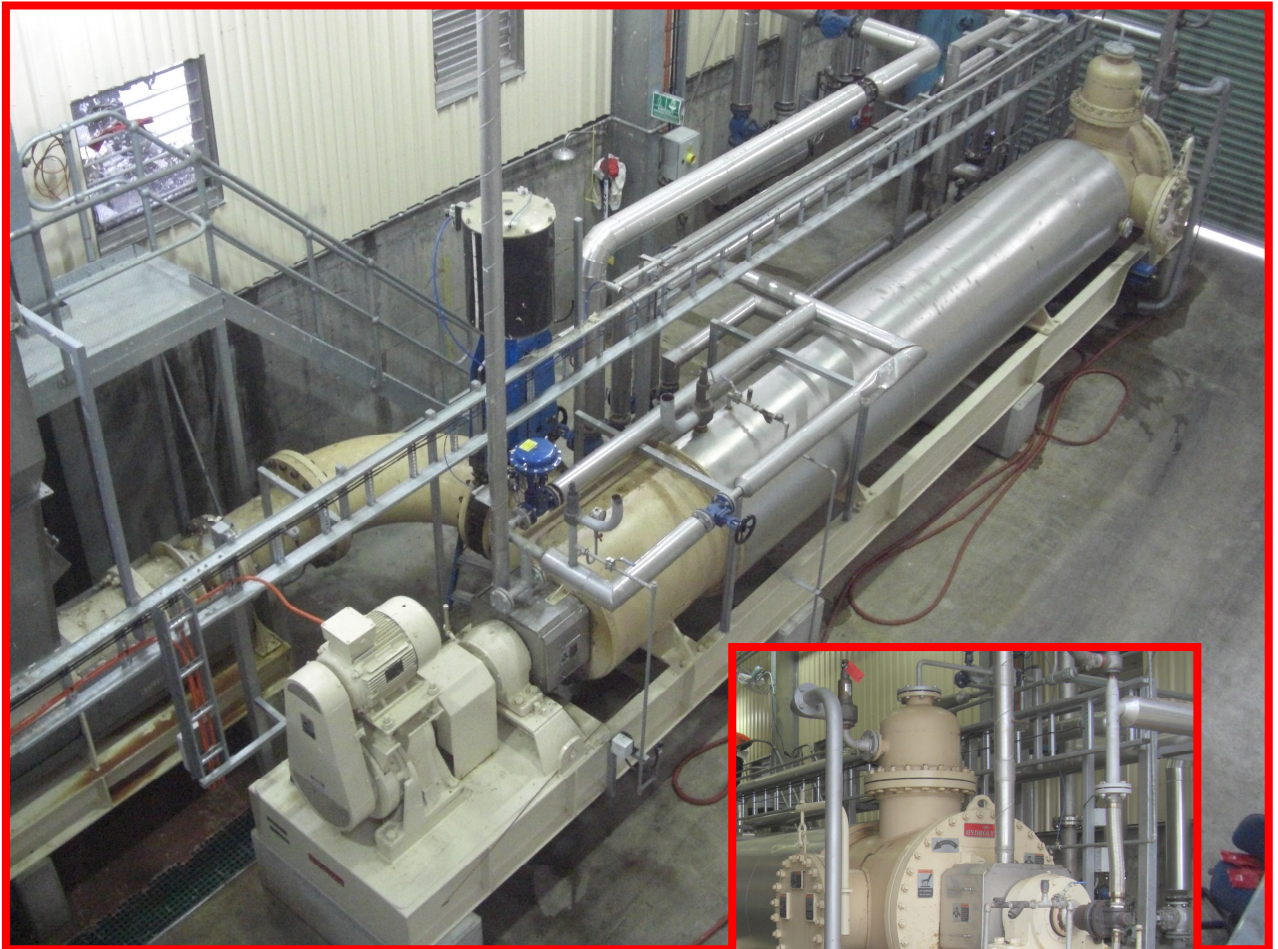




Design. Manufacture. Install.

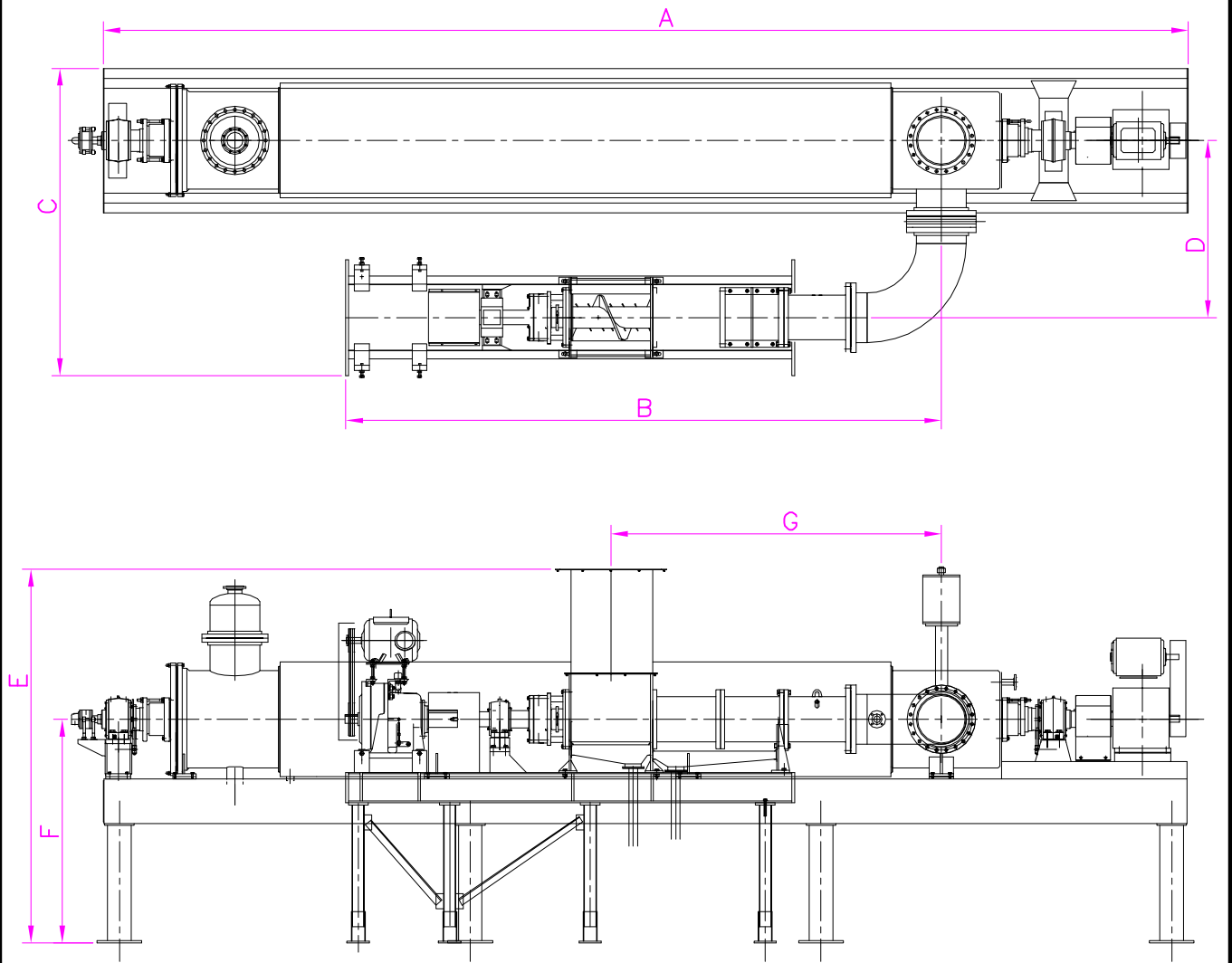
Specialising in Rendering & Process Equipment

CONTINUOUS HYDROLYSER



Features:

- Replaces up to 10 Batch units.
 - Uses less floor space.
 - Allows lower building costs.
 - Reduces need to treat room air.
 - Low operating costs.
 - Few moving parts.
 - Low connected horsepower.
 - Minimal manpower requirements.
 - Safety features include an automatic shut-off gate valve between the Hydrolyser and Feeder.
 - One feed point and one discharge point.
 - An instrumentation and control package monitors and maintains process functions.
- Low steam usage (0.3# per 1 # of material).
 - Steam saving discharge assembly maintains internal pressure and operating level .
 - 860 kPa - AS1210 component vessel.



SPECIFICATIONS

SIZE	A	B	C	D	E	F	G	FEEDER SHIPPING WT.	HYDROLYZOR SHIPPING WT.	APPROX. CAPACITY
	MM	MM	MM	MM	MM	MM	MM	KG	KG	KG/HR
CH2828	8335	5435	2185	1245	3810	2285	2880	2387	9525	4535
CH3828	11635	6096	2870	1705	3810	2285	3355	4990	18340	9075
CH4828	11635	6605	3405	1955	3810	2285	3505	6815	22225	13610



Keith Engineering (Australia) Pty. Ltd.
 20 Kellet Close, Erskine Park, NSW
 PO Box 354, St. Clair
 NSW 2759

T 02 9852 1000
 F 02 9852 1001

admin@keitheng.com.au
 www.keitheng.com