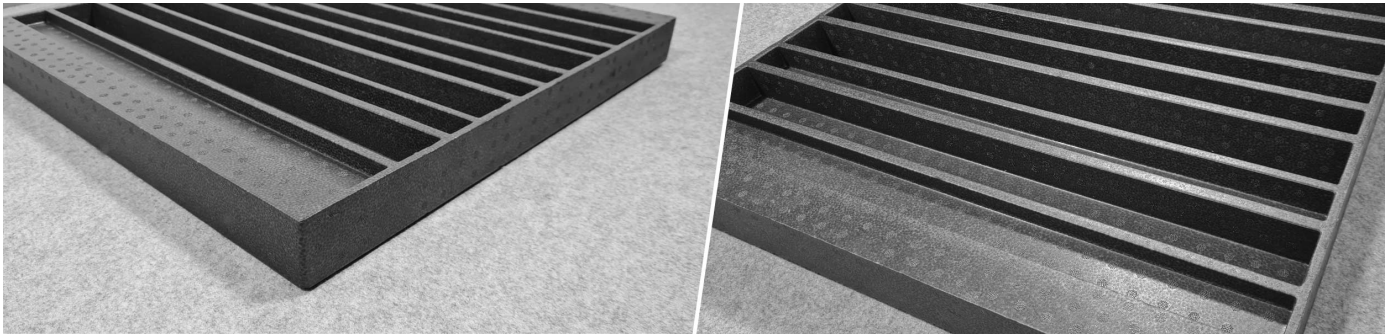


Lagos E Tech - Diffuser



Lagos E Tech is the result of extensive research into diffusion techniques – it is based on a traditional QRD diffuser, but combine varying widths with each cell depth, overcoming some of the limitations of the standard QRD diffuser.

The phase grating surface of the diffuser is designed to provide a more uniform sound field through mid-high frequency diffusion. The well depths are individually tuned to enhance performance at certain frequencies, essentially increasing the effective range of the panel, without compromising the overall linear response – Lagos performs 15-20% lower with a linear frequency response.

The panels' semi-cylindrical response pattern makes it the perfect solution for multichannel rooms and can easily be installed in specific arrays to provide 2D diffusion.

Features

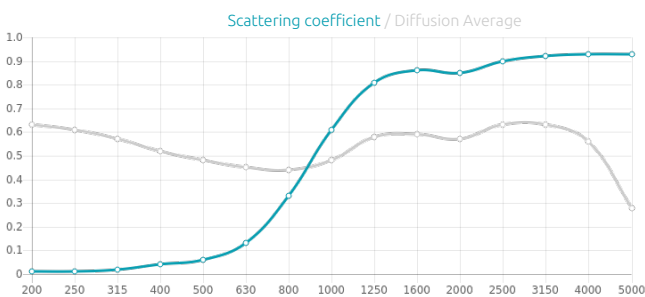
Type:
1D - QRD Diffuser

Scattering range:
800 Hz to 6000 Hz

Recommended for

- Home Cinema

Performance



Why use diffusion?

Diffuser panels scattering incoming sound waves into smaller, lower energy waves, scattered over a large area. These scattered reflections create a homogeneous sound field distribution and a full, balanced acoustic response. This improves speech intelligibility, music quality, and creates a more uniform, larger sweet spot.

Lagos E Tech is a product designed to be installed behind the stretch fabric.

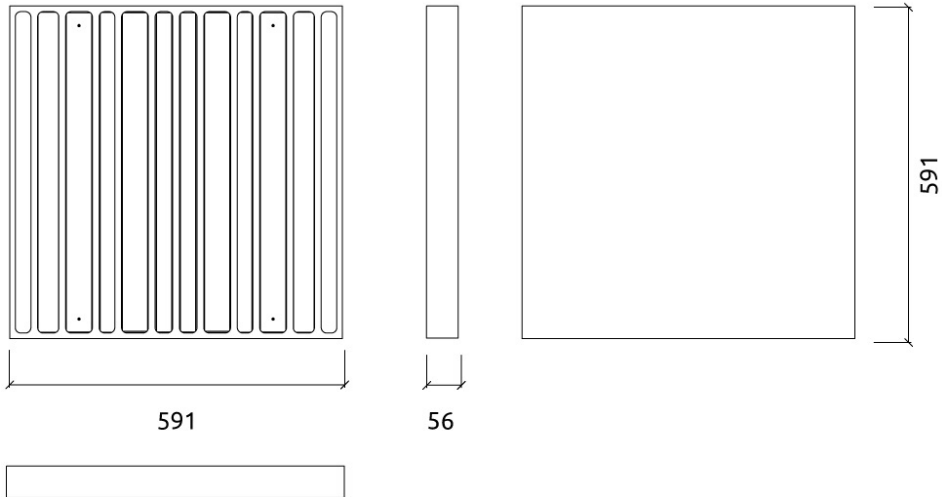
This product is available in the following Fire Rate:
FG | Furniture Grade

PRODUCT COMPOSITION:

Lagos E - Tech
- EPS

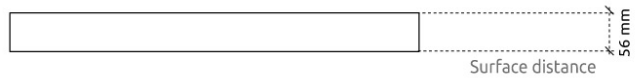
Dimensions:
- 591x591x56mm

Integrated fixing system | panel can be rotated 90° to any orientation.



Fixing Systems

GlueArt & Instant Fix Kit



Integrated Fixing Systems



Dimensions

FG | 595x595x56mm

Weight

0.48 Kg

Box

Quantity per box: 6

Dimensions: 645x405x655mm

Volume: 0.171m³

Weight: 4.5Kg

Lagos E Tech - Diffuser

(FG) Product Fire Grade - Furniture Grade



FG | (E03) Nero

Retail code:

001013140010031