

# Your Modular



# Building Solution

# Welcome

At Modify our mission is to provide high quality buildings at an affordable price

---

Why build with us

---

3

---

Standard inclusions & add ons

---

5

---

Residential solutions

---

9

---

Extended range

---

13

---

Cabins

---

19

---



**MODIFY**

# Why build with us?

# Affordable building solutions without compromising quality

With a wealth of hands-on experience, Modify is dedicated to delivering the best modular and portable solutions to satisfied customers across Australia.

We take great joy in collaborating with our clients, attentively listening to their requirements and making sure they're happy with the results.



# From humble beginnings

Luke Angel and Marcus Rayner worked together at Kanmantoo Copper Mine in 2013.

“We had a vision to join forces and build a great business where we could apply our skills and experience, out of this vision Modify was born”





10 Year Structural  
& Workmanship  
Guarantee



# Why choose Modify?

---

## Experience

With over 20 years of experience in the construction business, we know our stuff. You can rely on our experience as a registered Master Builder Association member.

---

## Affordable Options

Choose from a number of options to suit your building requirements and budget.

---

## Complete Project Management

We take care of absolutely everything, from gathering information for submitting Council applications, to organising your delivery, we can arrange all transport and placement on site.

---

## Local Specialists

We employ local qualified trades, ensuring quality and compliance for Australian Standards and Australian conditions.

---

## Custom Buildings

Although we provide floor plans and design concepts, our team can cater to any variation of building in size, configuration and fit-out. This includes the capacity to join our buildings for larger configurations.

---

## Quality Products

All of the products and materials we use have been carefully selected to provide the best value for your investment and sourced from local suppliers.

---

## Family Business

We are a family business, with strong family values. Your building will be given the same care and attention as if it were one of our own family members.

---

## Ease of Connection

We design your building so that your installation is as close to 'plug and play' as it can be.

---

## Production

Our buildings are made to order at our site in Murray Bridge and can be built faster than a conventional building.

# Inclusions

Standard inclusions  
with every build



Strong Steel Skid Base

Vinyl Flooring



Steel Frames

External Cladding



Colour Coded Flashings

Standard Insulation

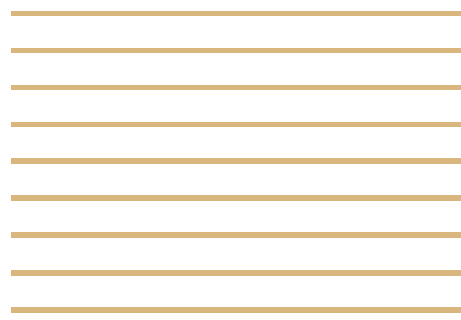


Smoke Detector

Ceiling Lights



Double Power Points



# Add-ons



Additional options that can be added to your building



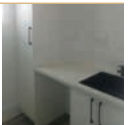
Patio

Kitchen & Appliances



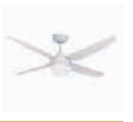
Bathroom

Laundry



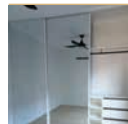
Air Conditioner

Ceiling Fan



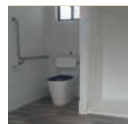
TV Point & Bracket

Data Points



Wardrobes

Upgraded Cladding Options



Disabled or Accessible Bathrooms



Whether you need a compact granny flat or a spacious one, we have the expertise to deliver a solution that meets your needs.

We take pride in providing a wide range of design options and materials to ensure that our solutions are durable, affordable, and perfectly tailored to your unique requirements.

# Floor Plans



# Residential Solutions

Our portable cabins are the ideal solution for anyone looking to live off-grid, downsize their living space, or enjoy a self-contained modular home that's cost-effective, modern and functional.

\*Prices are indicative and are subject to change with customisation of buildings



## 6x3 Compact Retreat with Bathroom

📌 1 🛋️ 1



## 6x3 Compact Studio

🛋️ 1



## 9x3 Cozy Range One Bedroom

📌 1 🛋️ 1



## 9x3 Cozy Range Two Bedroom

📌 1 🛋️ 2



# Residential Solutions

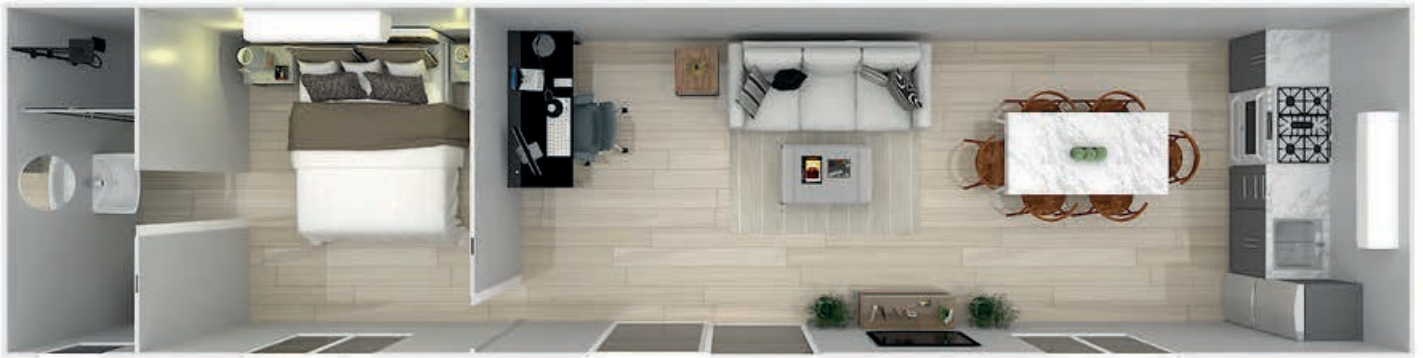
Whether you are looking for a compact and functional tiny home or a self-contained, off-grid living solution, we can build the perfect transportable and cost-effective cabin for you.

\*Prices are indicative and are subject to change with customisation of buildings



12x3 Casa Range One Bedroom

📌 1 🏠 1



12x3 Casa Range Two Bedroom

📌 1 🏠 2



12x3 Casa Range Two Bedroom Two Bathroom

📌 2 🏠 2



12x3.5 Casa Lux Two Bedroom One Bathroom

📌 1 🏠 2



# The Extended Range

With a wide range of customisation options available, the possibilities are almost endless!



\*Prices are indicative and are subject to change with customisation of buildings

## 7x4 One Bedroom Granny Flat

📌 1 🏠 1



## 9x4 Cozy Range One Bedroom

📌 1 🏠 1



## 12x4 One Bedroom Retreat

📌 1 🏠 1



# The Extended Range

Our portable cabins can be used for a wide range of purposes, from granny flats to home offices, and guesthouses to teenage retreats.

\*Prices are indicative and are subject to change with customisation of buildings



## 9x6 Premium Casa Two Bedroom

📌 2 🛋️ 2



## 14x4 Premium Casa One Bedroom

📌 1 🛋️ 1



## 14x4 Premium Casa Two Bedroom

📌 1 🛋️ 2



# The Extended Range

We understand that durability and quality are paramount when it comes to portable living spaces, which is why we follow industry-leading building codes and standards to ensure that your unit is safe, secure, and comfortable.



12x8 Two Bedroom Condo

📍 2 🏠 2



## 12x6 Premium Casa Three Bedroom

📌 1 🏠 3



## 14x8 Three Bedroom Modular Home

📌 2 🏠 3



# Cabins

Our portable cabins are built to last, using only the highest quality materials and construction methods.

\*Prices are indicative and are subject to change with customisation of buildings



6x3 Cabin

🪑 1 🛏 1



10x3 Cabin

🪑 1 🛏 1



10x4 Cabin

🪑 1 🛏 2



12x4 Cabin

🪑 1 🛏 2





MODIFY

192 Maurice Road,  
Murray Bridge SA 5253

[builtbymodify.com.au](http://builtbymodify.com.au)

