

# Somfit® Small, simple to use and comfortable

Somfit® is a wearable device for collecting patients' physiological data, primarily for use in assisting medical professionals to diagnose sleep disorders.

## Ease of use and comfort were the main considerations in the design of the Somfit®

The Somfit® system comprises of the Somfit® device, a disposable adhesive electrode and a phone app.



**A single-use adhesive-gel electrode.** This is worn on the patient's forehead and collects the physiological data.



**The Somfit® device,** is pressed onto the electrode. The Somfit houses the sensors and transmits the data to the Somfit App via Bluetooth.



**The Somfit® App** This is used to control the Somfit and to transmit the study data to be processed.



**Profusion neXus 360™ Lab Management system** is designed to support the continuing evolution of labs and clinics.



## Somfit® Measures

- Automatic Hypnogram
- EEG (1ch)
- EMG (1ch, measured)
- EOG (2 ch, measured)
- Blood Oxygen Sat (SpO2)
- Pulse (Heart Rate)
- Peripheral Arterial Tone
- Movement
- Snore
- Ambient Light
- Automatic Stage Light Off/On



Somfit<sup>®</sup> D has all the benefits of the Somfit, in a single-use disposable format.



## The Somfit<sup>®</sup> D Advantages

- *No return shipment*
- *No cleaning*
- *No charging*
- *No infection risk*
- *No additional wires, finger probes, or sensors*
- *Immediate access to study data and results.*



## Designed for comfort and accuracy.

The Somfit and Somfit D were designed for easy application and use by the patient at home. They can be setup with a few simple steps, while enabling the collection of high-quality signals providing medical grade data to aid in the clinician's diagnostic capabilities.



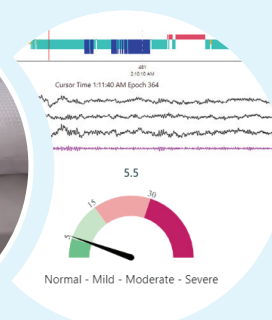
**Quick and simple application.**  
No wires.



**Easy to use APP.**



**Light and comfortable.**



**Medical grade data.**

