



LOVE PRINT



Follow each step in order to ensure your PDF is set up correctly for print

The following steps show the correct export settings when creating a PDF from InDesign

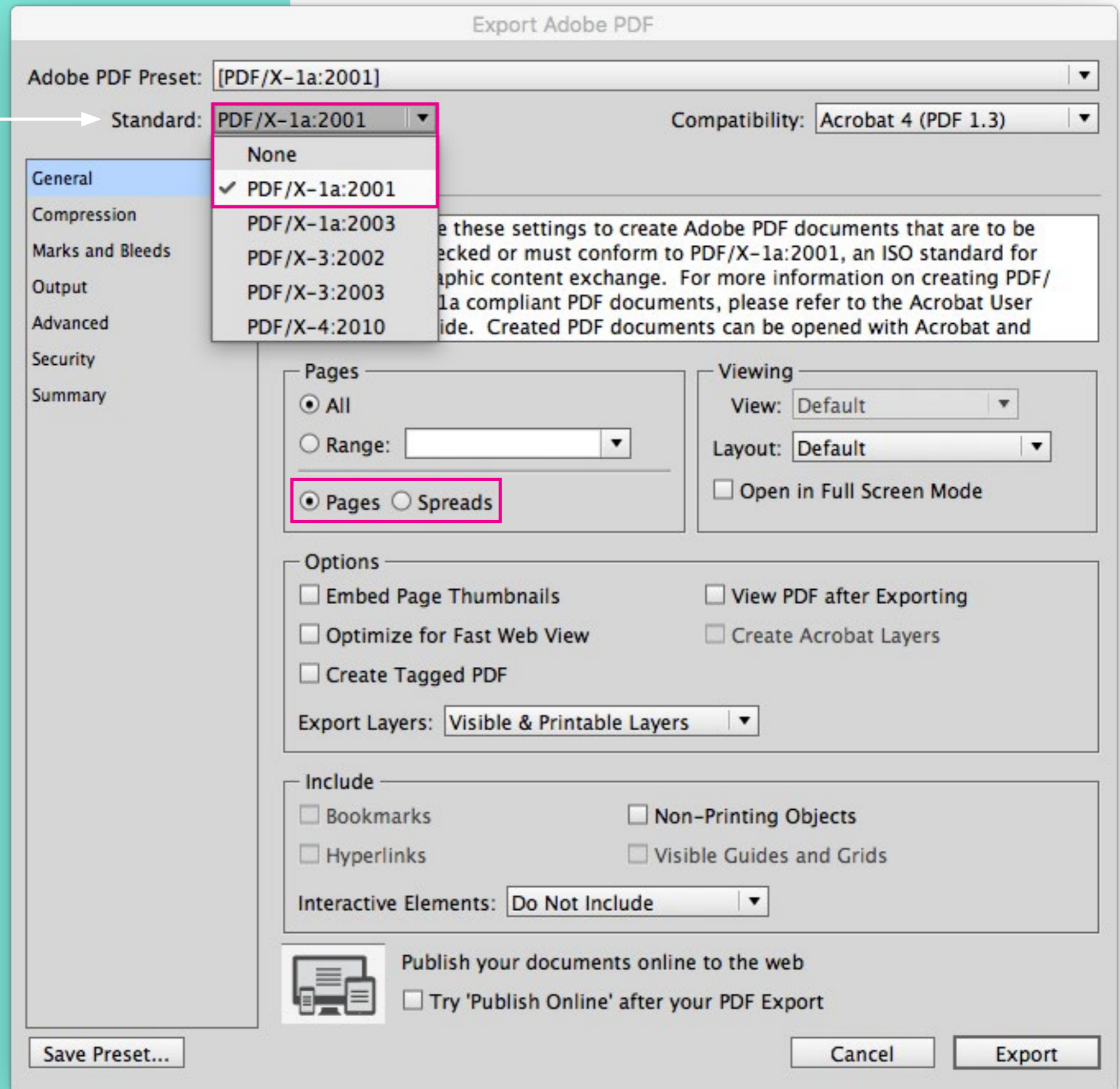
PDF SETTINGS STEP 1:

PDF/X-1a 2001, pages

High-resolution PDF with PDF/X-1a:2001 preset selected

When creating a PDF for print, there are specific options which must be set for commercial printing. These include default resolution, compression settings and font embedding. Where possible, please ensure a **300dpi PDF X-1A** or **Fogra39 CMYK PDF** is outputted and supply as single pages.

If you are supplying a document with multiple pages, please export the front and back cover of the document as a separate file, and supply as single pages in page order.



PDF SETTINGS STEP 2:

📌 Use 300 pixels per inch with Image quality set to Maximum

Compression settings

It's really important you choose high resolution compression settings for both colour and greyscale artwork. Compression should be sampled to **300dpi** with 'auto compression' set to **high**. Bitmapped images (monochrome: i.e. line art) should be set at **600dpi**.

The screenshot shows the 'Export Adobe PDF' dialog box with the following settings:

- Adobe PDF Preset: [High Quality Print] (modified)
- Standard: PDF/X-1a:2001
- Compatibility: Acrobat 4 (PDF 1.3)
- General (selected in sidebar)
- Compression (selected in sidebar)
- Color Images:
 - Bicubic Downsampling to: 300 pixels per inch
 - for images above: 450 pixels per inch
 - Compression: Automatic (JPEG)
 - Tile Size: 128
 - Image Quality: Maximum
- Grayscale Images:
 - Bicubic Downsampling to: 300 pixels per inch
 - for images above: 450 pixels per inch
 - Compression: Automatic (JPEG)
 - Tile Size: 128
 - Image Quality: Maximum
- Monochrome Images:
 - Bicubic Downsampling to: 1200 pixels per inch
 - for images above: 1800 pixels per inch
 - Compression: CCITT Group 4
- Compress Text and Line Art
- Crop Image Data to Frames
- Buttons: Save Preset..., Cancel, Export

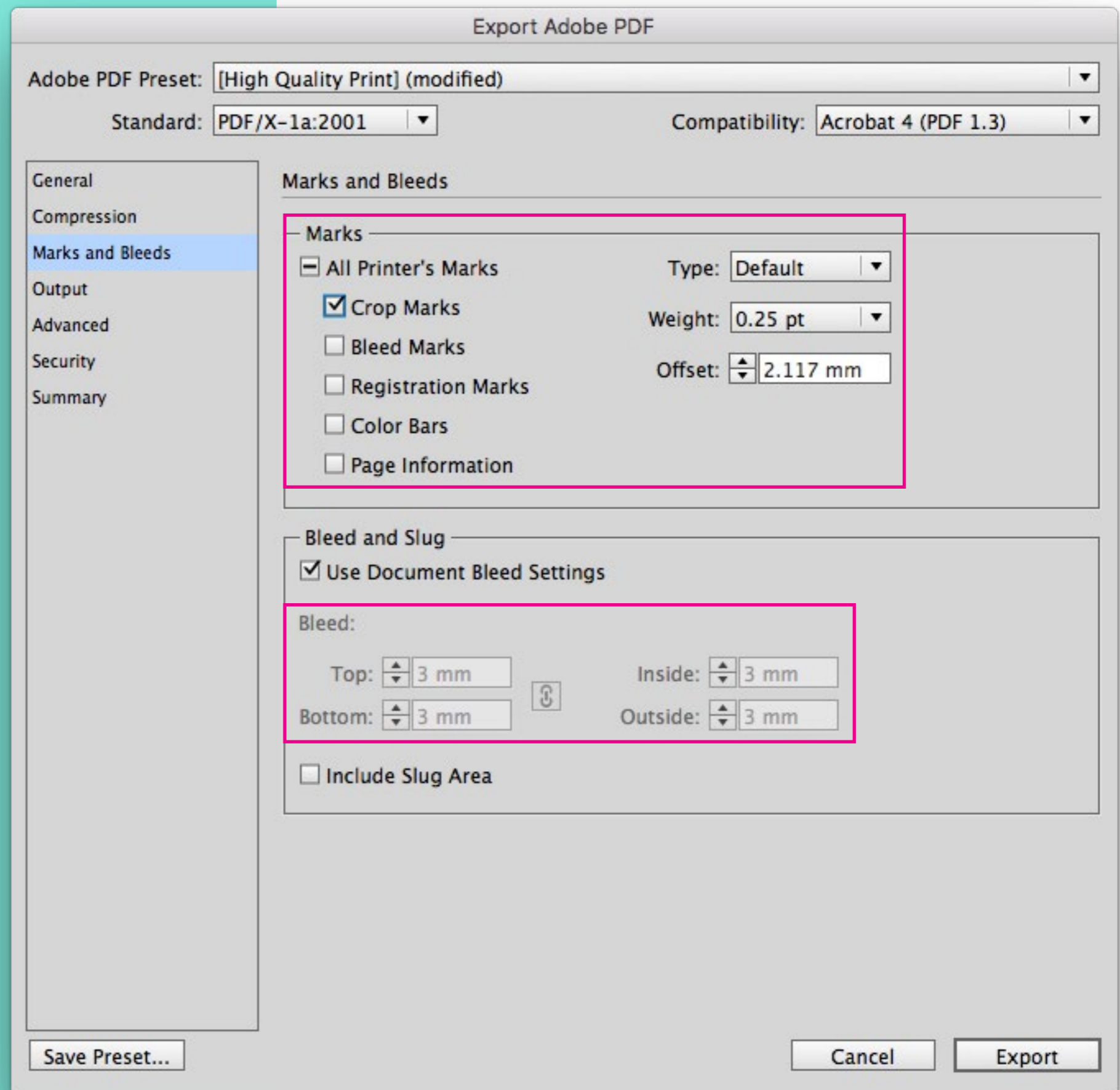
PDF SETTINGS STEP 3:

📐 Crop marks + 3mm bleed

Bleed and crop marks

All artwork must have **3mm bleed** if you require the image to bleed off the edge of the paper. **Crop marks** should be included if the artwork does not fill a whole page area (i.e. no bleed).

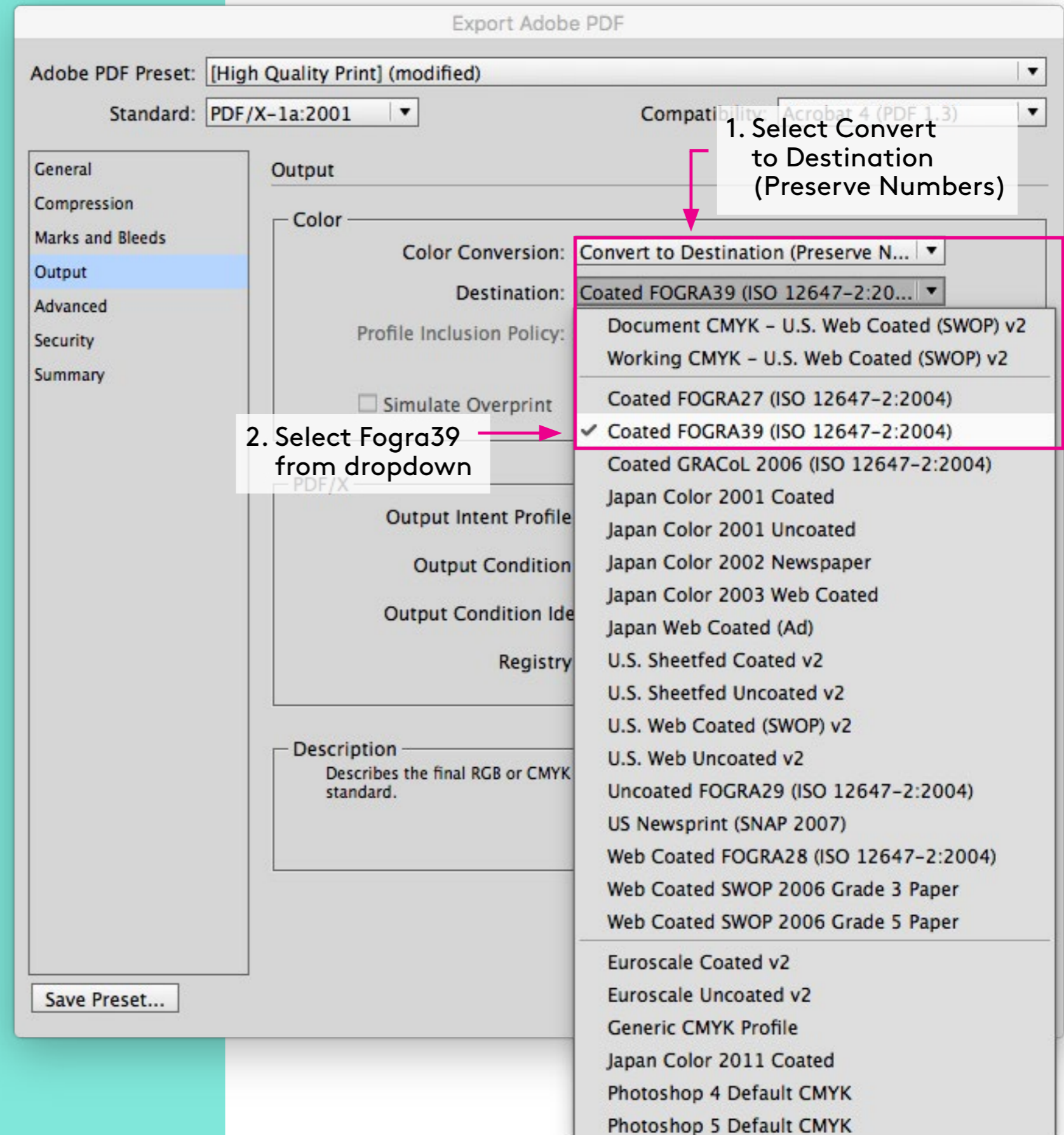
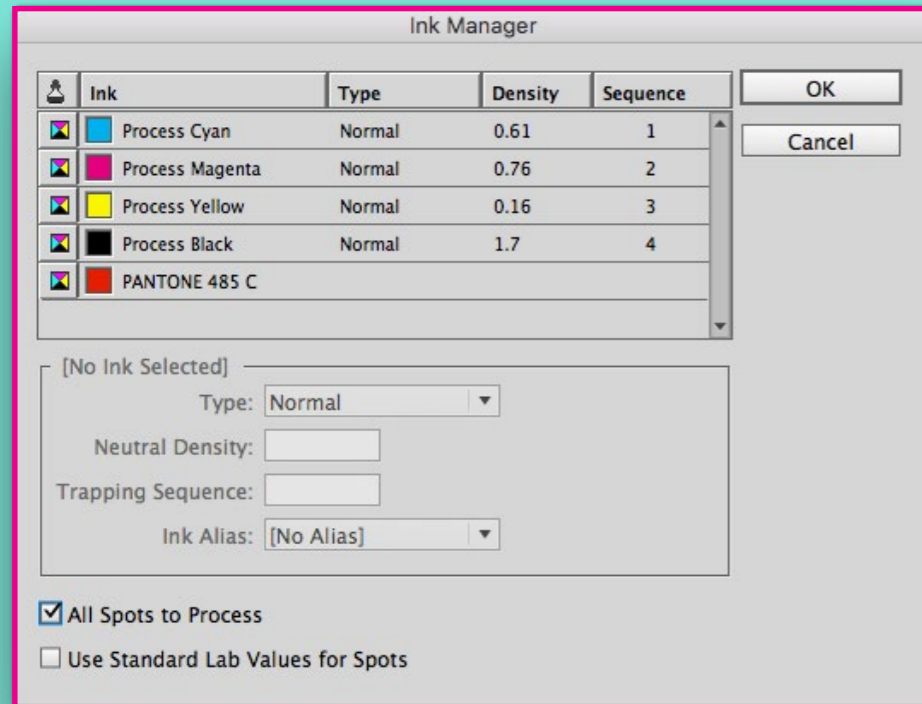
Please ensure that artwork is supplied at the correct finished size required. If you need to change the size of the artwork please let us know and allow us time for amendments.



PDF SETTINGS STEP 4:

❖ Set destination to Fogra 39

❖ Pantones should be set to process for digital print



DOCUMENT SETUP: 16 PAGE A4

- ❖ All items that bleed off the page must go to the red line
- ❖ Convert all fonts to outlines
- ❖ The safe text area is the inner purple line
- ❖ The black line is the trim size

Artwork amendments or Re-submission

Our prices include 'pre-flight checking' your artwork and supplying a PDF proof for your approval. We will correct any easy to rectify issues that we spot as part of this process - free of charge.

If we need to amend your artwork or you need to re-submit corrected files to us there may be an additional charge which includes the cost of an additional PDF proof. More extensive amending or correcting is charged depending upon the amount of time required to rectify.

