

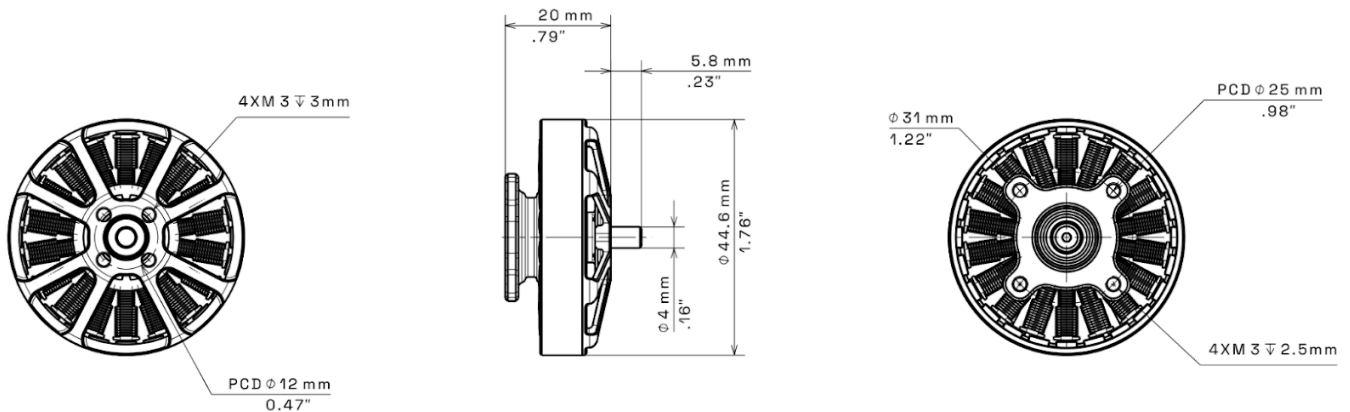
# 4006 SL

## 400 KV

### MOTOR SPECIFICATIONS

Kv (Motor Velocity Constant)	400 RPM/V
Kt (Motor Torque Constant)	0.030 Nm/A @ 4800 RPM
Maximum Continuous Current*	10A (180s)
Maximum Continuous Power*	250W (180s)
Power Density	2.72 W/g (Rated), 5.11 W/g (Maximum)
Voltage Range	22V - 25V ( 6S LiPo)
I <sub>o</sub> (24@V)	0.7A (24@V)
Inductance per phase (Winding Inductance)	0.110 [ ≈0.03 ] mH
R <sub>ph</sub> (Wind Resistance per phase)	0.23 [ ≈0.03 ] Ω
Stator Poles	18S
Magnetic Poles	24P
Bearings	Dual 619/4-2RS Sealed
Stick Out Shaft Diameter	∅ 4 mm
Motor Diameter	∅ 44.6 mm
Motor Length	20 mm
Motor Weight	67 g ± 2 g
Motor Mount Pattern @ 90 deg	4 X M3 @ PCD ∅ 25 mm ↓ 2.5 mm
Compatible Propeller Size	13 " inch to 16 " inch
Propeller Mount Pattern	4 X M3 @ PCD ∅ 12 mm ↓ 3 mm

### 2D CAD



Note: Specifications and drawings may be revised without notice. Vector Technics assumes no liability for reliance on unverified data.  
All Dimensions in millimeters [mm]

## 4006 SL 400 KV - TEST DATA

**Note:** The test data provided below is subject to environmental and testing conditions, including but not limited to temperature, humidity, altitude, and the equipment used. Results may vary depending on specific testing parameters and conditions.

<b>Propeller</b>	TM 14 x 4.8 CF_FX			<b>Power Supply / Battery</b>	TB - 22000mAh 6S	
<b>ESC</b>	HW 40A 6S			<b>Environmental Temp:</b>	29 ° C	<b>Cross-winds:</b> Mild
<b>Test Date:</b>	10-08-2024	<b>Humidity:</b>	60 %			

PWM - Throttle%	Voltage	Current (A)	RPM	Thrust (g)	Torque (N*m)	Electrical Power (W)	Efficiency	Temp (Celcius)
1300 - 30	25.2	0.5	2318	155	0.04	12.6	12.3	52 ° C [@70% 10 min Constant]
1400 - 40	25.1	1.1	3126	309	0.06	27.6	11.2	
1500 - 50	25.1	2.3	4060	564	0.1	57.7	9.8	
1600 - 60	25	3.8	4843	800	0.14	95.0	8.4	
1700 - 70	25	5.6	5417	1044	0.19	140.0	7.5	
1800 - 80	24.9	7.7	6015	1305	0.23	191.7	6.8	56 ° C [Maximum]
1900 - 90	24.8	10.4	6586	1591	0.29	257.9	6.2	
1950 - 95	24.8	10.9	6700	1652	0.29	270.3	6.1	
2000 - 100	24.8	10.9	6703	1644	0.29	270.3	6.1	

<b>Propeller</b>	SS 15 x 5.5 CF_FX			<b>Power Supply / Battery</b>	TB - 22000mAh 6S	
<b>ESC</b>	HW 40A 6S			<b>Environmental Temp:</b>	33 ° C	<b>Cross-winds:</b> Mild
<b>Test Date:</b>	04-04-2025	<b>Humidity:</b>	57 %			

PWM - Throttle%	Voltage	Current (A)	RPM	Thrust (g)	Torque (N*m)	Electrical Power (W)	Efficiency	Temp (Celcius)
1300 - 30	25.1	0.6	2148	193	0.04	15.1	12.8	55 ° C [@70% 10 min Constant]
1400 - 40	25	1.4	2892	368	0.07	35.0	10.5	
1500 - 50	25	2.8	3685	611	0.12	70.0	8.7	
1600 - 60	24.9	4.7	4340	876	0.17	117.0	7.5	
1700 - 70	24.8	6.9	4913	1136	0.22	171.1	6.6	
1800 - 80	24.7	9.7	5381	1454	0.28	239.6	6.1	61 ° C [Maximum]
1900 - 90	24.5	13	5820	1738	0.34	318.5	5.5	
1950 - 95	24.5	13.5	5884	1780	0.34	330.8	5.4	
2000 - 100	24.5	13.6	5868	1787	0.35	333.2	5.4	

<b>Propeller</b>	TM 16.2 x 5.3 CF_FX			<b>Power Supply / Battery</b>	TB - 22000mAh 6S	
<b>ESC</b>	HW 40A 6S			<b>Environmental Temp:</b>	29 ° C	<b>Cross-winds:</b> Mild
<b>Test Date:</b>	10-08-2024	<b>Humidity:</b>	60 %			

PWM - Throttle%	Voltage	Current (A)	RPM	Thrust (g)	Torque (N*m)	Electrical Power (W)	Efficiency	Temp (Celcius)
1300 - 30	25	0.7	2120	240	0.05	17.5	13.7	55 ° C [@70% 10 min Constant]
1400 - 40	25	1.6	2815	457	0.09	40.0	11.4	
1500 - 50	24.9	3.1	3613	757	0.14	77.2	9.8	
1600 - 60	24.8	5	4288	1047	0.19	124.0	8.4	
1700 - 70	24.7	7.4	4812	1327	0.24	182.8	7.3	
1800 - 80	24.6	10	5311	1565	0.29	246.0	6.4	61 ° C [Maximum]
1900 - 90	24.5	13.2	5747	1882	0.34	323.4	5.8	
1950 - 95	24.5	13.9	5803	1934	0.35	340.6	5.7	
2000 - 100	24.5	14	5785	1956	0.36	343.0	5.7	

Note: Specifications and drawings may be revised without notice. Vector Technics assumes no liability for reliance on unverified data.