

Technical Report

Title: Product wind, water and impact resistance testing of a sample of Aerobrick rainscreen cladding for TI Tiles International Ltd

Report No: N950-18-17536



Technical Report

Title: Product wind, water and impact testing of a sample of Aerobrick rainscreen cladding for TI Tiles International

Customer: TI Tiles International Ltd
Westview House, Devro Campus
Gartferry Road, Moodiesburn G69 0JE

Issue date: 21 February 2018

VTC job no.: TR0121-3UX1

Author(s): D. Bennett - Technician



Checked by: N. McDonald – Principal Engineer



Authorised by: S. R. Moxon – Operations Director



Distribution: 1 copy to TI Tiles International Ltd
(confidential) 1 copy to project file

This report and the results shown and any recommendations or advice made herein is based upon the information, drawings, samples and tests referred to in the report. Where this report relates to a test for which VINCI Technology Centre UK Limited is UKAS accredited, the opinions and interpretations expressed herein are outside the scope of the UKAS accreditation. We confirm that we have exercised all reasonable skill and care in the preparation of this report within the terms of this commission with the client. This approach takes into account the level of resources, manpower, testing and investigations assigned to it as part of the client agreement. We disclaim any responsibility to the client and other parties in respect of any matters outside the scope of our instruction. This report is confidential and privileged to the client, his professional advisers and VINCI Technology Centre UK Limited and we do not accept any responsibility of any nature to third parties to whom the report, or any part thereof, is made known. No such third party may place reliance upon this report. Unless specifically assigned or transferred within the terms of the agreement, we assert and retain all copyright, and other Intellectual Property Rights, in and over the report and its contents.



**VINCI Technology Centre UK Limited,
Stanbridge Road, Leighton Buzzard, Bedfordshire, LU7 4QH**

Registered Office, Watford. Registered No. 05640885 England.

Tel. 01525 859000
email info@technology-centre.co.uk
web www.technology-centre.co.uk

© Technology Centre

CONTENTS

1 INTRODUCTION.....4
2 SUMMARY AND CLASSIFICATION OF TEST RESULTS5
3 DESCRIPTION OF TEST SAMPLE.....6
4 TEST RIG GENERAL ARRANGEMENT 11
5 TEST SEQUENCE 12
6 WIND RESISTANCE TESTING..... 13
7 WATERTIGHTNESS TESTING..... 19
8 IMPACT TESTING 22
9 APPENDIX - DRAWINGS 30

1 INTRODUCTION

This report describes tests carried out at VINCI Technology Centre UK Limited at the request of TI Tiles International Ltd.

The test sample consisted of a sample of Aerobrick rainscreen cladding manufactured by TI Tiles International Ltd.

The tests were carried out in January 2018 and were to determine the wind, water and impact resistance of the test sample. The test methods were in accordance with the CWCT Standard Test Methods for building envelopes, 2005, for:

Wind resistance – serviceability, cyclic & safety.

Watertightness – dynamic pressure.

Impact resistance.

The testing was carried out in accordance with Technology Centre Method Statement C6681/MS rev 0.

This test report relates only to the actual sample as tested and described herein.

The results are valid only for sample(s) tested and the conditions under which the tests were conducted.

The long-term durability of the façade system is not assessed by these test methods.

VINCI Technology Centre UK Limited is accredited to ISO/IEC 17025:2008 by the United Kingdom Accreditation Service as UKAS Testing Laboratory No. 0057.

VINCI Technology Centre UK Limited is Notified Body No. 1766.

VINCI Technology Centre UK Limited is certified for:

-) ISO 9001:2008 Quality Management System,
-) ISO 14001:2004 Environmental Management System,
-) BS OHSAS 18001:2007 Occupational Health and Safety Management System.

2 SUMMARY AND CLASSIFICATION OF TEST RESULTS

The following summarises the results of the tests carried out. For full details refer to Sections 6, 7 and 8.

2.1 SUMMARY OF TEST RESULTS

TABLE 1

Date	Test number	Test description	Result
24 January 2018	1	Wind resistance – serviceability	Pass
24 - 26 January 2018	2	Wind resistance – cyclic	Pass
26 January 2018	3	Wind resistance – safety	Pass
29 January 2018	4	Watertightness - dynamic	Pass
29 January 2018	5	Impact resistance	Pass

2.2 CLASSIFICATION

TABLE 2

Test	Standard	Classification / Declared value	
Wind resistance	CWCT	±2400 pascals – serviceability ±3600 pascals – safety	
Watertightness - dynamic	CWCT	600 pascals	
Soft body impact resistance	CWCT TN76	120 Nm serviceability – Class 1 500 Nm safety – Negligible risk	
Hard body impact resistance	CWCT TN76	<u>Mortar joints</u> 3 Nm serviceability Class 1 3 Nm safety Negligible risk 6 Nm serviceability Class 1 10 Nm serviceability Class 1 (insulated) Class 2 (cavity) 10 Nm safety Negligible risk	<u>Open joints</u> 3 Nm serviceability Class 1 3 Nm safety Negligible risk 6 Nm serviceability Class 3 10 Nm serviceability Class 4 10 Nm safety Low risk

3 DESCRIPTION OF TEST SAMPLE

3.1 GENERAL ARRANGEMENT

The sample was as shown in the photo below and the drawings included as an appendix to this report.

The following sample description was supplied by T.I. Tiles International.

T.I. Tiles International Ltd Aerobrick mechanical brick slip system.

The following is a product and fixing description of the mechanically fixed Aerobrick brick slip cladding system; a two component system comprising of a Veco Galvalume plate available in flat or cassette format to receive and support clinker brick slips.

The test rig in the attached images comprises two backing walls, a composite panel in this instance Eurobond Rainspan and a proprietary vertical sub-frame assembly. Resulting in two through wall scenarios, a façade and a rainscreen.

The rig by VINCI Technology Centre comprised a constructed backing wall of vertical studs at 600mm c/c c/w a 20mm thick marine plywood front fixing face finish to this we fixed 4no 3m by 1.2m composite cladding panels in a landscape orientation for one half of our test; these were fixed at both ends and one midpoint at 300mm c/c vertically and stacked upon one another to create a 3m by 4.8m flat support wall.

The flat support tray 2.363m by 505mm (standard size) was fixed directly to the front skin only, of the composite cladding panel by “bulb tite” flush rivets. These we installed at 300mm c/c horizontally by 250mm c/c vertically; as can be seen in the attached images. The flat tray comprises punched out hook anchorage points and point load locking tabs strategically located above to engage on the shoulder of the clinker brick slip ensuring a precise and snug fit when installed correctly.

This represents a façade only as there is no vertical free airflow zone; whilst on the second half we created a rainscreen by installing a proprietary vertical sub-frame assembly with T-rails fixed at 600mm c/c and helping hand brackets at 750mm c/c through the marine plywood back into the vertical mainframe studs at 600mm c/c. To this vertical sub-frame, we fixed the cassette format of the Veco Galvalume support plate, this cassette tray measured 2.475m by 517mm and has a continuous 18mmx15mm standoff running around all four edges.

When fixing back to the vertical sub-frame at spans of 600mm c/c we included a supplementary horizontal top-hat profile 15mm deep to for variable to excessive wind loads; the fixing centers for this cassette was 600mm c/c by 250mm c/c with “bulb tite” flush rivets.

Slips can be installed in any orientation both landscape or portrait and all trays cut to size.

One half of each fixing formats was pointed to test as sealed and unsealed both obtaining results confirming the systems strength and robustness qualities.

TEST SAMPLE



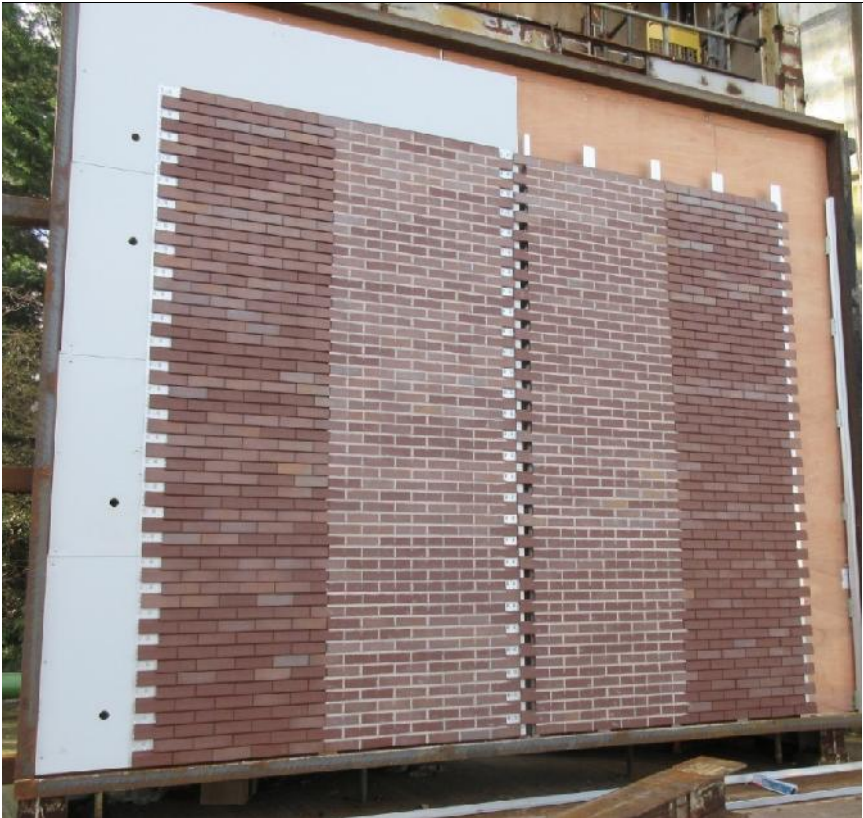
PHOTO 6429

SAMPLE DURING BUILD



PHOTO 6794

TEST SAMPLE DURING BUILD



3.2 CONTROLLED DISMANTLING

During the dismantling of the sample no discrepancies from the drawings were found.

PHOTO 7225

TEST SAMPLE DURING DISMANTLE



PHOTO 7226

TEST SAMPLE DURING DISMANTLE

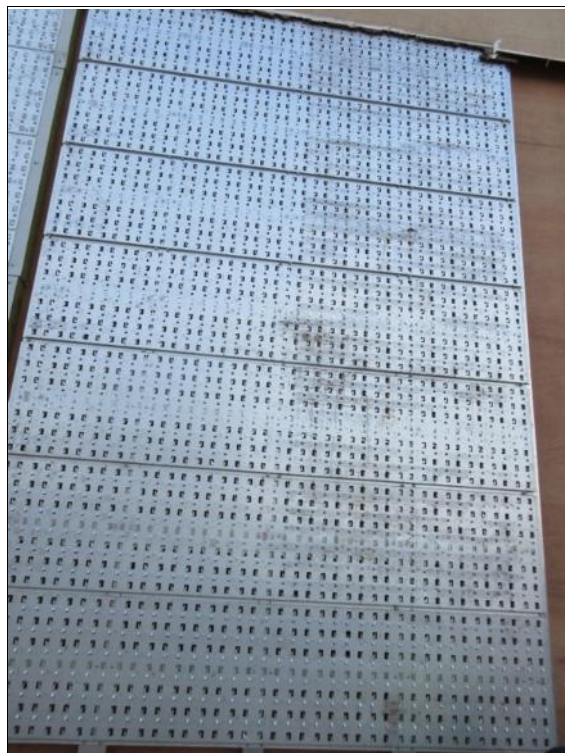


PHOTO 7227

TEST SAMPLE DURING DISMANTLE



PHOTO 7227

TEST SAMPLE DURING DISMANTLE

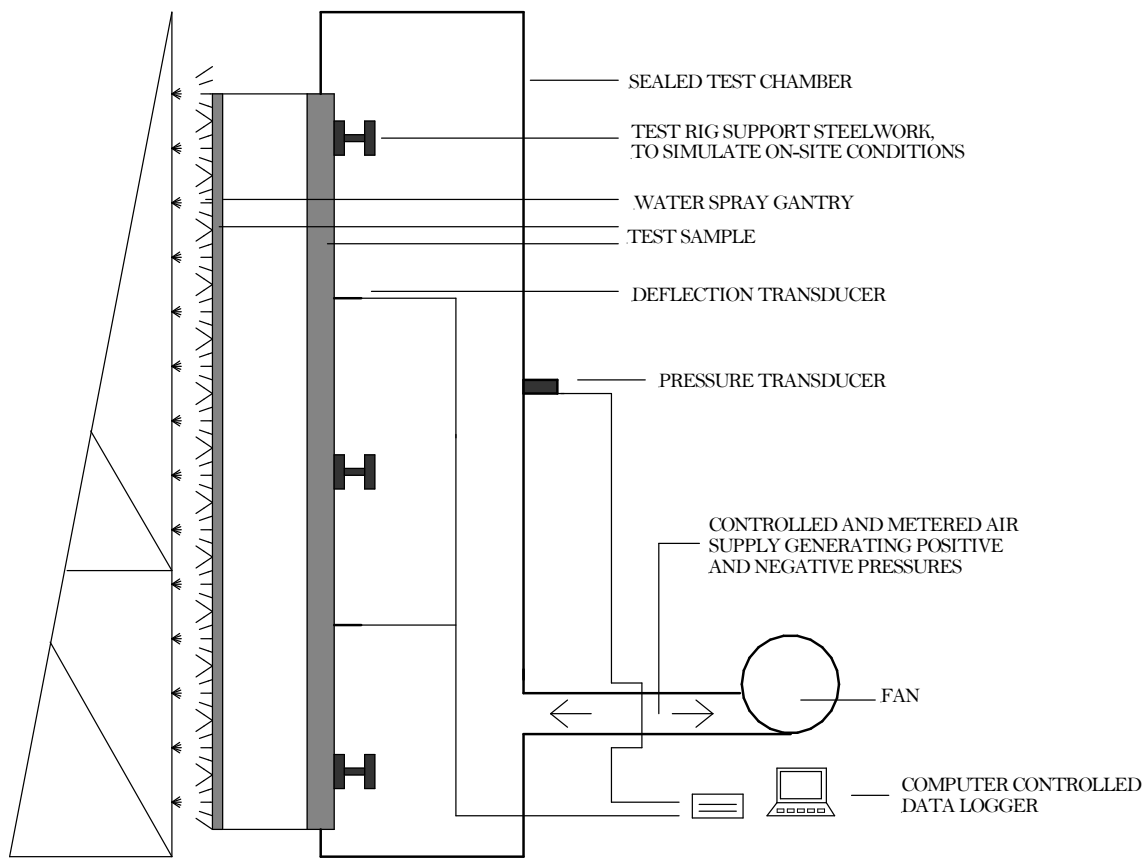


4 TEST RIG GENERAL ARRANGEMENT

The test sample was mounted on a rigid test rig with support steelwork designed to simulate the on-site/project conditions. The test rig comprised a well sealed chamber, fabricated from steel and plywood. A door was provided to allow access to the chamber. Representatives of TI Tiles International installed the sample on the test rig. See Figure 1.

FIGURE 1

TEST RIG SCHEMATIC ARRANGEMENT



SECTION THROUGH TEST RIG

5 TEST SEQUENCE

The test sequence was as follows:

- (1) Wind resistance – serviceability
- (2) Wind resistance – cyclic
- (3) Wind resistance – safety
- (4) Watertightness - dynamic
- (5) Impact resistance

6 WIND RESISTANCE TESTING

6.1 INSTRUMENTATION

6.1.1 Pressure

One static pressure tapping was provided to measure the chamber pressure and was located so that the readings were unaffected by the velocity of the air supply into or out of the chamber.

A pressure transducer, capable of measuring rapid changes in pressure to within 2% was used to measure the differential pressure across the sample.

6.1.2 Deflection

Displacement transducers were used to measure the deflection of principle framing members to an accuracy of 0.1 mm. The gauges were set normal to the sample framework at mid-span and as near to the supports of the members as possible and installed in such a way that the measurements were not influenced by the application of pressure or other loading to the sample. The gauges were located at the positions shown in Figure 2.

6.1.3 Temperature

Platinum resistance thermometers (PRT) were used to measure air temperatures to within 1°C.

6.1.4 General

Electronic instrument measurements were scanned by a computer controlled data logger, which also processed and stored the results.

All measuring instruments and relevant test equipment were calibrated and traceable to national standards.

6.2 FAN

The air supply system comprised a variable speed centrifugal fan and associated ducting and control valves to create positive and negative static pressure differentials. The fan provided essentially constant air flow at the fixed pressure for the period required by the tests and was capable of pressurising at a rate of approximately 600 pascals in one second.

6.3 PROCEDURE

Note: *The open joints between the bricks were sealed for the wind resistance tests only.*

6.3.1 Wind Resistance – serviceability

Three positive pressure differential pulses of 1200 pascals were applied to prepare the sample. The displacement transducers were then zeroed.

The sample was subjected to one positive pressure differential pulse from 0 to 2400 pascals to 0. The pressure was increased in four equal increments each maintained for 15 ±5 seconds. Displacement readings were taken at each increment. Residual deformations were measured on the pressure returning to zero.

Any damage or functional defects were recorded.

The test was then repeated using a negative pressure of -2400 pascals.

6.3.2 Wind Resistance – safety

Three positive pressure differential pulses of 1200 pascals were applied to prepare the sample. The displacement transducers were then zeroed.

The sample was subjected to one positive pressure differential pulse from 0 to 3600 pascals to 0. The pressure was increased as rapidly as possible but not in less than 1 second and maintained for 15 ± 5 seconds. Displacement readings were taken at peak pressure. Residual deformations were measured on the pressure returning to zero.

Any damage or functional defects were recorded.

The test was then repeated using a negative pressure of -3600 pascals.

6.3.3 Wind Resistance – cyclic

The test sample was subjected to pressure pulses as shown in Table 1. The sequence was repeated five times followed by a single application of the design wind pressure (± 2400 pascals). Each pressure cycle took approximately twelve seconds.

TABLE 3

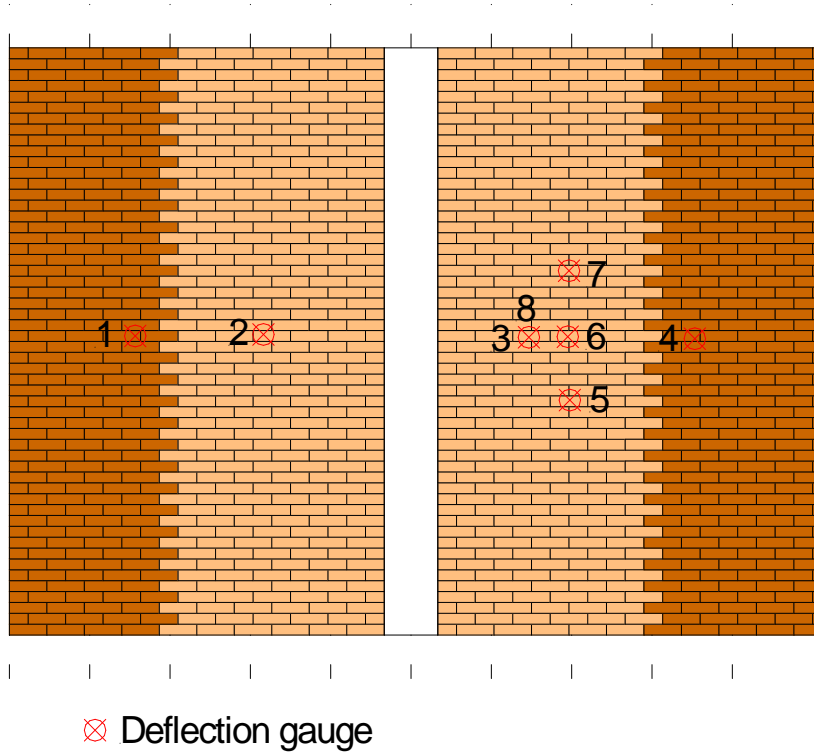
Load as fraction of design wind pressure	Number of cycles	Applied load
90%	1	± 2160 Pa
40%	960	± 960 Pa
60%	60	± 1440 Pa
50%	240	± 1200 Pa
80%	5	± 1920 Pa
70%	14	± 1680 Pa

Any damage or functional defects were recorded.

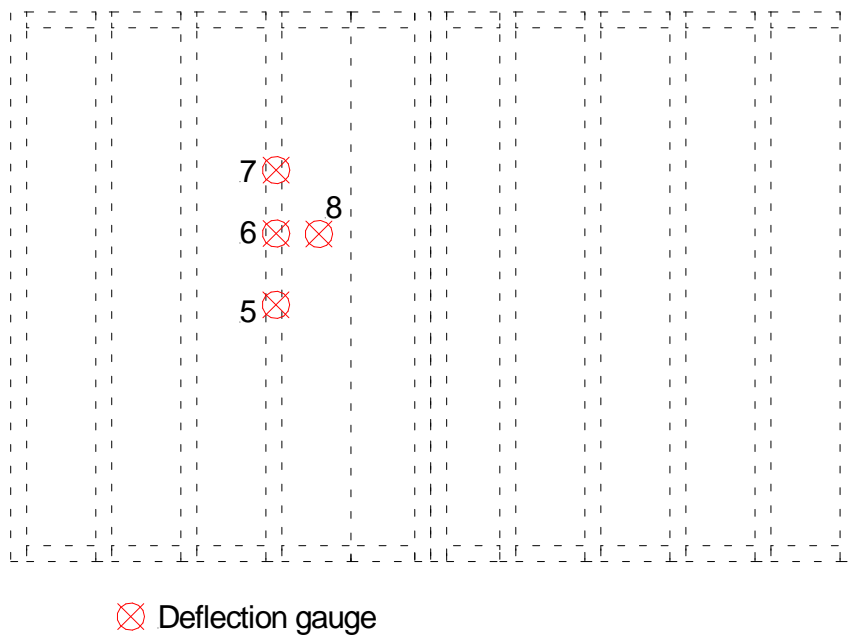
FIGURE 2

DEFLECTION GAUGE LOCATIONS

External View



Internal View



6.4 PASS/FAIL CRITERIA

6.4.1 Calculation of permissible deflection

Gauge number	Member	Span (L) (mm)	Permissible deflection (mm)	Permissible residual deformation
6	Support rail	800	$L/200 = 4.0$	1 mm

6.5 RESULTS

Test 1 (serviceability) Date: 24 January 2018

The deflections measured during the wind resistance test, at the positions shown in Figure 2, are shown in Tables 4 and 5.

Summary Table:

Gauge number	Member	Pressure differential (Pa)	Measured deflection (mm)	Residual deformation (mm)
6	Support rail	2413 -2403	0.1 -0.5	-0.2 0.1

No damage to the test sample was observed.

Ambient temperature = 13°C
 Chamber temperature = 14°C

Test 2 (cyclic) Date: 24 - 26 January 2018

No damage to the sample was observed during the cyclic wind loading test.

Ambient temperature = 4 - 13°C
 Chamber temperature = 5 - 14°C

Test 3 (safety) Date: 26 January 2018

The deflections measured during the structural safety test, at the positions shown in Figure 2, are shown in Table 6.

No damage to the sample was observed.

Ambient temperature = 6°C
 Chamber temperature = 6°C

TABLE 4

WIND RESISTANCE – POSITIVE SERVICEABILITY TEST RESULTS

Position	Pressure (pascals) / Deflection (mm)				
	605	1209	1799	2413	Residual
1	0.6	1.3	1.9	2.5	0.1
2	0.8	1.6	2.5	3.3	0.2
3	0.7	1.5	2.5	3.4	0.2
4	0.7	1.4	2.2	3.0	0.2
5	0.0	0.1	0.2	0.2	0.1
6	0.1	0.1	0.2	0.3	0.0
7	0.0	0.0	0.0	0.1	0.1
8	-0.1	-0.3	-0.5	-0.6	0.0
6 *	0.1	0.1	0.1	0.1	-0.2

*adjusted for movement at the supports

TABLE 5

WIND RESISTANCE – NEGATIVE SERVICEABILITY TEST RESULTS

Position	Pressure (pascals) / Deflection (mm)				
	-595	-1213	-1802	-2403	Residual
1	-0.8	-1.7	-2.9	-4.2	-0.3
2	-1.0	-2.2	-3.7	-5.5	-0.3
3	-0.9	-2.0	-3.4	-5.0	-0.6
4	-0.8	-1.8	-3.2	-4.5	-0.8
5	-0.1	-0.4	-1.1	-1.7	-0.4
6	-0.2	-0.7	-1.4	-2.1	-0.5
7	-0.1	-0.4	-1.0	-1.6	-0.4
8	-0.0	-0.2	-0.6	-1.1	-0.3
6 *	-0.1	-0.2	-0.3	-0.5	0.1

*adjusted for movement at the supports

TABLE 6

WIND RESISTANCE - SAFETY TEST RESULTS

Position	Pressure (pascals) / Deflection (mm)			
	3633	Residual	-3604	Residual
1	3.8	0.2	-6.9	-0.7
2	4.4	0.3	-8.5	-0.7
3	5.1	0.4	-7.7	-0.9
4	5.0	0.6	-7.0	-1.0
5	0.3	0.2	-2.5	-0.8
6	0.8	0.4	-3.2	-0.8
7	0.5	0.5	-2.7	-0.8
8	-1.1	0.1	-1.9	-0.7
6 *	0.4	0.0	-0.6	0.0

*adjusted for movement at the supports

7 WATERTIGHTNESS TESTING

7.1 INSTRUMENTATION

7.1.1 Pressure

One static pressure tapping was provided to measure the chamber pressure and was located so that the readings were unaffected by the velocity of the air supply into or out of the chamber.

A pressure transducer, capable of measuring rapid changes in pressure to within 2% was used to measure the differential pressure across the sample.

7.1.2 Water Flow

An in-line water flow meter was used to measure water supplied to the spray gantry to within 5%.

7.1.3 Temperature

Platinum resistance thermometers (PRT) were used to measure air and water temperatures to within 1 °C.

7.1.4 General

Electronic instrument measurements were scanned by a computer controlled data logger, which also processed and stored the results.

All measuring instruments and relevant test equipment were calibrated and traceable to national standards.

7.2 FAN

A wind generator was mounted adjacent to the external face of the sample and used to create positive pressure differentials during dynamic testing. The wind generator comprised a piston type aero-engine fitted with 4 m diameter contra-rotating propellers.

7.3 WATER SPRAY

The water spray system comprised nozzles spaced on a uniform grid not more than 700 mm apart and mounted approximately 400 mm from the face of the sample. The nozzles provided a full-cone pattern with a spray angle between 90° and 120°. The spray system delivered water uniformly against the exterior surface of the sample.

7.4 PROCEDURE

Water was sprayed onto the sample using the method described above at a flow rate of at least 3.4 litres/m²/minute.

The aero-engine was used to subject the sample to wind of sufficient velocity to produce average deflections in the principle framing members equal to those produced by a static pressure differential of 600 pascals. These conditions were maintained for 15 minutes. Throughout the test the inside of the sample was examined for water penetration.

7.5 PASS/FAIL CRITERIA

There shall be no water penetration to the internal face of the sample throughout testing. At the completion of the test there shall be no standing water in locations intended to remain dry.

DYNAMIC WIND GENERATOR



7.6 RESULTS

Test 4

Date: 29 January 2018

No water leakage was observed through the bricks with the mortar joints.

No water leakage was observed through the open jointed bricks with the insulated panels.

Water leakage observed through the open jointed bricks was mainly confined to the support panels and drained out at the base of the cavity during and after testing.

Chamber temperature = 6°C
Ambient temperature = 6°C
Water temperature = 9°C

INSPECTION AREA FOR DYNAMIC WATER TEST



8 IMPACT TESTING

8.1 IMPACTOR

8.1.1 Soft body

The soft body impactor comprised a canvas spherical/conical bag 400 mm in diameter filled with 3 mm diameter glass spheres with a total mass of 50 kg suspended from a cord at least 3 m long.

PHOTO 6910

SOFT BODY IMPACTOR



8.1.2 Hard body

The hard body impactor was a solid steel ball of 50 mm or 62.5 mm diameter and approximate mass of 0.5 kg or 1.0 kg.

PHOTO 6949

HARD BODY IMPACTOR



8.2 PROCEDURE

8.2.1 Soft body

The impactor almost touched the face of the sample when at rest. It was swung in a pendular movement to hit the sample normal to its face. The test was performed at the locations shown in Figure 3. The impact energies were 120 Nm for serviceability and 500 Nm for safety.

8.2.2 Hard body

The impactor almost touched the face of the sample when at rest. It was swung in a pendular movement to hit the sample normal to its face. The test was performed at the locations shown in Figure 4. The impact energies were 3 Nm, 6 Nm and 10 Nm.

8.3 PASS/FAIL CRITERIA

Note: Tables 1 to 2 are taken from CWCT TN76.

Table 1 - Classes for serviceability performance

Class	Definition	Explanation/Examples
1	No damage.	No damage visible from 1m, and Any damage visible from closer than 1m unlikely to lead to significant deterioration.
2	Surface damage of an aesthetic nature which is unlikely to require remedial action.	Dents or distortion of panels not visible from more than 5m (note visibility of damage will depend on surface finish and lighting conditions – damage will generally be more visible on reflective surfaces), and Any damage visible from closer than 5m unlikely to lead to significant deterioration.
3	Damage that may require remedial action or replacement of components to maintain appearance or long term performance but does not require immediate action.	Dents or distortion of panels visible from more than 5m, or Spalling of edges of panels of brittle materials, or Damage to finishes that may lead to deterioration of the substrate.
4	Damage requiring immediate action to maintain appearance or performance. Remedial action may include replacement of a panel but does not require dismantling or replacement of supporting structure.	Significant cracks in brittle materials e.g. cracks that may lead to parts of tile falling away subsequent to test, or Fracture of panels causing significant amounts of material to fall away during test.
5	Damage requiring more extensive replacement than 4.	Buckling of support rails.

Table 2 - Classes for safety performance

Class	Explanation/examples
Negligible risk	No material dislodged during test, and No damage likely to lead to materials falling subsequent to test, and No sharp edges produced that would be likely to cause severe injury to a person during impact, and Cladding not penetrated by impactor.
Low risk	Maximum mass of falling particle 50g, and Maximum mass of particle that may fall subsequent to impact 50g, and No sharp edges produced that would be likely to cause severe injury during impact.
Moderate risk	Maximum mass of falling particle less than 500g, and Maximum mass of particle that may fall subsequent to impact less than 500g, and Cladding not penetrated by impact, and No sharp edges produced that would be likely to cause severe injury during impact.
High risk	Maximum mass of falling particle greater than 500g, or Cladding penetrated by impact, or Sharp edges produced that would be likely to cause severe injury during impact.

8.4 RESULTS

Test 5

Date: 29 January 20178

The impact test results are shown in Tables 7 and 8.

Ambient temperature = 6°C

8.4.1 Soft body impacts

No damage was observed throughout the soft body serviceability and safety impact tests.

8.4.2 Hard body impacts

3 Nm impacts

– No damage observed.

6 Nm impacts

– No damage observed on the bricks with mortar joints. Hairline cracks were observed on the brick face on the open jointed bricks.

10 Nm impacts

– Minor indent and chip on brick face on bricks with mortar joints and cavity behind. Crack observed along a mortar joint and minor fallout in mortar joint in one location.

– No damage observed to bricks with mortar joints and insulation behind.

– Cracks and minor fragments from bricks without mortar joints.

PHOTO 6915

6 Nm HARD BODY IMPACT - CRACK IN BRICK WITHOUT MORTAR



PHOTO 6924

10 Nm HARD BODY IMPACT - CRACK IN MORTAR JOINT



PHOTO 6925

10 Nm HARD BODY IMPACT - SMALL CHIP FROM BRICK FACE



PHOTO 6928

10 Nm HARD BODY IMPACT - SMALL INDENT IN BRICK FACE



PHOTO 6944

10 Nm HARD BODY IMPACT - SMALL MORTAR JOINT FALLOUT

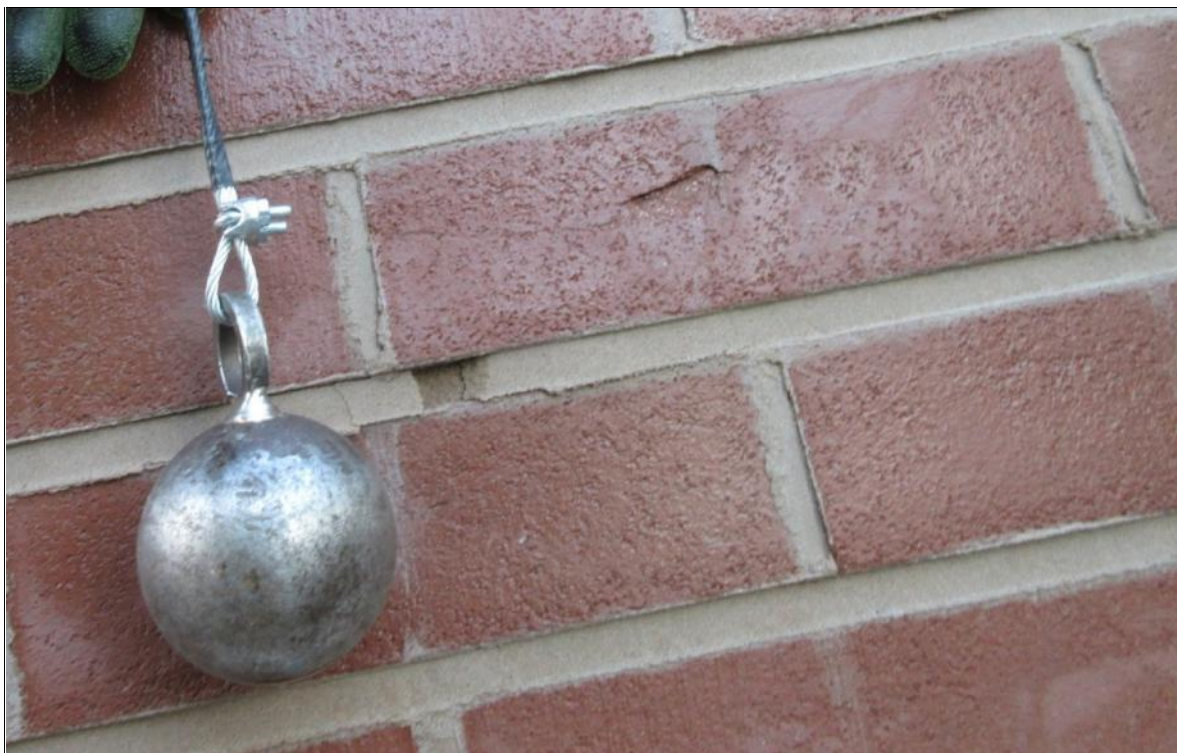


PHOTO 7055

10 Nm HARD BODY IMPACTS ON UN-INSULATED WALL



PHOTO 7062

10 Nm HARD BODY IMPACTS ON INSULATED WALL



9 APPENDIX - DRAWINGS

The following 5 unnumbered pages are copies of TI Tiles International Limited drawings numbered:

T101 rev 0,

T102 rev 0,

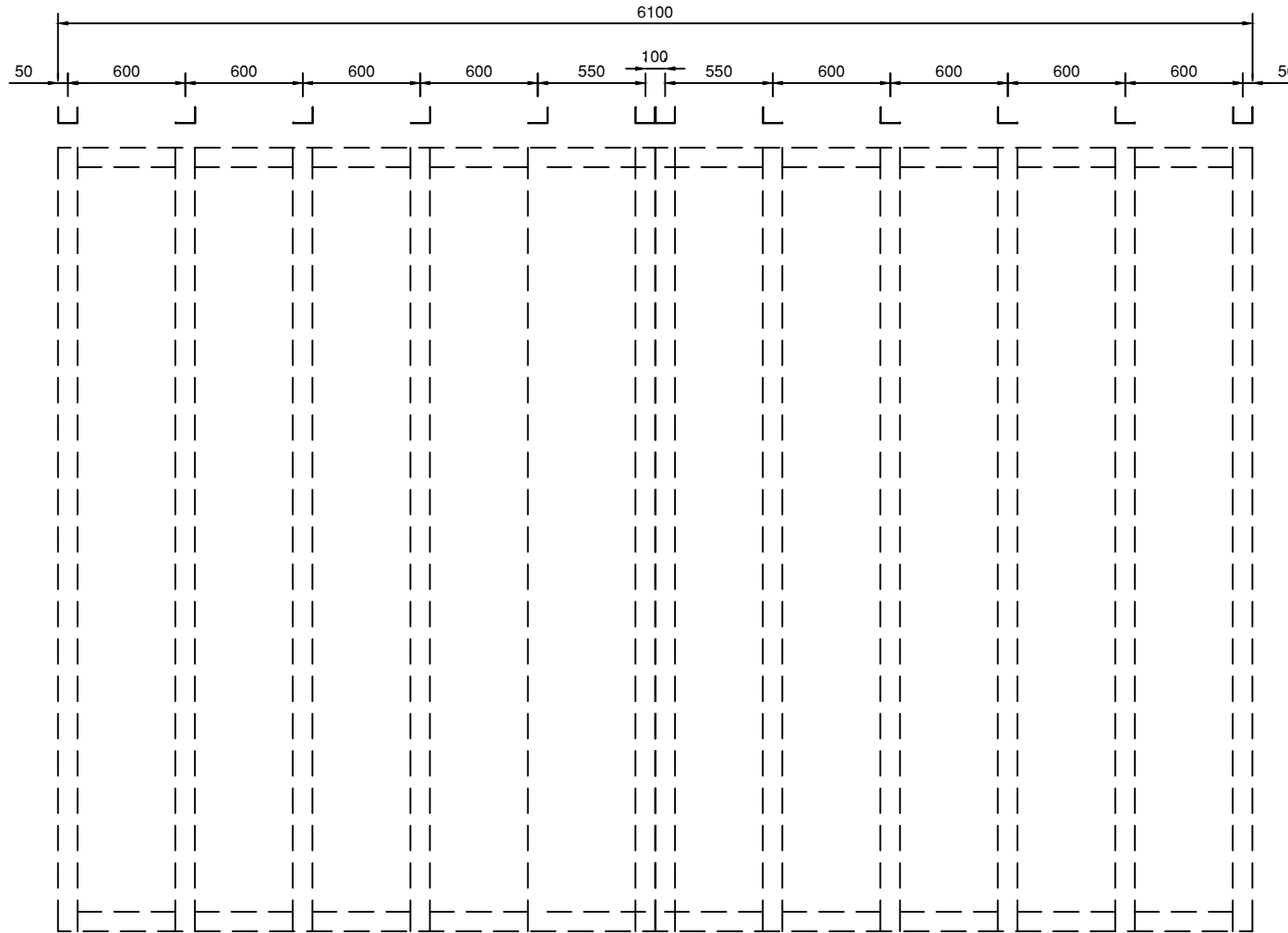
T103 rev 0,

T104 rev 0,

T105 rev 0.

END OF REPORT

Steel By Vinci-UK: Dims and materials Gauge to be confirmed by Vinci



Steel Layout For Test Rig (6m x 4m):

100mm Wide Vertical studs at 600mm Centres -

80 x 100 x 80mm U Channel to be incorporated at each end and 2No.

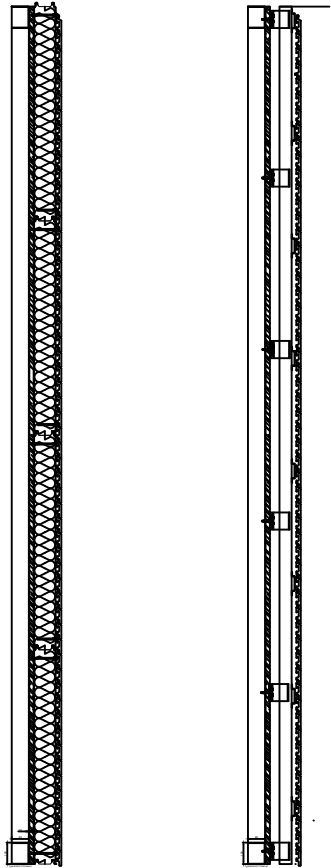
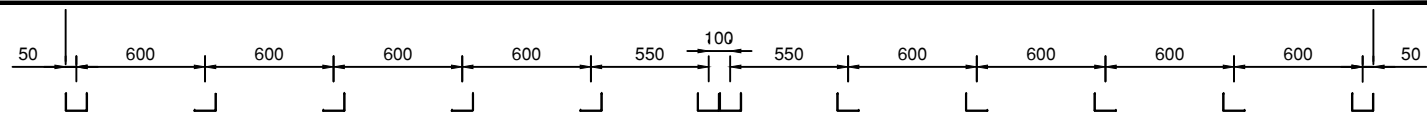
intermediate rails, 100 x 80mm Angles to be incorporated at all other

areas

Drawing Title	Test Rig Steel Layout		
Scale	n.t.s	Date Drawn	Sept 2018
Drawing Number	T101	Revision	0

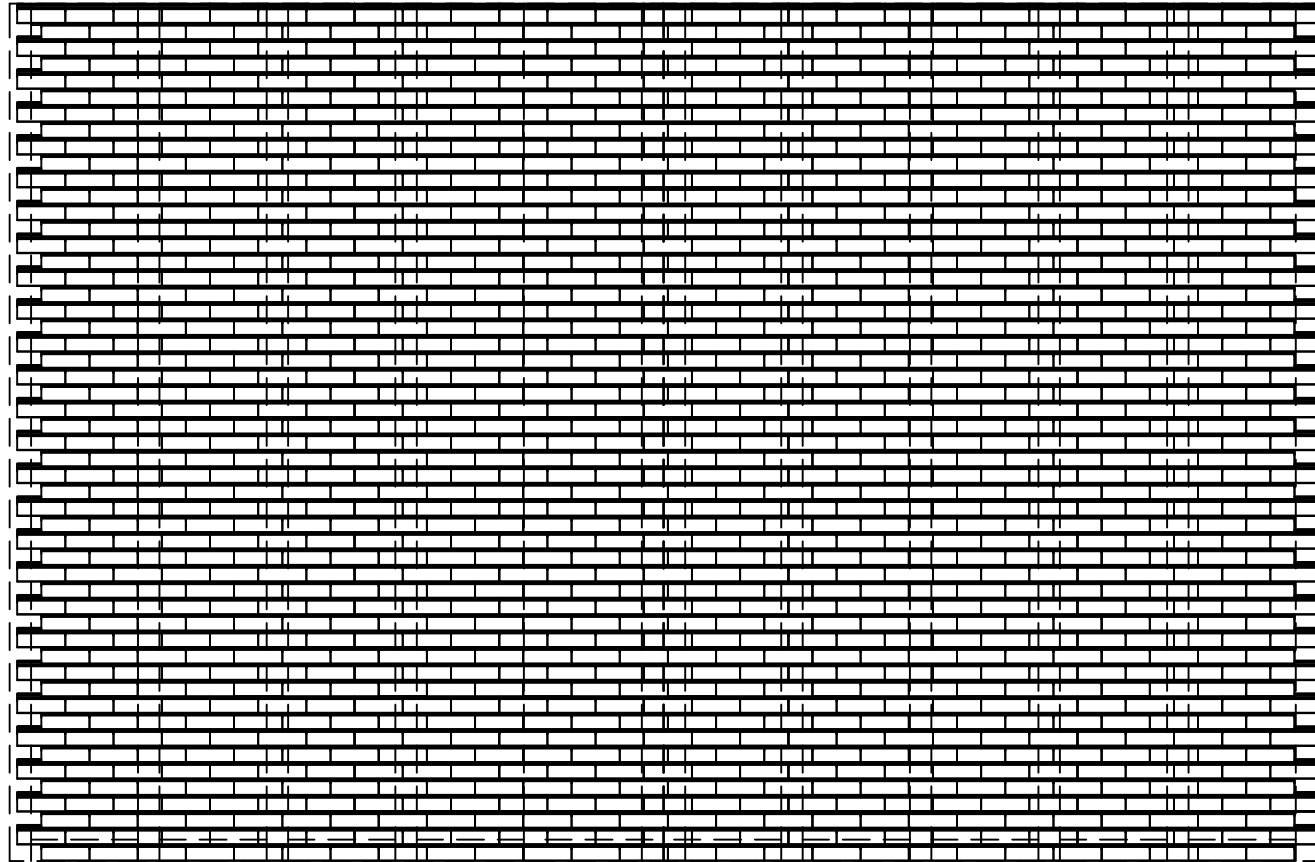
dynamic facades
by ti tiles international ltd

london tel +44 (0) 20 8735 9100
glasgow tel +44 (0) 8700 500981
email sales@tilesint.co.uk web www.tilesint.co.uk

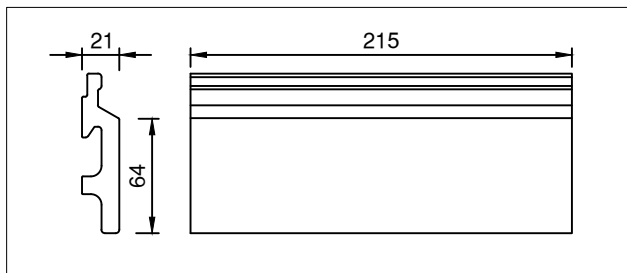
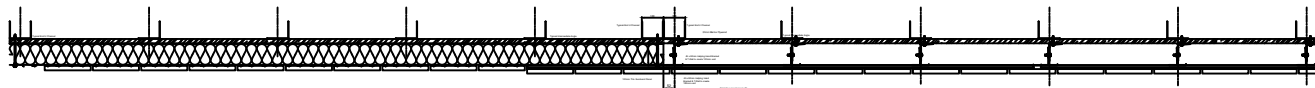


Section 1

Section 2



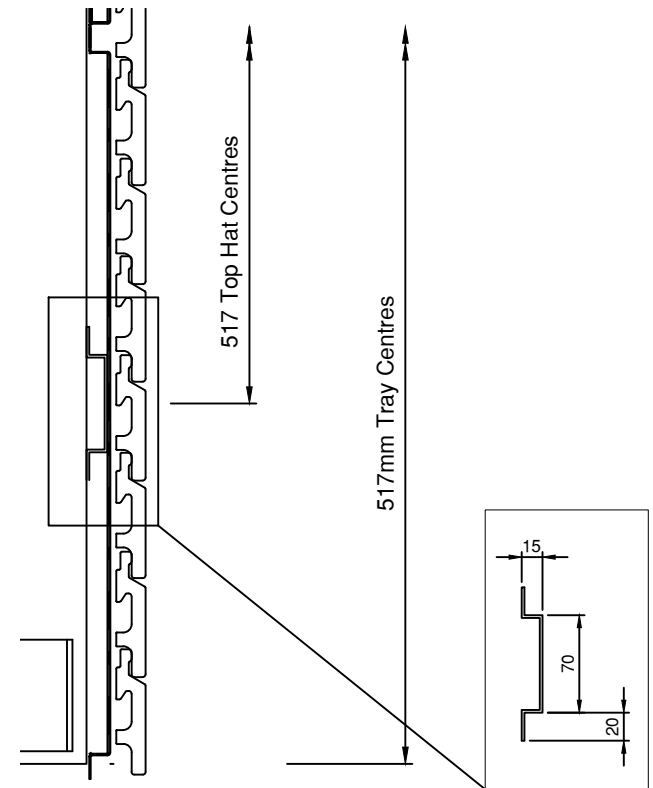
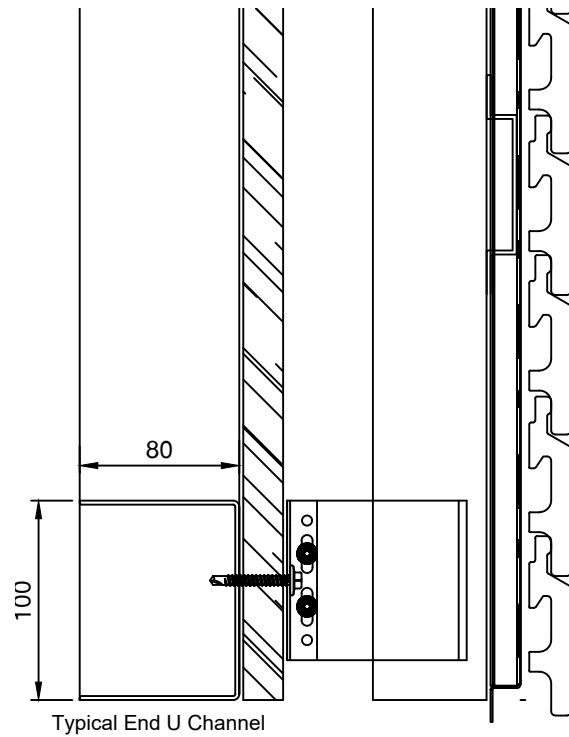
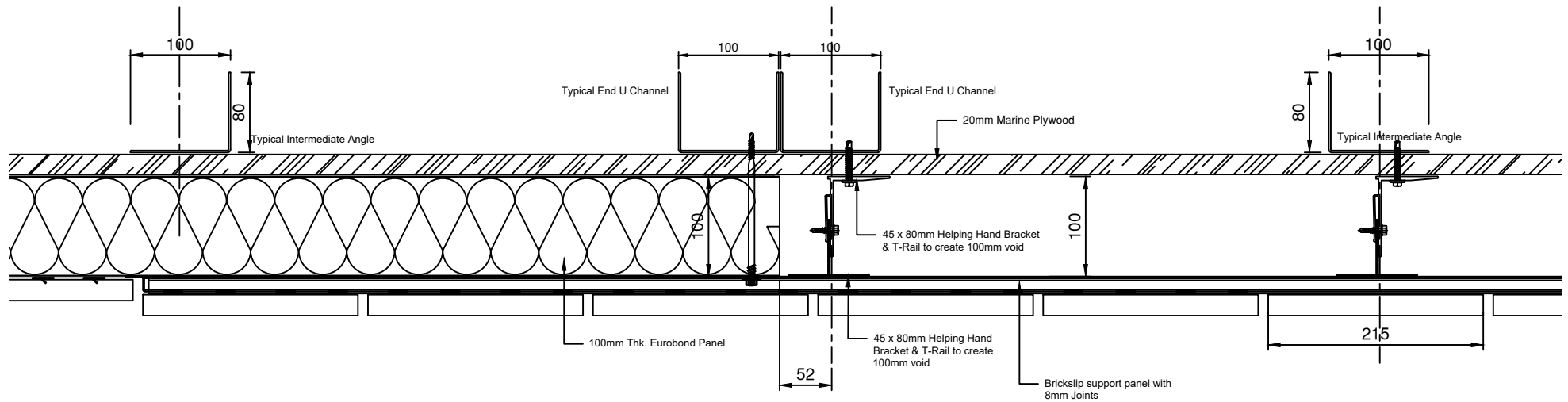
Brick Slip Panel Layout



Drawing Title	Test Rig Top Hat & Rail Layout		
Scale	n.t.s	Date Drawn	Sept 2018
Drawing Number	T103	Revision	0

dynamic facades
by ti tiles international ltd

london tel +44 (0) 20 8735 9100
glasgow tel +44 (0) 8700 500981
email sales@tilesint.co.uk web www.tilesint.co.uk



Fixing Requirements

- : Helping Hand To Steelwork - 2No. 70mm Heavy Steel S/S Self Driller per bracket
- : T-Rail to bracket - 1No. 25mm Light Steel S/S Self Driller per bracket
- : Brickslip Panel to Helping hand bracket - Sealed Rivets at 150mm Centres

Drawing Title	Test Rig Plan Details		
Scale	n.t.s	Date Drawn	Sept 2018
Drawing Number	T105	Revision	0

dynamic facades
by ti tiles international ltd

london
tel +44 (0) 20 8735 9100
email sales@tilesint.co.uk

glasgow
tel +44 (0) 8700 500981
web www.tilesint.co.uk



VINCI Technology Centre UK Limited
Stanbridge Road
Leighton Buzzard
Bedfordshire
LU7 4QH
UK

01525 859000

info@technology-centre.co.uk

www.technology-centre.co.uk