

The logo for Spec-Brik, featuring a red square with a white horizontal bar and the text "Spec-Brik" in a bold, sans-serif font, followed by a registered trademark symbol.

Spec-Brik®

The logo for Concrete Products Group, consisting of a stylized 'CP' monogram inside a circle, followed by the text "CONCRETE PRODUCTS GROUP" in a bold, sans-serif font.

**CONCRETE
PRODUCTS
GROUP**

Spec-Brik Veneer

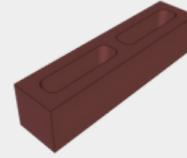
**Cost-Effective
Masonry Veneers**

Spec-Brik Veneer

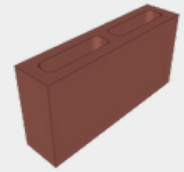
With Spec-Brik veneers, you have a choice of 12 complimentary standard blended colors, and custom colors are also available. These colors are made to national standards and rigorously checked to assure that you get the color you select, wherever you may be building your project.



SPEC-BRIK® Veneer is available in two sizes



4"x4"x16"



4"x8"x16"

*Dimensions are nominal

Applications

- Concrete masonry veneers with brick aesthetics (4" unit width) in all Climate Zones.

Features

- Made with integral water repellent for superior moisture penetration resistance

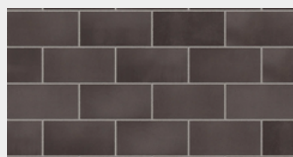
Construction Efficiency

- Much more efficient and cost-effective than constructing clay brick walls with frame, masonry or other back-up walls

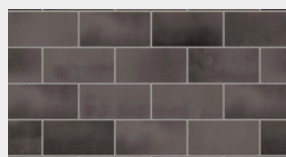
Aesthetics

- Scale: 4"x16" or 8"x16" face dimension
- Colors are consistent nationwide.

SPEC-BRIK® VENEER is available in 12 Standard Colors (custom colors are available)



Basalt Blend



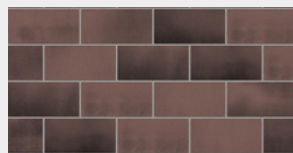
Chesapeake Blend



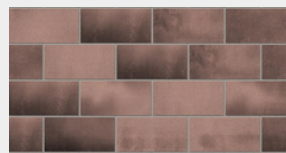
Delaware Blend



Dixon Blend



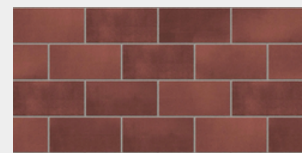
Houston Blend



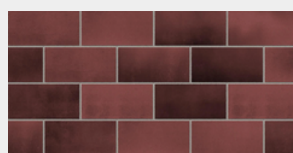
Jefferson City Blend



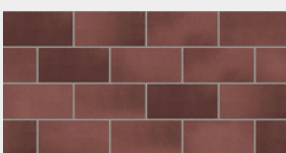
Panama City Blend



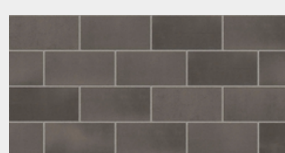
Philadelphia Blend



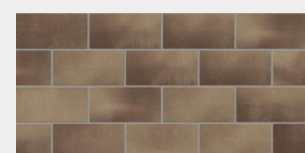
Stanton Blend



St. Cloud Blend



Flint Blend



Gardner Blend

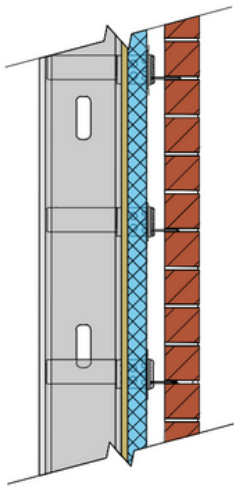


Technical Documents

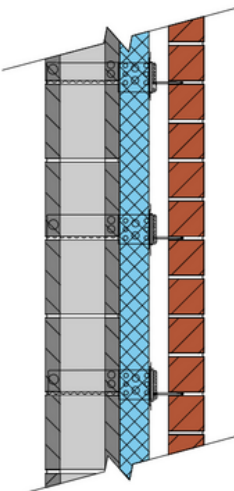


Energy Code Compliance

SPEC-BRIK Veneers are suitable for all energy climate zones when properly designed. With proper anchor-age, the veneer wall system will meet structural requirements even when built with thick layers of continuous insulation, and a two-inch air gap. To provide context, up to 4 inches of insulation and a 2 inch airspace may be required in Zone 8.



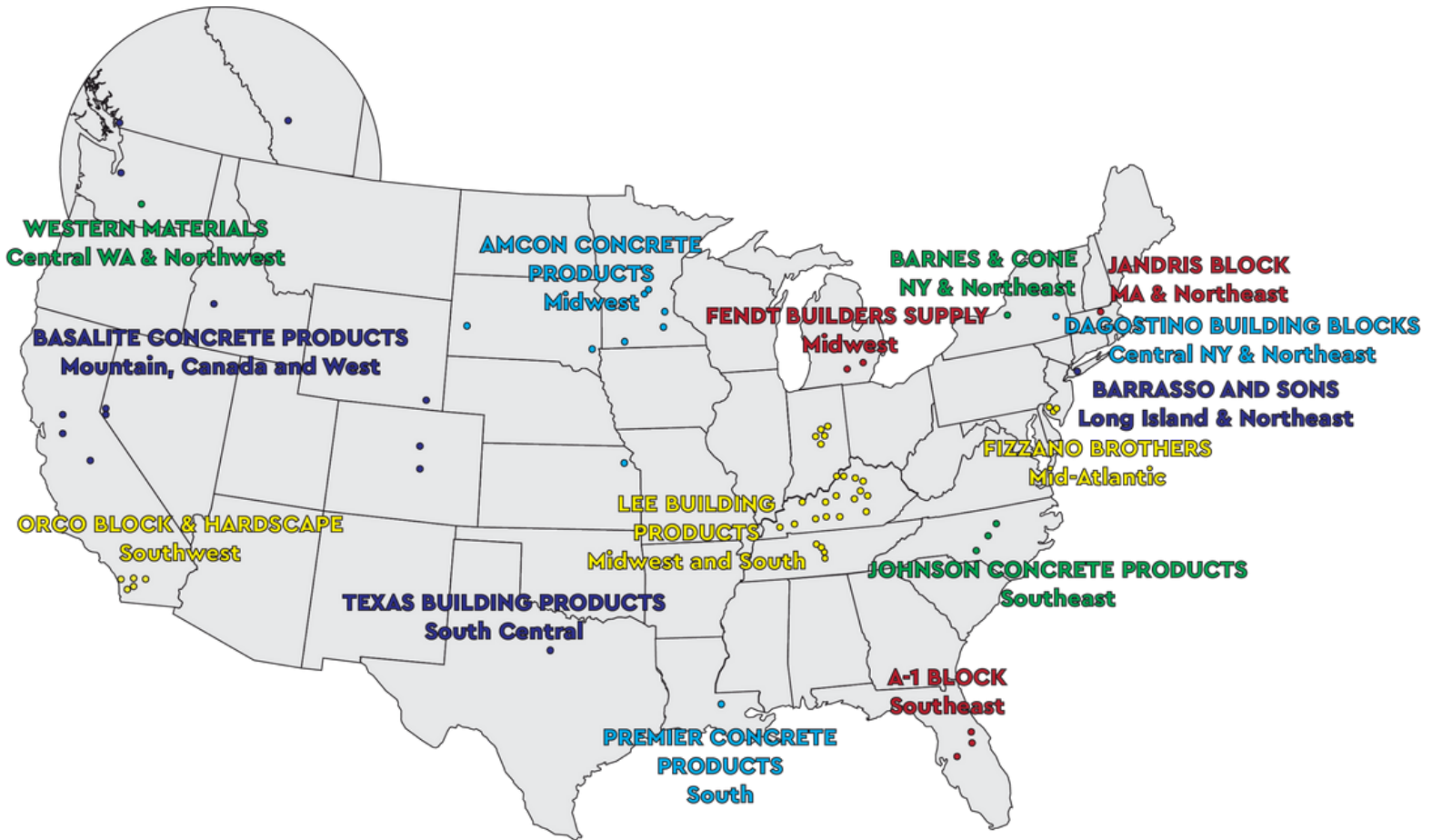
Metal Frame Insulation:	Compliance Method	2012 and 2015 IECC Max Climate Zone
2" EPS rigid board R-8 (Continuous Insulation) Blanket Insulation R-13	Prescriptive R-Value Table	Zone 8 Zone 6 (Group R) Zone 8 (R) requires R-17.5ci
3" XPS rigid board R-15 (Continuous Insulation) Assembly U-Factor: 0.051	Prescriptive U-Factor Table	Zone 7 Zone 7 (Group R) Zone 8 requires U-0.045
3" XPS rigid board R-16.8 (Continuous Insulation) Assembly U-Factor: 0.047	Prescriptive U-Factor Table	Zone 7 Zone 7 (Group R) Zone 8 requires U-0.045
4" EPS Rigid Board – R-20 (Continuous Insulation) Assembly U-Factor: 0.041	Prescriptive U-Factor Table	Zone 8 Zone 8 (Group R)



Masonry Cavity Wall 8x8x16 backup wall Insulation:	Compliance Method	2012 and 2015 IECC Max Climate Zone
3" XPS rigid board R-15 (Continuous Insulation) Assembly U-Factor: 0.053	Prescriptive U-Factor Table	Zone 7 Zone 7 (Group R) Zone 8 requires U-0.045
3" XPS rigid board R-16.8 (Continuous Insulation) Assembly U-Factor: 0.049	Prescriptive U-Factor Table	Zone 7 Zone 7 (Group R) Zone 8 requires U-0.045
4" EPS Rigid Board – R-20 (Continuous Insulation) Assembly U-Factor: 0.042	Prescriptive U-Factor Table	Zone 8 Zone 8 (Group R)

Service and Support

The Concrete Products Group LLC (CPG) consists of regional market leaders in the concrete products industry. CPG provides industry leading support and service throughout the nation. CPG is organized to provide consistent, top-quality products to regional and national customers.



800-789-0872

www.concreteproductsgroup.com

CPG Members

A-1 BLOCK
1617 South
Division Avenue
Orlando, FL 32805

AMCON CONCRETE
PRODUCTS, LLC
2025 Centre Pointe Blvd.,
Suite 300
Mendota Heights, MN 55120-1221

BARNES & CONE
P.O. Box 280
5894 Court St. Rd.
Syracuse, NY
13206-0280

BASALITE CONCRETE
PRODUCTS LLC
605 Industrial Way
Dixon, CA
95620

BARRASSO AND SONS INC
160 Floral Park Street
Islip Terrace, NY
11752

DAGOSTINO BUILDING
BLOCKS, INC.
1111 Altamont Avenue
Schenectady, NY 12303

FENDT BUILDERS
SUPPLY
22005 Gill Rd,
Farmington, MI 48335

FIZZANO BROTHERS
CONCRETE PRODUCTS, INC.
1776 Chester Pike
Crum Lynne, PA
19022-1299

JANDRIS BLOCK
202 High St.
Gardner, MA
01440

JOHNSON CONCRETE
COMPANY
217 Klumac Road
Salisbury, NC 28144

LEE BUILDING
PRODUCTS
4301 Industrial Drive
Bowling Green, KY
42101

PREMIER CONCRETE CONCRETE
PRODUCTS, INC
38200 Hwy 16
Denham Springs, LA
70706

ORCO BLOCK &
HARDSCAPE
11100 Beach Blvd.
Stanton, CA
90680-0129

TEXAS BUILDING
PRODUCTS
3261 Highway 108
Strawn, Texas 76454

WESTERN MATERIALS
COMPANY
1202 South First Street
Yakima, WA 98901