

The logo for Spec-Brik, featuring a red square with a white horizontal bar and the text "Spec-Brik" in a bold, sans-serif font, followed by a registered trademark symbol.

**Spec-Brik®**



**Spec-Brik Veneer**

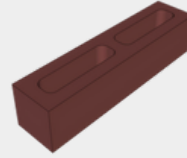
**Cost-Effective  
Masonry Veneers**

# Spec-Brik Veneer

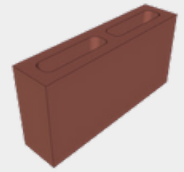
With Spec-Brik veneers, you have a choice of 12 complimentary standard blended colors, and custom colors are also available. These colors are made to national standards and rigorously checked to assure that you get the color you select, wherever you may be building your project.



SPEC-BRIK® Veneer is available in two sizes



4"x4"x16"



4"x8"x16"

\*Dimensions are nominal

## Applications

- Concrete masonry veneers with brick aesthetics (4" unit width) in all Climate Zones.

## Features

- Made with integral water repellent for superior moisture penetration resistance

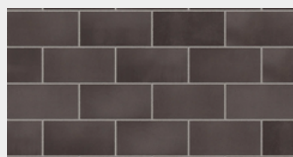
## Construction Efficiency

- Much more efficient and cost-effective than constructing clay brick walls with frame, masonry or other back-up walls

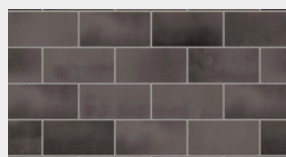
## Aesthetics

- Scale: 4"x16" or 8"x16" face dimension
- Colors are consistent nationwide.

SPEC-BRIK® VENEER is available in 12 Standard Colors (custom colors are available)



Basalt Blend



Chesapeake Blend



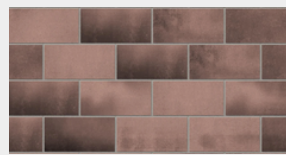
Delaware Blend



Dixon Blend



Houston Blend



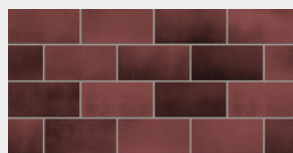
Jefferson City Blend



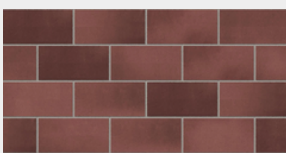
Panama City Blend



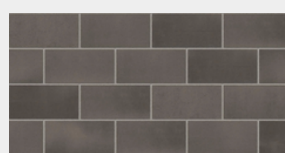
Philadelphia Blend



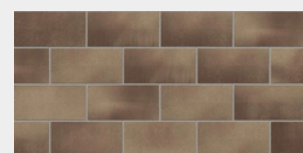
Stanton Blend



St. Cloud Blend



Flint Blend



Gardner Blend

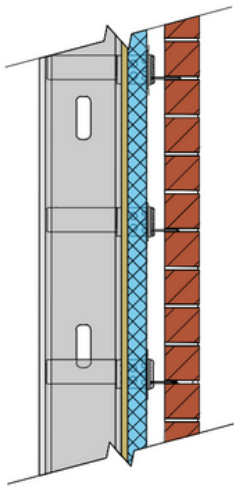


## Technical Documents

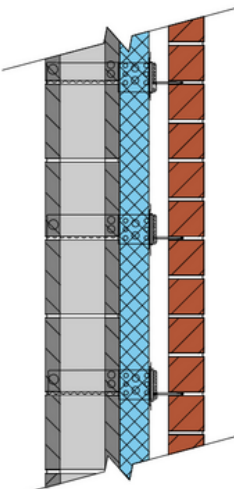


## Energy Code Compliance

SPEC-BRIK Veneers are suitable for all energy climate zones when properly designed. With proper anchor-age, the veneer wall system will meet structural requirements even when built with thick layers of continuous insulation, and a two-inch air gap. To provide context, up to 4 inches of insulation and a 2 inch airspace may be required in Zone 8.



Metal Frame Insulation:	Compliance Method	2012 and 2015 IECC Max Climate Zone
2" EPS rigid board R-8 (Continuous Insulation) Blanket Insulation R-13	Prescriptive R-Value Table	Zone 8 Zone 6 (Group R) Zone 8 (R) requires R-17.5ci
3" XPS rigid board R-15 (Continuous Insulation) Assembly U-Factor: 0.051	Prescriptive U-Factor Table	Zone 7 Zone 7 (Group R) Zone 8 requires U-0.045
3" XPS rigid board R-16.8 (Continuous Insulation) Assembly U-Factor: 0.047	Prescriptive U-Factor Table	Zone 7 Zone 7 (Group R) Zone 8 requires U-0.045
4" EPS Rigid Board – R-20 (Continuous Insulation) Assembly U-Factor: 0.041	Prescriptive U-Factor Table	Zone 8 Zone 8 (Group R)



Masonry Cavity Wall 8x8x16 backup wall Insulation:	Compliance Method	2012 and 2015 IECC Max Climate Zone
3" XPS rigid board R-15 (Continuous Insulation) Assembly U-Factor: 0.053	Prescriptive U-Factor Table	Zone 7 Zone 7 (Group R) Zone 8 requires U-0.045
3" XPS rigid board R-16.8 (Continuous Insulation) Assembly U-Factor: 0.049	Prescriptive U-Factor Table	Zone 7 Zone 7 (Group R) Zone 8 requires U-0.045
4" EPS Rigid Board – R-20 (Continuous Insulation) Assembly U-Factor: 0.042	Prescriptive U-Factor Table	Zone 8 Zone 8 (Group R)