



Spec-Brik



**CONCRETE**  
PRODUCTS GROUP

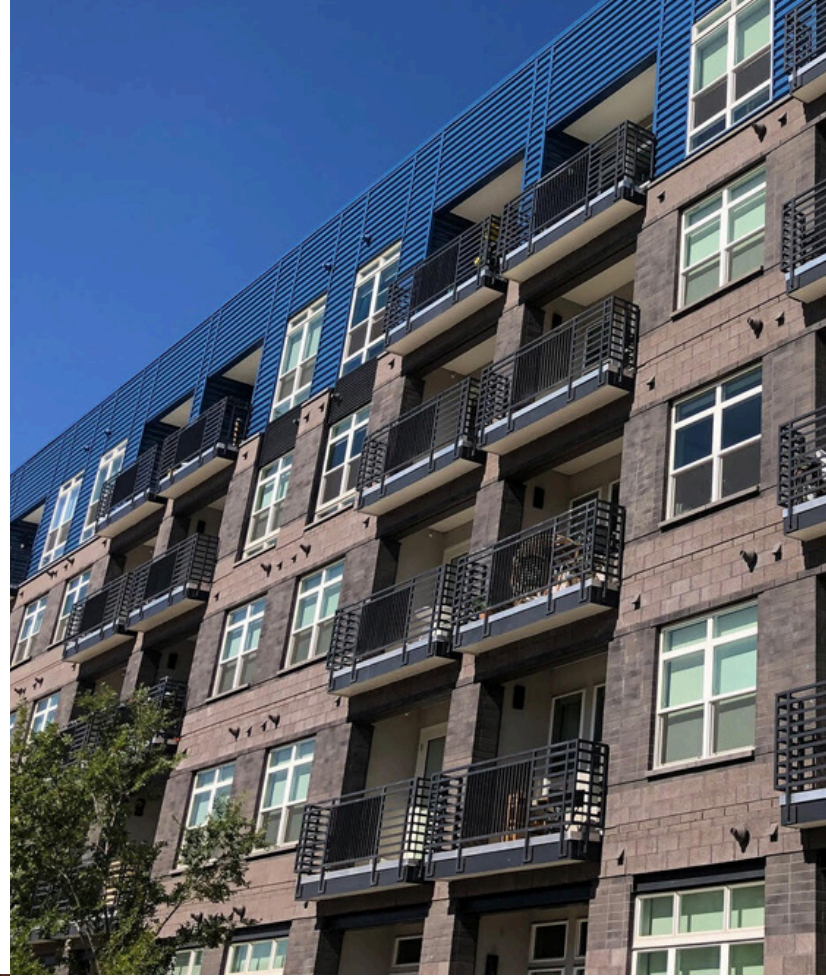
**The Beauty of Brick**  
**Concrete Masonry Value**

# Spec-Brik

Spec-Brik is a half high (4"x16" nominal face dimension) concrete masonry unit with brick aesthetics that is perfect for partially or fully grouted single wythe walls or veneers.

## Applications

- Single wythe load bearing walls with brick aesthetics.
- Concrete masonry veneers with brick aesthetics (4" unit width) in all Climate Zones.
- Double exposed masonry single wythe walls with insulation inserts or foamed in place insulation in Climate Zones 1-2.
- Exterior exposed masonry single wythe walls with interior insulation, furring and wall-board in all Climate Zones.



## Features

- ASTM C90 - Load Bearing Masonry
- Suitable for either full or partial grout construction be constructed as a fully grouted wall to increase fire resistance up to in excess of four hour rating.
- Made with integral water repellent and optional Water Control Technology web design for superior moisture penetration resistance.

## Construction Efficiency

- More efficient and cost-effective than constructing clay brick walls with frame, masonry or other back-up walls
- Utilities (plumbing and electrical) readily fit in unit cores and horizontal voids.
- Offered in 4", 6", 8", 10" and 12" widths and a variety of fittings.

## Aesthetics

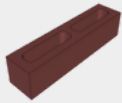
- Scale: 4"x16" face dimension
- Colors: Available in 12 standard brick blend colors; consistent nationwide.



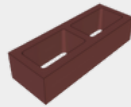
## Design Resources



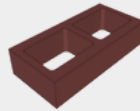
SPEC-BRIK® is available for veneer and single wythe walls (other sizes available)



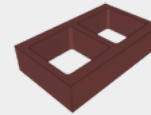
4"x4"x16"



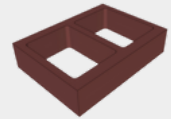
6"x4"x16"



8"x4"x16"



10"x4"x16"



12"x4"x16"

\*Dimensions are nominal

SPEC-BRIK® is available in 12 Standard Colors (custom colors are available)



Basalt Blend



Flint Blend



Chesapeake Blend



Houston Blend



Panama City Blend



Jefferson City Blend



Dixon Blend



Gardner Blend



St. Cloud Blend



Stanton Blend



Philadelphia Blend

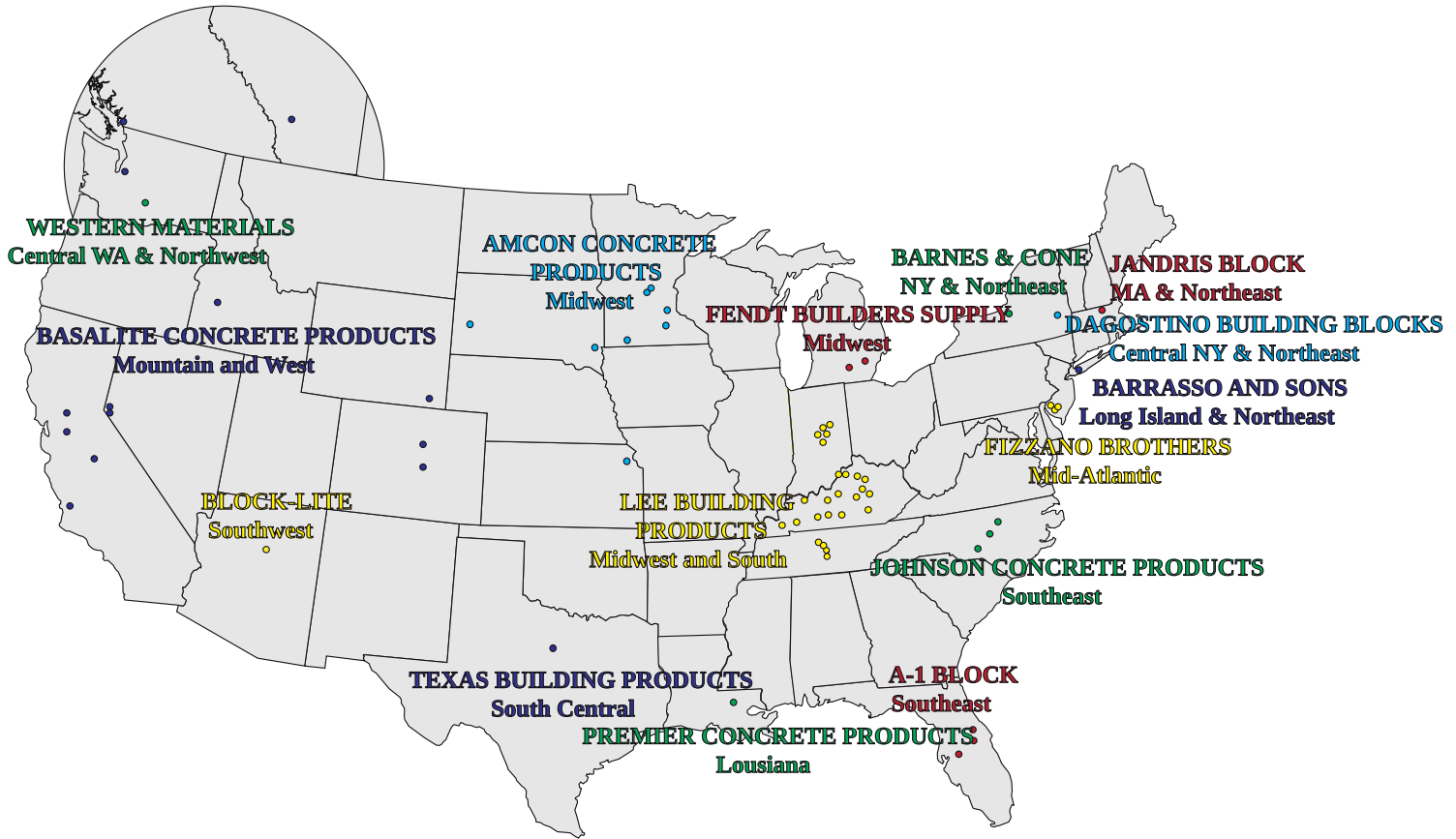


Delaware Blend



## Service and Support

The Concrete Products Group LLC (CPG) consists of regional market leaders in the concrete products industry. CPG provides industry leading support and service throughout the nation. CPG is organized to provide consistent, top-quality products to regional and national customers.



800-789-0872

[www.concreteproductsgroup.com](http://www.concreteproductsgroup.com)

### CPG Members

A-1 BLOCK  
1617 South  
Division Avenue  
Orlando, FL 32805

TCC MATERIALS  
2025 Centre Pointe Blvd.,  
Suite 300  
Mendota Heights, MN 55120-1221

BARNES & CONE  
P.O. Box 280  
5894 Court St. Rd.  
Syracuse, NY  
13206-0280

BASALITE CONCRETE  
PRODUCTS LLC  
605 Industrial Way  
Dixon, CA  
95620

BARRASSO AND SONS INC  
160 Floral Park Street  
Islip Terrace, NY  
11752

BLOCK-LITE  
3900 E Industrial Dr,  
Flagstaff, AZ 86004

DAGOSTINO BUILDING  
BLOCKS, INC.  
1111 Altamont Avenue  
Schenectady, NY 12303

FENDT BUILDERS  
SUPPLY  
22005 Gill Rd,  
Farmington, MI 48335

FIZZANO BROTHERS  
CONCRETE PRODUCTS, INC.  
1776 Chester Pike  
Crum Lynne, PA  
19022-1299

JANDRIS BLOCK  
202 High St.  
Gardner, MA 01440

JOHNSON CONCRETE  
COMPANY  
217 Klumac Road  
Salisbury, NC 28144

LEE BUILDING  
PRODUCTS  
4301 Industrial Drive  
Bowling Green, KY  
42101

PREMIER CONCRETE CONCRETE  
PRODUCTS, INC  
38200 Hwy 16  
Denham Springs, LA  
70706

TEXAS BUILDING  
PRODUCTS  
3261 Highway 108  
Strawn, Texas 76454

WESTERN MATERIALS  
COMPANY  
1202 South First Street  
Yakima, WA 98901