

## 1 Download the app



## 2 Unbox and prepare components

Before installation, open the package and identify all components. Lay them out for easy access.

### Hardware components:

- BLACK X Euro Profile Smart Lock (1x)
- Euro profile door cylinder (1x)
- Mechanical Access Keys (2x)

### Box 1

- Included in the box:
- CR2 3V battery (1x)
  - Allen key (1x)
  - Cylinder screw (1x)

### Box 2

- Included in the box:
- Extra Grip External Knob (1x)
  - Extra Grip Internal Knob (1x)



## 3 Removing the Old Cylinder

- 1. Locate the Mortise Plate:** Identify this plate on the door's edge where the door meets the frame.
- 2. Unscrew the Cylinder:** Locate the screw on the mortise plate that secures the cylinder. Use a suitable screwdriver to carefully unscrew it and store the screw safely for later use.



## 4 Extracting the Cylinder

- 1. Insert the Key:** Fully insert the original key into the cylinder.
- 2. Align the Cam:** Rotate the key to align the cam with the body of the cylinder, ensuring it can be removed.
- 3. Remove the Cylinder:** With the cam properly aligned, gently pull the cylinder out from its housing.

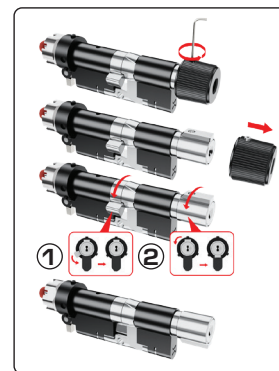
**Note:** If you encounter resistance, recheck the cam alignment.



## 5 Preparing for New Cylinder Installation

- 1. Disassemble the Knob:** Use the provided Allen key to loosen and remove the screw securing the knob. Carefully detach the knob from its base.
- 2. Prepare the Cylinder:** Ensure the new cylinder body is properly aligned with Cam 1 and Knob Housing 2. Rotate the cylinder as shown in the diagram to achieve the correct orientation for seamless integration into the lock mechanism.

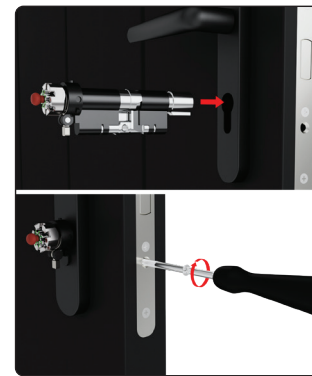
**Note:** Incorrect alignment may prevent proper integration into the lock mechanism.



## 6 Installing the New Cylinder

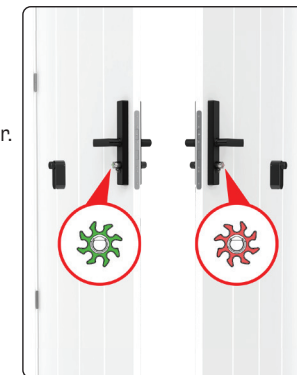
- 1. Position the New Cylinder:** Insert the new cylinder into its designated position in the door, ensuring proper alignment.
- 2. Secure the Cylinder:** Use the provided M5 steel screw or the existing cylinder screw. Hand-tighten it first, then use a Phillips-head screwdriver for final tightening.

**Note:** Do not over-tighten to avoid damage.

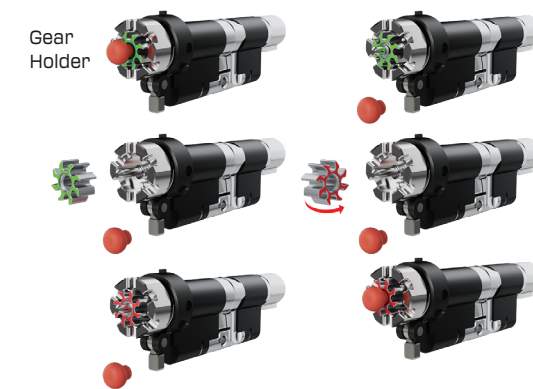


## 7 Identifying Gear Positioning

- 1. Gear Positioning**  
The smart lock is installed on the inner side of the door.
  - If installed on the right side, the gear should face green.
  - If installed on the left side, the gear should face red.
- 2. Flipping the Gear (if needed)**
  - Remove the gear holder.
  - Flip the gear if necessary to match the correct indicator position.
  - Reattach the gear holder securely until final removal in Stage 10.



The gear holder is a temporary support to prevent the gear from falling during installation. It will be removed in Stage 10 of the manual.



## 8 Installing the CR2 Battery

- Use a flathead screwdriver to open the dual-function battery compartment cover. Turn it half a turn, then press down on the latch to release the compartment.
- Insert the battery release tab into the lock, then place the CR2 battery into the BLACK X device, ensuring the positive (+) and negative (-) ends align with the symbols on the battery pull tab. A beep will confirm the device is operational.
- Return the battery compartment cover to its original position with the tab facing outward from the lock. Use the flathead screwdriver to turn the screw back to its locked position.

**Note:** Ensure that the pull tab is fully inserted into the battery compartment.



## 9 Pairing with the BLACK X App

Ensure your phone's Bluetooth and Wi-Fi are enabled before attempting to pair.

- Open the BLACK X App.
- Click on 'install a new lock'.
- Name Your Lock or choose a description.
- Create a 'Home' to associate with your lock.
- Choose the 'Home' for your lock.
- While in "Discovering Nearby Locks" mode, use the Allen key to press the connect button on the BLACK X device.
- When a pop-up for the correct lock appears, click "Connect" to proceed.
- Congratulations! You've successfully connected your first lock.



## 10 Attaching the BLACK X Device

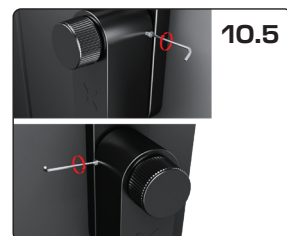
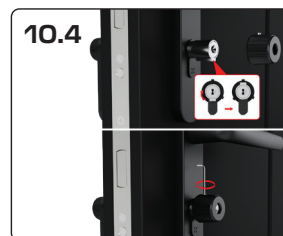
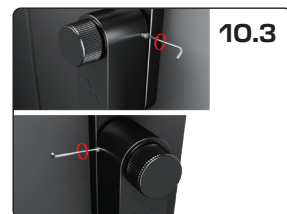
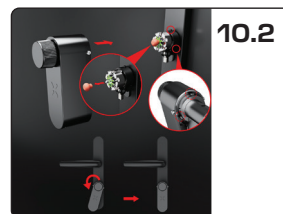
- 1. Prepare for mounting:** Before mounting the device, use the supplied Allen key to partially loosen the screws on both the left and right sides of the BLACK X device until they are no longer visible from the inside. This ensures proper positioning for installation.
- 2. Mounting the Device:** Remove the gear holder, as it is no longer needed, and dispose of it. Carefully align and insert the BLACK X device onto the cylinder, twisting it until it securely locks in place. You should hear a 'click' when the device is properly positioned. Ensure there is no looseness or movement between the device and the cylinder.
- 3. Secure the Device:** Use the supplied Allen key to partially tighten the screws on the left and right sides of the BLACK X device, ensuring it is loosely attached but still adjustable.  
**Note:** Avoid overtightening at this stage to allow proper alignment of all components.

**4. Mount the external knob:** Align the knob with the hole facing upward, then rotate the knob body until it aligns properly. Use the provided Allen key to tighten the screw on the top.

**Note:** Ensure the knob is fully aligned with the hole; if not, the Allen key may turn without securing it properly.

**5. Fully secure the device:** Once the knob is correctly mounted, return to the screws on the left and right sides of the BLACK X device and firmly tighten them using the Allen key.

**Note:** Exercise caution to avoid overtightening, as this may cause the opening mechanism to become jammed.



## 11 Operational Testing and Wi-Fi Bridge Setup (if purchased)

- 1. Functionality Test:** With the door open, test the new cylinder to confirm it operates correctly.
- 2. Wi-Fi Bridge Installation:** Optionally, install the USB-C Wi-Fi bridge to enable remote access features.



By following these steps carefully, you will ensure a secure and functional installation of your new cylinder and accompanying hardware.

## 12 Online Instructions

Scan the QR code or visit [www.black.inc/support](http://www.black.inc/support) for installation guides, troubleshooting tips, and contact details.

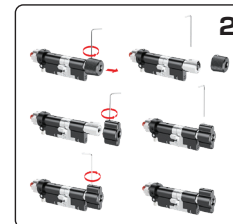
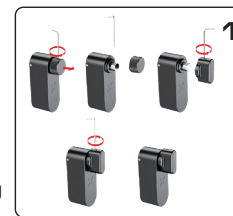


[www.black.inc](http://www.black.inc)

## Optional - Knob Replacement

For your convenience, an extra grip knob is included. If you prefer a different grip style, follow these steps:

- 1. Inner knob (without a keyhole):**
  - Use the provided Allen key to loosen and remove the existing knob.
  - Install the new knob without a keyhole and tighten it securely.
- 2. Outer knob (with one keyhole):**
  - Use the Allen key to loosen and remove the existing knob.
  - Install the new knob with one keyhole and tighten it securely.



## FCC Statement

This device complies with part 15 of the FCC Rules. Operation is subject to the following two conditions: (1) This device may not cause harmful interference, and (2) this device must accept any interference received, including interference that may cause undesired operation.

**Note:** This equipment has been tested and found to comply with the limits for a Class B digital device, pursuant to part 15 of the FCC Rules. These limits are designed to provide reasonable protection against harmful interference in a residential installation. This equipment generates, uses and can radiate radio frequency energy and, if not installed and used in accordance with the instructions, may cause harmful interference to radio communications.

However, there is no guarantee that interference will not occur in a particular installation. If this equipment does cause harmful interference to radio or television reception, which can be determined by turning the equipment off and on, the user is encouraged to try to correct the interference by one or more of the following measures:

- Reorient or relocate the receiving antenna.
- Increase the separation between the equipment and receiver.
- Connect the equipment into an outlet on a circuit different from that to which the receiver is connected.
- Consult the dealer or an experienced radio/TV technician for help.

**Note:** The Grantee is not responsible for any changes or modifications not expressly approved by the party responsible for compliance, such modifications could void the user's authority to operate the equipment. The device has been evaluated to meet general RF exposure requirement. To maintain compliance with FCC's RF exposure guidelines, the distance must be at least 20 cm between the radiator and your body, and fully supported by the operating and installation configurations of the transmitter and its antenna(s).

