

## 1 Download the app



## 2 Unbox and Prepare Components

Before installation, open the package and identify all components. Lay them out for easy access.

### Hardware components:

- BLACK X Euro Profile Smart Lock (1x)
- Euro profile door cylinder (1x)
- M5x70mm Cylinder Screw (1x)
- Mechanical Access Keys (2x)

### Box 1

- Included in the box:
- CR2 3V battery (1x)
- Allen key (1x)
- M5x60mm Cylinder Screw (1x)
- Cylinder extensions (4x)

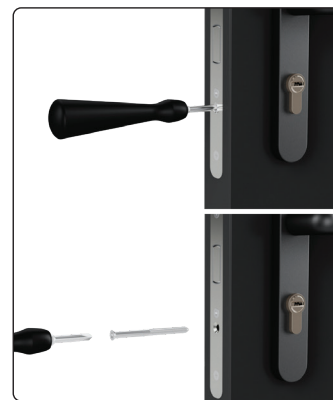
### Box 2

- Included in the box:
- Extra Grip External Knob (1x)
- Extra Grip Internal Knob (1x)
- Spare Cylinder Screws (4x)
- Self adhesive correction parts  $\varnothing 10 \times 1,5 \text{mm}$



## 3 Removing the Old Cylinder

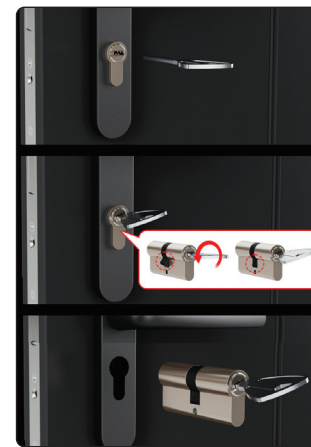
- 1. Locate the Mortise Plate:** Identify this plate on the door's edge where the door meets the frame.
- 2. Unscrew the Cylinder:** Locate the screw on the mortise plate that secures the cylinder. Use a suitable screwdriver to carefully unscrew it and store the screw safely for later use.



## 4 Extracting the Cylinder

- 1. Insert the Key:** Fully insert the original key into the cylinder.
- 2. Align the Cam:** Rotate the key to align the cam with the body of the cylinder, ensuring it can be removed.
- 3. Remove the Cylinder:** With the cam properly aligned, gently pull the cylinder out from its housing.

**Note:** If you encounter resistance, recheck the cam alignment.



## 5 Adjusting Cylinder Pull-Protection (if applicable)

If your door fitting is already equipped with a cylinder pull-protection on the outside, it must first be adjusted before installing the BLACK X cylinder.

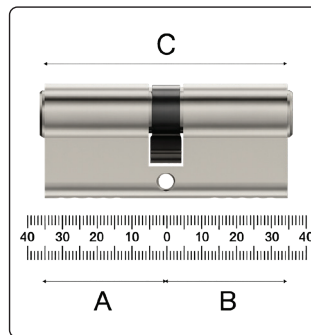
1. Remove the fitting from the door.
2. Take out the small round slotted plate from the pull-protection housing.
3. Place the housing back into the fitting and then reattach it to the door.
4. The resulting opening of approximately  $\varnothing 17 \text{mm}$  now provides space for the BLACK X cylinder.

**Note:** This step is only necessary if your door is fitted with a pull-protection plate or a rose.

## 6 Measuring the Previous Cylinder

The modular cylinder can be extended by up to 20 mm in total, allowing a maximum of  $2 \times 5 \text{ mm}$  (10 mm) per side.

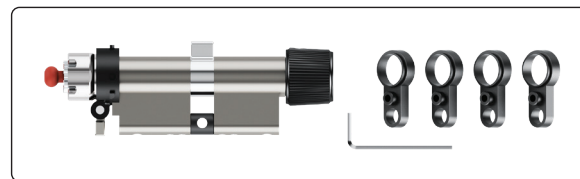
1. Before installation: Use a measuring tool to determine the exact cylinder length required. Refer to the diagram and measure:
  - A** - From the inside edge to the center (screw hole)
  - B** - From the outside edge to the center (screw hole)
  - C** - Total length (end to end)
2. Based on your measurement, decide how many extensions are needed on each side for the next step.



## 7 Prepare Components

Gather all parts and tools required for the assembly. Ensure you have the following:

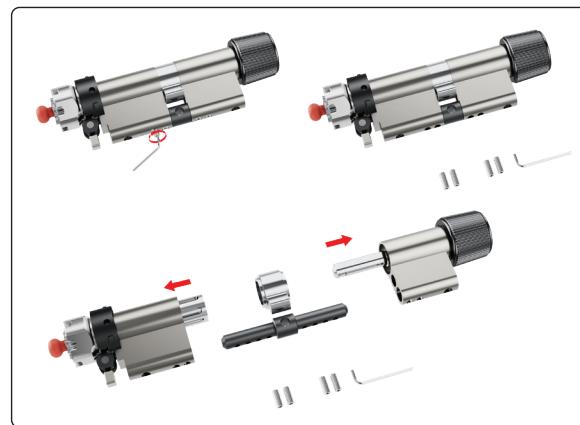
- Cylinder main body
- **35mm / 45mm / 55mm base**
- Cylinder extensions
- Allen key



## 8 Detach the Cylinder Section

1. Use the Allen key to loosen the screws on the relevant cylinder body.
2. Carefully detach the cylinder section as shown in the diagrams.

**Note:** Keep the screws in a safe place for reassembly.



## 9 Adjusting the Modular Cylinder

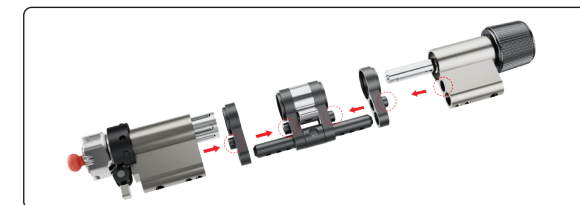
Your cylinder can be extended with 5 mm extensions.

- Add extensions to one or both sides.
- Maximum:  $2 \times 5 \text{ mm}$  (10 mm) per side.
- Extensions can be uneven (e.g. 5 mm one side, 10 mm the other).

**Examples:**

- 35/35 base  $\rightarrow$  up to 45/45 (90 mm total)
- 45/45 base  $\rightarrow$  up to 55/55 (110 mm total)
- 55/55 base  $\rightarrow$  up to 65/65 (130 mm total)

See the diagram below before starting. It shows the final assembly layout and how the cylinder extensions integrate with the full cylinder.

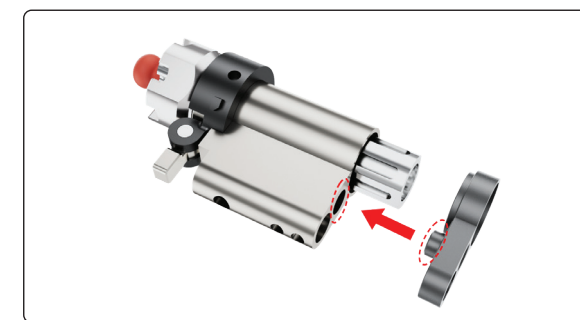


## 10 Assembly the Extended Cylinder

### 1. Cylinder body

Place the cylinder extension(s) on the cylinder body if needed or skip to Step 2.

**Note:** Ensure the protruding side of each plate faces the cylinder body.

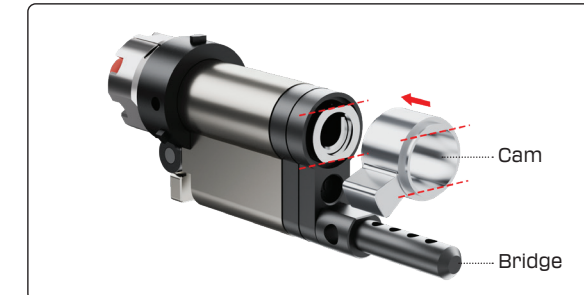


## 10 Assembly the Extended Cylinder (continue)

### 2. Placing the bridge and cam

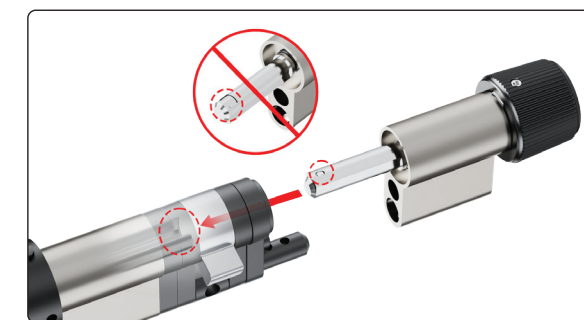
Attach the bridge and cam to the cylinder body. Make sure the cam is correctly positioned and aligned, as shown by the arrows in the diagram.

**Note:** If this side doesn't require an extension, place it in its standard position.



### 3. Final Assembly:

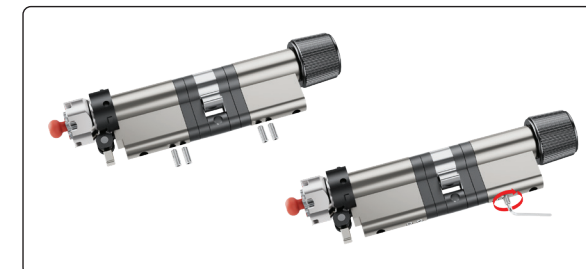
Add the required cylinder extension(s), or omit if this side doesn't require one. Insert the opposite side of the cylinder into the extension(s) and rotate the knob as shown in the diagram until all internal components align correctly, allowing both sides of the cylinder to connect smoothly and securely.



## 11 Secure the Assembly

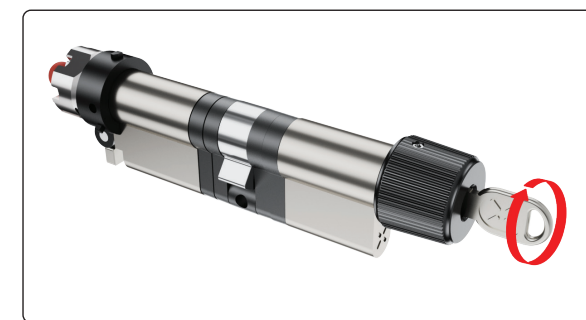
Use the preinstalled screws provided to secure the key modules onto the cylinder body. If a screw is lost, there are four extra screws included.

1. When inserting the screw for the first time, be very careful to ensure it is properly aligned with the thread.
2. Tighten the screws securely, but avoid over-tightening to prevent damage to the cylinder.



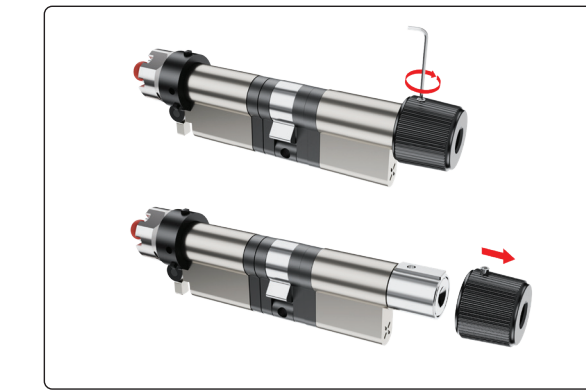
## 12 Test the Cylinder

1. Insert the key into the external side of the cylinder to check for smooth operation.
2. Verify that the key rotates freely and that there is no obstruction or stiffness.



## 13 Detach the Knob

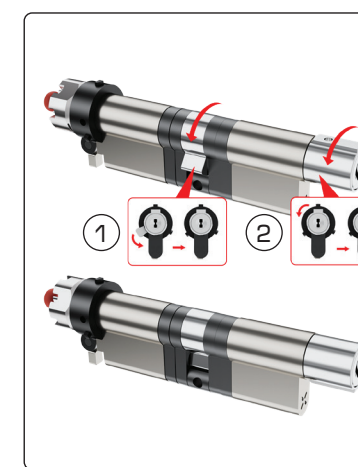
Use the provided Allen key to loosen and remove the screw securing the knob. Carefully detach the knob from its base.



## 14 Preparing for New Cylinder Installation

Ensure the new cylinder body is properly aligned with Cam '1' and Knob Housing '2'. Rotate the cylinder as shown in the diagram to achieve the correct orientation for seamless integration into the lock mechanism.

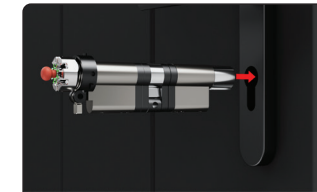
**Note:** Incorrect alignment may prevent proper integration into the lock mechanism.



## 15 Installing the New Cylinder

### 1. Position the New Cylinder:

Insert the new cylinder into its designated position in the door, ensuring proper alignment.



### 2. Secure the Cylinder:

Use the provided M5 steel screw or the existing cylinder screw. Hand-tighten it first, then use a Phillips-head screwdriver for final tightening.



#### Note:

Do not over-tighten to avoid damage.

## 16 Preparing for New Cylinder Installation

This step is optional and only required if your door is equipped with a cylinder pull-protection. Any misalignment is purely aesthetic and does not affect the function or quality of the assembly.

1. After installing the new cylinder, check the alignment of the pull-protection housing.
2. If not fully aligned, use one or both of the supplied Self adhesive correction parts  $\varnothing 10 \times 1,5 \text{ mm}$ .
3. Attach the correction part(s) to the inside of the pull-protection housing, at the height of the narrower part of the cylinder, or at the end of the narrow section of the cylinder.
4. Recheck the alignment to ensure a proper fit.

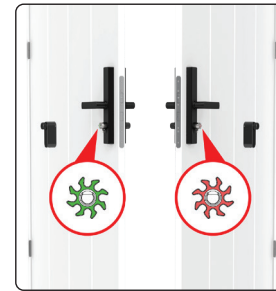


## 17 Identifying Gear Positioning

### 1. Gear Positioning

The smart lock is installed on the inner side of the door.

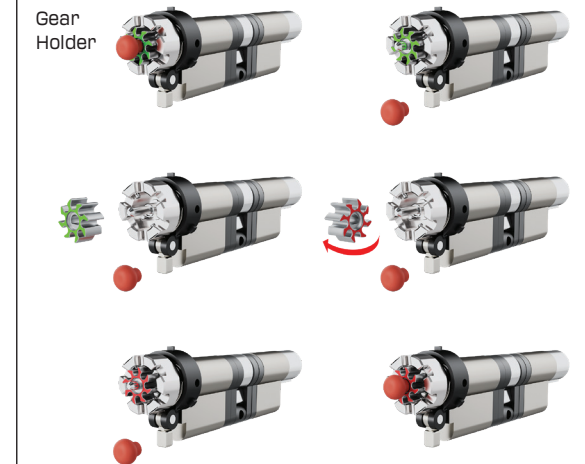
- If installed on the right side, the gear should face green.
- If installed on the left side, the gear should face red.



### 2. Flipping the Gear (if needed)

- Remove the gear holder.
- Flip the gear if necessary to match the correct indicator position.
- Reattach the gear holder securely until final removal in Stage 20.

The gear holder is a temporary support to prevent the gear from falling during installation. It will be removed in Stage 20 of the manual.



## 18 Installing the CR2 Battery

- Use a flathead screwdriver to open the dual-function battery compartment cover. Turn it half a turn, then press down on the latch to release the compartment.
- Insert the battery release tab into the lock, then place the CR2 battery into the BLACK X device, ensuring the positive (+) and negative (-) ends align with the symbols on the battery pull tab. A beep will confirm the device is operational.
- Return the battery compartment cover to its original position with the tab facing outward from the lock. Use the flathead screwdriver to turn the screw back to its locked position.

**Note:** Ensure that the pull tab is fully inserted into the battery compartment.



## 19 Pairing with the BLACK X App

Ensure your phone's Bluetooth and Wi-Fi are enabled before attempting to pair.

- Open the BLACK X App.
- Click on 'Install a new lock'.
- Name Your Lock or choose a description.
- Create a 'Home' to associate with your lock.
- Choose the 'Home' for your lock.
- While in "Discovering Nearby Locks" mode, use the Allen key to press the connect button on the BLACK X device.
- When a pop-up for the correct lock appears, click "Connect" to proceed.
- Congratulations! You've successfully connected your first lock.



## 20 Attaching the BLACK X Device

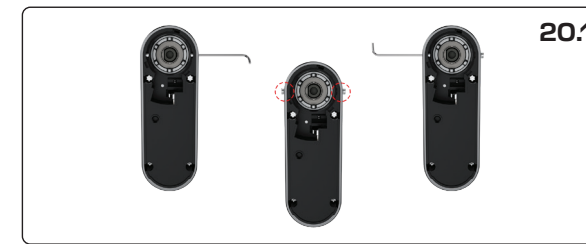
1. **Prepare for mounting:** Before mounting the device, use the supplied Allen key to partially loosen the screws on both the left and right sides of the BLACK X device until they are no longer visible from the inside. This ensures proper positioning for installation.

2. **Mounting the Device:** Remove the gear holder, as it is no longer needed, and dispose of it. Carefully align and insert the BLACK X device onto the cylinder, twisting it until it securely locks in place. You should hear a 'click' when the device is properly positioned. Ensure there is no looseness or movement between the device and the cylinder.

### 3. Secure the Device:

Use the supplied Allen key to partially tighten the screws on the left and right sides of the BLACK X device, ensuring it is loosely attached but still adjustable.

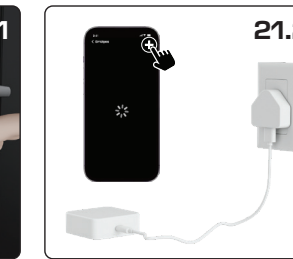
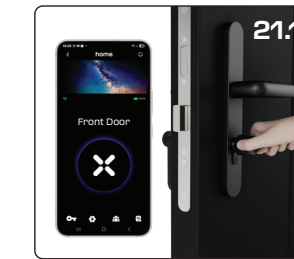
**Note:** Avoid overtightening at this stage to allow proper alignment of all components.



4. **Mount the external knob:** Align the knob with the hole facing upward, then rotate the knob body until it aligns properly. Use the provided Allen key to tighten the screw on the top. **Note:** When installing the knob, ensure the Allen (grub) screw is tightened into one of the two holes on the cylinder. Depending on the door fitting, the first hole may not align; if so, use the second hole. The screw must be fixed into a hole to secure the knob and prevent it from sliding loose.
5. **Fully secure the device:** Once the knob is correctly mounted, return to the screws on the left and right sides of the BLACK X device and firmly tighten them using the Allen key. **Note:** Exercise caution to avoid overtightening, as this may cause the opening mechanism to become jammed.

## 21 Operational Testing and Wi-Fi Bridge Setup (if purchased)

1. **Functionality Test:** With the door open, test the new cylinder to confirm it operates correctly.
2. **Wi-Fi Bridge Installation:** Optionally, install the USB-C Wi-Fi bridge to enable remote access features.



By following these steps carefully, you will ensure a secure and functional installation of your new cylinder and accompanying hardware.

## 22 Online Instructions

Need help with installation or have questions?



[www.black.inc](http://www.black.inc)

## Optional - Knob Replacement

For your convenience, an extra set of two grip knobs is included. If you prefer a different grip style, follow these steps:

### 1. Inner knob (without a keyhole):

- Use the provided Allen key to loosen and remove the existing knob.
- Install the new knob without a keyhole and tighten it securely.

### 2. Outer knob (with one keyhole):

- Use the Allen key to loosen and remove the existing knob.
- Install the new knob with one keyhole and tighten it securely.

