



BLACKSTAR
DIVERSIFIED ENTERPRISES, LLC



SBA HUBZONE CERTIFIED (SMALL BUSINESS)

SBE / MBE CERTIFIED

Louisiana, Mississippi, Texas, Maryland,
Virginia, Florida, New York, New Jersey,
California, Tennessee, Illinois

NAICS CODES

423610 - Electrical Equipment Wholesaler
423390 - Construction Material Wholesaler
423990- Signs Merchant Wholesalers
335311 - Manufacturing Specialty
Transformers
811310 - Commercial and Industrial
Machinery Repair and Maintenance



BLACKSTAR DIVERSIFIED ENTERPRISES, LLC (BDE)

ABOUT BDE

BDE is a leading system integrator
in providing custom electrical
distribution and control systems for
public and private customers

COMPANY INFORMATION

Hugh Blackwell, Principal Officer
Email: sales@blackstardiversified.net
Phone Number: 504-265-9919
Warehousing & Integration Center:
10836 Chef Menteur Highway, New
Orleans, LA 70127

BDE ADVANTAGE

As a Black-owned and operated firm ,
Blackstar Diversified Enterprises (BDE)
leverages over 50 years of combined
engineering experience to deliver elite
systems integration for the public and
private sectors. Our 14,000 sq. ft. Center
of Excellence in New Orleans serves as a
premier operations, warehouse, and
integration hub , supporting a robust
regional reach with active jobsites across
MD, DC, VA, GA, LA, TX, MS, and AR.

*"Powering the future of
Construction™"*

POWER DISTRIBUTION & UTILITY SOLUTIONS

Custom integration and supply of power distribution equipment for high-stakes utility and commercial applications.

Sub-Sectors: Public and Private Utilities, Federal Agencies, and Large-Scale Industrial.

Key Equipment & Services:

- Transformers: Medium/Large Power (up to 650MVA/750kV), Liquid Filled Padmounted, and UL Listed Cast Coil.
- Switchgear: ANSI Medium Voltage Metal Clad, UL 1558, and UL 891 Switchboards.
- Specialized Systems: Substation/Switchyard Packages, SCADA Control Upgrades, and custom Paralleling Control Cabinets.

Major Utility Partners: PSE&G, Exelon (PEPCO & BGE), Dominion Energy, and Seattle City Light.

Notable Projects: PEPCO Graysonville and Harvard Substations; SWBNO Drainage Pumping Station 5.

CURRENT CUSTOMERS



LIGHT ASSEMBLY & MANUFACTURING

We assemble the following at our New Orleans Facility:

- UL508 Control Panels
- Custom Transformer Skid Assemblies
- Modified UL Switchgear and Switchboards
- Modified Motor Control Assemblies
- Traffic Control Assemblies
- Variable Message Boards

EQUIPMENT VENDORS



DATA CENTER INFRASTRUCTURE

Specialized systems integration and equipment supply for mission-critical data center applications.

Sector Experience: \$225+ million in custom equipment sales since 2018.

Next-Gen Data Center Solutions:

- Two-Phase Liquid Cooling: Direct-to-chip cooling solutions (Accelsius™).
- Power Distribution Units (PDU): Custom integrated units for high-density environments.
- Quickship Capabilities: Ability to meet rapid-deployment timelines for hyperscale providers.

Existing Installations:

Amazon Web Services (AWS), Microsoft, Meta, Apple, Google, and Iron Mountain.

CURRENT CUSTOMERS



LIGHT ASSEMBLY & MANUFACTURING

We assemble the following at our New Orleans Facility:

- Custom Transformer Skid Assemblies
- Modified UL Switchgear and Switchboards
- Modified Motor Control Assemblies
- Relay Control Panels

EQUIPMENT VENDORS



EXISTING INSTALLATIONS

- Amazon Web Services
- Microsoft
- Dupont Fabros Technologies
- Cloud HQ
- Vantage Data Centers
- Apple
- Meta
- Alphabet
- Raging Wire
- Terramark
- Iron Mountain
- QTS
- Viawest



EQUIPMENT & SERVICES

Two Phase Liquid Direct to Chip Cooling
IEEE C57.12.00 Liquid Filled Unit
Substation and Padmounted
Transformers
IEEE C37.20.2 MV Metal Clad
Switchgear
UL1562 Medium Voltage Cast Coil
PDU



UL1558 Low Voltage Metal Clad
Switchgear
UL891 Switchboards
UL508 Control Panels
UL845 Motor Control Centers
Field Modification of Metering and
Relays

TRAFFIC CONTROL & DRIVER AWARENESS

Automation and custom fabrication of intelligent traffic control systems for municipal and state agencies.

Key Products:

- Controllers & Cabinets: ATC, ITS, NEMA, and custom 170/2070 Cabinets.
- Detection Systems: Video and radar detection utilizing MOS Dashboards.
- Pedestrian Safety: HAWK signals, Push Button solutions, and Wrong-Way alerting systems.
- Portable Solutions: Portable traffic signals, message signs, and arrow boards.

Major Partners:

Louisiana DOTD, City of New Orleans, Jefferson Parish, and Kenner.

Featured Project:

City of New Orleans Traffic Control Cabinets Contract.

CURRENT CUSTOMERS



EQUIPMENT VENDORS



PRODUCTS



TRANSIT & INFRASTRUCTURE

Leading provider of custom electrical distribution and control systems for public transit and rail networks.

Sector Experience: \$70+ million in custom equipment sales to the transit sector since 2002.

Transit-Specific Solutions:

- Traction Power: Custom retrofits and supply of new power distribution equipment.
- Platform & Facility Rehab: Equipment for station expansions and platform rehabilitations.

Key Transit Customers: WMATA (DC Metro), MTA (Maryland), New Orleans RTA, and Amtrak.

Featured Projects: Dulles Silver Line Expansion (Phases 1 & 2), WMATA Blue Line Power System Upgrades, and Amtrak Washington Terminal Yard Track Expansion.

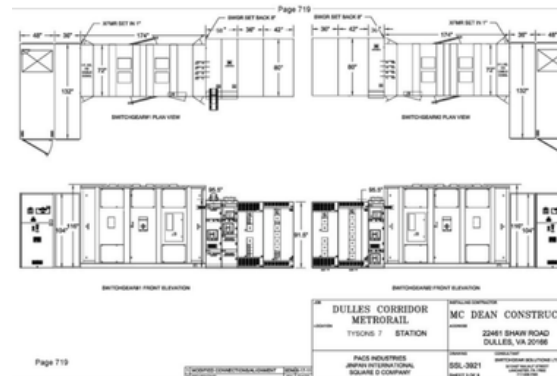
CURRENT CUSTOMERS



SYSTEM INTEGRATION



PRODUCTS



RENEWABLES & ENERGY EFFICIENCY

Engineering and supply of equipment for solar duty, energy storage, and microgrid applications.

Sub-Sector Applications:

- Microgrids: Bringing self-sufficient power to remote or underserved areas.
- Solar Integration: Liquid Filled Solar Duty Padmounted Transformers.
- Storage Solutions: Shifting power to align with peak demand and providing clean backup power.

Featured Projects:

Community Solar at Oxon Run (Washington, DC) and Resilience Hub – Washington, DC.

CURRENT CUSTOMERS



Maycroft Apartments:
A Low-Income Solar+Storage
Resiliency Center in DC

EQUIPMENT VENDORS



PRODUCTS

