

In the event of a static lock-down

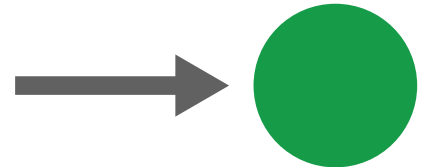
1. All Bayside Kids doors must be closed AND locked



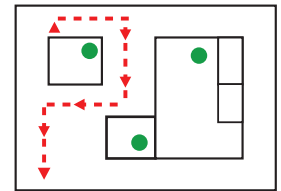
2. Children moved to the designated Safe Zone in that space.



Safe Zones are identified in all Bayside Kids environments with a Green Circle decal.



Safe Zones are also identified on all Bayside Kids Evacuation Maps with a Green Circle.



IPHONE STATIC LOCKDOWN TRIGGER

All Bayside Staff are equipped with an app on their mobile device that will trigger a static lockdown and notify the police.

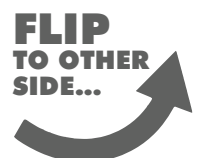


COMMUNICATION BY WALKIE TALKIE

During a lockdown procedure, all Bayside Walkie Talkies will be overridden and will be the primary point of contact. Therefore, it is important to have the walkie talkie in your classroom ON and TURNED UP at all times.



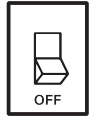
LOCKDOWN STEPS ON THE NEXT PAGE



When a lockdown is initiated, please follow the steps below.



1. Lock all the doors to the classroom or environment.



2. Turn off the classroom lights.



3. Move all children safely and quietly to the designated Safe Zone.

- *(Most of these will be in the Bathroom or Closet within the environment. All Safe Zones are labeled with a Green Circle decal.)*



4. Silence your cell phone and walkie.



5. Keep the children as quiet and still as possible.



6. Do not move from the Safe Zone until you hear the All Clear from the Police.
